

NORTHWEST O'HARE GATEWAY CENTER

3625 N. WILKE RD. | ARLINGTON HEIGHTS, IL

Colliers



PROPERTY
VIDEO

FEATURES

- Available Size: 148,143 SF (divisible to 22,000 SF)
- Office Size: 3,124 SF
- Ceiling Height: 32' clear
- Loading: 42 exterior docks
- Car Parking: 278 spaces
- Power: 2,000 amps, 277/480 volt, 3-phase
- Bay Size: 54' x 50' with 60' speed bay
- Lighting: LED
- Sprinkler System: ESFR
- Lease Rate: Subject to Offer
- Class 6B Real Estate tax incentive in place
- Close proximity to 4-way interchange at Highway 53 & Dundee Rd.
- 15 minutes to O'Hare International Airport

FOR LEASE

148,143 SF

Contact us:

TOM RODENO

Vice Chair

+1 847 698 8231

tom.rodeno@colliers.com

STEVE OSTROWSKI

Vice Chair

+1 847 444 5733

steve.ostrowski@colliers.com

BRIAN KLING

Principal & Vice Chair

+1 847 698 6223

brian.kling@colliers.com

MICHAEL LUPO

Senior Associate

+1 847 444 5708

michael.lupo@colliers.com

Colliers

6250 N. River Rd., Suite 11-100

Rosemont, IL 60018



RIDGELINE
PROPERTY GROUP



AEW

Accelerating success.

NORTHWEST O'HARE GATEWAY CENTER

3625 N. WILKE RD. | ARLINGTON HEIGHTS, IL

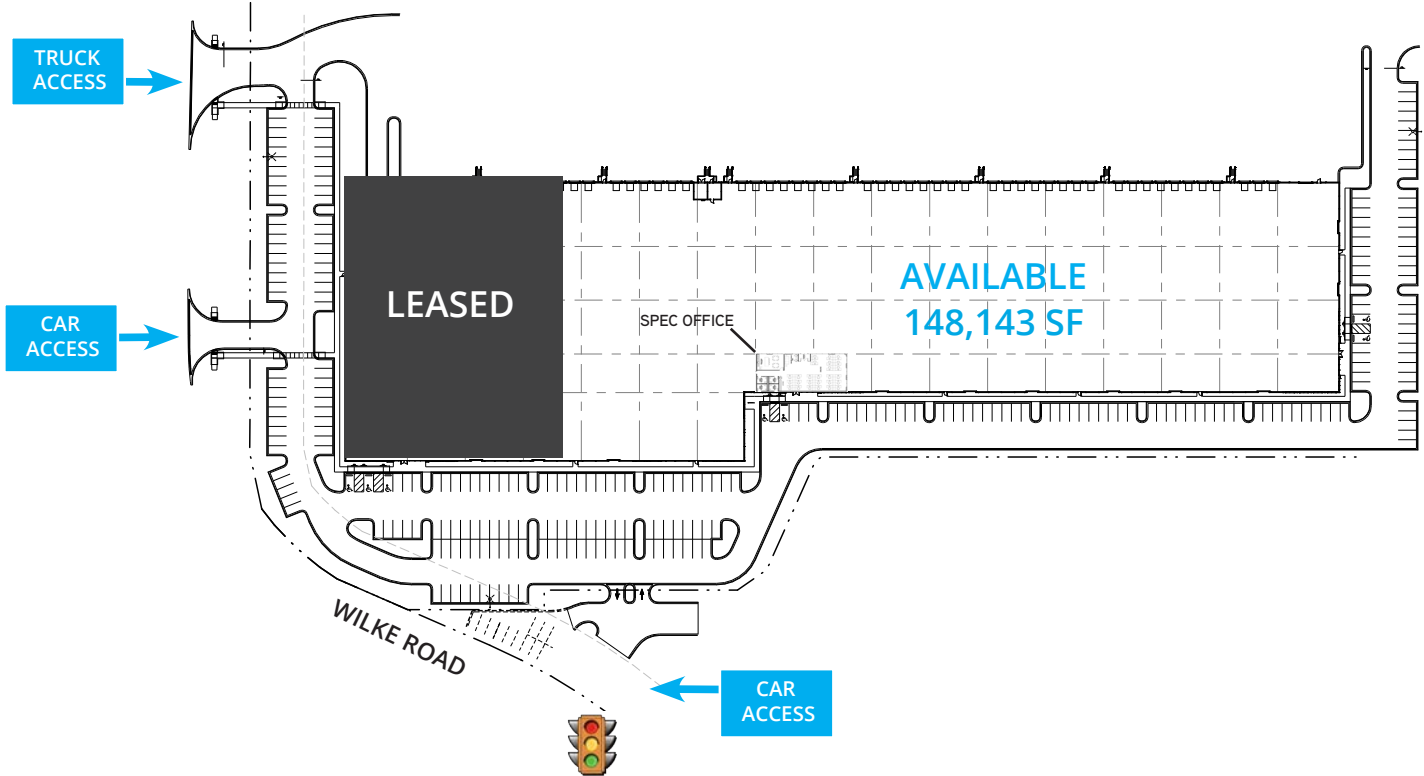


RIDGELINE
PROPERTY GROUP

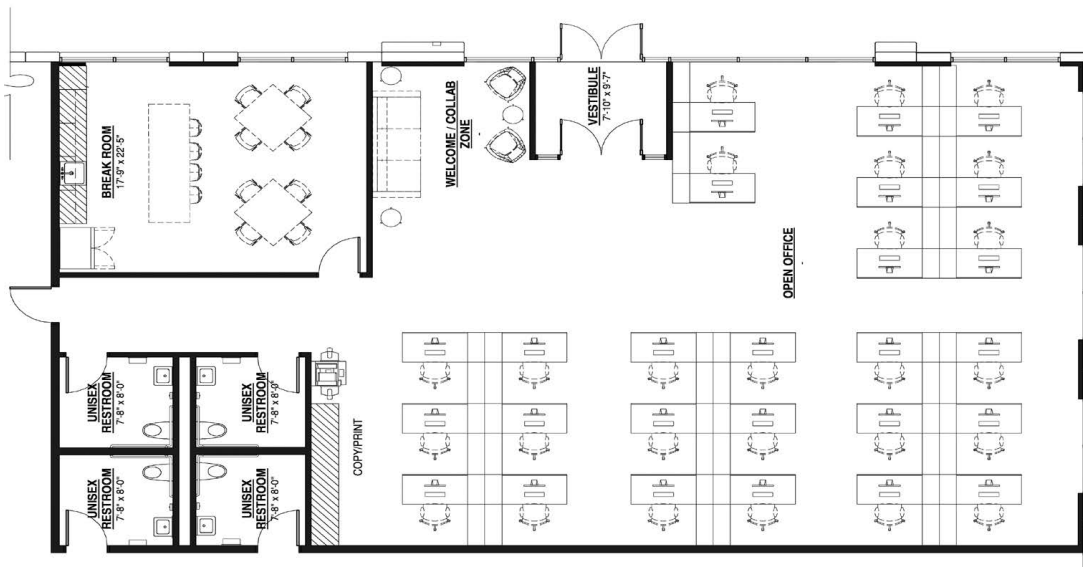


AEW

SITE PLAN



SPEC OFFICE | 3,124 SF



TOM RODENO

Vice Chair
+1 847 698 8231
tom.rodeno@colliers.com

STEVE OSTROWSKI

Vice Chair
+1 847 444 5733
steve.ostrowski@colliers.com

BRIAN KLING

Principal & Vice Chair
+1 847 698 6223
brian.kling@colliers.com

MICHAEL LUPO

Senior Associate
+1 847 444 5708
michael.lupo@colliers.com

NORTHWEST O'HARE GATEWAY CENTER

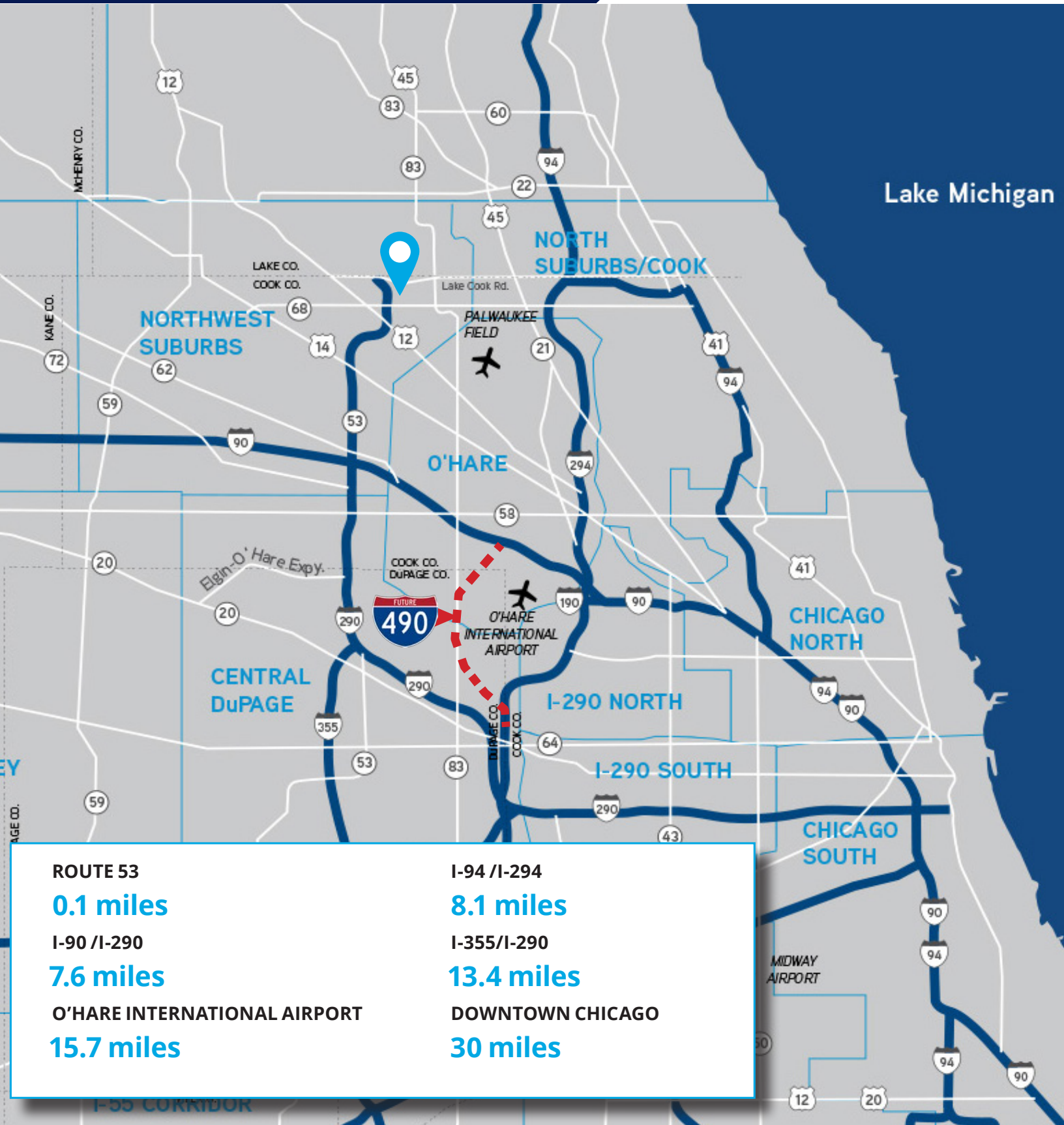
3625 N. WILKE RD. | ARLINGTON HEIGHTS, IL



RIDGELINE
PROPERTY GROUP



AEW



TOM RODENO

Vice Chair
+1 847 698 8231
tom.rodeno@colliers.com

STEVE OSTROWSKI

Vice Chair
+1 847 444 5733
steve.ostrowski@colliers.com

BRIAN KLING

Principal & Vice Chair
+1 847 698 6223
brian.kling@colliers.com

MICHAEL LUPO

Senior Associate
+1 847 444 5708
michael.lupo@colliers.com

NORTHWEST O'HARE GATEWAY CENTER

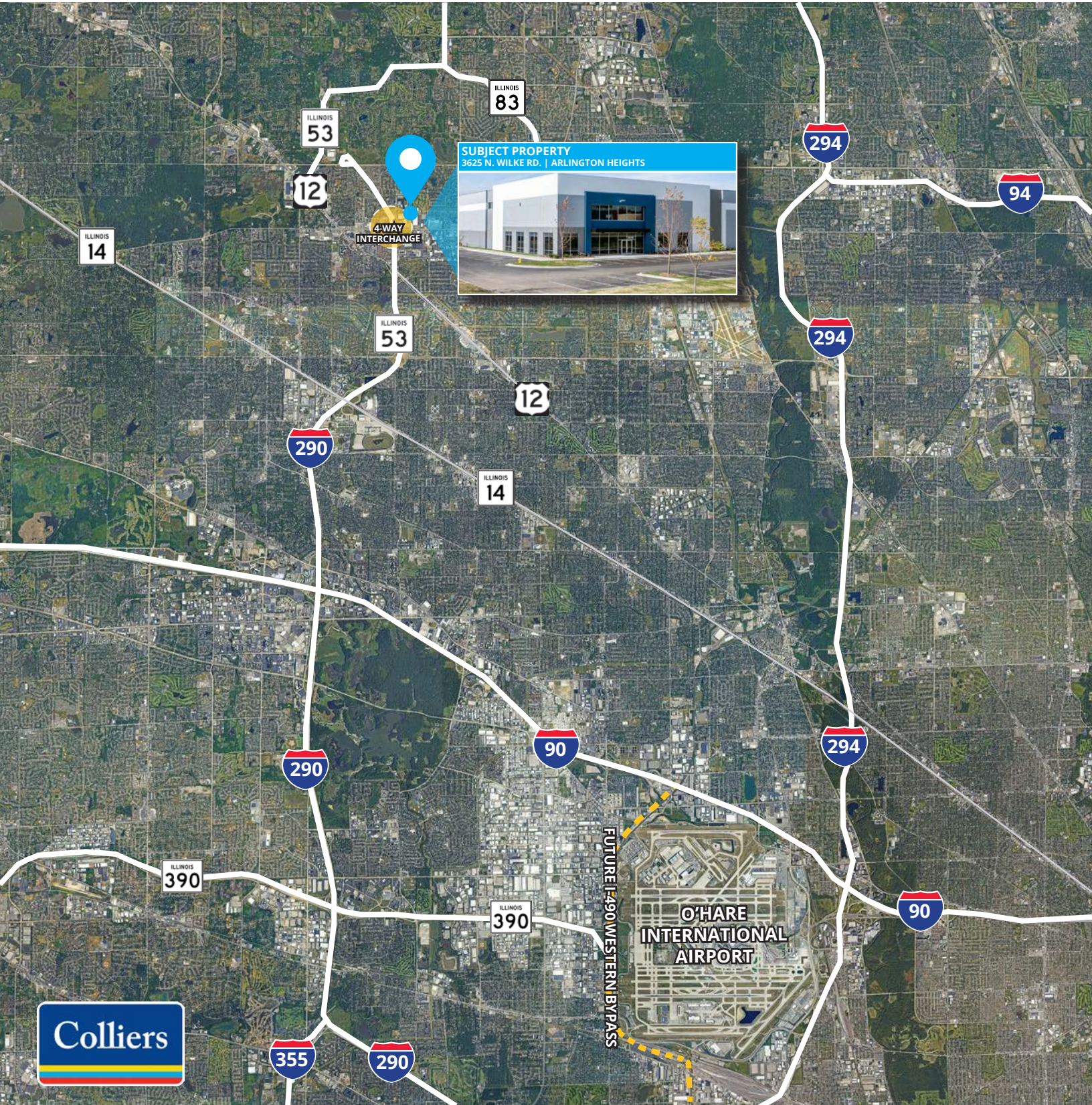
3625 N. WILKE RD. | ARLINGTON HEIGHTS, IL



RIDGELINE
PROPERTY GROUP



AEW



TOM RODENO

Vice Chair
+1 847 698 8231
tom.rodeno@colliers.com

STEVE OSTROWSKI

Vice Chair
+1 847 444 5733
steve.ostrowski@colliers.com

BRIAN KLING

Principal & Vice Chair
+1 847 698 6223
brian.kling@colliers.com

MICHAEL LUPO

Senior Associate
+1 847 444 5708
michael.lupo@colliers.com

NORTHWEST O'HARE GATEWAY CENTER

3625 N. WILKE RD. | ARLINGTON HEIGHTS, IL



RIDGELINE
PROPERTY GROUP



AEW

AREA AMENITIES



TOM RODENO

Vice Chair
+1 847 698 8231
tom.rodeno@colliers.com

STEVE OSTROWSKI

Vice Chair
+1 847 444 5733
steve.ostrowski@colliers.com

BRIAN KLING

Principal & Vice Chair
+1 847 698 6223
brian.kling@colliers.com

MICHAEL LUPO

Senior Associate
+1 847 444 5708
michael.lupo@colliers.com

NORTHWEST O'HARE GATEWAY CENTER

3625 N. WILKE RD. | ARLINGTON HEIGHTS, IL

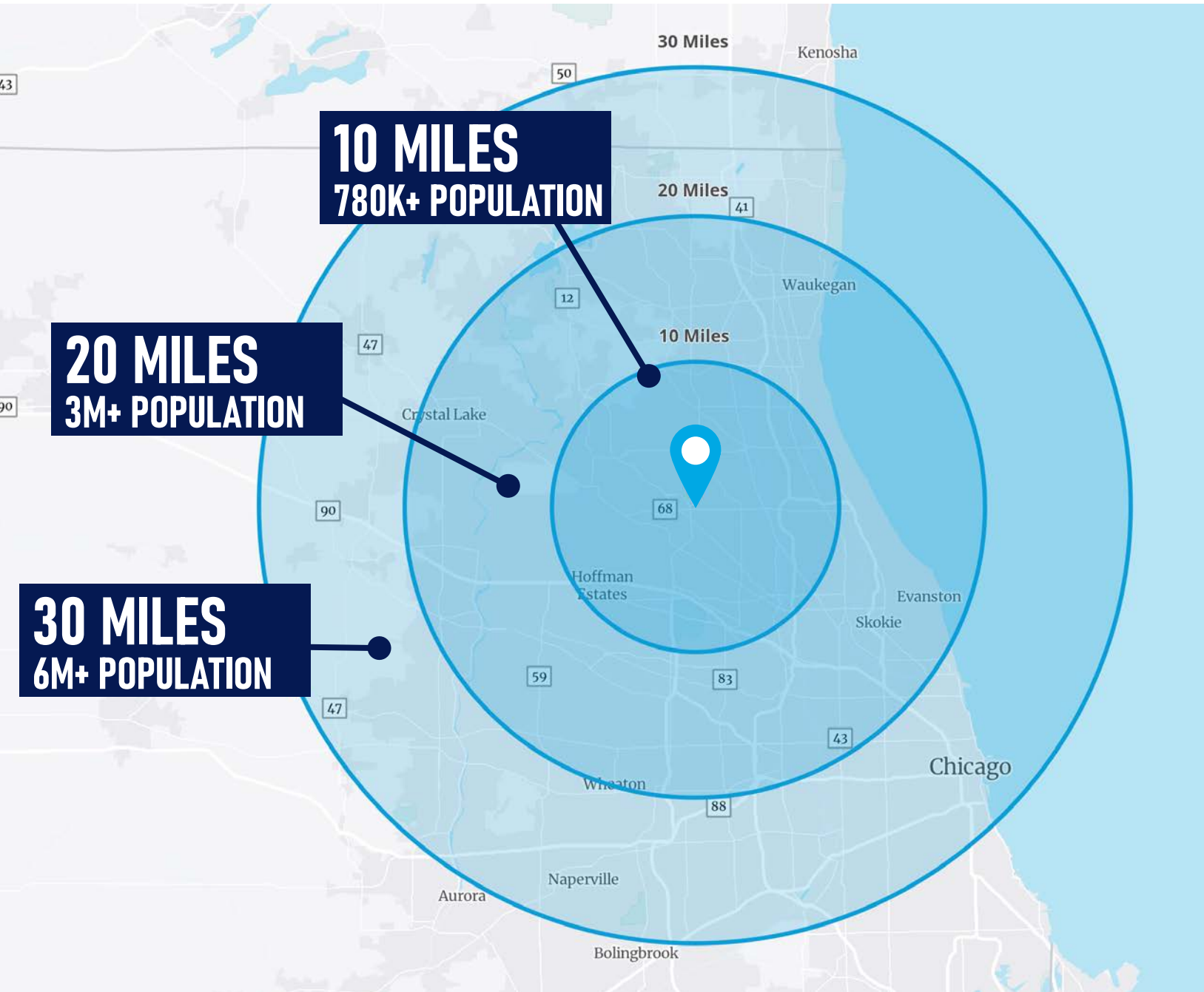


RIDGELINE
PROPERTY GROUP



AEW

POPULATION



TOM RODENO

Vice Chair
+1 847 698 8231
tom.rodano@colliers.com

STEVE OSTROWSKI

Vice Chair
+1 847 444 5733
steve.ostrowski@colliers.com

BRIAN KLING

Principal & Vice Chair
+1 847 698 6223
brian.kling@colliers.com

MICHAEL LUPO

Senior Associate
+1 847 444 5708
michael.lupo@colliers.com