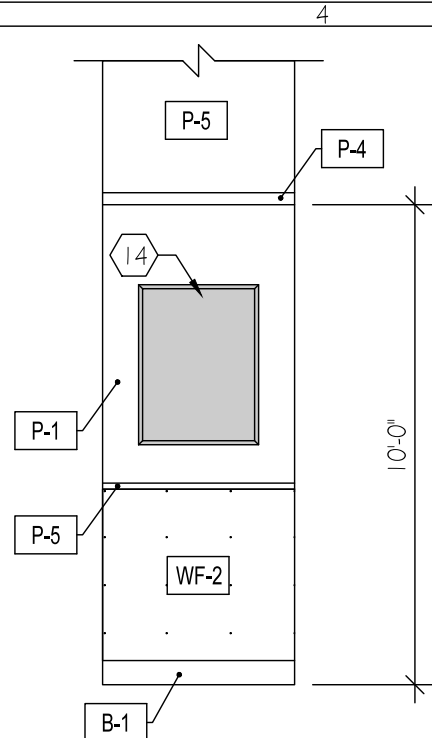
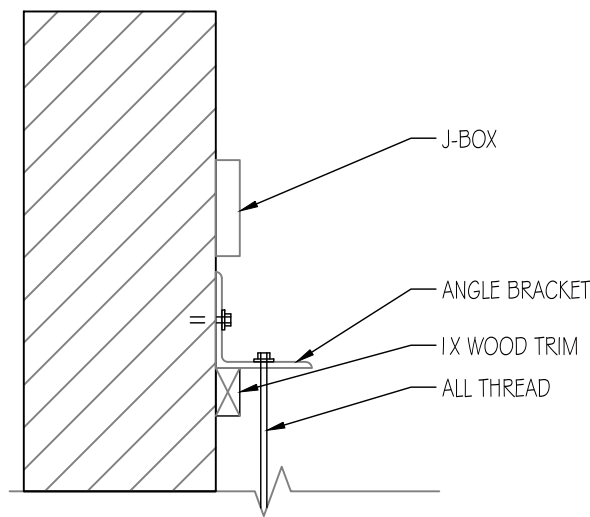
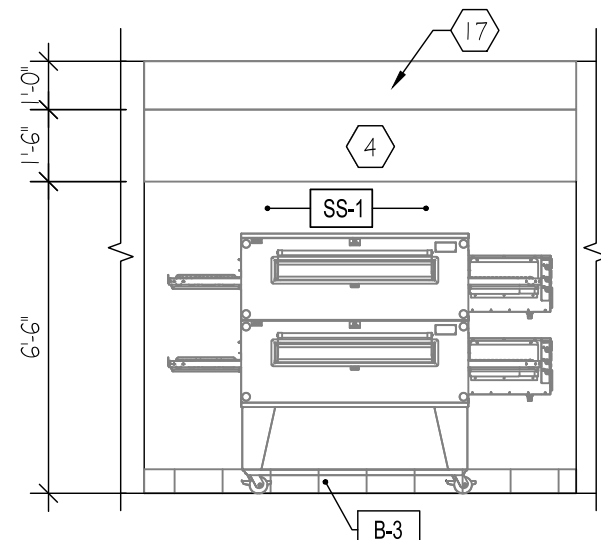
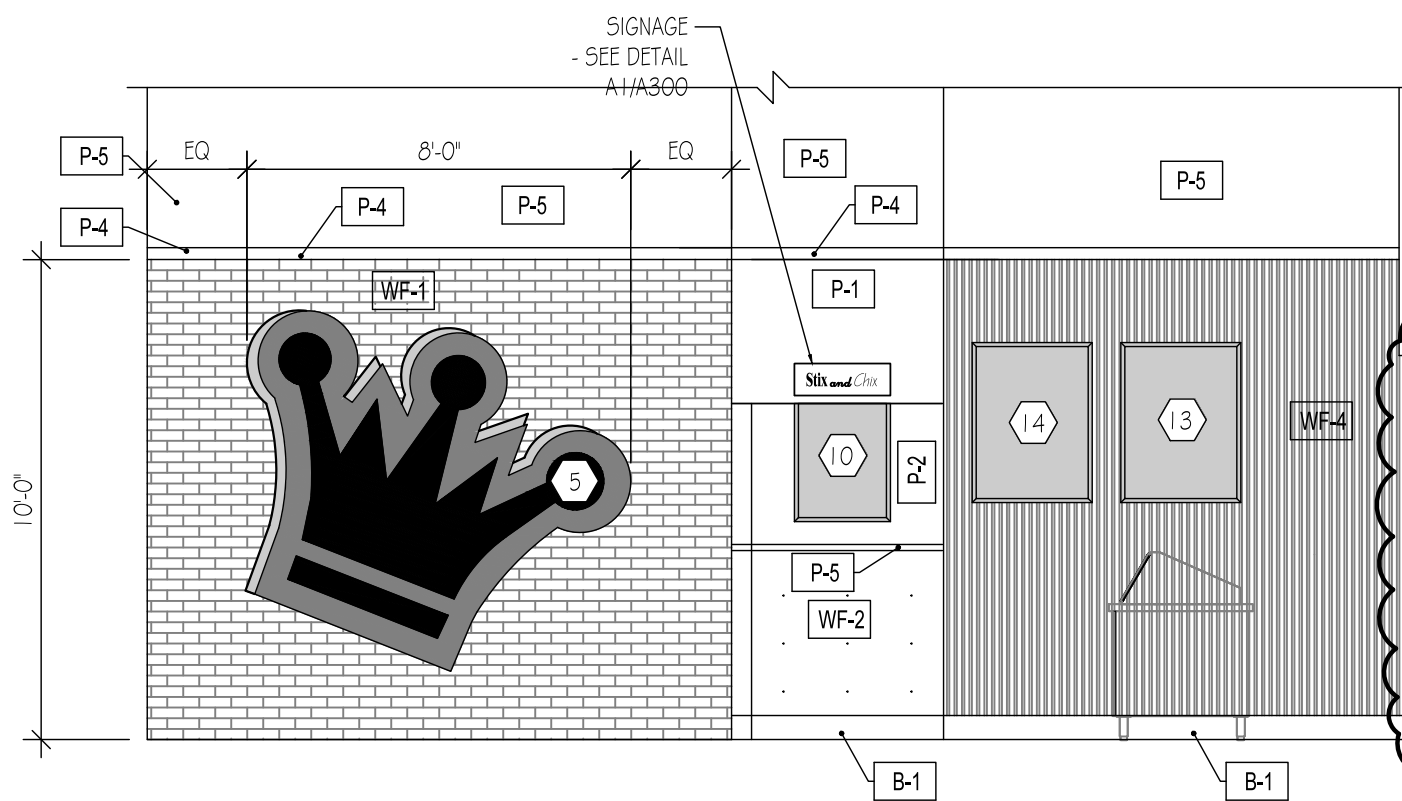


NOTE: SIGN PROVIDED BY WISCONSIN BUILT



A1 SIGNAGE

Scale: 1 1/2" = 1'-0"



B4 ELEVATION @ COOKING AREA (102)

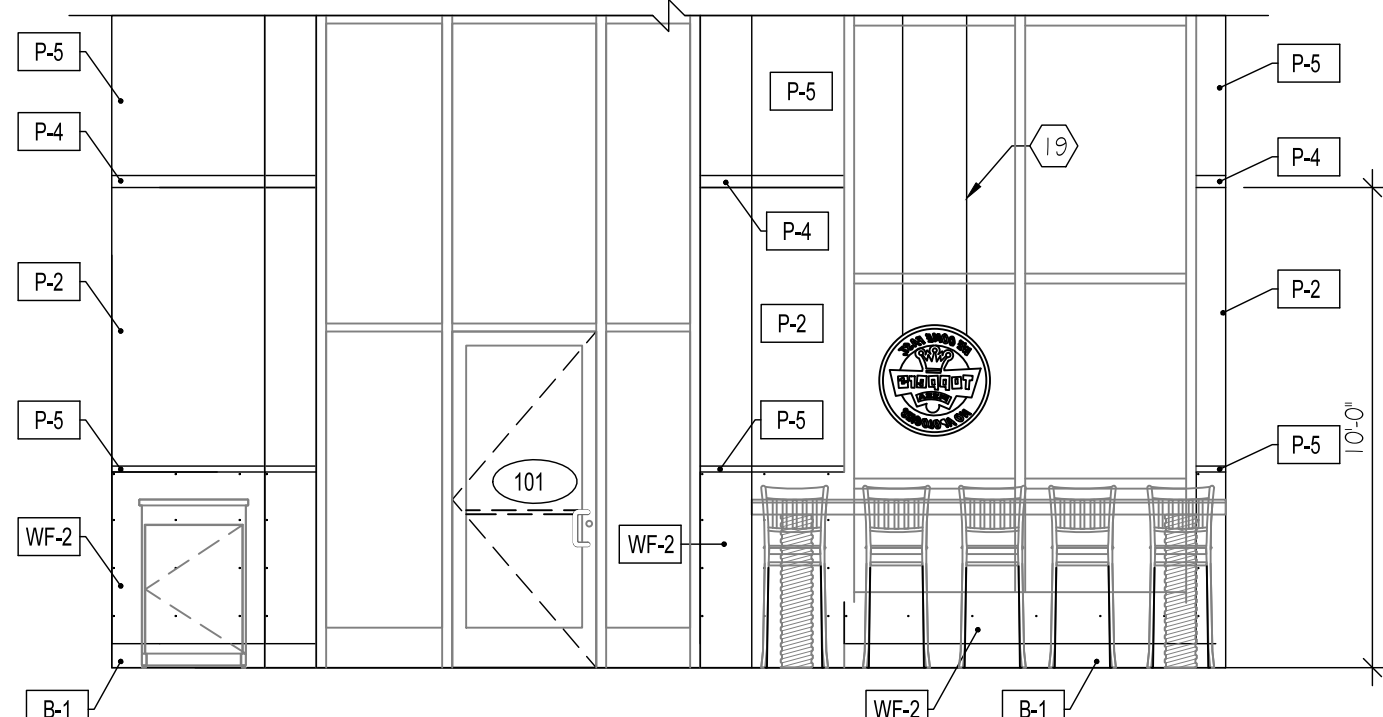
Scale: 1/4" = 1'-0"

B5 OPTIONAL WINDOW SIGN MOUNTING DETAIL

Scale: N.T.S.

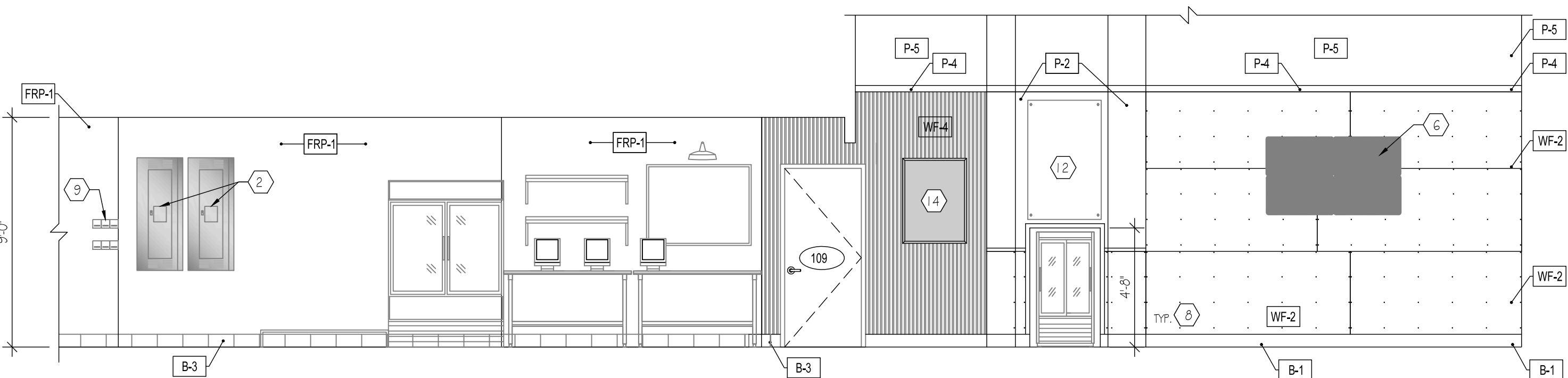
C1 ELEVATION @ DINING AREA (101)

Scale: 1/4" = 1'-0"



C2 ELEVATION @ DINING AREA (101) & COOKING AREA (102)

Scale: 1/4" = 1'-0"

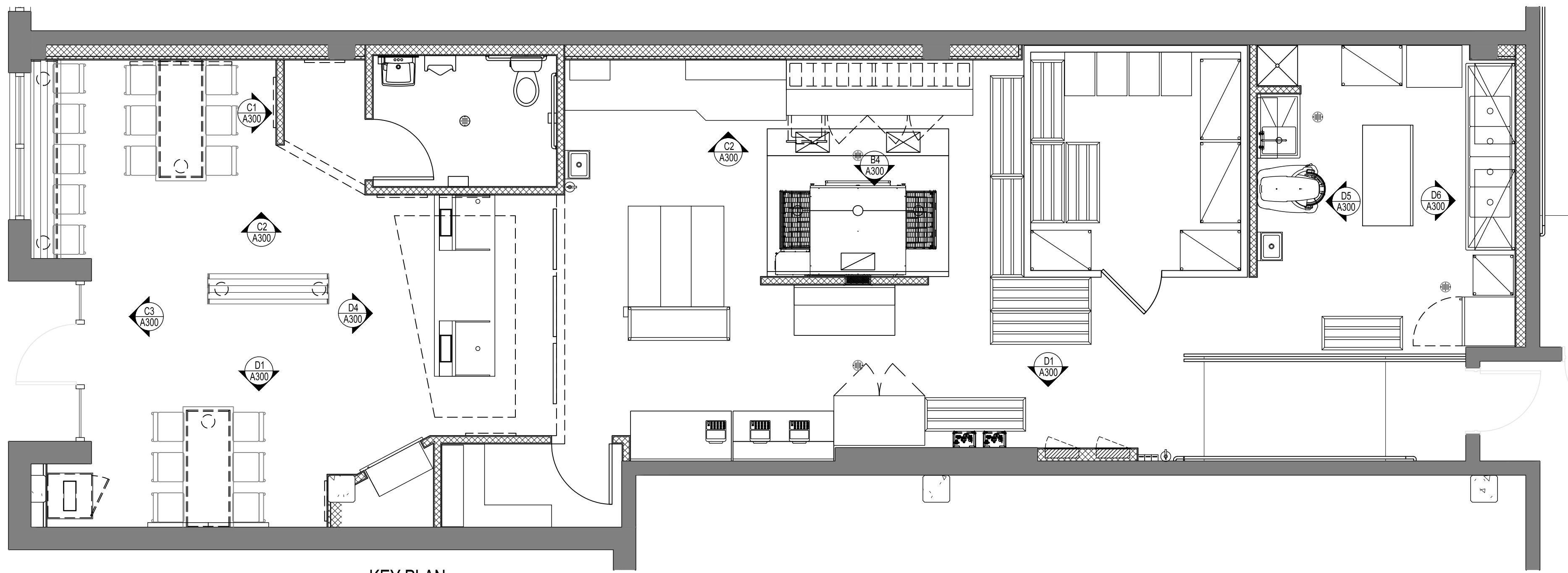


C3 ELEVATION @ DINING AREA (101)

Scale: 1/4" = 1'-0"

D1 ELEVATION @ DINING AREA (101) & KITCHEN AREA (108)

Scale: 1/4" = 1'-0"



KEY PLAN

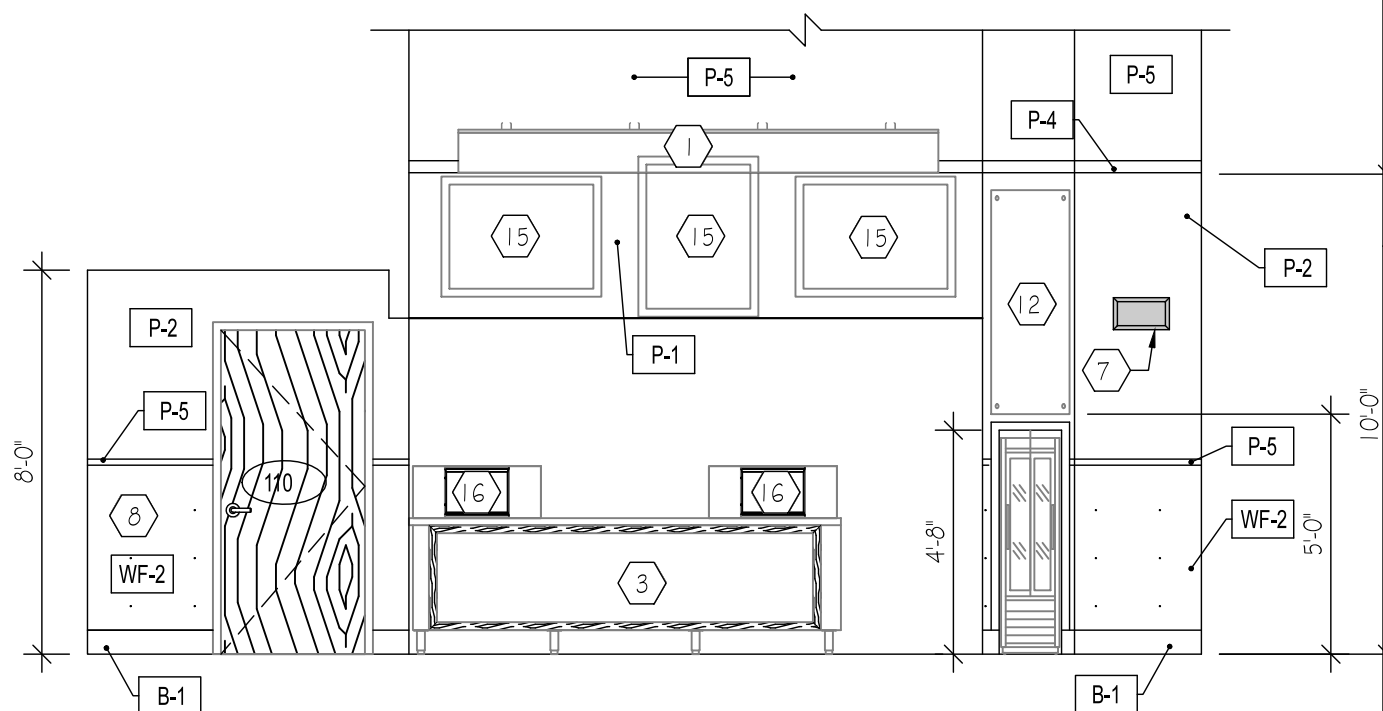
SCALE: 1/4" = 1'-0"

SHEET NOTES

- ALL MOUNTING HEIGHTS SHALL COMPLY WITH ALL LOCAL AND STATE ADA, AND BUILDING CODES RESTRICTIONS AND REQUIREMENTS.
- THE GC SHALL INSTALL ALL SOAP AND PAPER TOWEL DISPENSERS, IN THE KITCHEN AREA, AS FOLLOWS: SOAP DISPENSERS SHALL BE LOCATED DIRECTLY OVER THE SINK AND PAPER TOWEL DISPENSERS SHALL BE LOCATED TO THE RIGHT SIDE OF THE SINK, WITHIN REACHING DISTANCE, BUT NOT DIRECTLY OVER THE SINK.
- REFER TO SCHEDULES FOR ADDITIONAL INFORMATION ON WALL AND DOOR FINISHES.
- ALL FRP SHALL BE INSTALLED WITH STANDARD TRIM PIECES.
- ALL PARTITIONS 4 DOOR FRAMES WILL RECEIVE AT LEAST TWO COATS OF PAINT. AT ACCENT WALLS OF A DARK COLOR PROVIDE A TINTED BASE COAT FOLLOWED BY TWO FINISH COATS. SEE THE DOOR SCHEDULE FOR THE DOOR FINISH.
- ALL FINISHES SHALL COMPLY WITH THE FLAME SPREAD AND SMOKE GENERATED RATINGS.
- REFER TO MATERIAL NOTES ON A120
- ALL GWB BOX OUTS, SURFACE MOUNTED RACEWAYS ETC SHALL BE PAINTED SAME AS THE ADJACENT WALL FINISH.

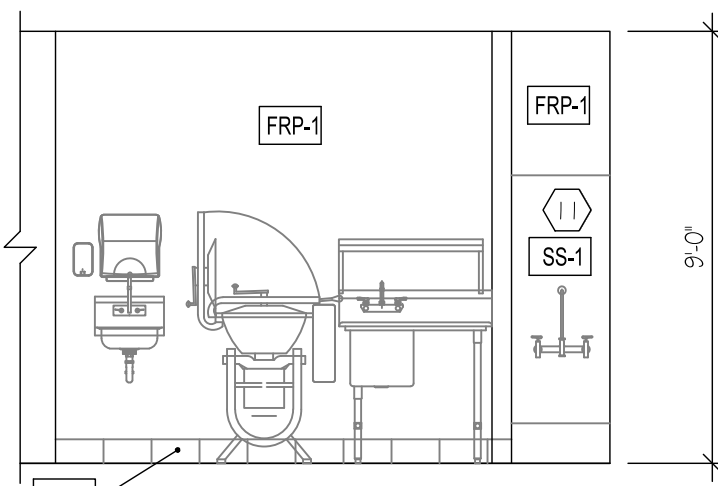
CODED NOTES

- MENU BOARD - SEE DETAIL A3/A130
- ELECTRICAL PANEL - SEE ELECTRICAL DRAWINGS
- MILLWORK, BY MILLWORK VENDOR. - SEE SHEET Q500 AND MILLWORK SHOP DRAWINGS.
- STAINLESS STEEL EXHAUST HOOD BY CAPTIVE AIRE - SEE MECHANICAL DRAWINGS
- CROWN LOGO ON BRICK BY G.C., PAINT FINISH TO BE FLAT, SPONGE PAINT LOGO ON BRICK. TEMPLATE PROVIDED BY - GC / SIGN COMPANY - SEE DETAIL A1 ON SHEET A120
- (4) 32" FLAT SCREEN TVS, TVS TO BE MOUNTED CORNER TO CORNER WITH BLACK SQUARE CORNER BORDERS - T.O. TV MOUNTED @ 90° - ARTWORK BORDER TO BE PAINTED BLACK
- BUSINESS LICENSE FRAME(S)
- REFER TO DETAIL A2 ON SHEET A120 FOR PLYWOOD SCREW PATTERN - STAGGER JOINTS @ FULL HEIGHT PLYWOOD
- DELIVERY CASH BOXES
- FRANCHISEE POSTER (24"x36") - SNAP FRAMES BY VENDOR - GRAPHICS BY MAPF SITE
- G.C. TO PROVIDE STAINLESS STEEL BACKSPLASH BEHIND MOP SINK
- WORD WALL - REFER TO DETAIL C3 ON SHEET Q500 FOR BLOCKING LOCATIONS
- CHALK BOARD (30"x40")
- PROMOTIONAL BOARD (30"x40") - SNAP FRAMES BY VENDOR - GRAPHICS BY MAPF SITE
- MENU BOARDS (30"x40") - SNAP FRAMES BY VENDOR - GRAPHICS BY MAPF SITE
- P.O.S. SHROUD FRAMES (11"x14") - SNAP FRAMES BY VENDOR - GRAPHICS BY MAPF SITE - SEE DETAIL D3/Q500
- STAINLESS STEEL FILLER PANEL TO BE PROVIDED BY HOOD MANUFACTURER
- MAGNETIC STRIP BY OWNER - ORDER FROM NATIONAL ACCOUNT REP KEITH - (608) 850-2973 keith.schwartz@bottle-studios.com
- GC TO VERIFY IF WINDOW SIGN CAN BE MOUNTED AT WINDOW SOFFIT. IF SIGN CAN NOT BE MOUNTED TO SOFFIT REFER TO DETAIL B5/A300 FOR POTIONAL MOUNTING DETAIL
-



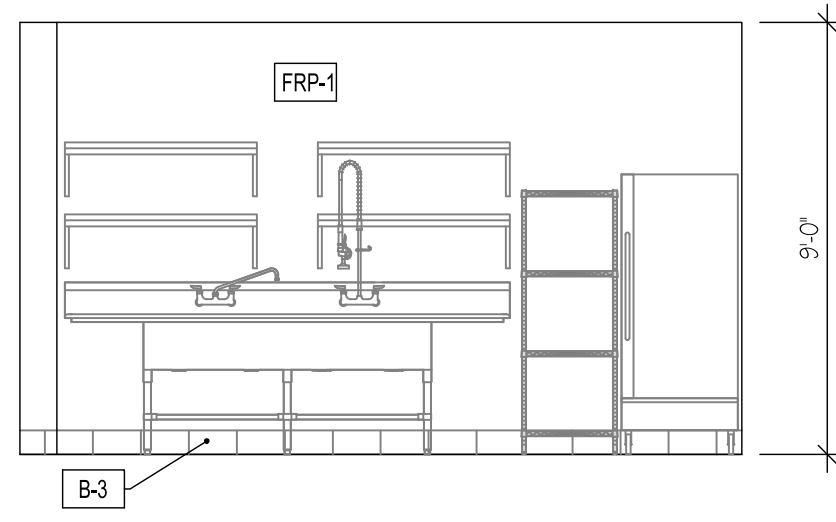
D4 ELEVATION @ DINING AREA (101)

Scale: 1/4" = 1'-0"



D4 ELEVATION @ DINING AREA (101)

Scale: 1/4" = 1'-0"



D6 ELEVATION @ KITCHEN (108)

Scale: 1/4" = 1'-0"



11487 Valley View Rd., Eden Prairie, MN 55344
Telephone: 952.941.8960 www.wilkusarch.com

I HEREBY CERTIFY THAT THIS PLAN, SPECIFICATION, OR REPORT WAS PREPARED BY ME OR UNDER MY DIRECT SUPERVISION AND THAT I AM A DULY LICENSED ARCHITECT UNDER THE LAWS OF THE STATE OF MINNESOTA.

Print Name: MICHAEL J. WILKUS

Signature: _____
License No.: 16380
Date: _____



| REVISIONS | DATE | DESCRIPTION |
|-----------|----------|--------------|
| # | | |
| 1 | 06/12/14 | PERMIT & BID |
| 2 | 06/12/14 | OWNER REVIEW |

PROJECT NUMBER: 2014-0092
DRAWN BY: MK/JSS
CHECKED BY: JSS

SHEET TITLE:
INTERIOR ELEVATIONS

SHEET NUMBER:
A300