

# SE Corner of Hwy 102 & I-49

## Commercial Land For Sale Bentonville, AR

ALAN W. COLE  
PRINCIPAL | ARKANSAS  
MOB: 479 644 5849  
DIR: 479 845 1505  
alan.cole@colliers.com



COLLIERS INTERNATIONAL  
4204 S Pinnacle Hills Pkwy, Ste 102  
Rogers, Arkansas  
479 636 9000  
www.colliers.com/arkansas

Accelerating success.

## KEY FEATURES/HIGHLIGHTS

Price: \$995,000

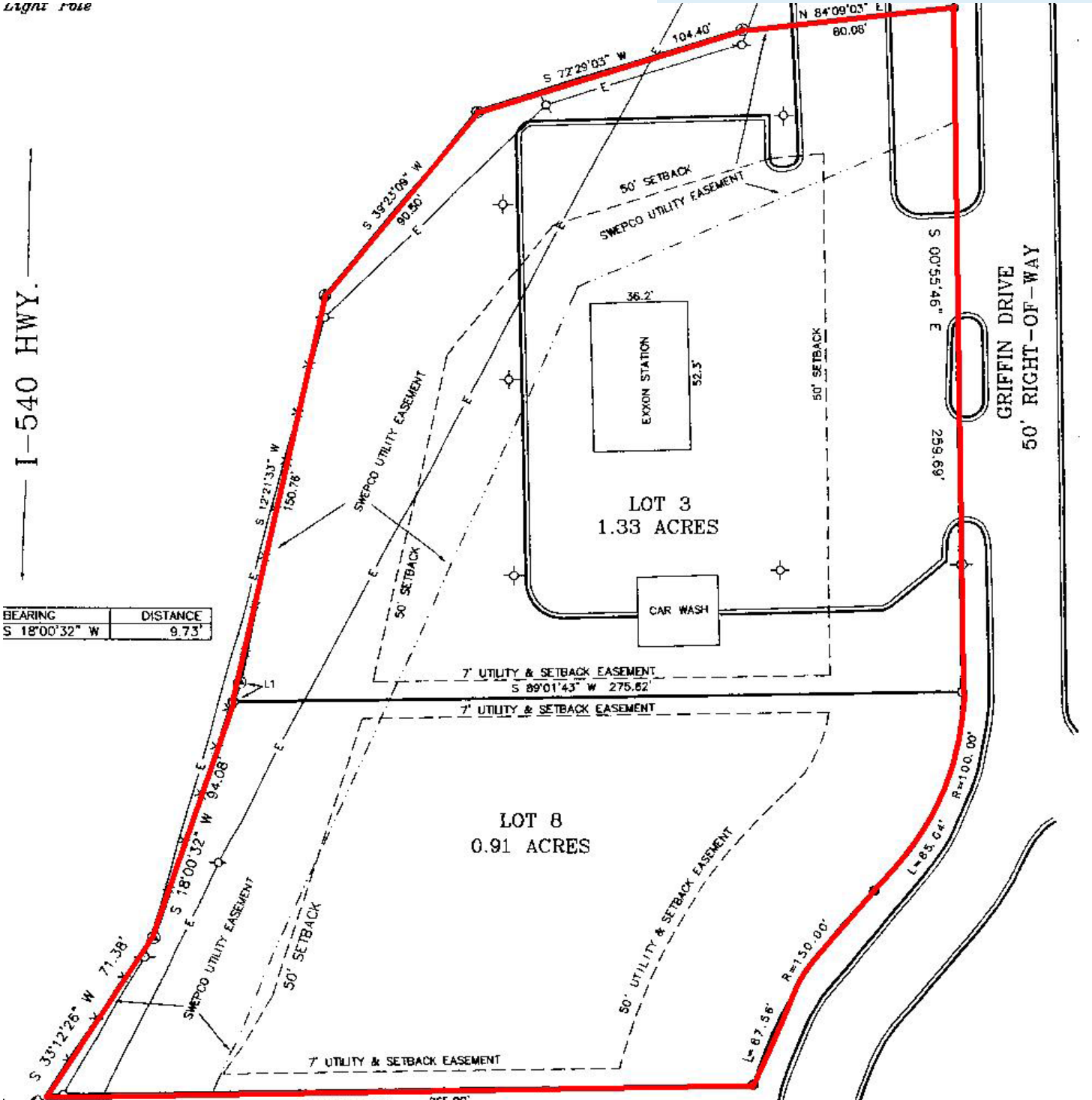
\$10.20 PSF

- > 2.24 Acres
- > Located directly across the street from the Northwest Arkansas Community College (NWACC) and near Mercy Health Systems, Sam's Club and Walmart Neighborhood Market
- > Property is on highly visible corner on I-49
- > Less than 1 mile from the proposed new World Headquarters for Walmart



Site Plan

light role



ALAN W. COLE  
PRINCIPAL | ARKANSAS  
MOB: 479 644 5849  
DIR: 479 845 1505  
[alan.cole@colliers.com](mailto:alan.cole@colliers.com)



COLLIERS INTERNATIONAL  
4204 S Pinnacle Hills Pkwy, Ste 102  
Rogers, Arkansas  
479 636 9000  
[www.colliers.com/arkansas](http://www.colliers.com/arkansas)