

For Lease > University & Snelling | St. Paul, MN

# MIDWAY UNITED VILLAGE

WELSH



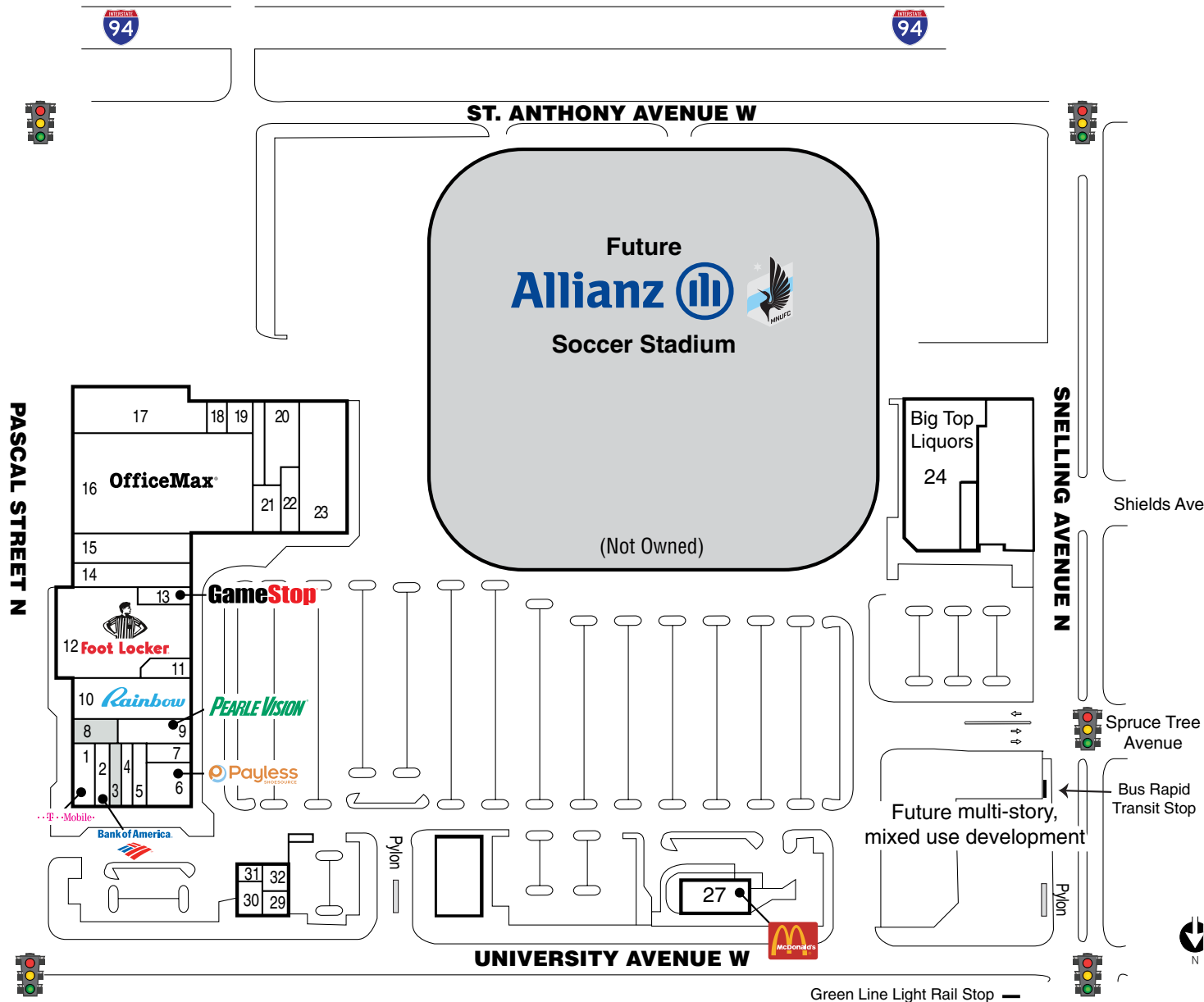
PARTNER  X TEAM  
INTERNATIONAL

SARA MARTIN  
TEL: 952 897 7723  
[sara.martin@colliers.com](mailto:sara.martin@colliers.com)

WELSH | COLLIERS  
4350 Baker Road, Suite 400  
Minnetonka, MN 55343  
[www.welshco.com](http://www.welshco.com)  
[www.colliers.com/msp](http://www.colliers.com/msp)



# MIDWAY UNITED VILLAGE | SNELLING & UNIVERSITY



## AVAILABILITY

1.	T-Mobile	2,441 sf
2.	Bank of America	1,283 sf
3.	<b>AVAILABLE (15' X 76')</b>	<b>1,155 SF</b>
4.	Golden Gate	1,125 sf
5.	Le Nails	1,125 sf
6.	Payless ShoeSource	3,514 sf
7.	GNC	1,278 sf
8.	<b>AVAILABLE OFFICE</b>	<b>1,314 SF</b>
9.	Pearle Vision	2,710 sf
10.	Rainbow Apparel	6,930 sf
11.	Great Clips	1,500 sf
12.	Foot Locker	15,278 sf
13.	Gamestop	2,520 sf
14.	To New York	4,200 sf
15.	Great Lakes Buffet	6,976 sf
16.	Office Max	25,800 sf
17.	Dancers Studio	10,095 sf
18.	Dancers Studio	1,000 sf
19.	Mimi's Beauty Salon	1,200 sf
20.	Dancers Studio	3,467 sf
21.	H&R Block	2,290 sf
22.	Sally Beauty	2,000 sf
23.	Family Dollar	9,960 sf
24.	Big Top Liquors	16,380 sf
27.	McDonald's	3,410 sf
29.	Money Express	800 sf
30.	Little Caesars	1,702 sf
31.	Apollo Locksmith	510 sf
32.	Jimmy John's Subs	1,016 sf

# PROJECT OVERVIEW

- > 420k SF Retail/Entertainment
- > 40 Acres
- > 367 Residential Units
- > 192 Hotel Rooms

## ALLIANZ VILLAGE

Midway United Village is ideally located in the densely populated Midway Neighborhood of St. Paul. This redevelopment will feature Allianz Field, the future home of the Minnesota United FC. The redevelopment of this 40-acre site will begin with Blocks A and B that will consist retail, entertainment and residential uses. Another key component to the development will be Victory Park that will front the stadium and provide great outdoor green space, play host to fans on game day and many other community events.

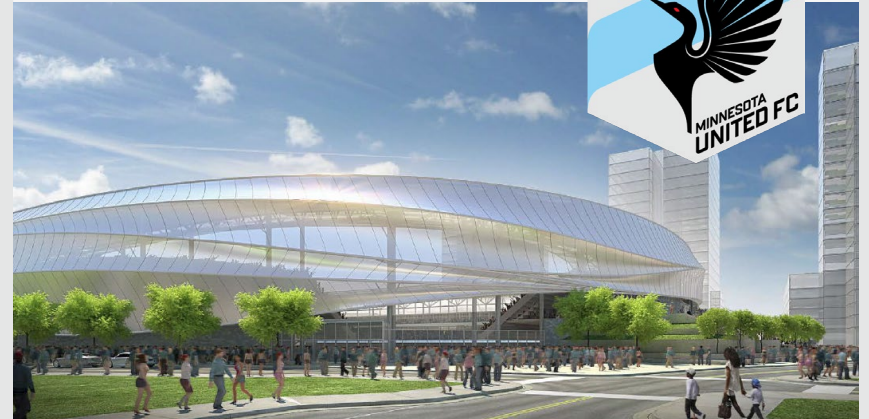


## LOCATION

Midway United Village is conveniently located between Minneapolis, St. Paul and MSP International Airport. It has direct access to I-94 that carries and the Snelling and University intersection is one of busiest in the metro area at 59,000 vehicles per day. It is also home to Snelling Station, the midway point on the LRT's Green Line. The Green Line connects Downtown Minneapolis to Downtown St. Paul and passes through the University of Minnesota campus. The University of Minnesota is the country's sixth largest university with more than 50,000 students. The Green Line carries on average 39,000 riders per day and is fast approaching its 2030 projected ridership of 45,000 riders per day. With easy access to both public transportation and one of the city's busiest freeways, Midway United Village will be a regional destination.

## ALLIANZ FIELD

- > Home to MN United FC Professional Soccer Team
- > 19,400 Seats
- > Completion 4Q 2018



## PUBLIC TRANSPORTATION

### Traffic Counts:

- I-94: 148,000 vehicles per day
- University Ave: 24,000 vehicles per day
- Snelling Ave: 35,000 vehicles per day

### Pedestrian Counts:

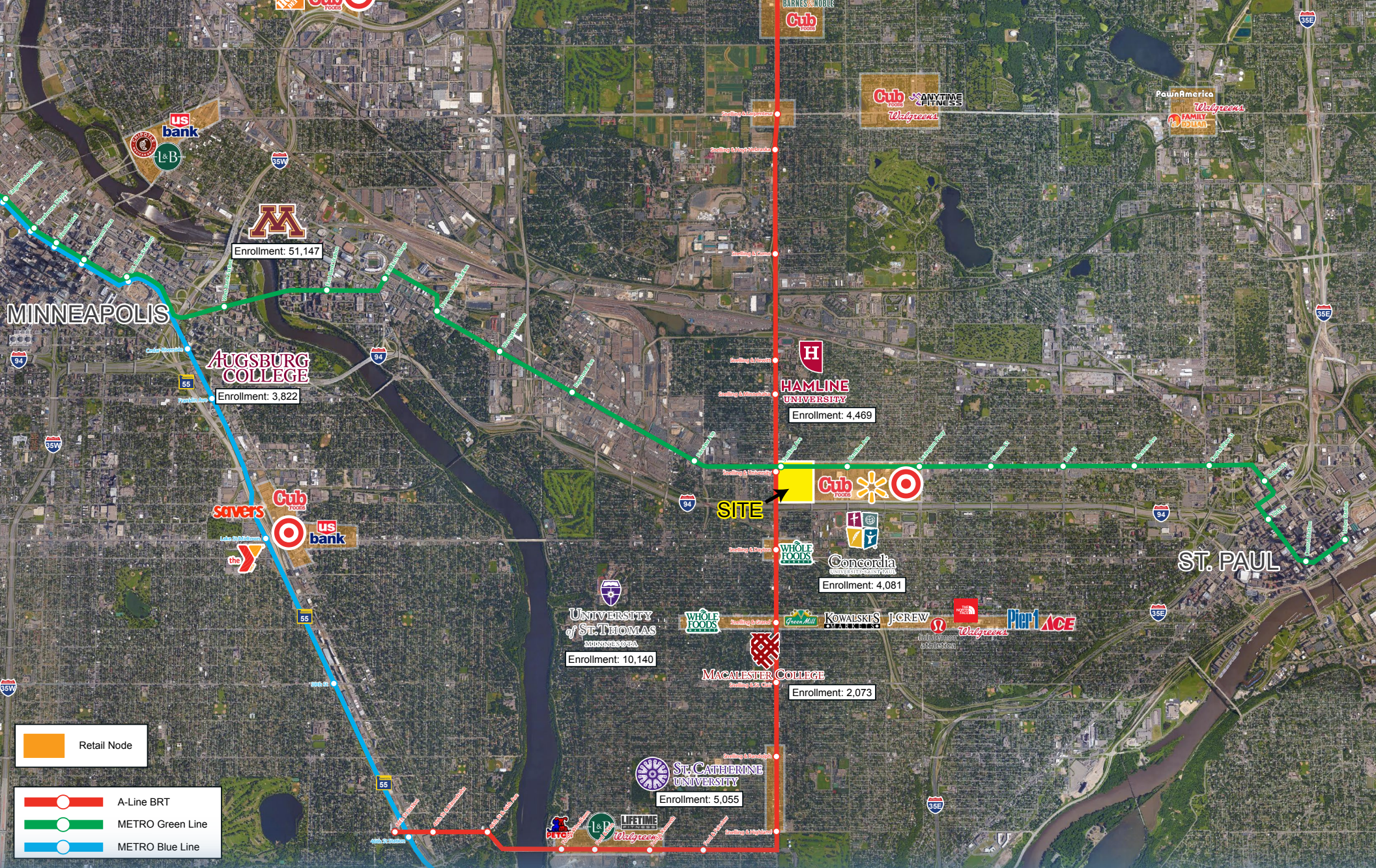
- Green Line: 39,386 avg. weekday rides
- A-Line Bus: 20 Stations every half mile to connect with intersecting bus routes. Running every 10 minutes.



## DEMOGRAPHICS

	1 Mile	3 Mile	5 Mile
Population	20,937	167,061	412,264
Median HH Income	\$45,873	\$52,225	\$45,075
Average HH Income	\$60,155	\$72,713	\$63,989





## CONTACT INFO:

SARA MARTIN  
TEL: 952 897 7723  
sara.martin@colliers.com

**WELSH**



PARTNER



**X TEAM**  
INTERNATIONAL