

For Lease > University & Snelling | St. Paul, MN

MIDWAY UNITED VILLAGE



SARA MARTIN
TEL: 952 897 7723
sara.martin@colliers.com

WELSH | COLLIERS
4350 Baker Road, Suite 400
Minnetonka, MN 55343
www.welshco.com
www.colliers.com/msp

MIDWAY UNITED VILLAGE | SNELLING & UNIVERSITY



AVAILABILITY

| | | |
|-----|-------------------------|-----------------|
| 1. | T-Mobile | 2,441 sf |
| 2. | Bank of America | 1,283 sf |
| 3. | Sweet Cajun | 1,155 sf |
| 4. | Golden Gate | 1,125 sf |
| 5. | Le Nails | 1,125 sf |
| 6. | Payless ShoeSource | 3,514 sf |
| 7. | GNC | 1,278 sf |
| 8. | AVAILABLE OFFICE | 1,314 SF |
| 9. | Pearle Vision | 2,710 sf |
| 10. | Rainbow Apparel | 6,930 sf |
| 11. | Great Clips | 1,500 sf |
| 12. | Foot Locker | 15,278 sf |
| 13. | Gamestop | 2,520 sf |
| 14. | To New York | 4,200 sf |
| 15. | Great Lakes Buffet | 6,976 sf |
| 16. | Office Max | 25,800 sf |
| 17. | Dancers Studio | 10,095 sf |
| 18. | Dancers Studio | 1,000 sf |
| 19. | Mimi's Beauty Salon | 1,200 sf |
| 20. | Dancers Studio | 3,467 sf |
| 21. | H&R Block | 2,290 sf |
| 22. | Sally Beauty | 2,000 sf |
| 23. | Family Dollar | 9,960 sf |
| 27. | McDonald's | 3,410 sf |
| 29. | Money Express | 800 sf |
| 30. | Little Caesars | 1,702 sf |
| 31. | Apollo Locksmith | 510 sf |
| 32. | Jimmy John's Subs | 1,016 sf |

PROJECT OVERVIEW

- > 420k SF Retail/Entertainment
- > 40 Acres
- > 367 Residential Units
- > 192 Hotel Rooms



ALLIANZ VILLAGE

Midway United Village is ideally located in the densely populated Midway Neighborhood of St. Paul. This redevelopment will feature Allianz Field, the future home of the Minnesota United FC. The redevelopment of this 40-acre site will begin with Blocks A and B that will consist retail, entertainment and residential uses. Another key component to the development will be Victory Park that will front the stadium and provide great outdoor green space, play host to fans on game day and many other community events.

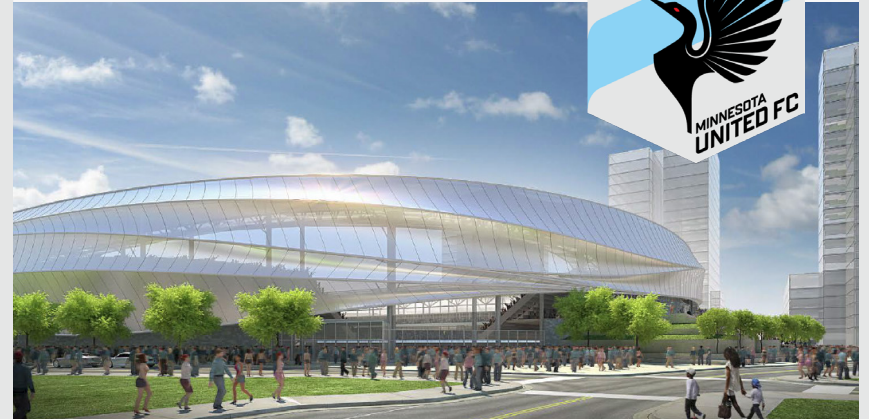


LOCATION

Midway United Village is conveniently located between Minneapolis, St. Paul and MSP International Airport. It has direct access to I-94 that carries and the Snelling and University intersection is one of busiest in the metro area at 59,000 vehicles per day. It is also home to Snelling Station, the midway point on the LRT's Green Line. The Green Line connects Downtown Minneapolis to Downtown St. Paul and passes through the University of Minnesota campus. The University of Minnesota is the country's sixth largest university with more than 50,000 students. The Green Line carries on average 39,000 riders per day and is fast approaching its 2030 projected ridership of 45,000 riders per day. With easy access to both public transportation and one of the city's busiest freeways, Midway United Village will be a regional destination.

ALLIANZ FIELD

- > Home to MN United FC Professional Soccer Team
- > 19,400 Seats
- > Completion 4Q 2018



PUBLIC TRANSPORTATION

Traffic Counts:

- I-94: 148,000 vehicles per day
- University Ave: 24,000 vehicles per day
- Snelling Ave: 35,000 vehicles per day

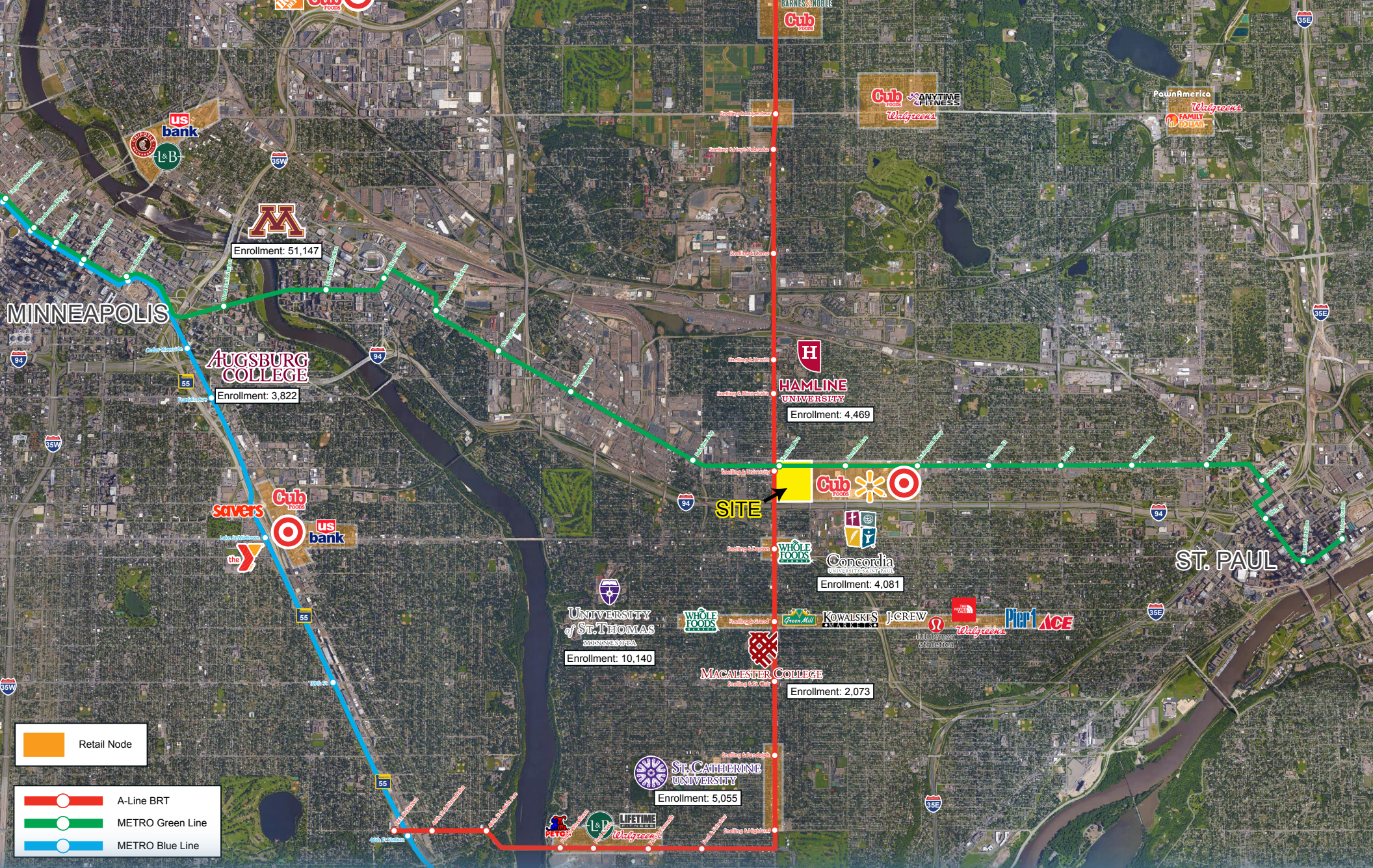
Pedestrian Counts:

- Green Line: 39,386 avg. weekday rides
- A-Line Bus: 20 Stations every half mile to connect with intersecting bus routes. Running every 10 minutes.



DEMOGRAPHICS

| | 1 Mile | 3 Mile | 5 Mile |
|-------------------|----------|----------|----------|
| Population | 20,937 | 167,061 | 412,264 |
| Median HH Income | \$45,873 | \$52,225 | \$45,075 |
| Average HH Income | \$60,155 | \$72,713 | \$63,989 |



CONTACT INFO:

SARA MARTIN
 TEL: 952 897 7723
 sara.martin@colliers.com

