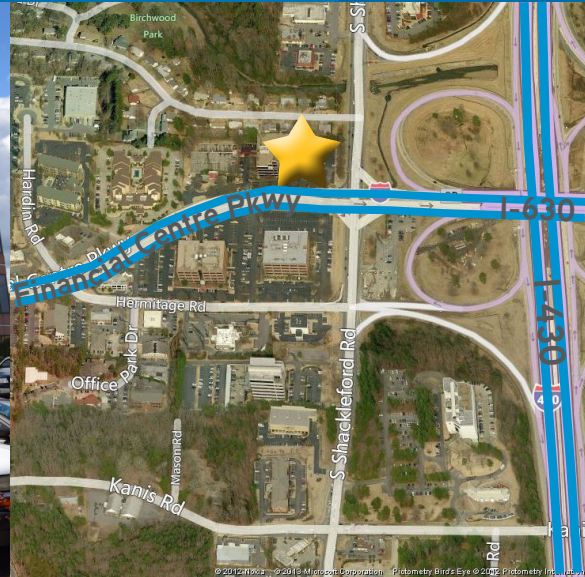


FOR LEASE > WEST LITTLE ROCK OFFICE

Kirkpatrick Plaza

10800 FINANCIAL CENTRE PARKWAY, LITTLE ROCK, AR 72211



Availability and Rate

Class "A" office space

Lease rate: \$18.75 RSF (Full Service)

Available space: 425 RSF to 18,317 RSF

Parking ratio: 3.75/1,000

Information & Amenities

- > On-site property management and maintenance
- > At intersection of I-630 & I-430
- > 10 minutes to downtown
- > Shared tenant conference facility
- > Covered parking
- > Tenant finish negotiable
- > Floor plans available on pages 2-6
- > 15 Minutes to Little Rock National Airport
- > Located by:
 - Marriott Suites
 - Embassy Suites
 - Numerous Restaurants

Contact Us

LISTING AGENTS:

JUSTIN BENTLEY

501 372 6161 | EXT. 739

LITTLE ROCK, AR

justin.bentley@colliers.com

MARK BENTLEY, SIOR

501 372 6161 | EXT. 734

LITTLE ROCK, AR

mark.bentley@colliers.com

PROPERTY MANAGER:

KAREN KEATHLEY, CPM

501 907 0185

LITTLE ROCK, AR

karen.keathley@colliers.com

This document has been prepared by Colliers International for advertising and general information only. Colliers International makes no guarantees, representations or warranties of any kind, expressed or implied, regarding the information including, but not limited to, warranties of content, accuracy and reliability. Any interested party should undertake their own inquiries as to the accuracy of the information. Colliers International excludes unequivocally all inferred or implied terms, conditions and warranties arising out of this document and excludes all liability for loss and damages arising there from.

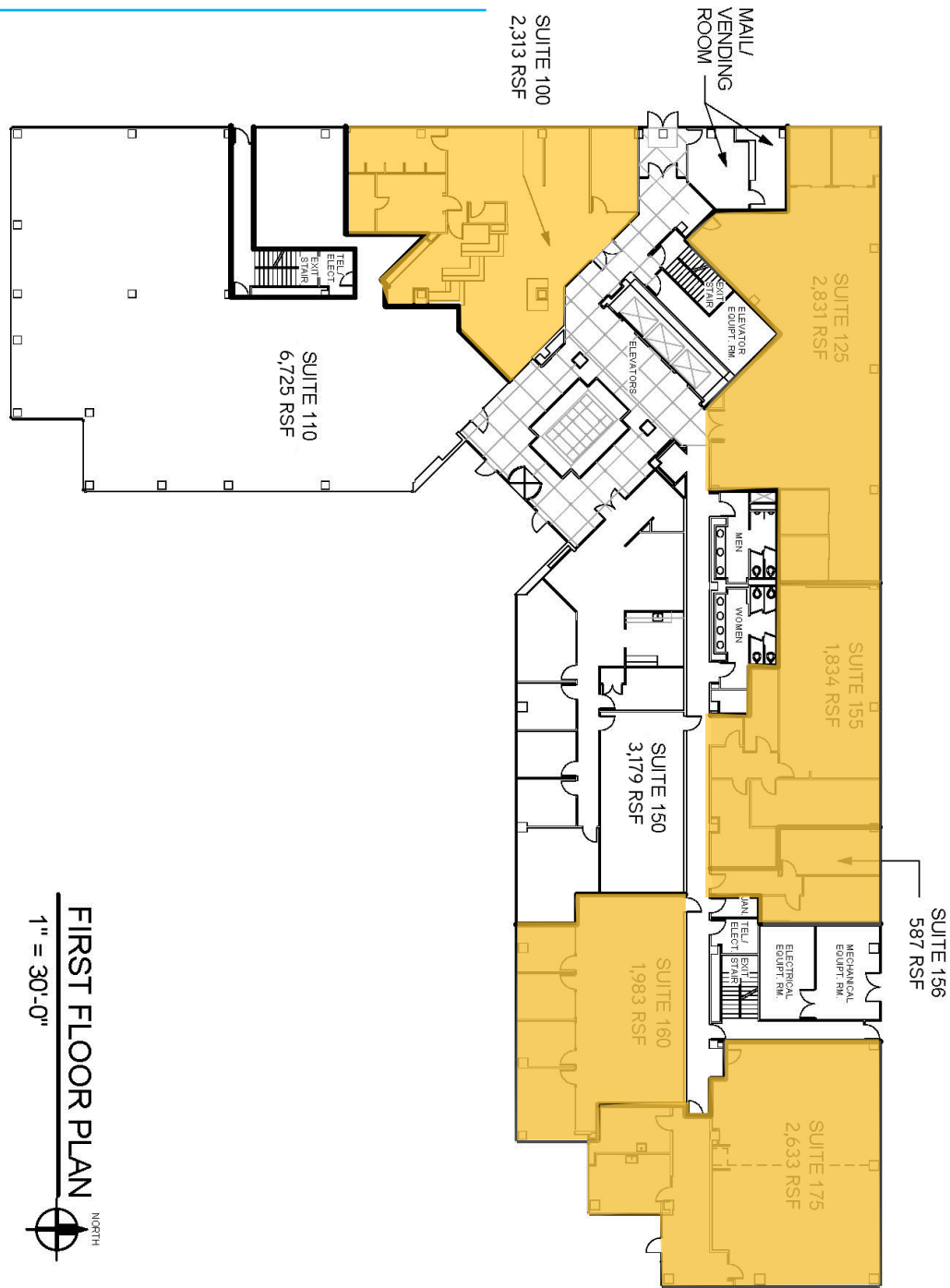
COLLIERS INTERNATIONAL

1 Allied Drive, Suite 1500

Little Rock, AR 72202

www.colliers.com/arkansas

First Floor Plan



FIRST FLOOR PLAN
1" = 30'-0"



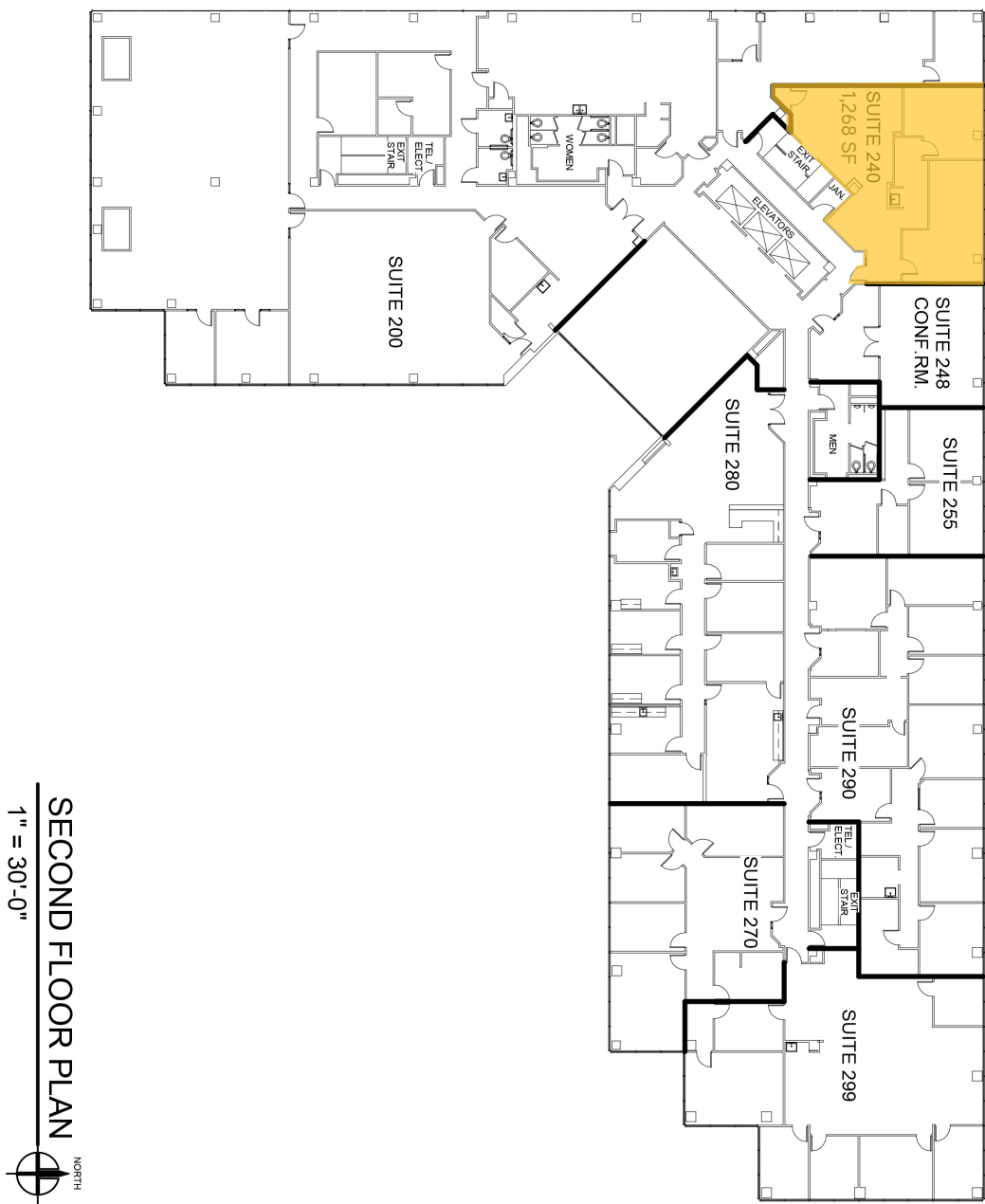
FLR-1

10/15/2015
15047

KIRKPATRICK PLAZA
10800 FINANCIAL CENTER PKWY
LITTLE ROCK, ARKANSAS



Second Floor Plan



SECOND FLOOR PLAN
1" = 30'-0"



FLR-2

05/17/17

15047

KIRKPATRICK PLAZA

10800 FINANCIAL CENTER PKWY

LITTLE ROCK, ARKANSAS

SCM

ARCHITECTS PLLC

1400 Kirk Road, Suite 220

Little Rock, AR 72202

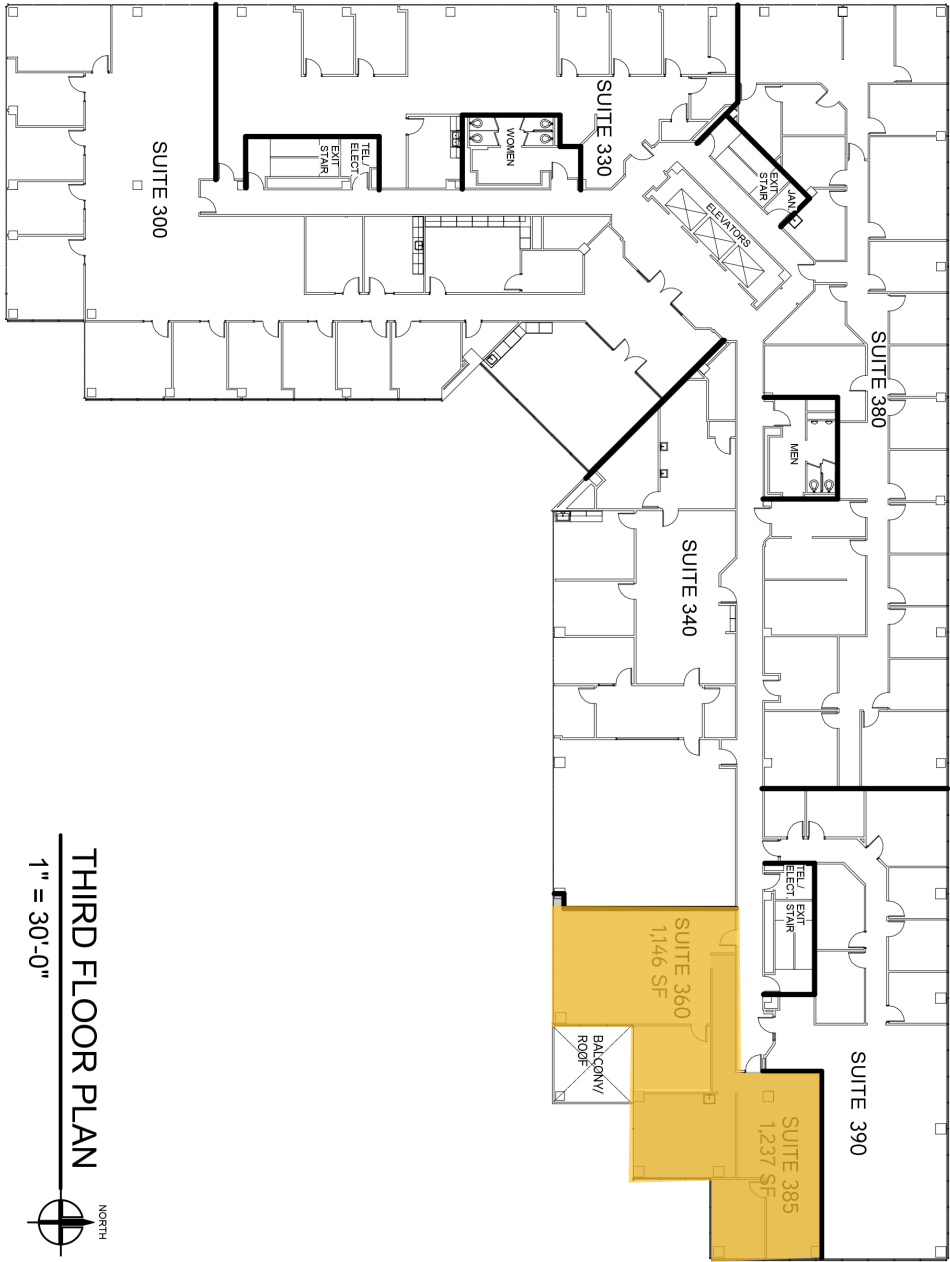
(501) 224-3000 Fax: (501) 224-6004

www.scmarchitects.com

This document has been prepared by Colliers International for advertising and general information only. Colliers International makes no guarantees, representations or warranties of any kind, expressed or implied, regarding the information including, but not limited to, warranties of content, accuracy and reliability. Any interested party should undertake their own inquiries as to the accuracy of the information. Colliers International excludes unequivocally all inferred or implied terms, conditions and warranties arising out of this document and excludes all liability for loss and damages arising there from.



Third Floor Plan



THIRD FLOOR PLAN
1" = 30'-0"



05/19/17
15047

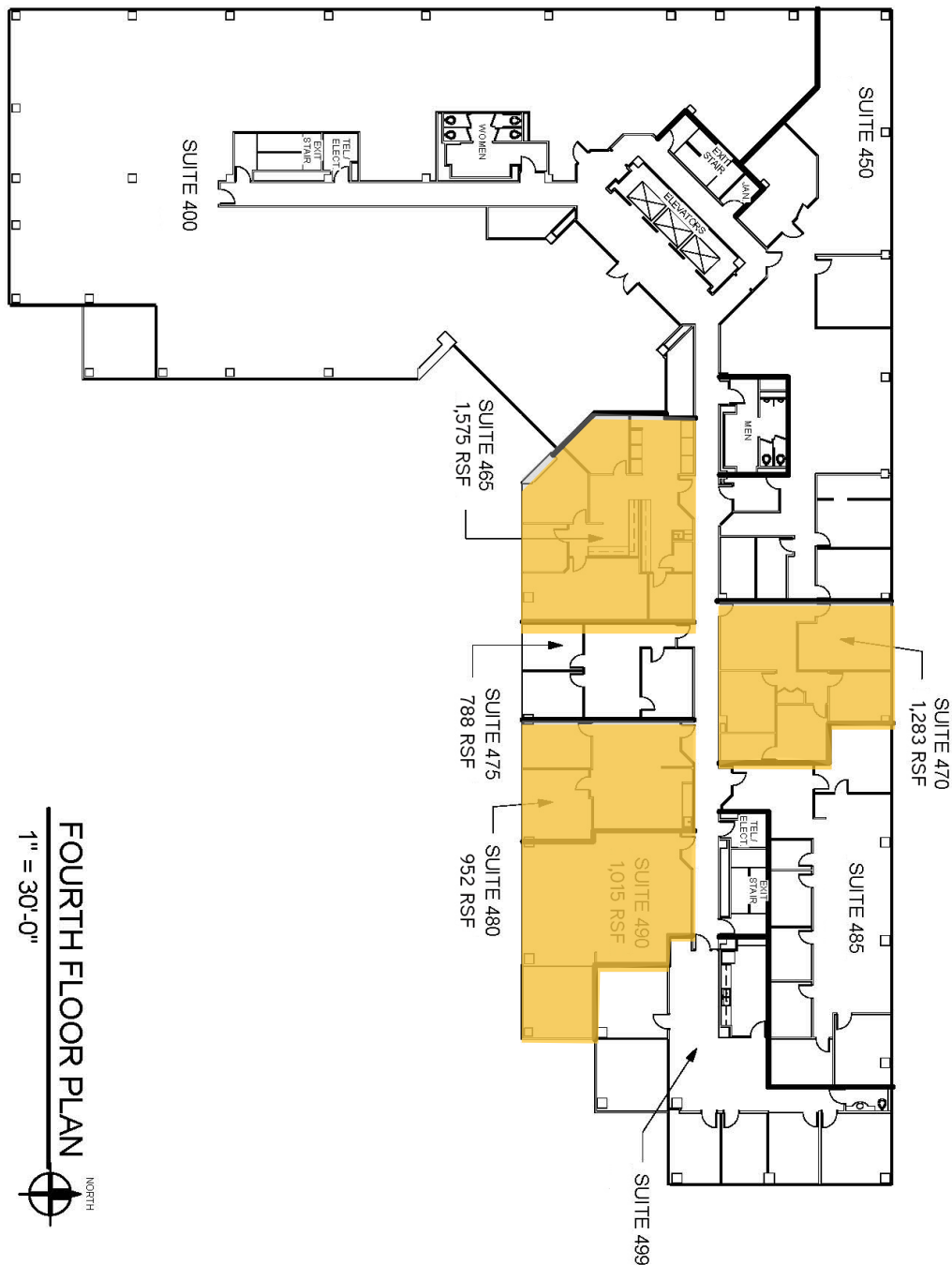


KIRKPATRICK PLAZA
10800 FINANCIAL CENTER PKWY
LITTLE ROCK, ARKANSAS

SCM
ARCHITECTS PLLC
1400 KIRK ROAD, SUITE 200
LITTLE ROCK, ARKANSAS 72203
www.scmarchitects.com



Fourth Floor Plan



FOURTH FLOOR PLAN
1" = 30'-0"



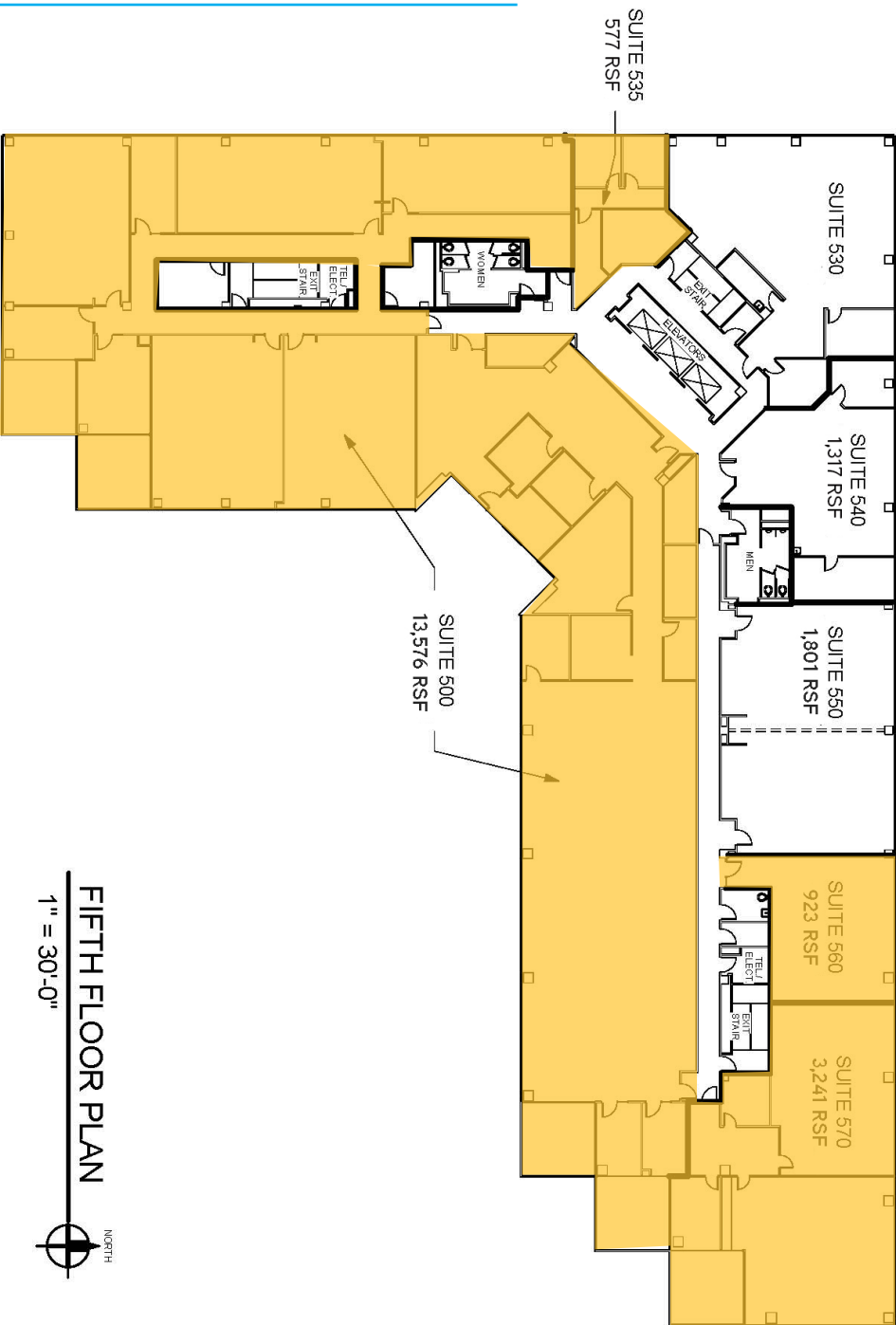
KIRKPATRICK PLAZA
10800 FINANCIAL CENTER PKWY
LITTLE ROCK, ARKANSAS



FLR-4
10/15/2015
15047



Fifth Floor Plan



FIFTH FLOOR PLAN
1" = 30'-0"



KIRKPATRICK PLAZA
10800 FINANCIAL CENTER PKWY
LITTLE ROCK, ARKANSAS



FLR-5
10/15/2015
15047

