



FOR SUBLEASE

Riverport Lakes West
13801 Riverport Drive
Maryland Heights, MO 63043

SUITE 200 | 11,880 RSF

\$14.00/SF, Full Service
Term through 4/30/2020



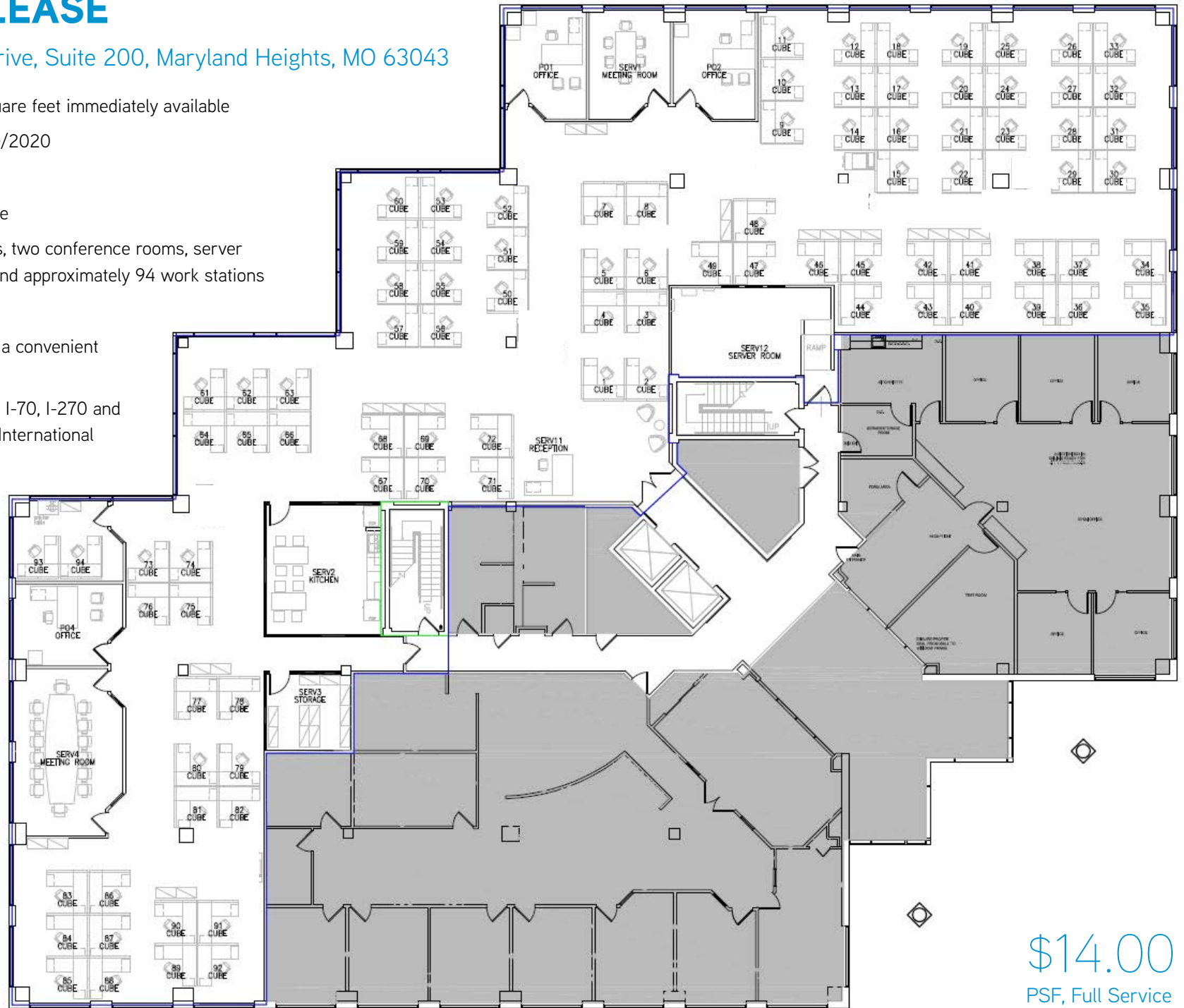
JIM LOFT, SIOR, CCIM
+1 314 584 6223
jim.loft@colliers.com

ANDY PORT, SIOR
+1 314 584 6254
andy.port@colliers.com

FOR SUBLEASE

13801 Riverport Drive, Suite 200, Maryland Heights, MO 63043

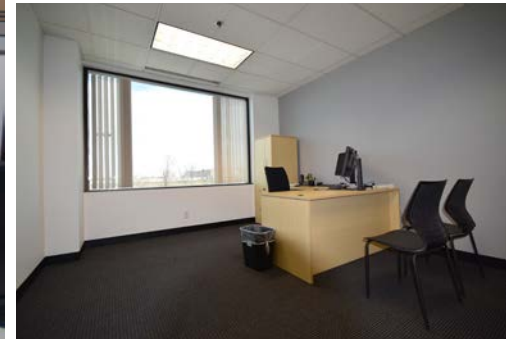
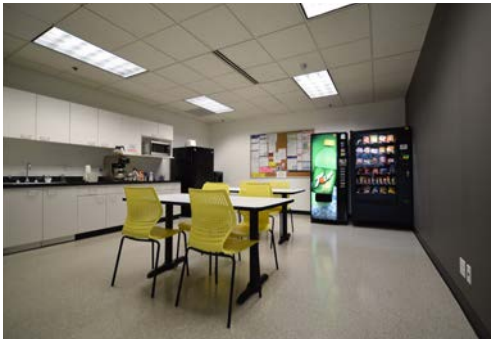
- 11,800 rentable square feet immediately available
- Term through 4/30/2020
- Furniture available
- Class A office space
- Four private offices, two conference rooms, server room, kitchenette and approximately 94 work stations
- 8/1,000 parking
- Park-like setting in a convenient suburban location
- Minutes away from I-70, I-270 and St. Louis-Lambert International Airport



\$14.00
PSF, Full Service

FOR SUBLEASE

13801 Riverport Drive, Suite 200, Maryland Heights, MO 63043



JIM LOFT, SIOR, CCIM
+1 314 584 6223
jim.loft@colliers.com

ANDY PORT, SIOR
+1 314 584 6254
andy.port@colliers.com

\$14.00
PSF, Full Service

Colliers International | 101 S. Hanley Road, Ste. 1400, St. Louis, MO 63105 | +1 314 863 4447 | colliers.co/stlouis

This document/email has been prepared by Colliers International for advertising and general information only. Colliers International makes no guarantees, representations or warranties of any kind, expressed or implied, regarding the information including, but not limited to, warranties of content, accuracy and reliability. Any interested party should undertake their own inquiries as to the accuracy of the information. Colliers International excludes unequivocally all inferred or implied terms, conditions and warranties arising out of this document and excludes all liability for loss and damages arising there from. This publication is the copyrighted property of Colliers International and /or its licensor(s). © 2018. All rights reserved. This communication is not intended to cause or induce breach of an existing listing agreement.