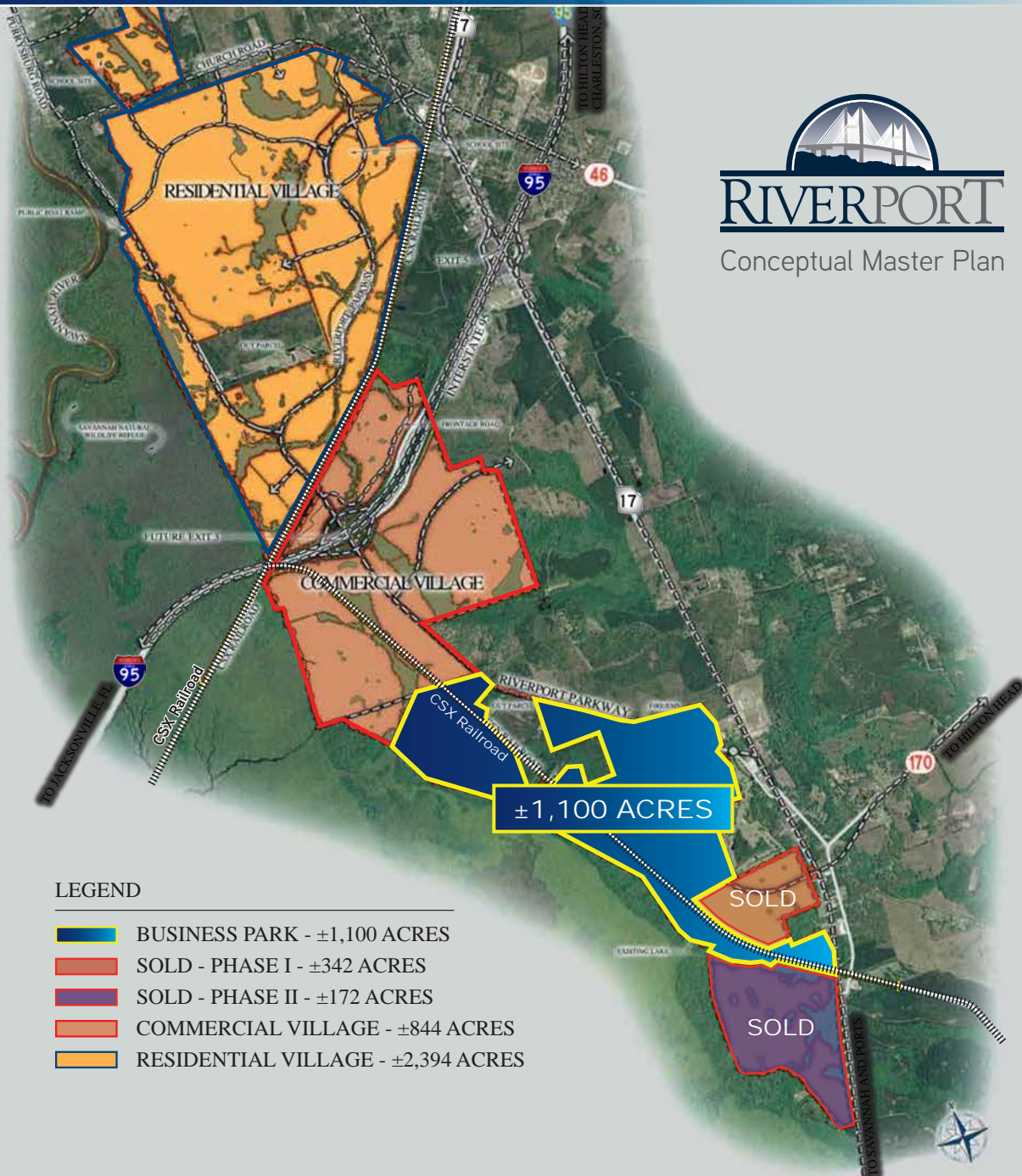


# RIVERPORT BUSINESS PARK



## RIVERPORT OVERVIEW

**RiverPort Business Park offers ±1,100 acres for warehousing, distribution and light industrial use**, located in Hardeeville, South Carolina, just east of the Savannah River on Highway 17. Situated 8 miles from the Port of Savannah and providing convenient access to Interstate 95, CSX rail lines, the Port, and the future Jasper County Ocean Terminal, RiverPort is in an unrivaled location along the eastern seaboard. With exceptional advantages, it is poised to become one of the Southeast's best logistics centers for warehousing, distribution and light industrial use.

## SITE SUMMARY

<b>Park Size</b>	±1,100 Acres
<b>Use</b>	Industrial Distribution
<b>Location</b>	Hardeeville, Jasper County, SC
<b>Rail</b>	CSX Potential
<b>Port Access</b>	Port of Savannah & the future Jasper County Ocean Terminal
<b>Road Access</b>	Highway 17 (four-lane divided highway)
<b>Interstate</b>	I-95 located 4 miles north
<b>Zoning</b>	PDD, Planned Development District, City of Hardeeville, South Carolina

**CLIFF DALES, SIOR**  
912 662 8009  
cliff.dales@colliers.com

**HILARY SHIPLEY**  
912 662 8013  
hilary.shipley@colliers.com



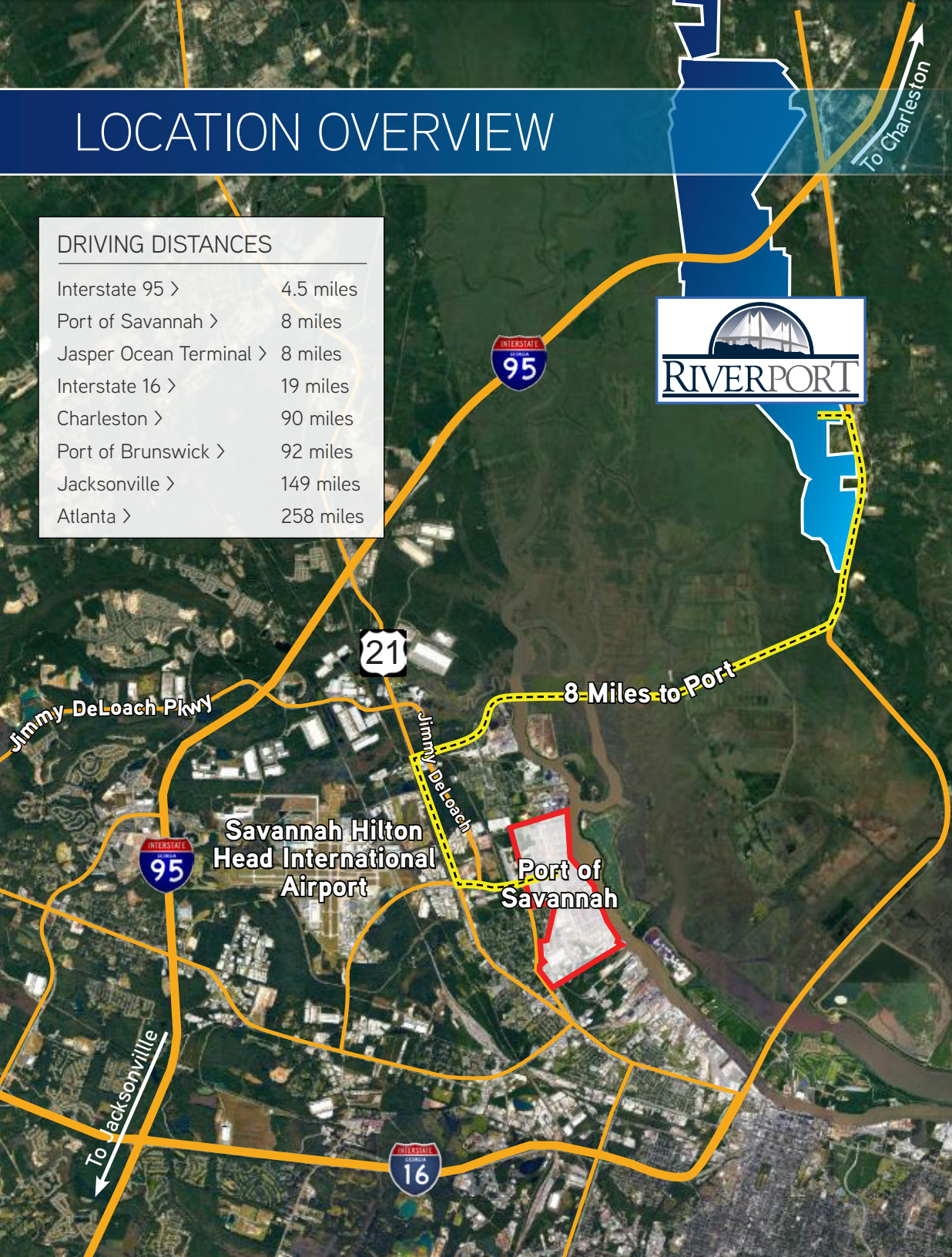
The information contained herein has been obtained from sources deemed reliable. While every reasonable effort has been made to ensure its accuracy, we cannot guarantee it. No responsibility is assumed for any inaccuracies. Readers are encouraged to consult their professional advisers prior to acting on any of the material contained in this report.



# LOCATION OVERVIEW

## DRIVING DISTANCES

Interstate 95 >	4.5 miles
Port of Savannah >	8 miles
Jasper Ocean Terminal >	8 miles
Interstate 16 >	19 miles
Charleston >	90 miles
Port of Brunswick >	92 miles
Jacksonville >	149 miles
Atlanta >	258 miles



## ADVANTAGES

- **RiverPort Business Park** offers **±1,100 acres** for **warehousing, distribution and light industrial use**
- Provides convenient access to **I-95, CSX rail lines, the Port, and the future Jasper County Ocean Terminal**
- Jasper Ocean Terminal, which is approximately 8 miles from the RiverPort Business Park, will provide **deepwater access for the Port of Savannah** and is currently in the approval process for construction and operation by a new Georgia/South Carolina ports authority
- RiverPort is **owned by an affiliate of Stratford Land**, a real estate land investment firm with strategic partnerships with leading Southeastern firms including Thomas & Hutton Engineering; MSK; Newkirk Environmental; and Southern Carolina Regional Development Alliance

## PORT OF SAVANNAH

Savannah is home to the **Port of Savannah** the **largest single-container terminal in North America**. Operated by the Georgia Ports Authority and specializing in break bulk, containers, RoRo, heavy-lift and project cargo, the port is comprised of two modern, deepwater terminals: Ocean Terminal and Garden City Terminal. **The Port of Savannah is the fastest-growing and fourth-largest port in the nation**, with more than 70% of the population reachable within a two-day drive.

**CLIFF DALES, SIOR**  
912 662 8009  
cliff.dales@colliers.com

**HILARY SHIPLEY**  
912 662 8013  
hilary.shipley@colliers.com



The information contained herein has been obtained from sources deemed reliable. While every reasonable effort has been made to ensure its accuracy, we cannot guarantee it. No responsibility is assumed for any inaccuracies. Readers are encouraged to consult their professional advisers prior to acting on any of the material contained in this report.