

FOR LEASE > CLASS A OFFICE SPACE



Everett Mall Office Park III

906 SE EVERETT MALL WAY, EVERETT, WA 98208



Available Space

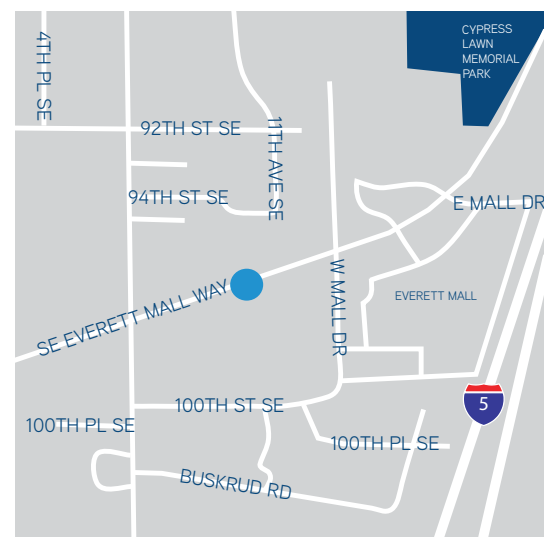
- > Suite 101: 2,219 RSF
- > Suite 120: 1,419 RSF
- > Suite 2XX: 2,285 RSF
- > Suite 100: 2,500 RSF
- > Suite 210: 6,527 RSF
- > Suite 200: 13,420 RSF
- > Suites 200/210/2XX: 22,052 RSF
- > Suite 300: 22,500 RSF
- > Suite 450: 1,740 RSF
- > Suite 500: 21,947 RSF (available 8/1/2018)

Features

- > Prime location with excellent access to I-5
- > Available immediately
- > Four parking stalls/1,000 SF

Rate

- > \$14.50/SF, NNN

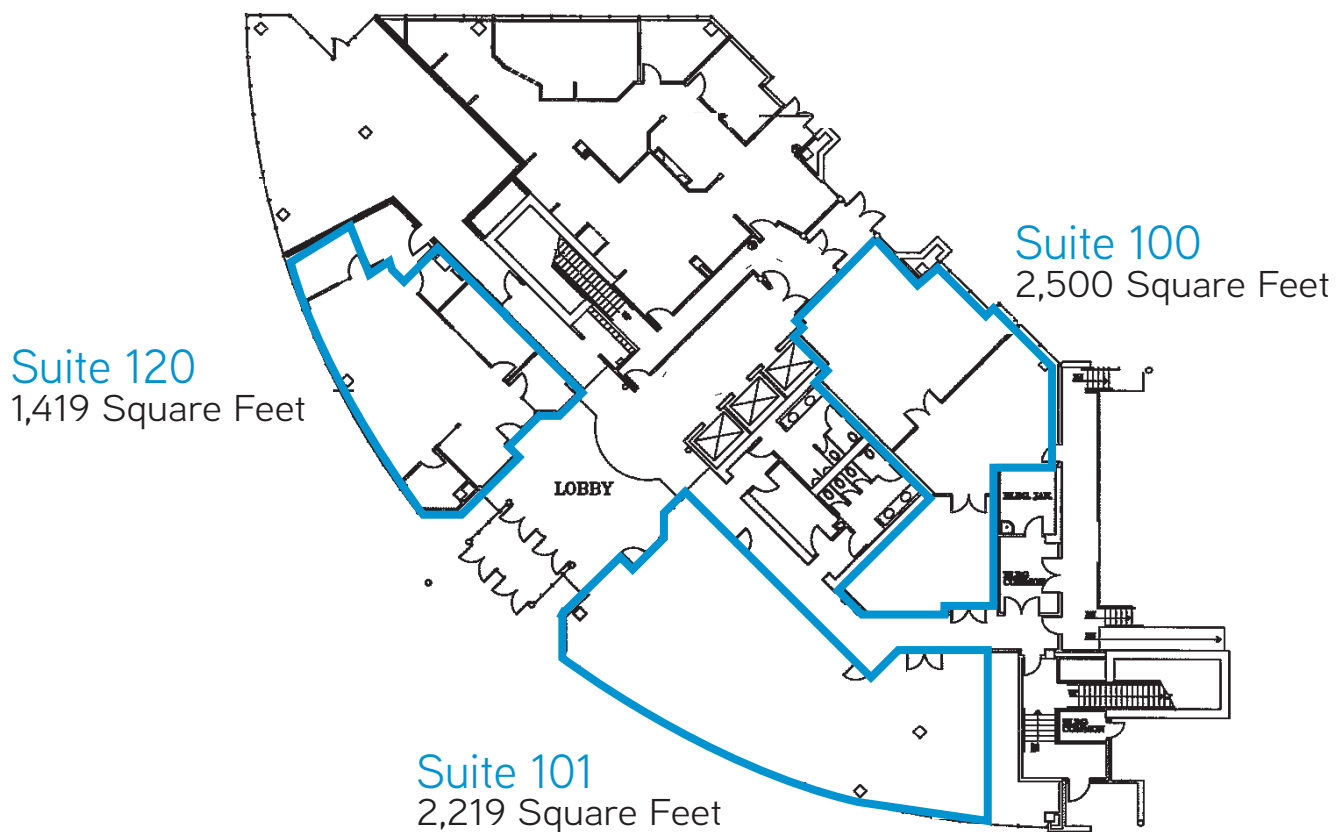


DEREK HEED
425 453 3133
BELLEVUE, WA
derek.heed@colliers.com

GREGG RIVA
425 453 3132
BELLEVUE, WA
gregg.riva@colliers.com

DAVID GUNTHER
425 453 4546
BELLEVUE, WA
david.gunther@colliers.com

COLLIERS INTERNATIONAL
11225 SE 6th Street, Suite 240
Bellevue, WA 98004
www.colliers.com



Entire 2nd Floor

22,052 Square Feet

Suite 200
13,420 Square Feet

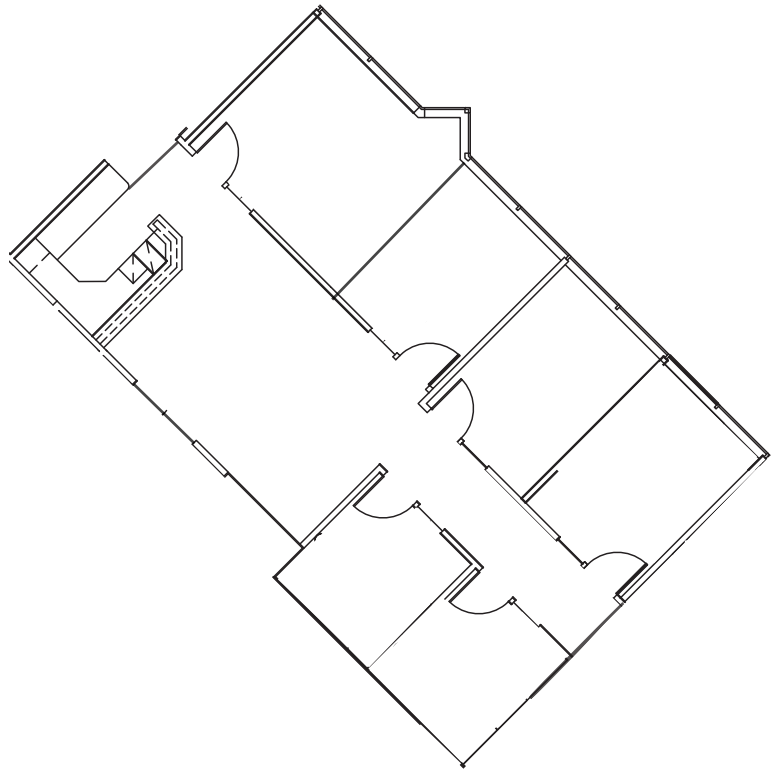
Suite 210
6,527 Square Feet

Suite 2XX
2,285 Square Feet

Suite 300
22,500 Square Feet

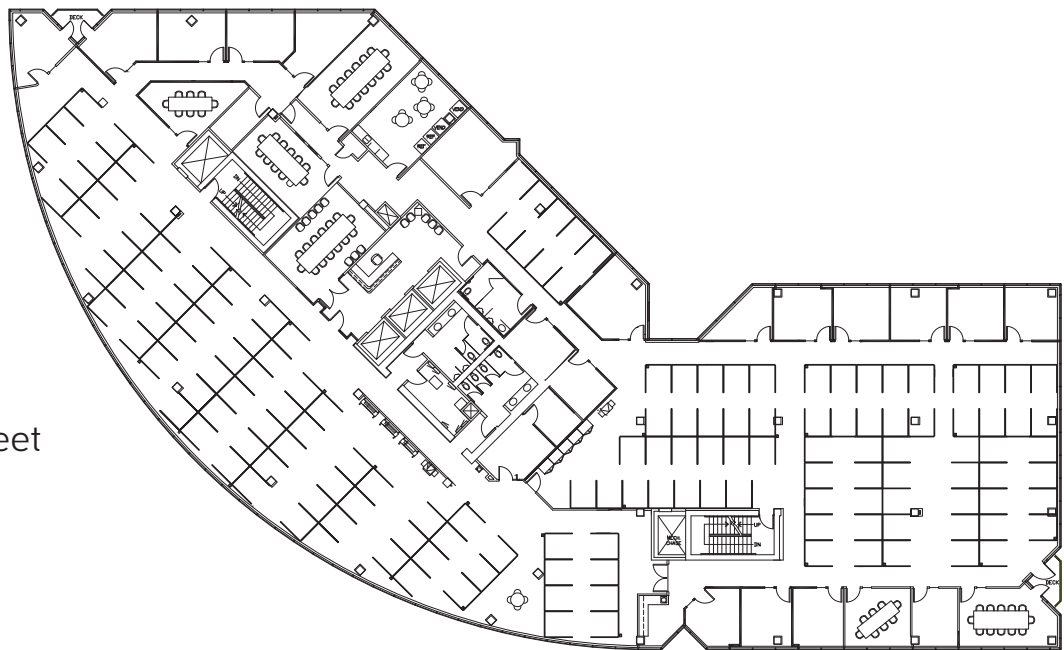
Suite 450

1,740 Square Feet



Suite 500

21,947 Square Feet



DEREK HEED
425 453 3133
BELLEVUE, WA
derek.heed@colliers.com

GREGG RIVA
425 453 3132
BELLEVUE, WA
gregg.riva@colliers.com

DAVID GUNTHER
425 453 4546
BELLEVUE, WA
david.gunther@colliers.com

COLLIERS INTERNATIONAL
11225 SE 6th Street, Suite 240
Bellevue, WA 98004
www.colliers.com