

FOR LEASE > CLASS A OFFICE SPACE



# Everett Mall Office Park III

906 SE EVERETT MALL WAY, EVERETT, WA 98208



## Available Space

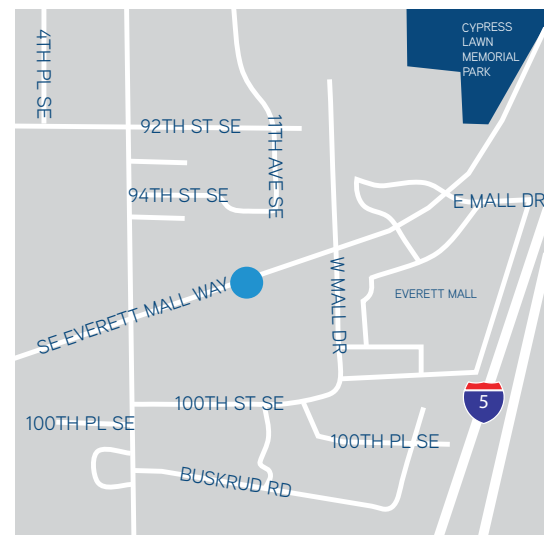
- > Suite 100: 2,500 RSF
- > Suite 101: 2,219 RSF
- > Suite 120: 1,419 RSF
- > Suite 200: 12,228 RSF
- > Suite 210: 3,557 RSF
- > Suite 220: 3,779 RSF
- > Suite 230: 2,668 RSF
- > Second Floor: 22,232 RSF
- > Suite 300: 22,500 RSF
- > Suite 450: 1,740 RSF
- > Suite 500: 21,947 RSF (available 8/1/2018)

## Features

- > Prime location with excellent access to I-5
- > Available immediately
- > Four parking stalls/1,000 SF

## Rate

- > \$14.50/SF, NNN

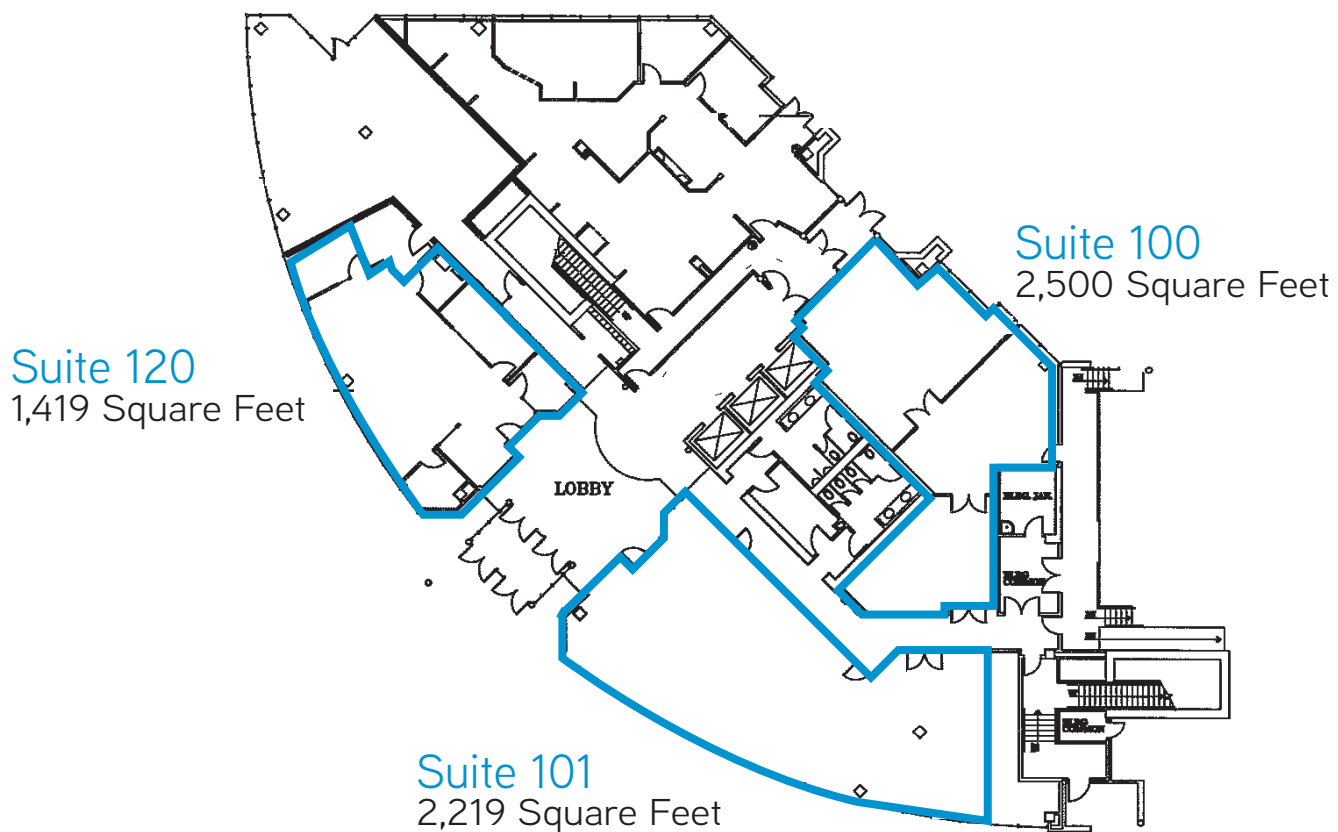


DEREK HEED  
425 453 3133  
BELLEVUE, WA  
derek.heed@colliers.com

GREGG RIVA  
425 453 3132  
BELLEVUE, WA  
gregg.riva@colliers.com

DAVID GUNTHER  
425 453 4546  
BELLEVUE, WA  
david.gunther@colliers.com

COLLIERS INTERNATIONAL  
11225 SE 6th Street, Suite 240  
Bellevue, WA 98004  
www.colliers.com





## Entire 2nd Floor

22,232 Square Feet

Suite 200  
12,228 Square Feet

Suite 210  
3,557 Square Feet

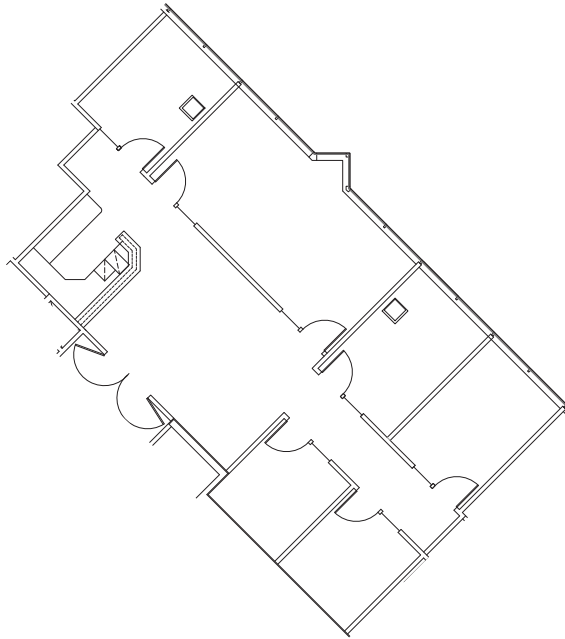
Suite 230  
2,668 Square Feet

Suite 220  
3,779 Square Feet

Suite 300  
22,500 Square Feet

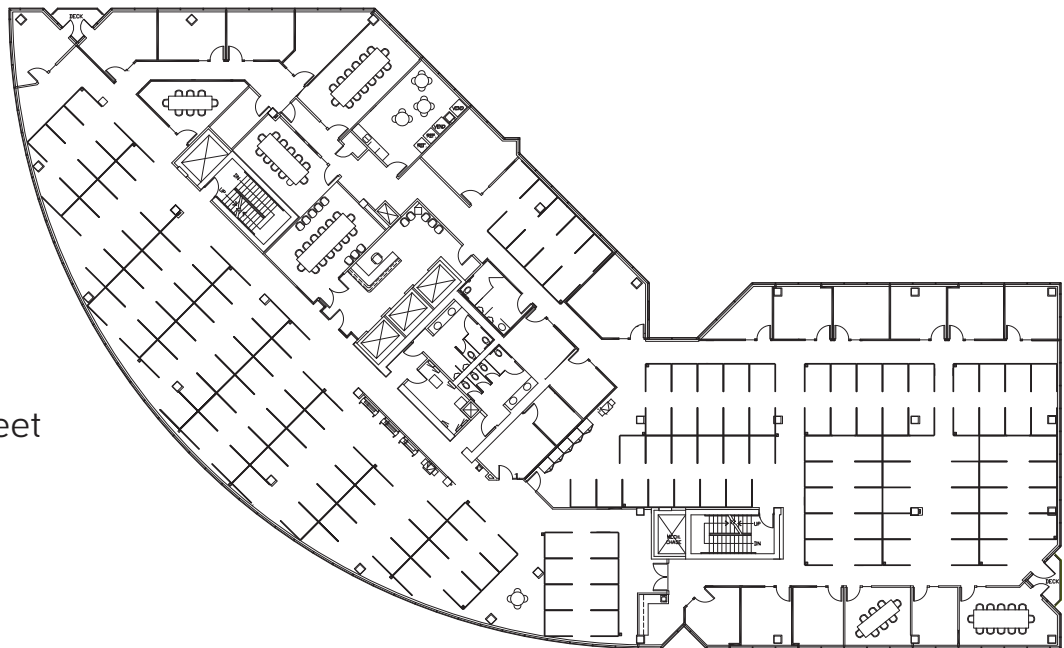
## Suite 450

1,740 Square Feet



## Suite 500

21,947 Square Feet



DEREK HEED  
425 453 3133  
BELLEVUE, WA  
[derek.heed@colliers.com](mailto:derek.heed@colliers.com)

GREGG RIVA  
425 453 3132  
BELLEVUE, WA  
[gregg.riva@colliers.com](mailto:gregg.riva@colliers.com)

DAVID GUNTHER  
425 453 4546  
BELLEVUE, WA  
[david.gunther@colliers.com](mailto:david.gunther@colliers.com)

COLLIERS INTERNATIONAL  
11225 SE 6th Street, Suite 240  
Bellevue, WA 98004  
[www.colliers.com](http://www.colliers.com)