



FOR SALE > 1.349 ACRES IN CONCORD, CA

CONCORD INDUSTRIAL LAND



PROPERTY HIGHLIGHTS

- > Owned by:
Union Pacific Railroad
- > Parcel Number:
110-130-050-5
110-130-051-3
- > County:
Contra Costa
- > Current Use:
Vacant Land
- > General Plan / Zoning:
Business Park (BP) /
Office Business Park (OBP)
- > Potential Use:
Light Industrial
- > Lot Size:
1.349 Acre Site,
Two Parcels
- > \$815,000

CONTACT INFORMATION

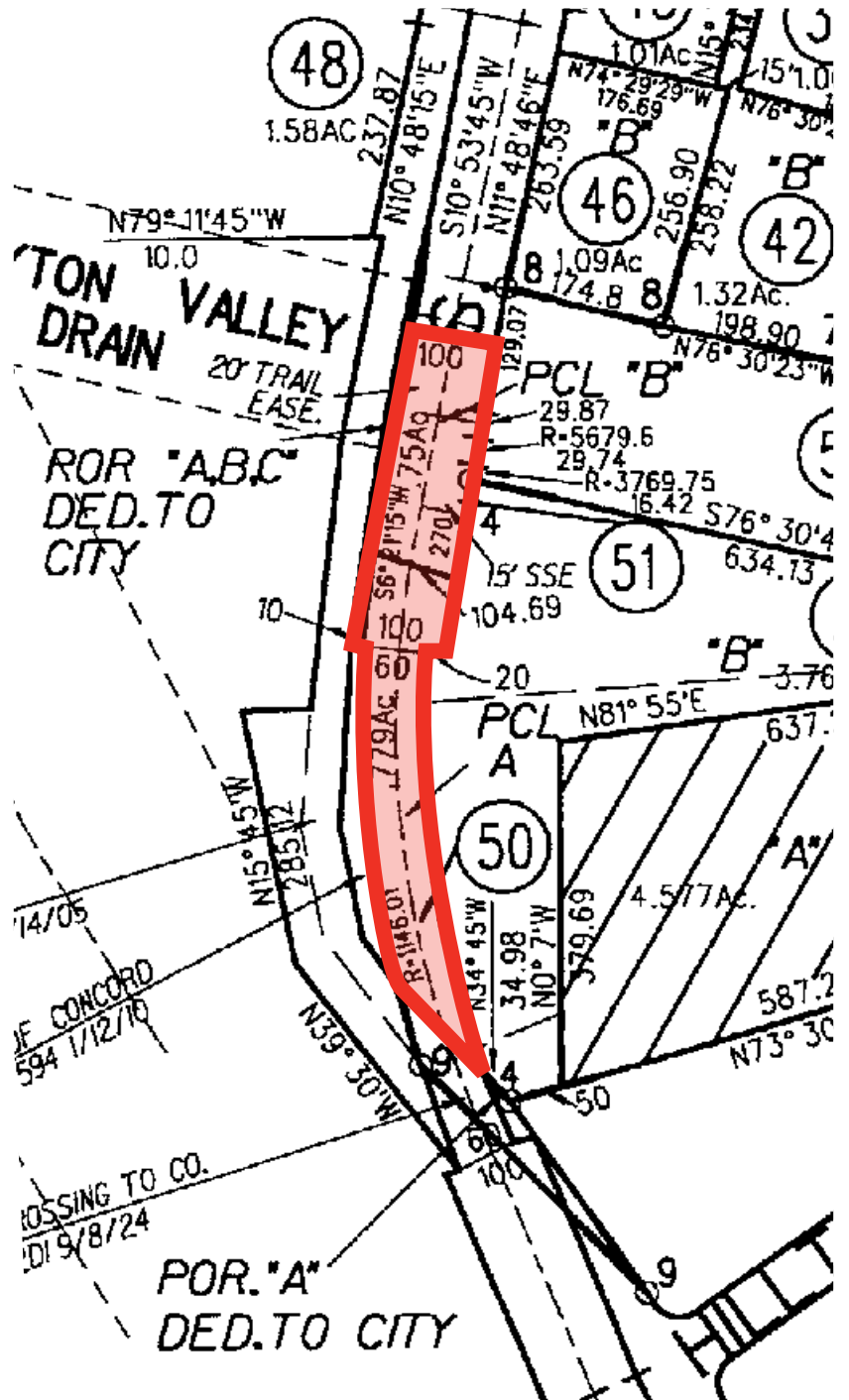
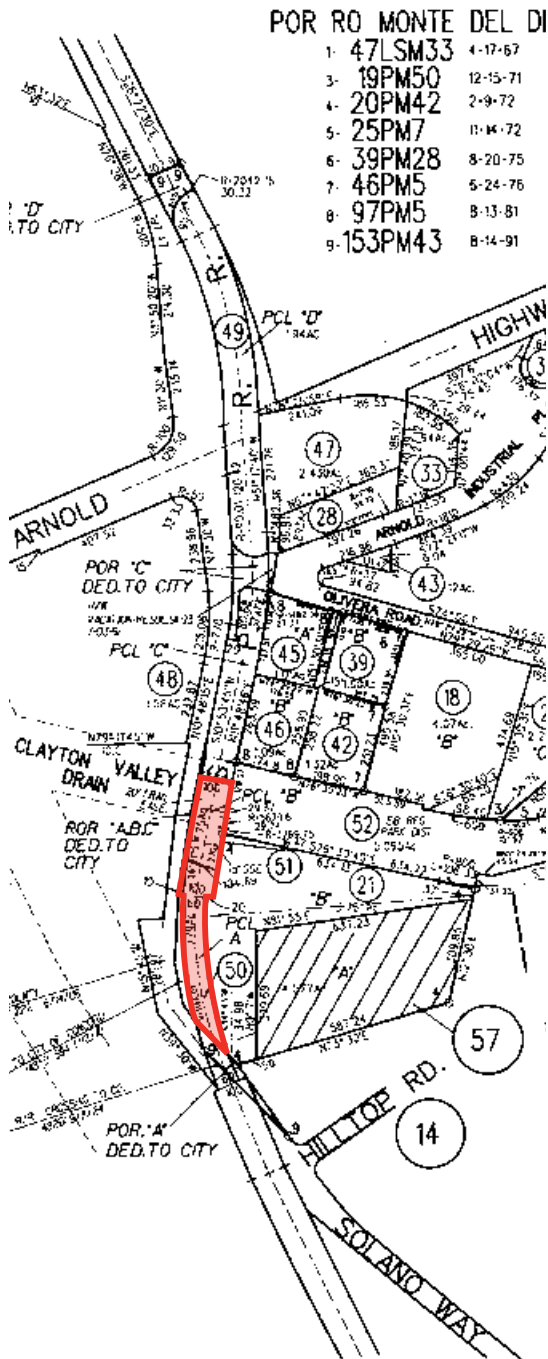
CURT D. SCHEVE SIOR
925 279 5593
curt.scheve@colliers.com
CA Lic. 00916122

BILL HILLIS SIOR
925 279 5578
bill.hillis@colliers.com
CA Lic. 01262007

COLLIERS INTERNATIONAL
1850 Mt Diablo Boulevard, Suite 200
Walnut Creek, California 94596
colliers.com/walnutcreek

FOR SALE > 1.349 ACRES IN CONCORD, CA

CONCORD INDUSTRIAL LAND



CONTACT INFORMATION



CURT D. SCHEVE SIOR
925 279 5593
curt.scheve@colliers.com
CA Lic. 00916122

BILL HILLIS SIOR
925 279 5578
bill.hillis@colliers.com
CA Lic. 01262007

COLLIERS INTERNATIONAL
1850 Mt Diablo Boulevard, Suite 200
Walnut Creek, California 94596
colliers.com/walnutcreek