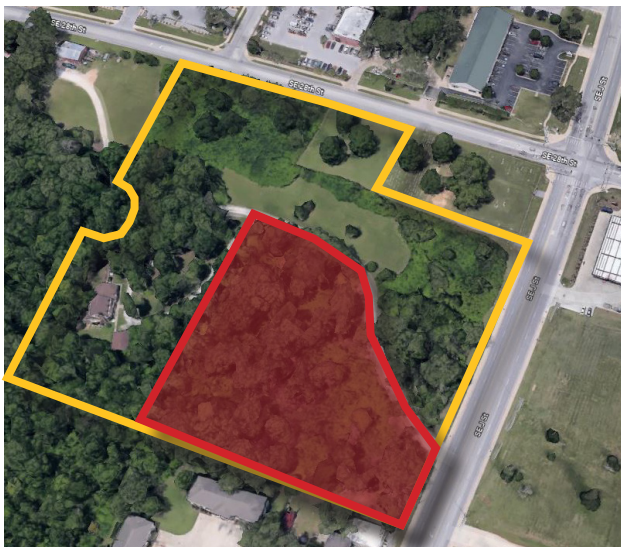


Land For Sale



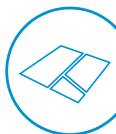
SE J Street, Bentonville | AR

2.36 +/- acres of land for sale with J Street frontage located off of 28th & J Street in Bentonville. Less than 2.0 miles from the new Walmart Global Headquarters and 8th Street expansion. Great development potential in a great location.



\$720,000
(\$7.00 PSF)

FEATURES



Additional 5.49 acres available, totaling 7.85



Less than 2.0 miles to the new Walmart Global HQ



Utilities on site, leveled and curbed

Contact us:

Pat Morrison

Brokerage | Arkansas

D: +1 479 845 1503

C: +1 479 936 4200

pat.morrison@colliers.com



Colliers International

4204 S. Pinnacle Hills Pkwy | Suite 102

Rogers, AR 72758






P: +1 479 845 6000

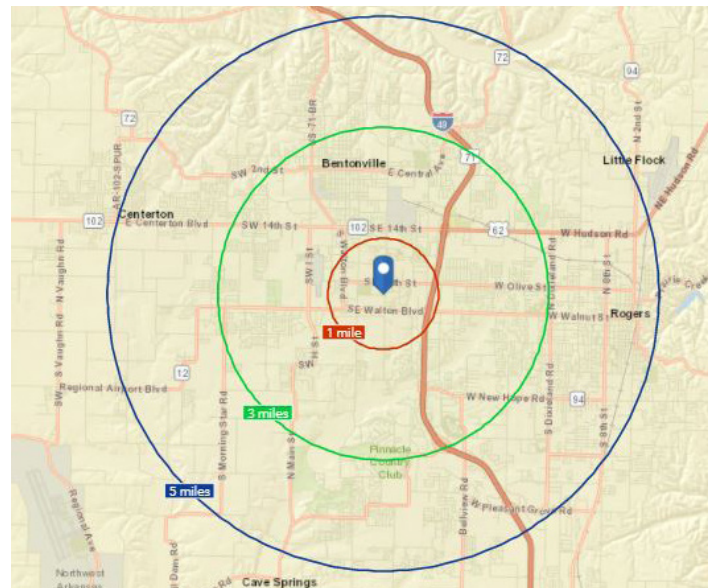
www.colliers.com/arkansas

This document has been prepared by Colliers International for advertising and general information only. Colliers International makes no guarantees, representations or warranties of any kind, expressed or implied, regarding the information including, but not limited to, warranties of content, accuracy and reliability. Any interested party should undertake their own inquiries as to the accuracy of the information. Colliers International excludes unequivocally all inferred or implied terms, conditions and warranties arising out of this document and excludes all liability for loss and damages arising there from. This publication is the copyrighted property of Colliers International and/or its licensor(s). ©2017. All rights reserved.



Area Demographics

	1 Mile	3 Mile	5 Mile
 Population (2017)	3,408	45,443	104,268
 Projected Population (2022)	3,733	50,851	117,666
 Average Household Income (2017)	\$70,316	\$82,109	\$86,136
 Proj. Average Household Income (2022)	\$80,973	\$92,906	\$97,025
 Households (2017)	1,546	17,783	38,433



Contact us:

Pat Morrison

Brokerage | Arkansas

D: +1 479 845 1503

C: +1 479 936 4200

pat.morrison@colliers.com

Colliers International

4204 S. Pinnacle Hills Pkwy | Suite 102

Rogers, AR 72758

P: +1 479 845 6000

www.colliers.com/arkansas

