

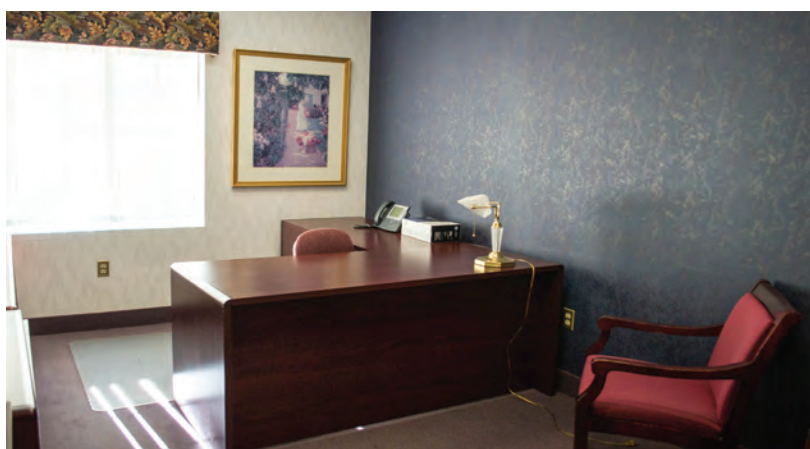
FOR SALE > OFFICE SPACE

935 Main Street, Unit D-1

MANCHESTER, CT 06040



2,046 SF OFFICE CONDO LOCATED IN THE REAR OF THE BUILDING



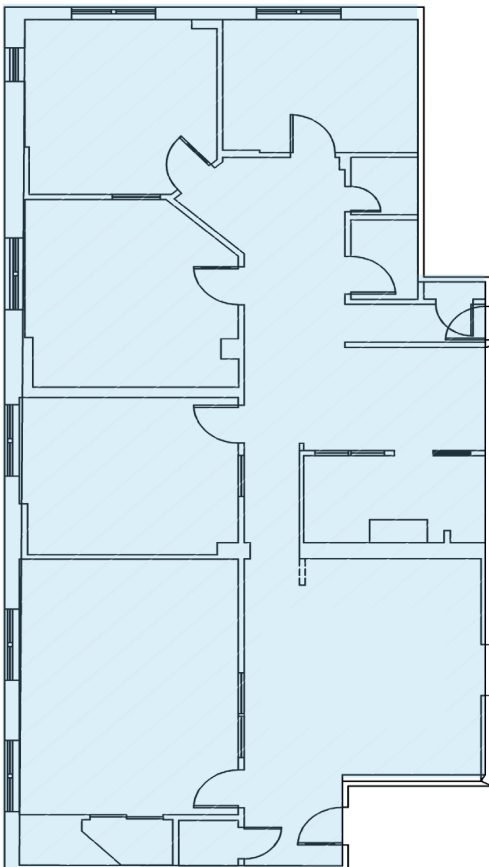
Unit D-1 is a 2,046 square foot professional office condominium sold as-is. The furniture may be part of the sale. This condo is located on Level E in the rear of the building.

VIEW ONLINE: www.colliers.com/hartford

FOR SALE > Unit D-1 Level E

| | |
|-------------|--|
| Address: | 935 Main Street, Manchester, CT 06040 |
| Total SF: | 2,046 |
| Level: | E |
| Year Built: | 1921 |
| HVAC/Heat: | Central A/C & Gas-Forced Air Heat |
| Sprinklers: | Yes; Wet system |
| Zoning: | CBD |
| Parking: | Ample parking; Adjacent to public parking lot |
| Directions: | From Hartford, take I-84 East to Exit 59 for I-384 East. Take Exit 3 and merge onto CT-83 N/Main Street. The property is on the right. |
| Sale Price: | \$120,700 |

FLOOR PLAN > Unit D-1 Level E



> Contact Us

BOB PAGANI, SIOR

860 616 4024 Direct

860 983 3949 Cell

bob.pagani@colliers.com

RICH ABO

860 616 4011 Direct

860 712 8605 Cell

rich.abo@colliers.com

