

The Piazza

Beautiful and practical for business.



8050 - 8080 SANTA TERESA BOULEVARD • GILROY, CALIFORNIA 95020

The Piazza is a Class-A Business Complex, Centrally Located in Gilroy, CA and offers 52,000 Sq. Ft. of High-End Mixed Use Space.

- Gilroy's Most Prestigious Office Park
- Great West Side Location
- Fabulous Mediterranean Architecture
- Great Tenant Mix (Law, Real Estate, Insurance, etc.)
- Spaces Available from 732 Sq. Ft. to 2,027 Sq. Ft.
- Built in 2002
- Four Buildings with Dramatic Courtyard and Fountain
- Additional TI's Available

V
VANNI PROPERTIES INC.



For More Information, Contact Exclusive Agents:

Mark Sanchez

+1 408 842 7000

mark.sanchez@colliers.com

CA License No. 00883278

Jeff Barnes

+1 408 842 7000

jeff.barnes@colliers.com

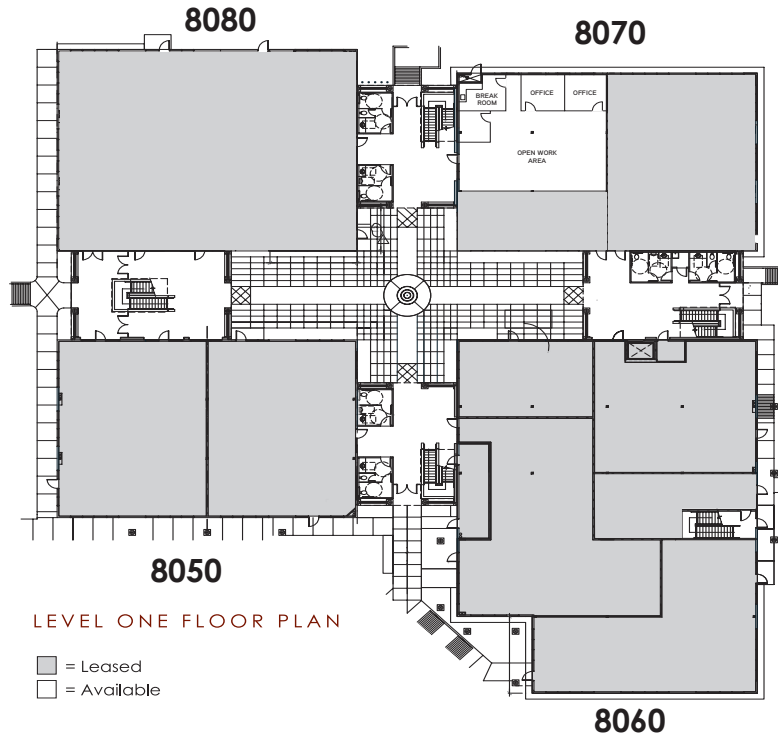
CA License No. 00883278

8070 Santa Teresa Boulevard, Suite 220 • Gilroy, CA 95020 • +1 408 842 7000 Main • +1 408 842 1141 Fax

The Piazza

Beautiful and practical for business.

8050 - 8080 SANTA TERESA BOULEVARD • GILROY, CALIFORNIA 95020



Level One Availables

\$1.75 Per Sq. Ft./Month, NNN

8070 Santa Teresa Boulevard

- **Suite 110** - 2,027 Square Feet
 - Open Work Area
 - Two Private Offices
 - Lunchroom

Level Two Availables

\$1.65 Per Sq. Ft./Month, NNN

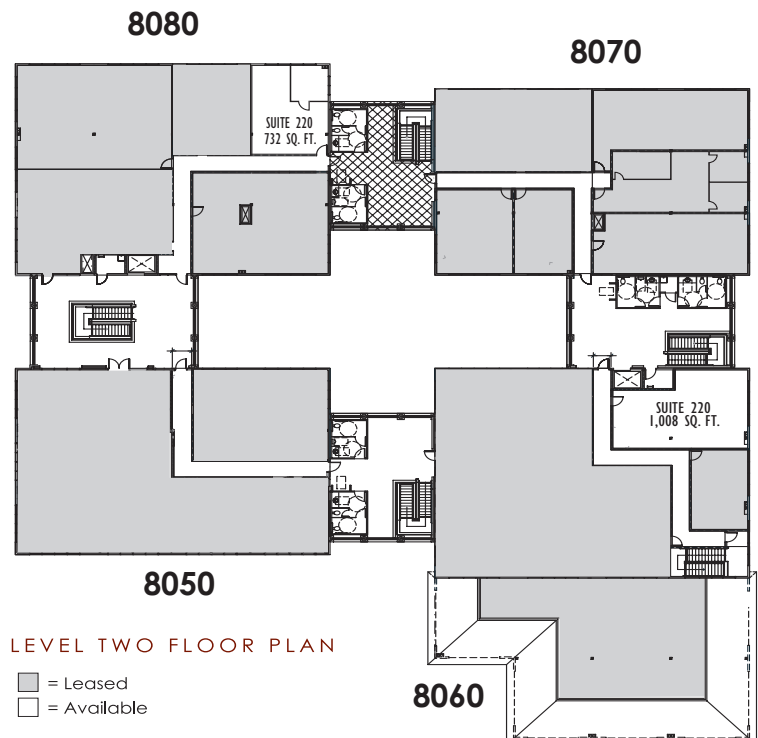
8060 Santa Teresa Boulevard

- **Suite 220** - 1,008 Square Feet
 - Open Space

8080 Santa Teresa Boulevard

- **Suite 220** - 732 Square Feet
 - One Private Office

* All Sizes Include Approximately 10.9% Load Factor



Drawings Not Exact/Not to Scale

The information furnished has been obtained from sources we deem reliable and is submitted subject to errors, omissions and changes. Although Colliers International has no reason to doubt its accuracy, we do not guarantee it. All information should be verified by the recipient prior to lease, purchase, exchange, or execution of legal documents. © 2016 Colliers International