

FOR SALE > LAND

3.9 ACRES NEXT TO THE PRESERVES

ECORSE ROAD | ROMULUS, MI



TWO MILES TO DETROIT METROPOLITAN AIRPORT

> PROPERTY HIGHLIGHTS

- 3.9 Acres Vacant Land For Sale at \$165,000.00
- Lot Dimensions 133 x 1,277
- Less Than a Mile to I-94
- Water and Electric Onsite
- Zoned RC – Regional Center Which Allows For Hotels, Restaurants, Multi-Family, Car Rental and Parking Facilities

COLLIERS INTERNATIONAL
2 Corporate Drive | Suite 300
Southfield, Michigan 48076

For More Information Call:

SHERIDAN BURTON
PHONE 248 540 1000 EXT 1852
sheridan.burton@colliers.com



colliers.com/detroit



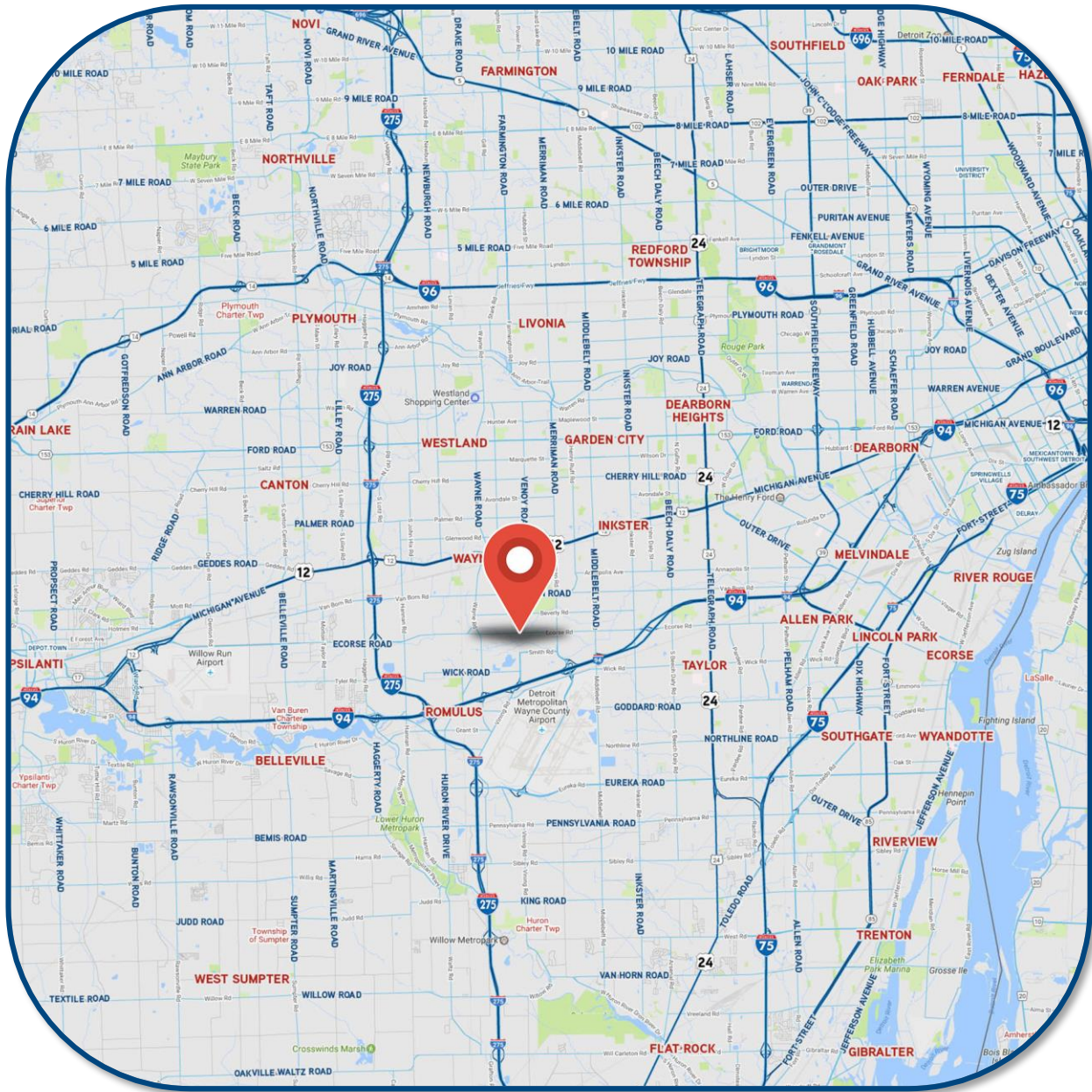
FOR SALE > LAND

3.9 ACRES NEXT TO THE PRESERVES



ECORSE ROAD | ROMULUS, MI

> LOCATION MAP



SHERIDAN BURTON
PHONE 248 540 1000 EXT 1852
sheridan.burton@colliers.com



COLLIERS INTERNATIONAL
2 Corporate Dr. | Suite 300
Southfield, Michigan 48076

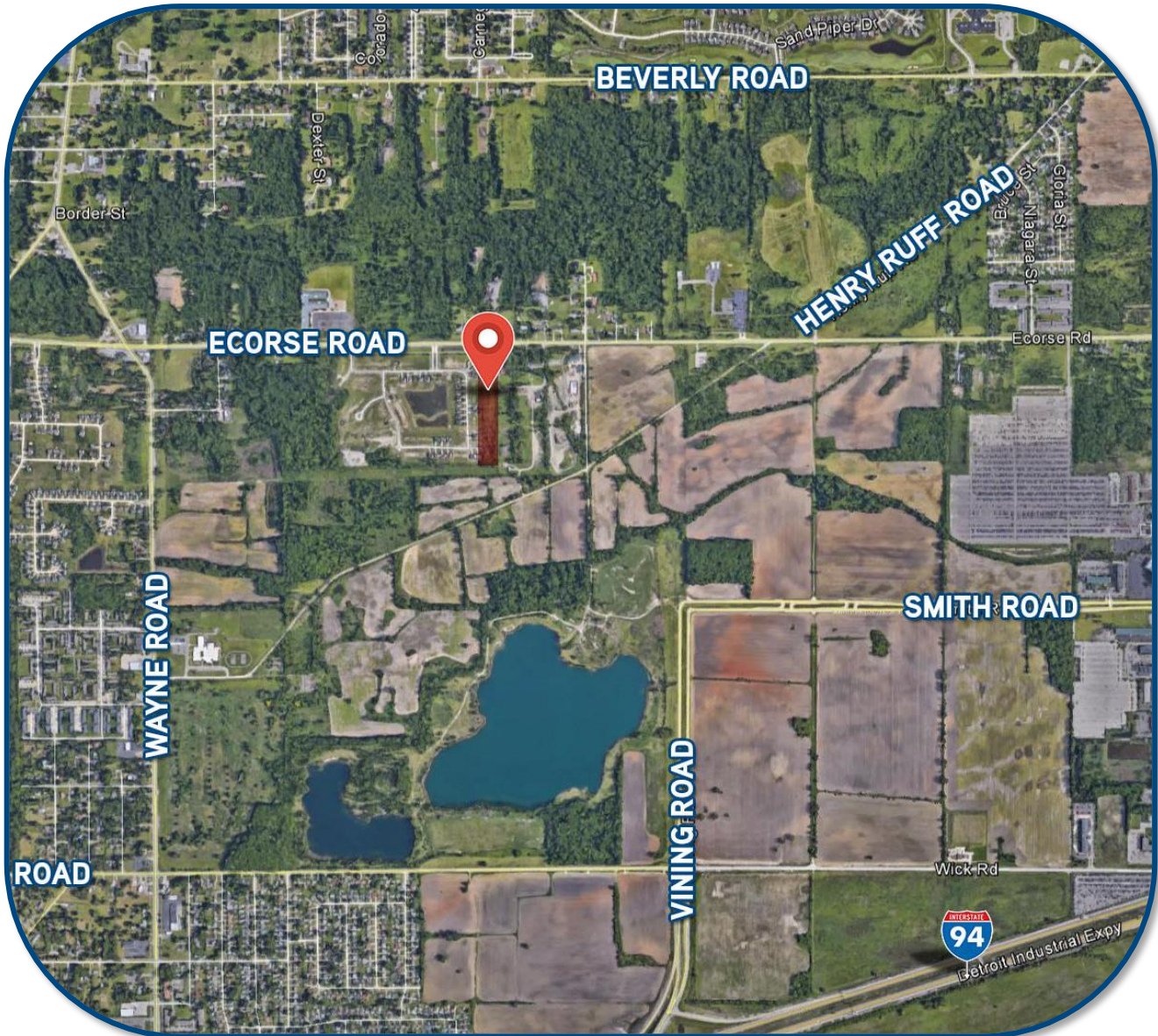
FOR SALE > LAND

3.9 ACRES NEXT TO THE PRESERVES



ECORSE ROAD | ROMULUS, MI

> AERIAL MAP



SHERIDAN BURTON
PHONE 248 540 1000 EXT 1852
sheridan.burton@colliers.com



COLLIERS INTERNATIONAL
2 Corporate Dr. | Suite 300
Southfield, Michigan 48076

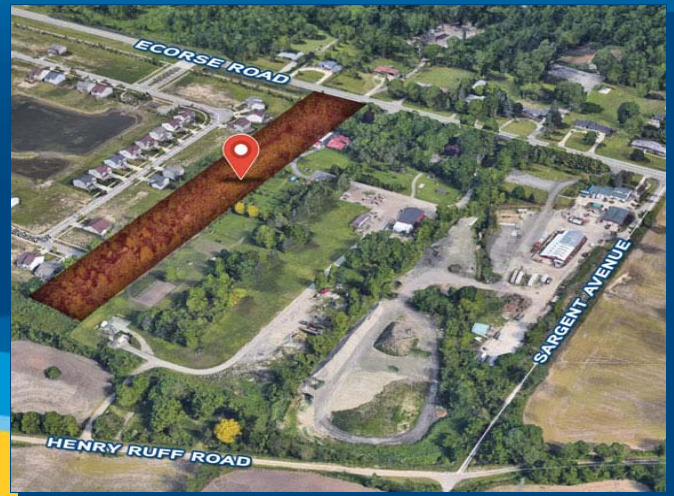
Land Availability

For Sale

3.9 Acres Next To The Preserves

Ecorse Road

Romulus, MI 48174

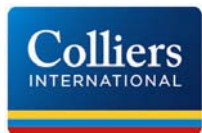


Sale Price: \$165,000 Cash
Sale Price /Acre: \$42,307
Sale Price /SF:
Acreage- Min.: 3.90
Acreage- Max.: 3.90
Dimensions: 133 x 1,277
Zoning: RC-Regional Center
Possible Use: Many
Utilities: Water and Electric
Property Taxes: \$1,979 (2016)

County: Wayne
Crossroads: SE Corner at Sargent Avenue
Parcel #: 80-033-99-0010-000

- 3.9 Acres Vacant Land
- Lot Dimensions 133 x 1,277
- Less Than a Mile to I-94
- Water and Electric Onsite
- Zoned RC – Regional Center Which Allows For Hotels, Restaurants, Multi-Family, Car Rental and Parking Facilities

For more information, contact:



(734) 540-1000

7345401000@colliers.com

(248) 540-1000

2 Corporate Drive, Suite 300
Southfield, MI 48076
248 540 1000

400 E. Washington St.
Ann Arbor, MI 48104
734 994 3100

www.colliers.com