

# 6 TO 16.90 ACRES LAND MARKETING PACKAGE

NEC SCHOOLCRAFT & HAGGERTY  
PLYMOUTH, MICHIGAN



**BRENT BESHEARS**

Senior Vice President

248 540 1000 | Ext. 1686

[brent.beshears@colliers.com](mailto:brent.beshears@colliers.com)



2 Corporate Drive

Southfield, Michigan

[colliers.com/detroit](http://colliers.com/detroit)

# TABLE OF CONTENTS

## SUMMARY

Page 3

## PROPERTY AERIAL SUMMARY

Page 4

## PROPERTY AERIAL

Page 5

## PROPERTY MAPS

Page 6

## SITE PLAN

Page 7

## PLAT MAP

Page 8

## DEMOGRAPHICS

Page 9



# SUMMARY

**Location:** NEC Schoolcraft & Haggerty  
Plymouth, MI 48170

**Total Land Size:** 16.90 Acres

**Total Size Available:** 6 to 16.90 Acres

**Sale Price:** \$895,000 for The Six Acres and \$2,280,000 for The 16.90 Acres

<u>Parcel Acres</u>	<u>Asking Price</u>
A. 7.7 Acres	\$850,000.00
B. .75 Acres (ext.)	\$150,000.00
C. 1.10 Acres	\$250,000.00
D. 1.35 Acres	\$135,000.00 M-DOT
E. <u>6.00 Acres</u>	<u>\$895,000.00</u>
16.90 Acres	\$2,280,000.00

**Price Per Acre:** \$137,184.00

**Total Taxes:** \$4,600.00 for the Six Acres and  
\$23,490.18 for the Remaining Parcels  
\$28,090.18 Total Taxes

**Zoning:** OST: Office Service Technology District

**Utilities:** Municipal Water/Sewer

**Demographics within  
A 5 Mile Radius:**

**Population:** 204,078 people  
**Employment:** 146,603 employees  
**Households:** 86,520 households  
**Avg. Household Income:** \$90,885 annually

**Comments:** 6.0 acres of land are available for sale at the NEC of Schoolcraft and Haggerty. This site is zoned OST: Office Service Technology and provides excellent exposure to M-14. Up to 16.90 Acres of land can be assembled and multiple uses are permitted.





# PROPERTY AERIAL SUMMARY



## Parcel Acres

A. 7.7 Acres

B. .75 Acres (ext.)

C. 1.10 Acres

D. 1.35 Acres

E. 6.00 Acres

16.90 Acres

## Asking Price

\$850,000.00

\$150,000.00

\$250,000.00

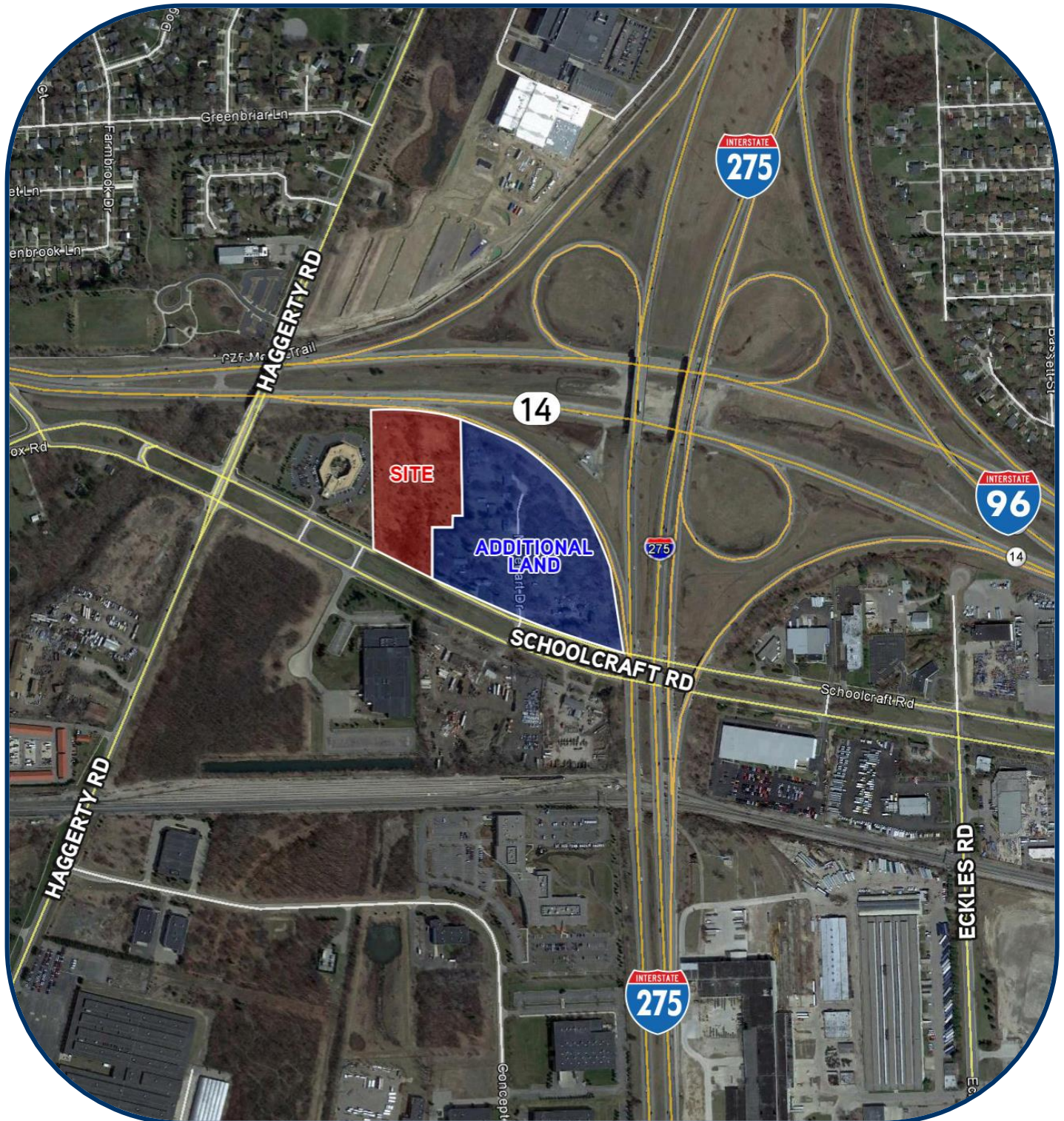
\$135,000.00 M-DOT

\$895,000.00

\$2,280,000.00

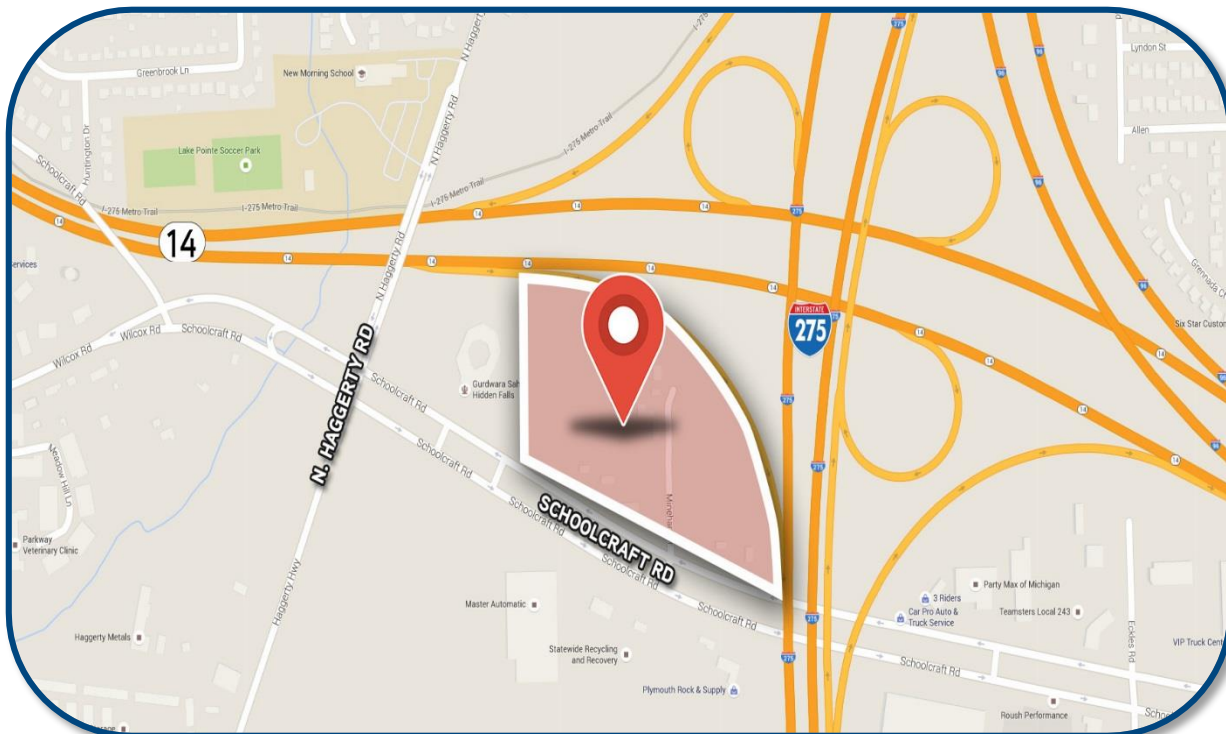
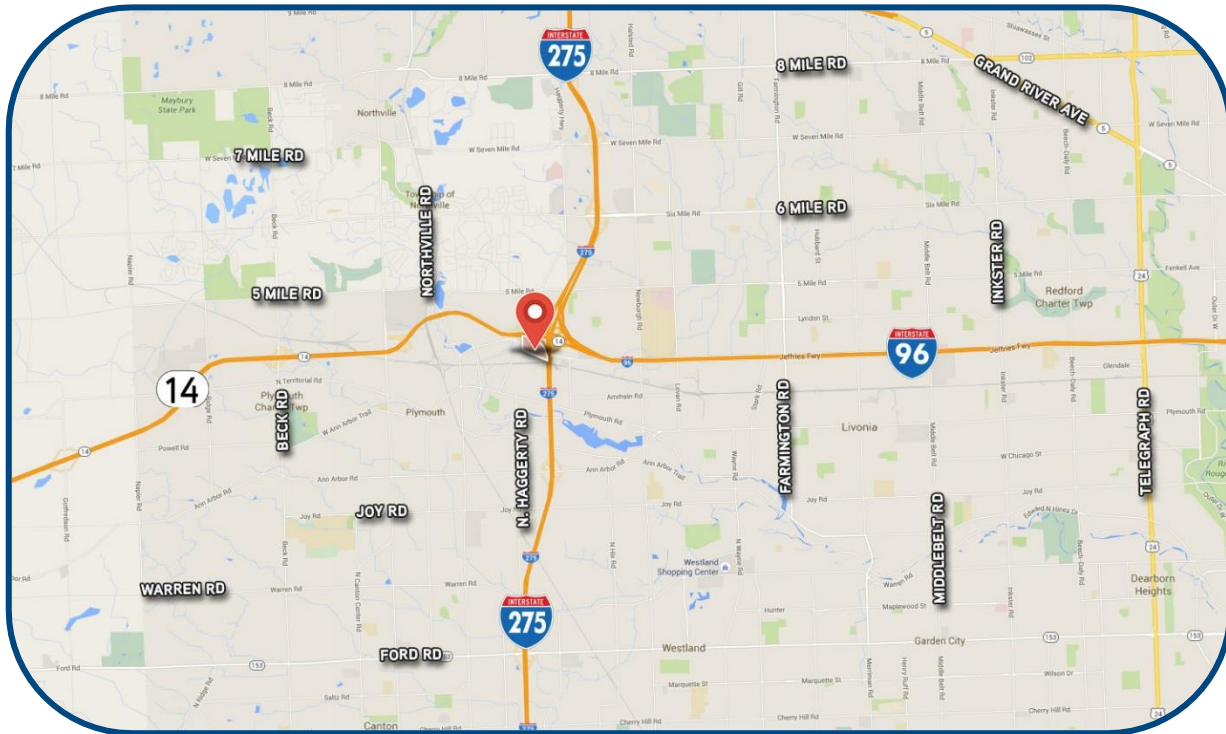


# PROPERTY AERIAL



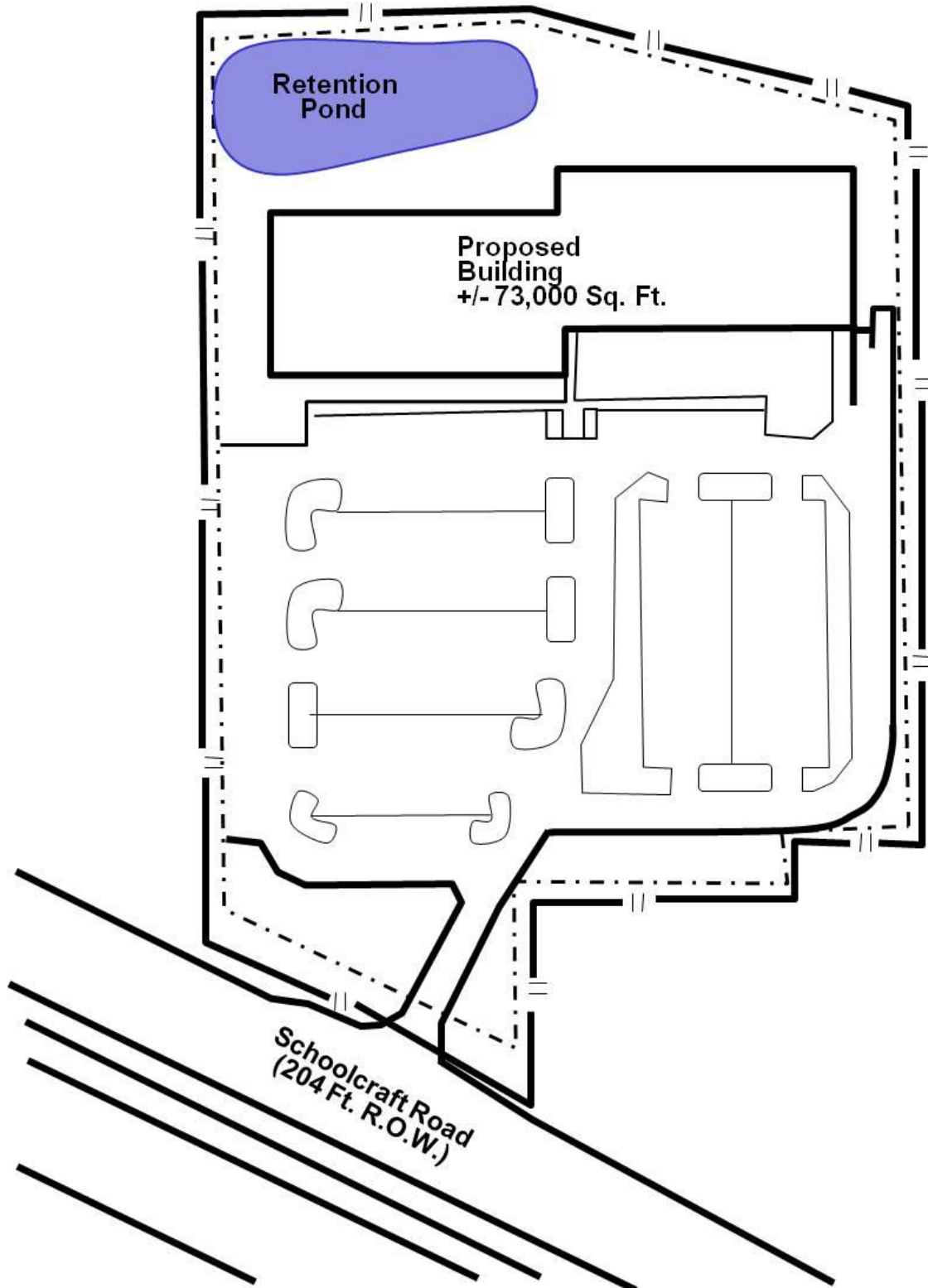


# PROPERTY MAPS

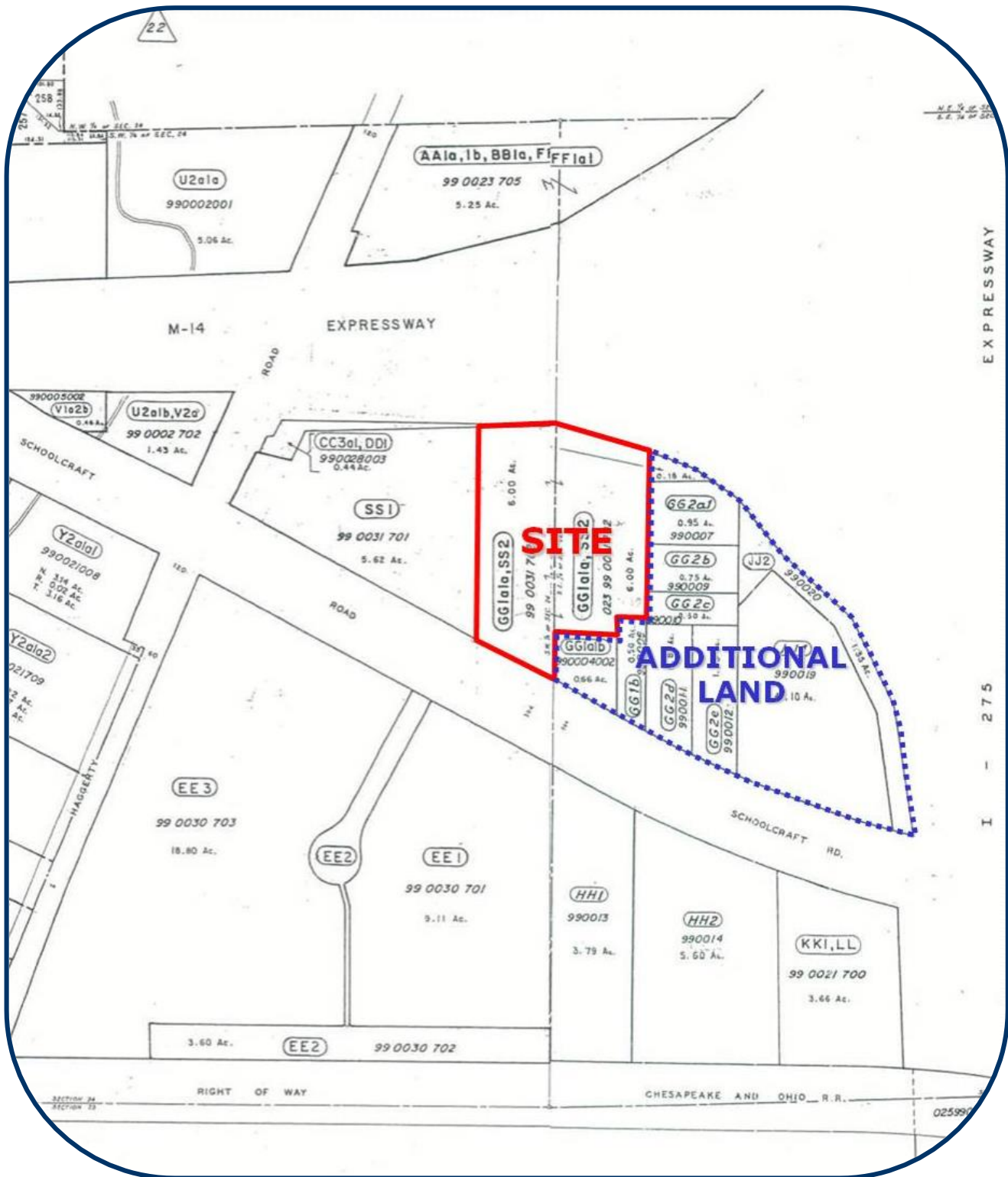


# SITE PLAN

## 6 ACRE PARCEL



# PLAT MAP



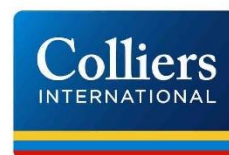


# DEMOGRAPHICS

## SUMMARY PROFILE

2000-2010 Census, 2014 Estimates with 2019 Projections

Calculated using Proportional Block Groups



Lat/Lon: 42.3851/-83.4411

RS1

40350 Schoolcraft Rd		1 mi radius	3 mi radius	5 mi radius
Plymouth, MI 48170				
POPULATION	2014 Estimated Population	6,325	69,816	204,078
	2019 Projected Population	6,328	69,851	204,430
	2010 Census Population	6,292	69,484	203,113
	2000 Census Population	6,673	71,143	201,650
	Projected Annual Growth 2014 to 2019	-	-	-
	Historical Annual Growth 2000 to 2014	-0.4%	-0.1%	0.1%
	2014 Median Age	44.7	43.4	42.2
HOUSEHOLDS	2014 Estimated Households	2,901	30,214	86,520
	2019 Projected Households	2,947	30,705	88,027
	2010 Census Households	2,825	29,432	84,287
	2000 Census Households	2,854	28,486	80,780
	Projected Annual Growth 2014 to 2019	0.3%	0.3%	0.3%
	Historical Annual Growth 2000 to 2014	0.1%	0.4%	0.5%
RACE AND ETHNICITY	2014 Estimated White	93.9%	89.7%	84.4%
	2014 Estimated Black or African American	2.1%	4.6%	7.6%
	2014 Estimated Asian or Pacific Islander	2.2%	3.7%	5.5%
	2014 Estimated American Indian or Native Alaskan	0.3%	0.2%	0.2%
	2014 Estimated Other Races	1.4%	1.8%	2.2%
	2014 Estimated Hispanic	2.5%	2.3%	2.7%
INCOME	2014 Estimated Average Household Income	\$74,281	\$89,585	\$90,885
	2014 Estimated Median Household Income	\$60,194	\$72,561	\$72,926
	2014 Estimated Per Capita Income	\$34,091	\$38,843	\$38,586
EDUCATION (AGE 25+)	2014 Estimated Elementary (Grade Level 0 to 8)	2.2%	2.0%	2.1%
	2014 Estimated Some High School (Grade Level 9 to 11)	4.3%	4.1%	4.5%
	2014 Estimated High School Graduate	23.3%	22.3%	22.4%
	2014 Estimated Some College	21.0%	22.1%	22.0%
	2014 Estimated Associates Degree Only	9.1%	8.3%	8.0%
	2014 Estimated Bachelors Degree Only	26.7%	25.7%	25.2%
	2014 Estimated Graduate Degree	13.4%	15.5%	15.9%
BUSINESS	2014 Estimated Total Businesses	325	4,542	10,763
	2014 Estimated Total Employees	5,970	65,739	146,603
	2014 Estimated Employee Population per Business	18.4	14.5	13.6
	2014 Estimated Residential Population per Business	19.5	15.4	19.0

