

RETAIL/OFFICE SPACE FOR LEASE

The Andrews Building
55-63 East Center Street, Manchester, CT



Prime Location in Central Manchester

55-63 East Center Street is a 24,600 SF office building with a prime location in Central Manchester. It is within close proximity to many local amenities including a hospital, banks, shopping and restaurants. The building is ADA compliant.

Available SF

- > 2,161 SF retail or office space on the first floor

Parking

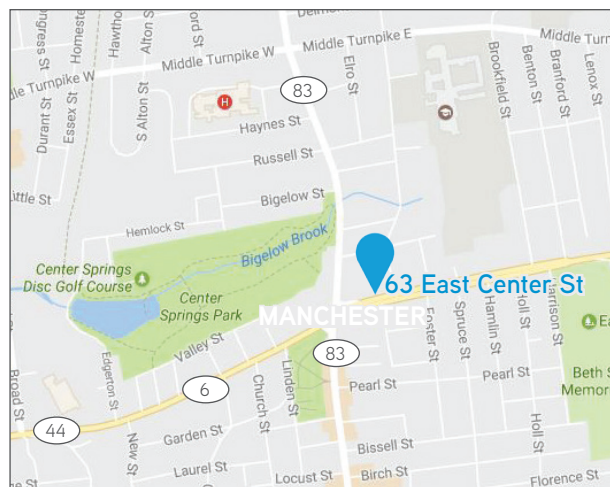
- > 105 spaces; 4/1,000
- > Designated and on-street parking available with rear parking area to accommodate tenants

Lot Size

- > 1.13 acres

Lease Rate

- > \$16.00/SF + Utilities



Demographics

	Pop.	HH	Avg HH \$
1 Mile	17,513	7,391	\$64,083
3 Miles	59,831	25,375	\$85,009
5 Miles	120,644	49,241	\$96,052

TRAFFIC COUNT

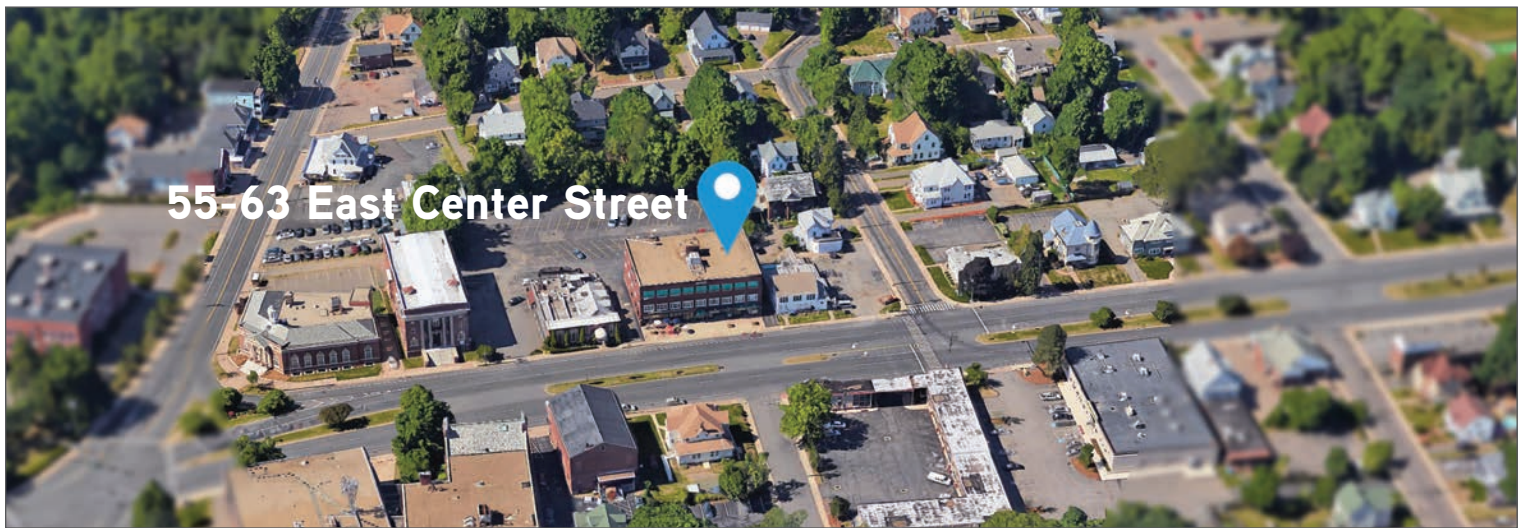
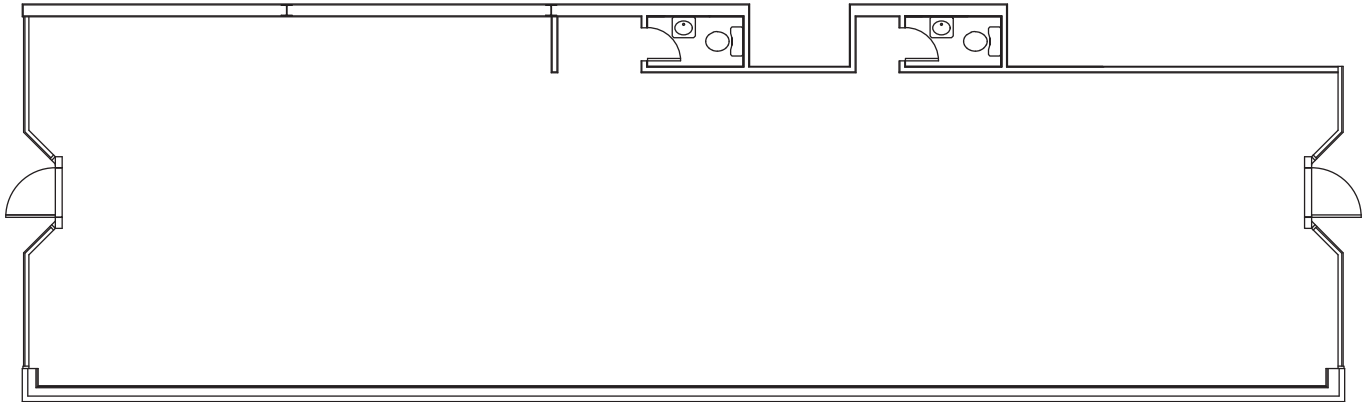
E. Center Street & Madison Street 15,300 VPD

RETAIL/OFFICE SPACE FOR LEASE

The Andrews Building
55-63 East Center Street, Manchester, CT



2,161 RSF ON THE FIRST FLOOR



Contact Us

BOB PAGANI, SIOR
860 616 4024 DIRECT
860 983 3949 CELL
bob.pagani@colliers.com

RICH ABO
860 616 4011 DIRECT
860 712 8605 CELL
rich.abo@colliers.com

COLLIERS INTERNATIONAL
864 Wethersfield Avenue
Hartford CT 06114
860 249 6521 Main
www.colliers.com/hartford