

# OFFICE SPACE FOR LEASE

The Andrews Building

55-63 East Center Street, Manchester, CT



## Prime Location in Central Manchester

55-63 East Center Street is a 24,600 SF office building with a prime location in Central Manchester. It is within close proximity to many local amenities including a hospital, banks, shopping and restaurants. The building is ADA compliant.

## Available SF

- › 2,356 SF (63 East Center Street) on the second floor

## Parking

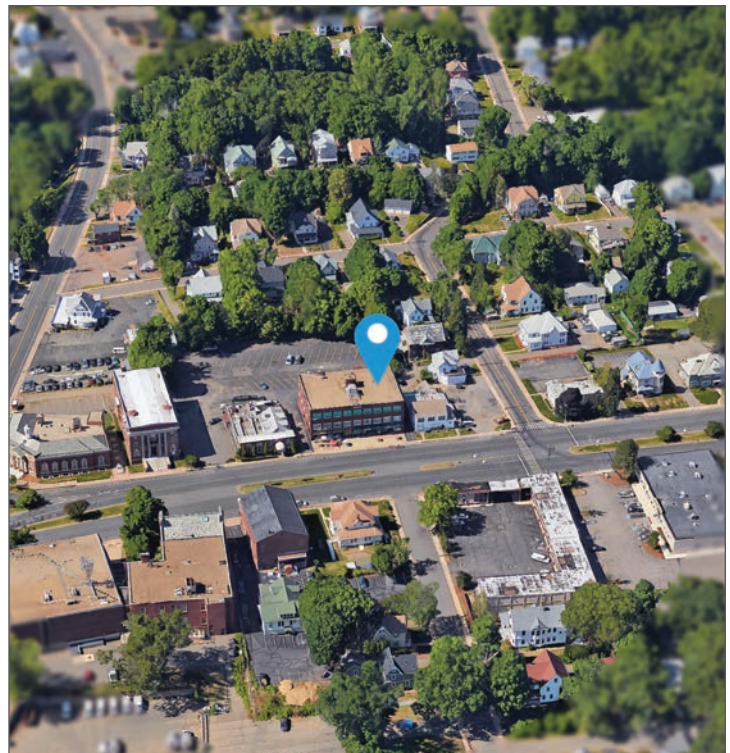
- › 105 spaces; 4/1,000
- › Designated and on-street parking available with rear parking area to accommodate tenants

## Lot Size

- › 1.13 acres

## Lease Rate

- › \$16.00/SF + Utilities



55-63 East Center Street, Manchester, CT

