

FOR SALE > LAND

337 Berlin Turnpike

BERLIN, CT 06037



337 Berlin Turnpike > Land

337 Berlin Turnpike, a +/-12 acre ground up shopping site in Berlin, CT. Impressive traffic counts & located at a four way, signalized intersection. Ideally located, this site has visibility on Berlin Turnpike, easy access to Route 5 and Route 15 and is only 15 miles from Bradley International Airport.

Land Amenities

- > Approximately 12+/- acre site
- > BT-2 & PI Zoning
- > Excellent opportunity for broad trade customers
- > 4-way signalized intersection
- > Enables customers to access site easily from all directions
- > Excellent visibility on Berlin Turnpike
- > **Sale Price: \$4,900,000**

Directions

From Hartford, take I-91 South toward New Haven. At Exit 28, take ramp right for CT-15 South. Arrive at 337 Berlin Turnpike.

Demographics

2016	Pop.	HH	Avg HH \$
1 Mile	2,393	1,036	\$78,480
3 Miles	56,709	22,677	\$73,264
5 Miles	162,308	65,253	\$75,485
10 Miles	582,428	234,217	\$75,489

Area Retail

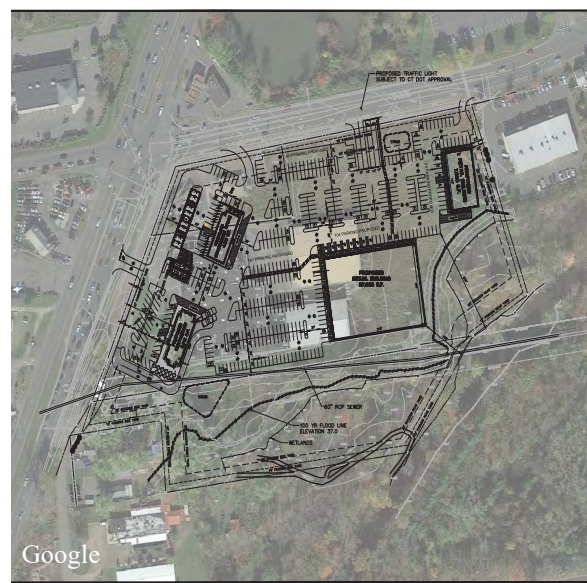
Home Depot, Kohl's, Michael's, CVS, LA Fitness, Stew Leonard's, Sam's Club, PC Richards, Lowe's, Target, Stop & Shop, Rave, Dick's, Price Chopper, Walmart

Traffic Counts 28,400 VPD 31,000 VPD on Berlin Tnpk.

NICHOLAS R. MORIZIO, CRE, SIOR
860 616 4022
HARTFORD, CT
nicholas.morizio@colliers.com

COLLIERS INTERNATIONAL
864 Wethersfield Avenue
Hartford, CT 06114
www.colliers.com/hartford

337 Berlin Turnpike > Site Plan



Contact Us

NICHOLAS R. MORIZIO, CRE, SIOR

860 616 4022

HARTFORD, CT

nicholas.morizio@colliers.com

COLLIERS INTERNATIONAL

864 Wethersfield Avenue

Hartford, CT 06114

860 249 6521 Main

860 247 4067 Fax

www.colliers.com/hartford

Information contained herein has been obtained from the owners or from other sources deemed reliable. We have no reason to doubt its accuracy but regret we cannot guarantee it. All properties subject to change or withdrawal without notice.

