

# FOR LEASE > RETAIL SPACE BROADVIEW COMMONS

9200 Broadview Road, Broadview Heights, Ohio

**Colliers**  
INTERNATIONAL



## PROPERTY HIGHLIGHTS

- > Located on the northwest corner of Broadview Road & Rt. 82
- > Abundant, secure, lighted parking
- > Local merchants: University Hospital, Catan's Fashions, Cozumel Restaurant, Huntington Bank, Citizens Bank, D'Agnese's Restaurant, Antonio's Pizza, Pucher's Decorating Center
- > Less than a mile from the brand new, state of the art MetroHealth Brecksville Health and Surgery Center, Cleveland Clinic and University Hospitals
- > Immediate access to RTA transportation line
- > Suite B-10: 970 SF Retail  
Suite B-20: 2,078 SF Retail  
Suite B-110: 2,387 SF Retail  
Suite C-20: 1,203 SF Retail  
Suite C-30/40: 3,258 SF Retail  
Possible Outlot 2 and 3. Vacant Land



DEMOGRAPHICS	1 mile	3 mile	5 mile
Estimated Population	4,795	40,938	99,845
Total Daytime Employees	1,599	12,974	44,023
Average Household Income	\$102,075	\$113,328	\$105,196

MARK S. ABOOD ESQ.  
+1 216 239 5121  
mark.abood@colliers.com

PETER GREALIS  
+1 216 239 5118  
peter.grealis@colliers.com

COLLIERS INTERNATIONAL  
200 Public Square | Suite 1200  
Cleveland, OH 44114  
www.colliers.com/ohio



# SITE AERIAL

Colliers  
INTERNATIONAL



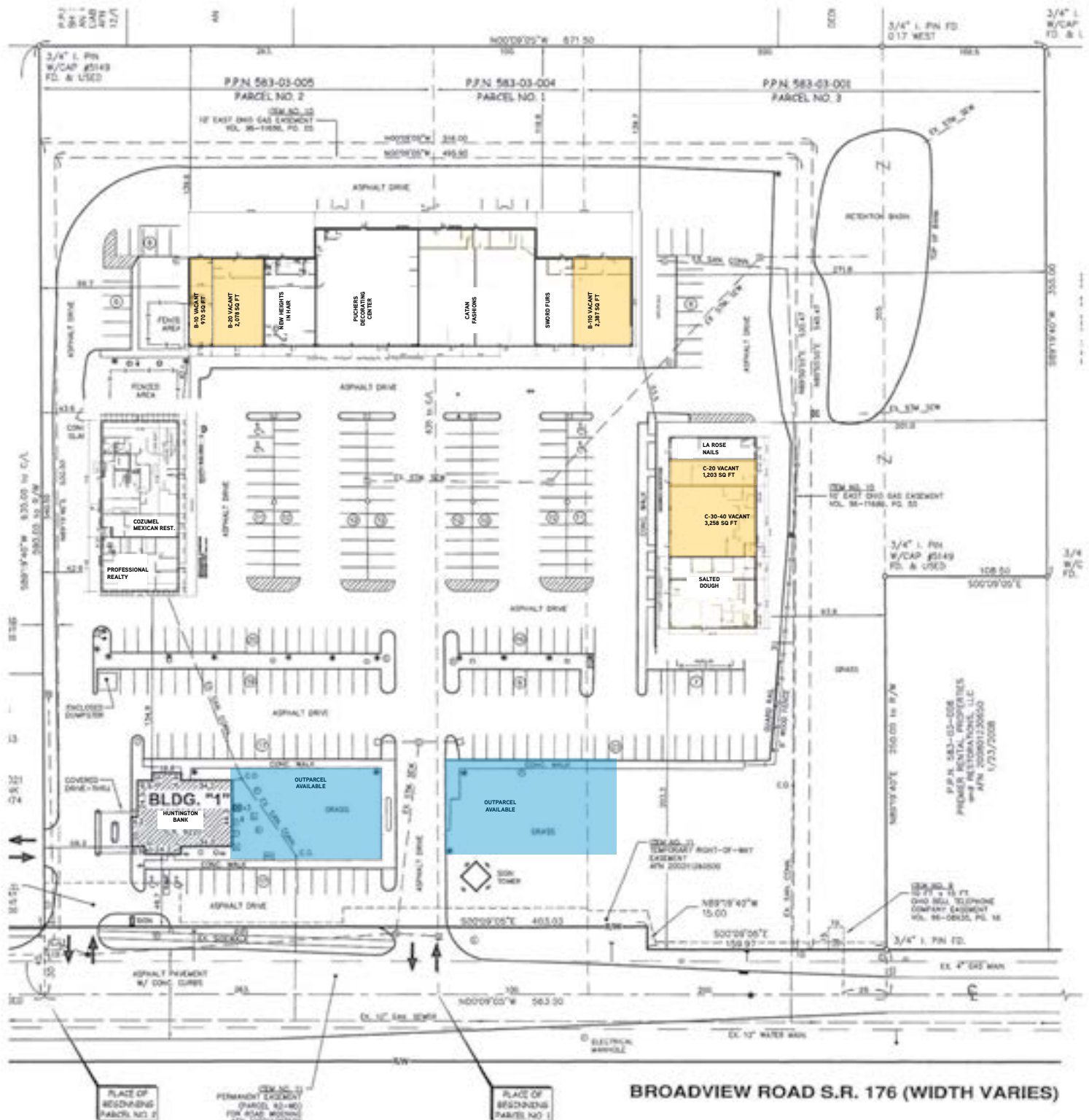
MARK S. ABOOD ESQ.  
+1 216 239 5121  
mark.abood@colliers.com

PETER GREALIS  
+1 216 239 5118  
peter.grealis@colliers.com

COLLIERS INTERNATIONAL  
200 Public Square | Suite 1200  
Cleveland, OH 44114  
www.colliers.com/ohio

# SITE PLAN

**Colliers**  
INTERNATIONAL



MARK S. ABOOD ESQ.  
+1 216 239 5121  
mark.abood@colliers.com

PETER GREALIS  
+1 216 239 5118  
peter.grealis@colliers.com

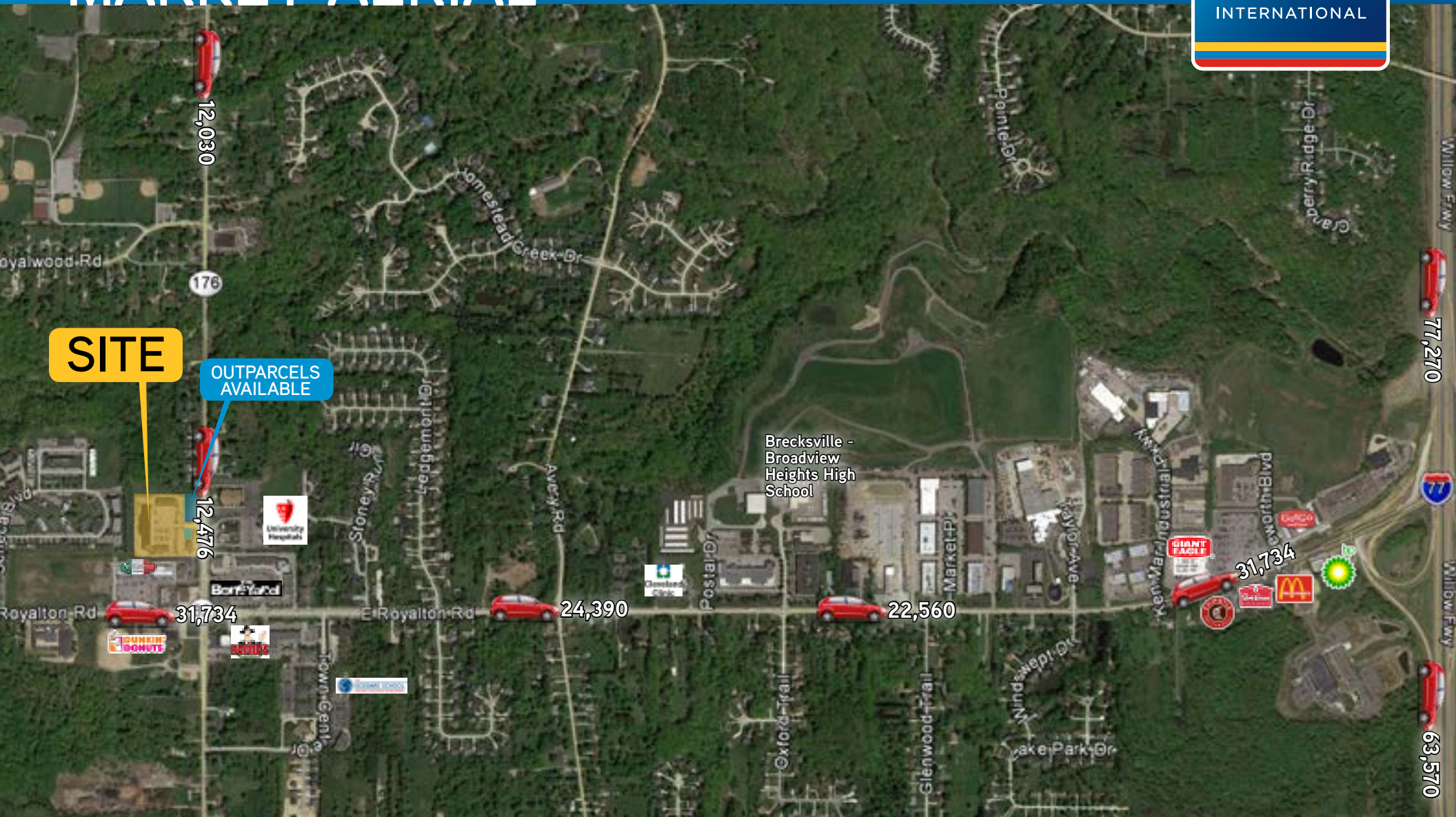
COLLIERS INTERNATIONAL  
200 Public Square | Suite 1200  
Cleveland, OH 44114  
www.colliers.com/ohio

The information contained herein was obtained from sources believed reliable; however, Colliers International makes no guarantees, warranties, or representations as to the completeness or accuracy thereof. The presentation of this property is submitted subject to errors, omissions, change of price or conditions prior to sale or lease, or withdrawal without notice.



# MARKET AERIAL

Colliers  
INTERNATIONAL



MARK S. ABOOD ESQ.  
+1 216 239 5121  
mark.abood@colliers.com

PETER GREALIS  
+1 216 239 5118  
peter.grealis@colliers.com

COLLIERS INTERNATIONAL  
200 Public Square | Suite 1200  
Cleveland, OH 44114  
www.colliers.com/ohio

# DEMOGRAPHIC REPORT

9200 Broadview Rd		1 mi radius	3 mi radius	5 mi radius
Cleveland, OH 44147				
POPULATION	2018 Estimated Population	4,795	40,938	99,845
	2023 Projected Population	4,503	39,590	96,687
	2010 Census Population	4,761	41,380	100,948
	2000 Census Population	4,327	37,804	96,503
	Projected Annual Growth 2018 to 2023	-1.2%	-0.7%	-0.6%
	Historical Annual Growth 2000 to 2018	0.6%	0.5%	0.2%
	2018 Median Age	37.7	43.3	44.7
HOUSEHOLDS	2018 Estimated Households	2,032	16,757	42,219
	2023 Projected Households	1,950	16,509	41,649
	2010 Census Households	1,945	16,304	41,114
	2000 Census Households	1,857	14,296	37,341
	Projected Annual Growth 2018 to 2023	-0.8%	-0.3%	-0.3%
	Historical Annual Growth 2000 to 2018	0.5%	1.0%	0.7%
RACE AND ETHNICITY	2018 Estimated White	83.5%	89.5%	91.0%
	2018 Estimated Black or African American	6.8%	3.5%	3.2%
	2018 Estimated Asian or Pacific Islander	6.7%	5.2%	4.0%
	2018 Estimated American Indian or Native Alaskan	0.2%	0.1%	0.1%
	2018 Estimated Other Races	2.8%	1.7%	1.7%
	2018 Estimated Hispanic	3.8%	2.2%	2.3%
INCOME	2018 Estimated Average Household Income	\$102,075	\$113,328	\$105,196
	2018 Estimated Median Household Income	\$80,415	\$85,261	\$80,156
	2018 Estimated Per Capita Income	\$43,286	\$46,458	\$44,591
EDUCATION (AGE 25+)	2018 Estimated Elementary (Grade Level 0 to 8)	2.0%	1.8%	1.8%
	2018 Estimated Some High School (Grade Level 9 to 11)	0.7%	2.7%	3.5%
	2018 Estimated High School Graduate	21.9%	24.3%	27.2%
	2018 Estimated Some College	22.5%	19.5%	20.3%
	2018 Estimated Associates Degree Only	9.0%	9.0%	9.2%
	2018 Estimated Bachelors Degree Only	24.3%	24.9%	23.1%
	2018 Estimated Graduate Degree	19.6%	17.7%	15.0%
BUSINESS	2018 Estimated Total Businesses	194	1,391	3,510
	2018 Estimated Total Employees	1,599	12,974	44,023
	2018 Estimated Employee Population per Business	8.2	9.3	12.5
	2018 Estimated Residential Population per Business	24.7	29.4	28.4