

FOR SALE OR LEASE > NEW 10,000 SF OFFICE/WAREHOUSE



Selma Industrial Park II

1028 VALLEY VIEW COURT

SEC NEBRASKA AND PACIFIC AVENUES, SELMA, CALIFORNIA



Property Summary

- > New 10,000 SF Office/Warehouse Building
- > Located in the Selma Industrial Park II
- > Lot Size is 1.46 acres
- > Zoned "Light Industrial" (City of Selma)
- > 1,350 SF of Office Space
- > Four (4) - 14' x 14' Roll-Up Doors
- > Purchase Price: \$875,000
- > Lease Rate: \$0.60 PSF, NNN
- > APN: 390-210-08S
- > 16 Foot Clear Height

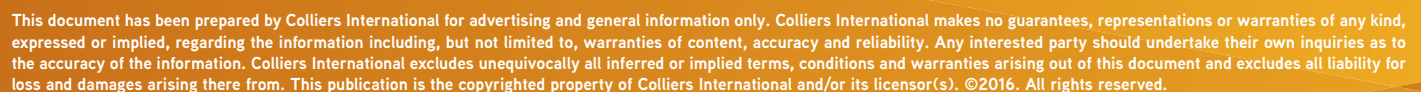


- > Metal Construction Type
- > 400 Amp, 208v, 3-Phase Power
- > Fully Fenced
- > Scheduled for Completion January 2018

AGENT: CHAD MCCARDELL
559 221 1271 | EXT. 121
chad.mccardell@colliers.com
BRE #01313658

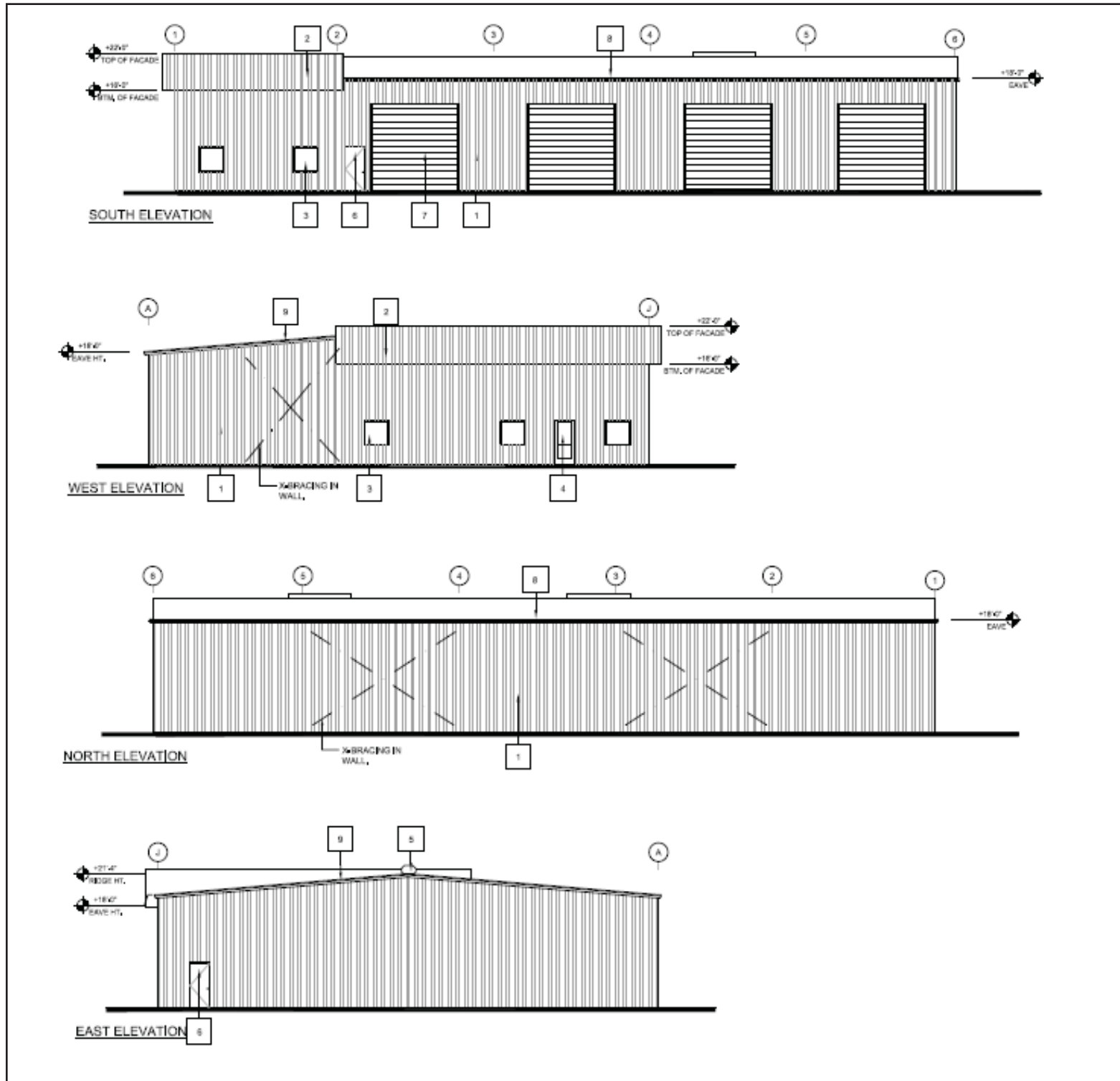
COLLIERS INTERNATIONAL
7485 N. Palm Avenue, #110
Fresno, CA 93711
www.colliers.com/fresno

Selma Industrial Park II

[illegible]

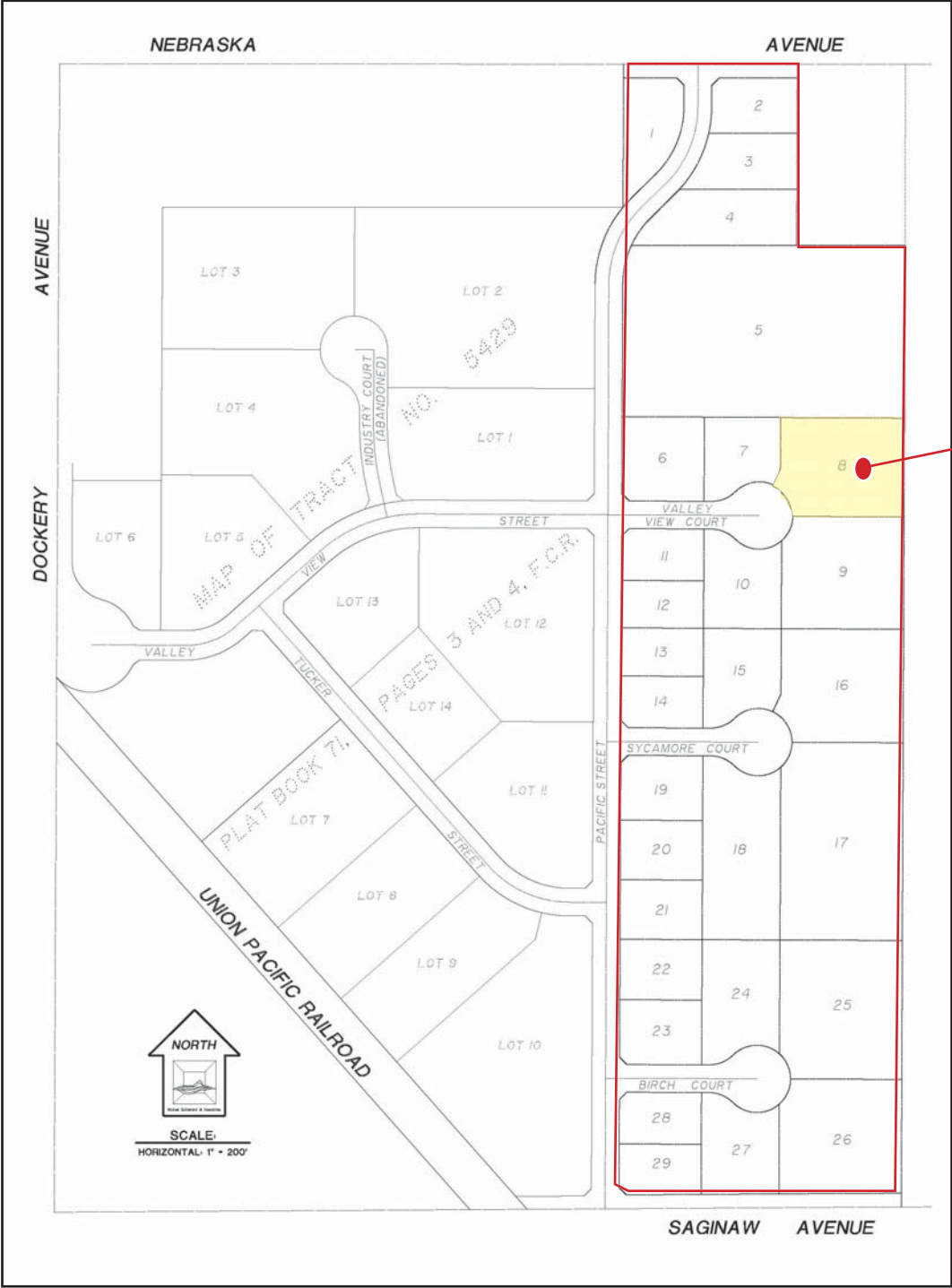
Selma Industrial Park II

1028 VALLEY VIEW COURT, SELMA, CALIFORNIA



Selma Industrial Park II

1028 VALLEY VIEW COURT, SELMA, CALIFORNIA



This document has been prepared by Colliers International for advertising and general information only. Colliers International makes no guarantees, representations or warranties of any kind, expressed or implied, regarding the information including, but not limited to, warranties of content, accuracy and reliability. Any interested party should undertake their own inquiries as to the accuracy of the information. Colliers International excludes unequivocally all inferred or implied terms, conditions and warranties arising out of this document and excludes all liability for loss and damages arising there from. This publication is the copyrighted property of Colliers International and/or its licensor(s). ©2016. All rights reserved.