

Land For Sale

W Pleasant Grove Road

12,000 ADT (2016)

South of W Pleasant Grove Road, Rogers | AR

Located on the SW corner of W Pleasant Grove Rd and Razorback Greenway Trail in Rogers, one of the fastest growing cities in NWA. Zoned commercial and surrounded by upscale neighborhoods and major retailers.

Contact us:

Steven P. Lane

Managing Director | Arkansas

D: +1 479 845 1515

steve.lane@colliers.com

FEATURES



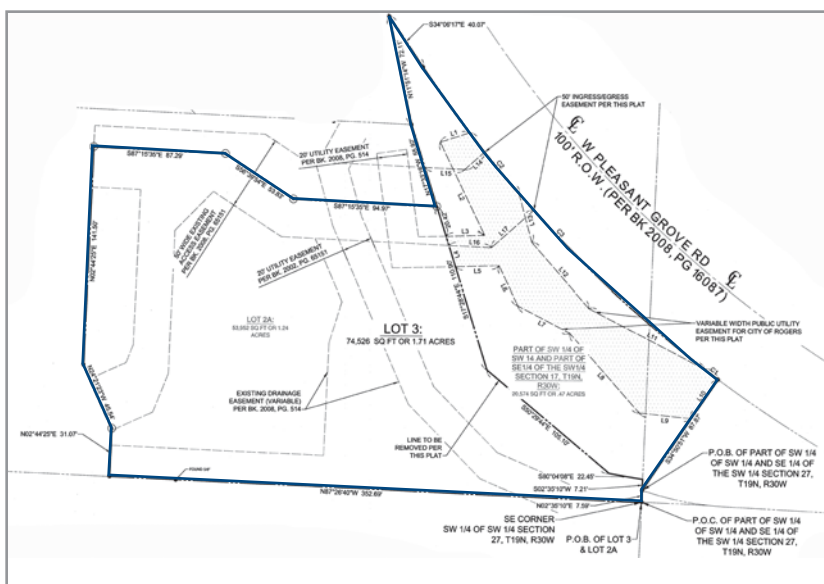
Zoned Commercial



Approximately 1 minute
(0.6 miles) to I-49



+/- 1.71 Acres

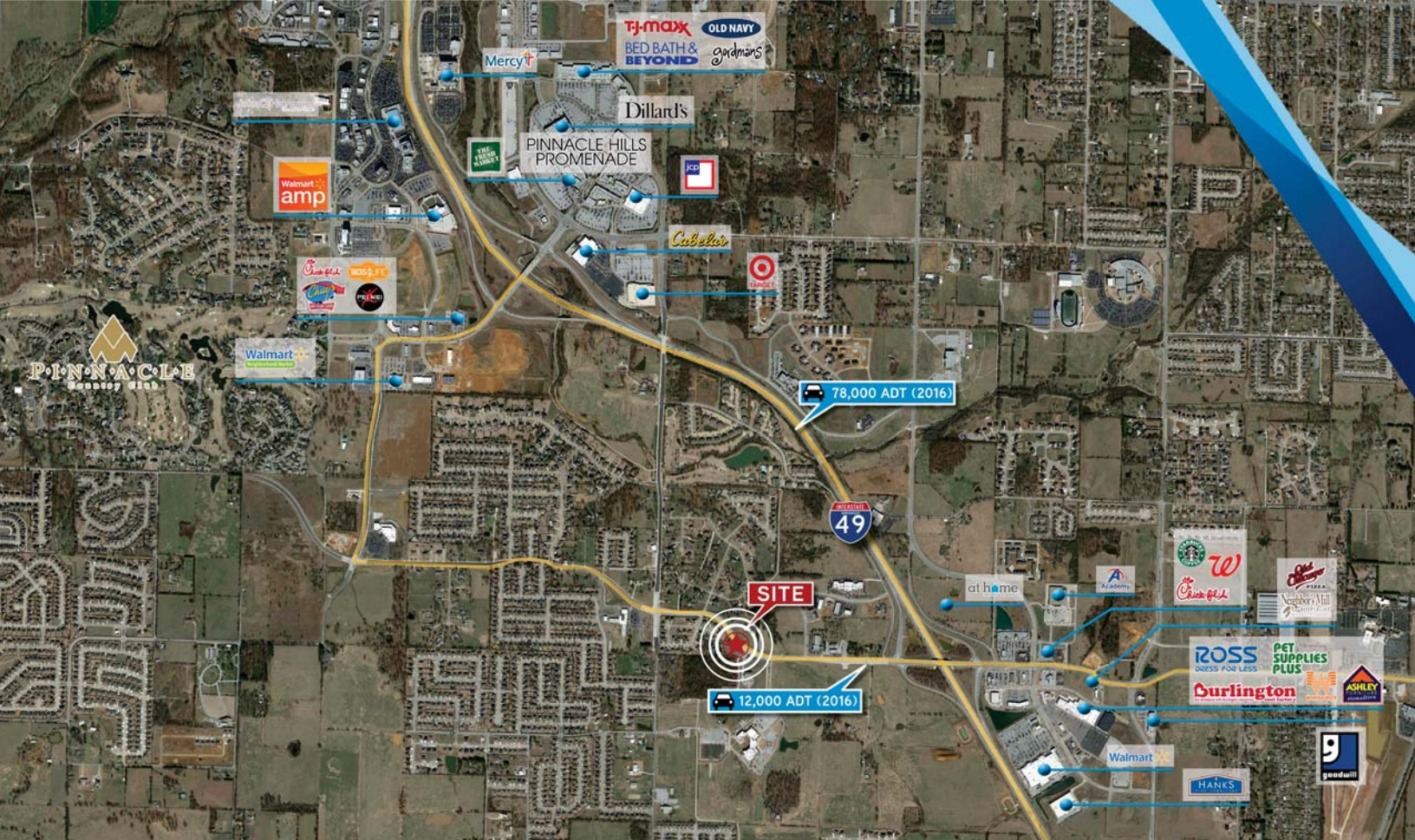


\$521,413 (\$7.00 PSF)



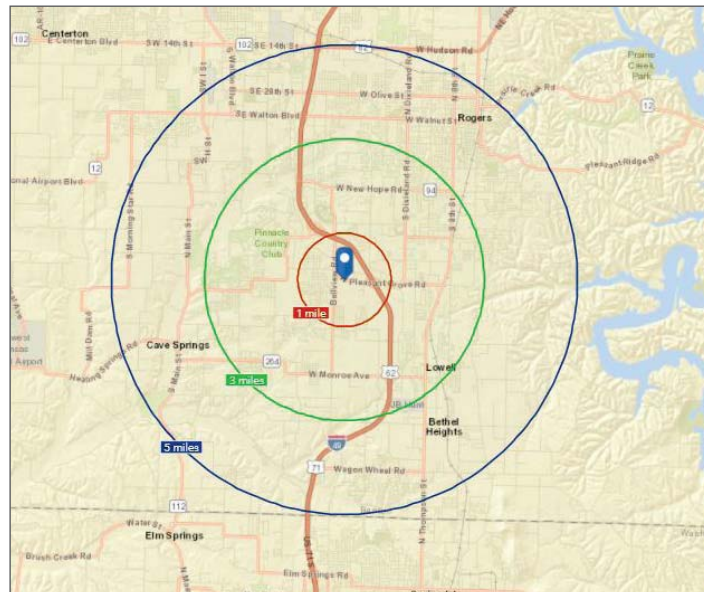
This document has been prepared by Colliers International for advertising and general information only. Colliers International makes no guarantees, representations or warranties of any kind, expressed or implied, regarding the information including, but not limited to, warranties of content, accuracy and reliability. Any interested party should undertake their own inquiries as to the accuracy of the information. Colliers International excludes unequivocally all inferred or implied terms, conditions and warranties arising out of this document and excludes all liability for loss and damages arising therefrom. This publication is the copyrighted property of Colliers International and/or its licensor(s). ©2017. All rights reserved.

Colliers International
4204 S. Pinnacle Hills Pkwy | Suite 102
Rogers, AR 72758
P: +1 479 845 6000
www.colliers.com/arkansas



Demographics >

	1-MILE	3-MILE	5-MILE
POPULATION			
2017 Est. Population	4,433	35,242	86,348
2022 Proj. Population	5,246	40,289	96,739
HOUSEHOLDS			
2017 Est. Households	1,600	12,641	30,444
2022 Est. Households	1,892	14,448	34,115
2017 INCOME			
Average HH Income	\$123,282	\$101,017	\$83,371
Median HH Income	\$98,470	\$69,267	\$57,648



Contact us:

Steven P. Lane

Managing Director | Arkansas
D: +1 479 845 1515
steve.lane@colliers.com

Colliers International
4204 S. Pinnacle Hills Pkwy | Suite 102
Rogers, AR 72758
P: +1 479 845 6000
www.colliers.com/arkansas

