

FOR LEASE > 2,636-4,158± SF

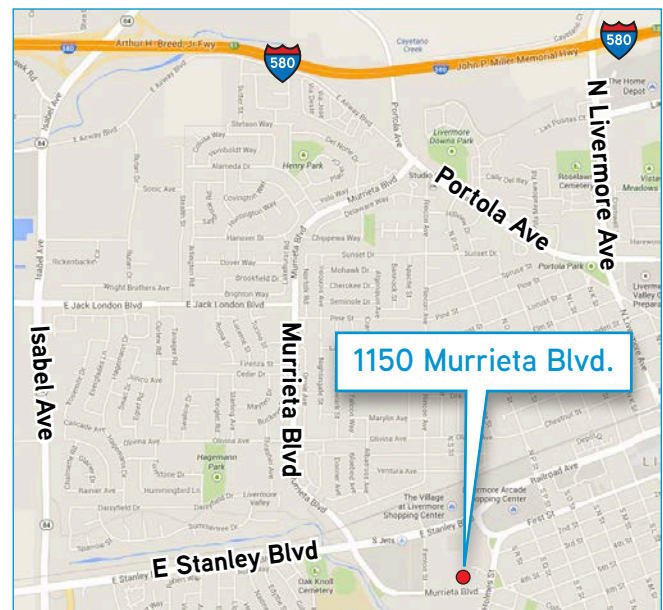
# Office Space

1150 MURRIETA BOULEVARD, LIVERMORE, CA



## Features

- > 4,158± SF (divisible to 2,636± SF)
- > Professional office zoning
- > Near downtown Livermore
- > Beautiful architecture and landscaping
- > Adjacent to Valley Care Medical Center
- > Ground floor occupied by Advanced Health Chiropractic
- > Office improvements complete
- > Elevator
- > Asking \$1.75 psf Modified Gross



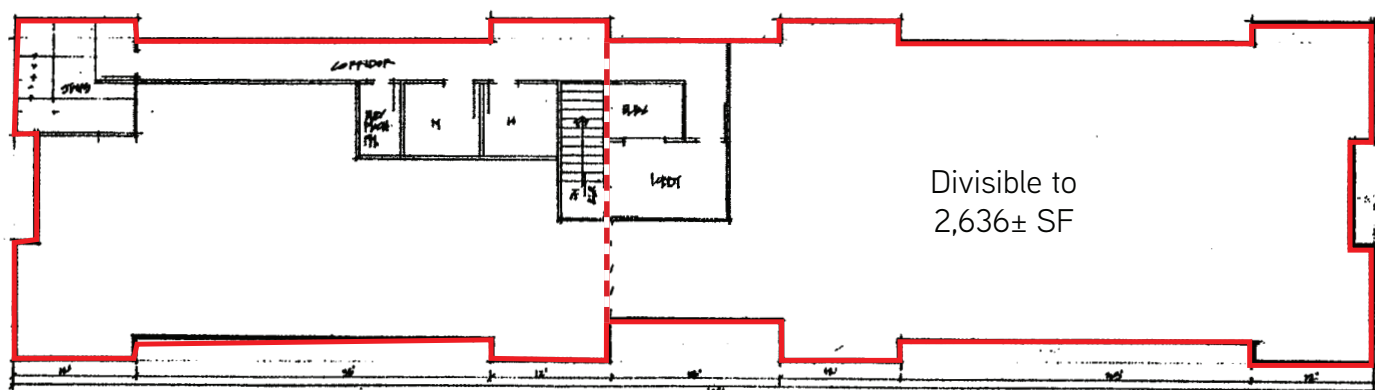
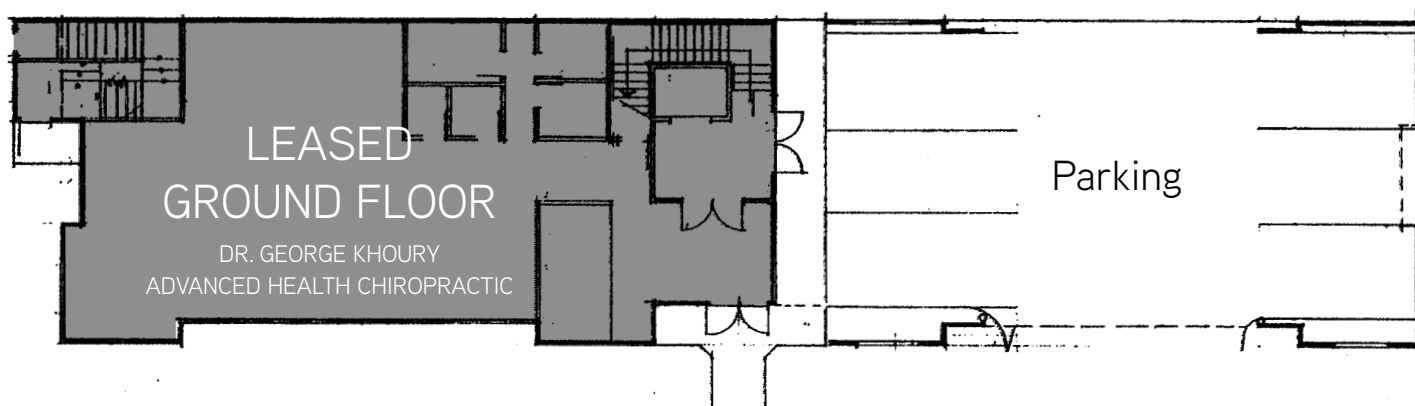
GEORGE WINEINGER  
+1 925 227 6214  
george.wineinger@colliers.com  
CA License No. 00878573

COLLIERS INTERNATIONAL  
3825 Hopyard Road, Suite 195  
Pleasanton, CA 94588  
www.colliers.com

FOR LEASE > 2,636-4,158± SF

# Office Space

1150 MURRIETA BOULEVARD, LIVERMORE, CA



AVAILABLE NOW - 4,158± SF



GEORGE WINEINGER  
+1 925 227 6214  
george.wineinger@colliers.com  
CA License No. 00878573

COLLIERS INTERNATIONAL  
3825 Hopyard Road, Suite 195  
Pleasanton, CA 94588  
www.colliers.com