

# 55 CORPORATE DRIVE TRUMBULL, CT

## 27,579 SF | PROFESSIONAL SPACE

Located in Trumbull, 55 Corporate Drive provides a unique opportunity for professional occupiers to join the buildings tenant roster with competitively priced block of space and smaller suite opportunities. With nearly 47,000 RSF spanning three floors with access through the main lobby, all three floors can be taken as a whole, separated, or divided as needed. The premier location on Corporate Drive offers direct access to Monroe Turnpike, less than 1-mile to the Route 25 connector, 5.5 miles to Merritt Parkway, and 14 minutes to Amtrak via Bridgeport.



**Class A  
building**



**Abundant  
parking**



**Park/campus  
setting**



**Easy access from Rt 25  
& Monroe Turnpike**



**Close to area  
amenities**



**On-site property  
management**



Owned by



Trefoil  
Park  
Properties

Leased by



## BUILDING FACT SHEET

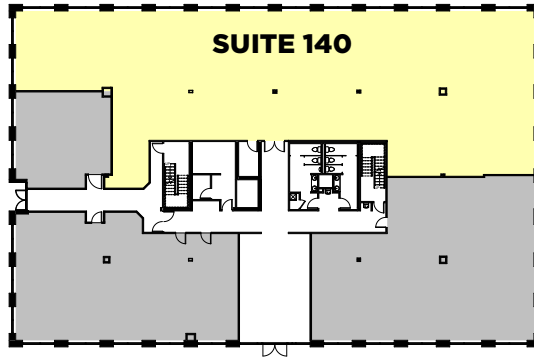
<b>GROSS RENTABLE AREA</b>	<b>47,264</b>
<b>AVAILABLE</b>	<b>29,559</b>
<b>BUILDING HEIGHT</b>	<b>3 STORIES</b>
<b>PROPERTY</b>	<b>3.90 ACRES</b>
<b>FOOR HEIGHT (SLAB TO SLAB)</b>	<b>13'</b>
<b>BUILT</b>	<b>1990</b>
<b>FLOOR PLATE AREAS</b>	<b>1ST 15,000</b>
	<b>2ND 15,000</b>
	<b>3RD 15,000</b>
<b>ZONING</b>	<b>IL2</b>
<b>ELEVATORS</b>	<b>ONE PASSENGER ELEVATOR</b>
<b>BUILDING ACCESS</b>	<b>24 HOURS/7 DAYS</b>
<b>PARKING</b>	<b>4.1/1,000</b>
<b>HVAC</b>	<b>ROOF TOP UNITS</b>
<b>LIFE SAFETY</b>	<b>WET SPRINKLERED BUILDING</b>
<b>WATER/SEWER</b>	<b>CITY</b>
<b>HEATING</b>	<b>GAS</b>
<b>BUILDING MANAGEMENT</b>	<b>ON-SITE</b>



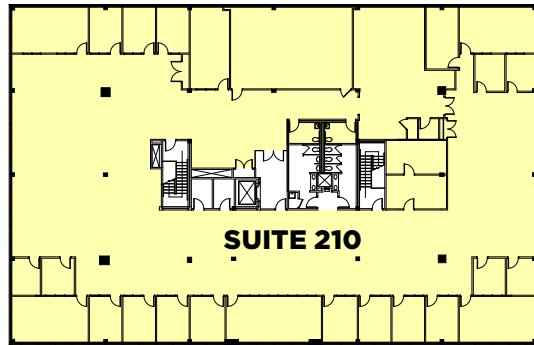




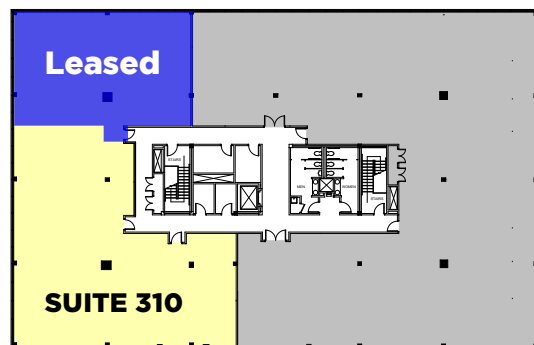
# AVAILABILITIES



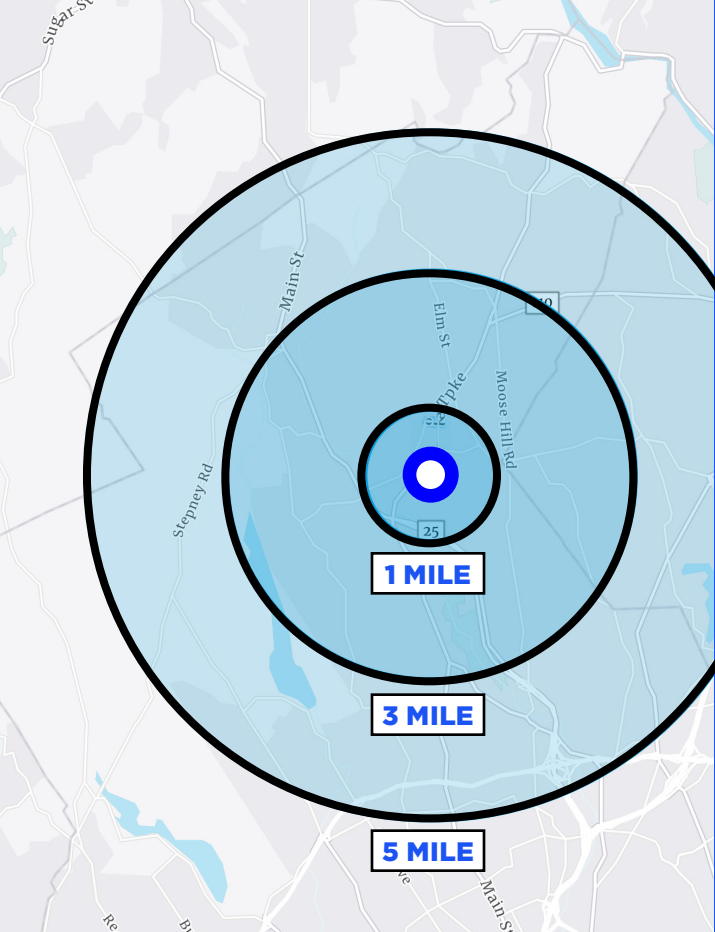
**FLOOR 1**  
**SUITE 140 - 7,010 SF**



**FLOOR 2**  
**SUITE 210 - 16,425 SF**



**FLOOR 3**  
**SUITE 310 - 4,144 SF**

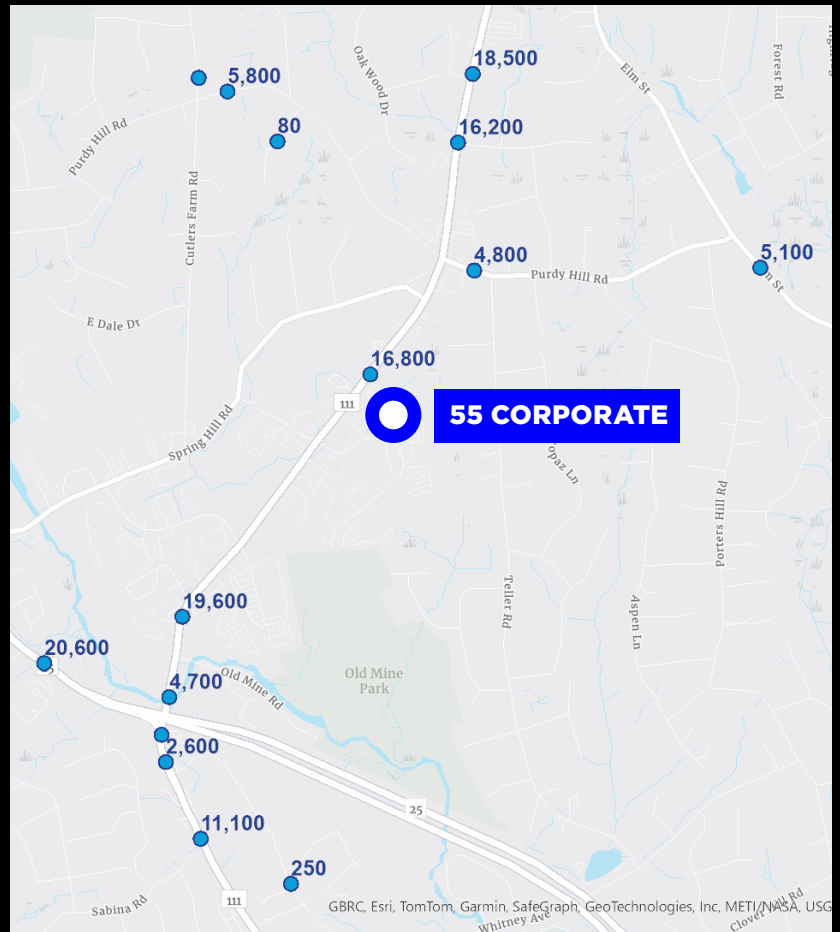


## DEMOGRAPHICS

	1 Mi	3 Mi	5 Mi
<b>Population</b>			
2023 Estimated Population	3,049	28,872	74,974
<b>Income</b>			
2023 Avg. Household Income	\$208,301	\$191,216	\$185,869
<b>Occupation</b>			
Architecture/Eng.	56	485	1,586
Arts/Ent./Media	37	390	1,090
Business/Financial	178	1,696	4,015
Community/Service	19	398	875
Computer/Math	112	824	2,182
Education/Training	120	1,248	3,246
Healthcare	119	1,184	3,559
Legal	12	240	904
Life/Physical	14	160	304
Management	281	2,463	6,189
Sales	120	1,406	3,547
Office/Admin	155	1,366	3,397

## TRAFFIC COUNTS

Street	Count	Year
Monroe Tpke	16,800	2012
Purdy Hill Rd	4,800	2010
Monroe Turnpike	19,600	2020
Monroe Turnpike	16,200	2020
Blueberry Hill Road	80	2020
Monroe Tpke	4,700	2018
Main St	4,300	2018
Monroe Tpke	18,500	2005
Purdy Hill Road	5,800	2020
Main St	2,600	2018
Elm St	5,100	2018
Cutlers Farm Rd	3,800	2010
Main Street	20,600	2020
Main Street	11,100	2020
Broadway Road	250	2020



# CORPORATE DRIVE 55 TRUMBULL, CT

## **ROBERT LELLA**

SENIOR VICE PRESIDENT

914 439 4597

ROBERT.LELLA@COLLIERS.COM

## **DANIEL MUNDLE**

ASSOCIATE

203 543 2872

DANIEL.MUNDLE@COLLIERS.COM



**COLLIERS INTERNATIONAL CT, LLC  
1055 WASHINGTON BOULEVARD  
STAMFORD, CT 06901**

No representation is made as to the accuracy of the information furnished herein and same is submitted subject to errors, omissions, change of prices, rental, or other conditions, prior sale, lease, sublease, and/or withdrawal without notice. While every attempt is made to ensure accuracy, the floor plan(s) is for guidance only. The measurements, dimensions, specifications, and other data shown are approximate and may not be to scale. We assume no responsibility for the accuracy of the floor plan(s) or for any action taken in reliance thereon. The floor plan(s) do not create any representation, warranty or contract. All parties should consult a professional, such as an architect, to verify the information contained herein. The furnishing of this information shall not be deemed a hiring. A commission in accordance with our principal's schedule of rates and conditions will be paid to the procuring Broker who executes our or our principal's brokerage agreement, subject to a fully consummated transaction upon terms and conditions acceptable to our principal. Colliers International CT, LLC