

FOR LEASE > OFFICE SPACE

# 350 Sansome Street

FINANCIAL DISTRICT LOCATION WITH CLASS A STANDARDS



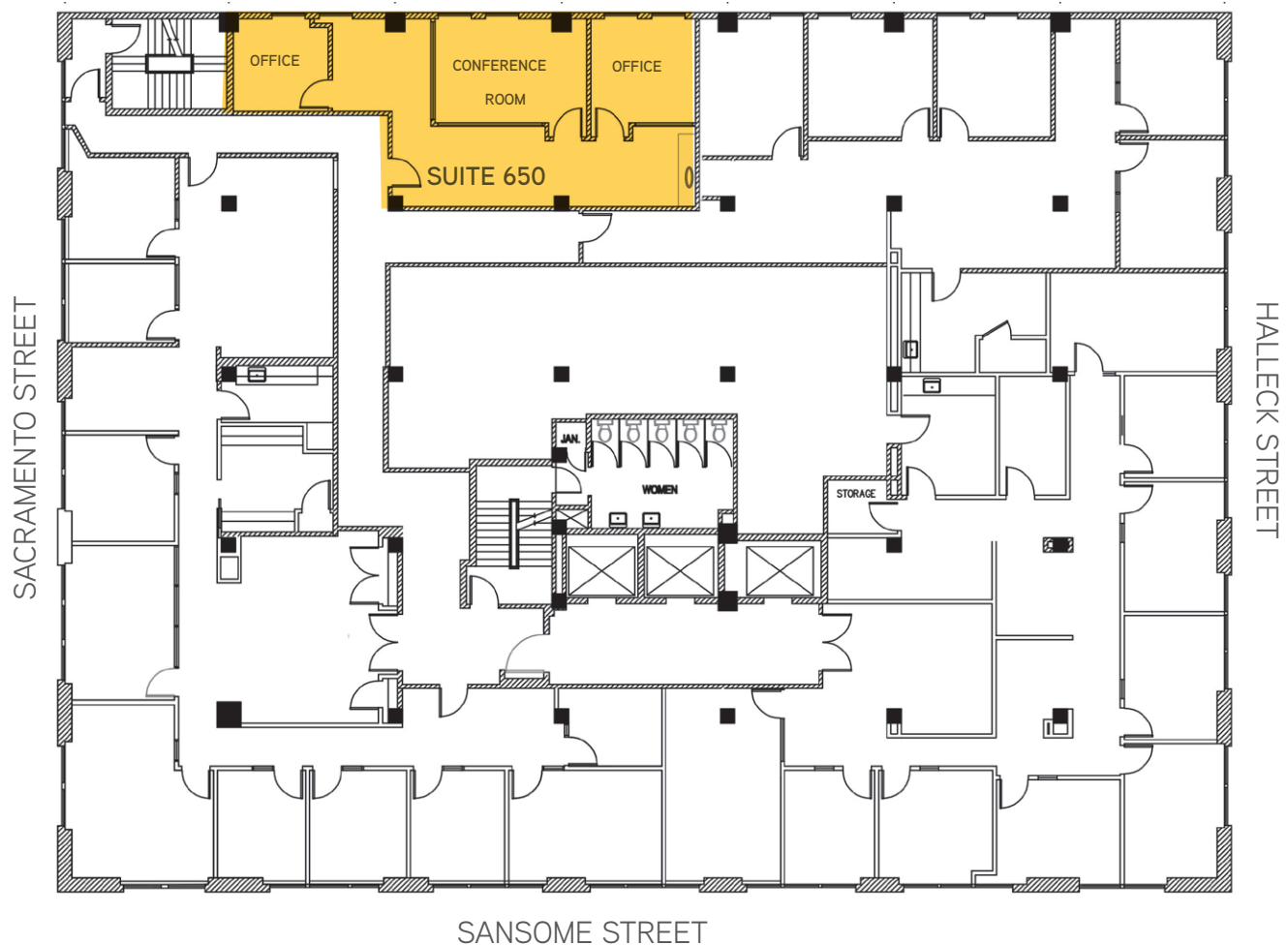
## Building Amenities

- > 10-story building on the corner of Sacramento & Sansome Streets
- > Class A standards - HVAC, lobby guard, card key access after hours
- > Excellent windowline on four sides
- > Underground car and bicycle parking
- > Operable windows and HVAC
- > Retail amenities: Planet Fitness, Federal Express



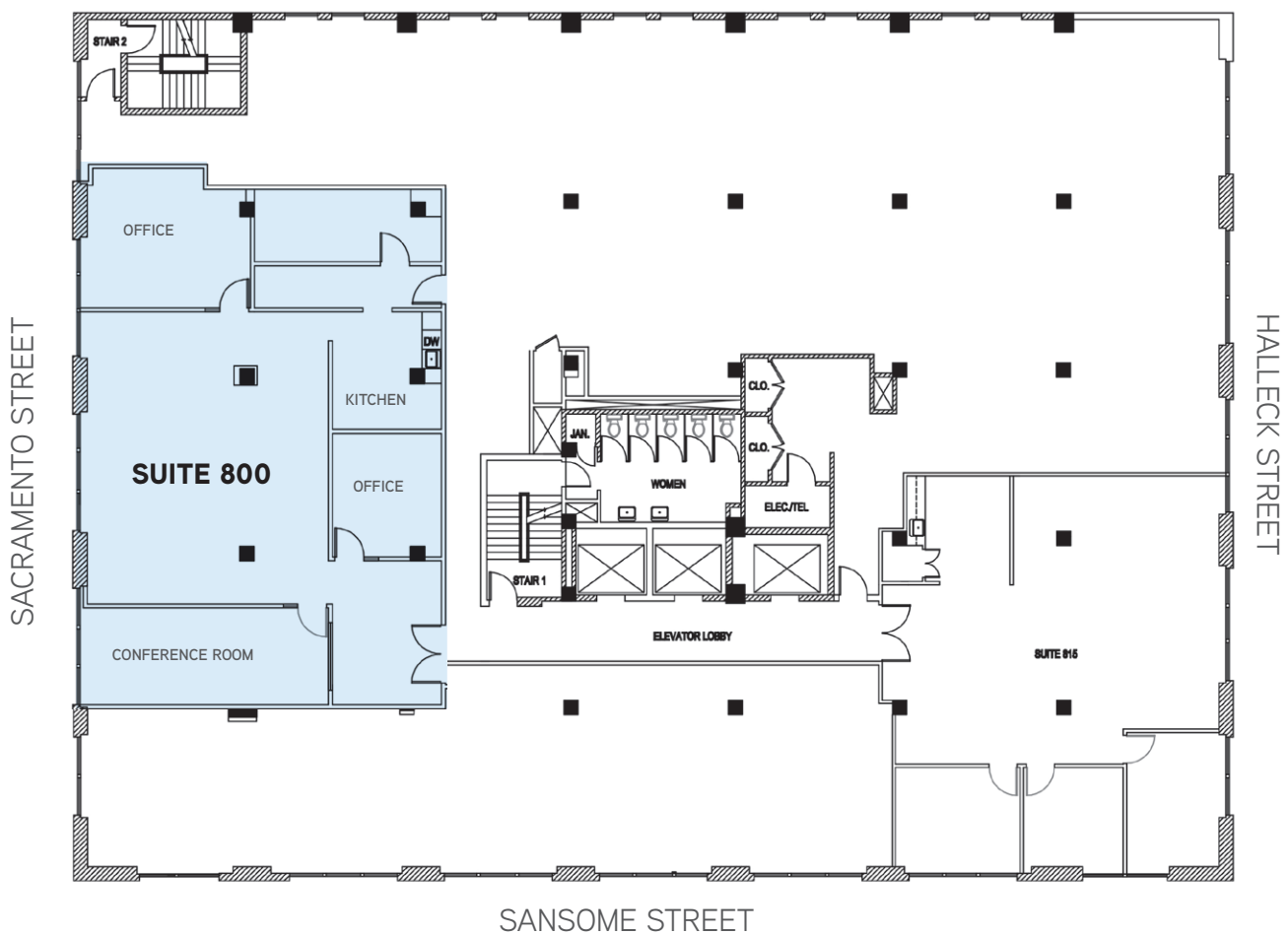
### 6th Floor Highlights

- Suite 650
- 965 Square Feet
- 2 offices
- Conference room
- Kitchenette
- Reception area
- Available now



## 8th Floor Highlights

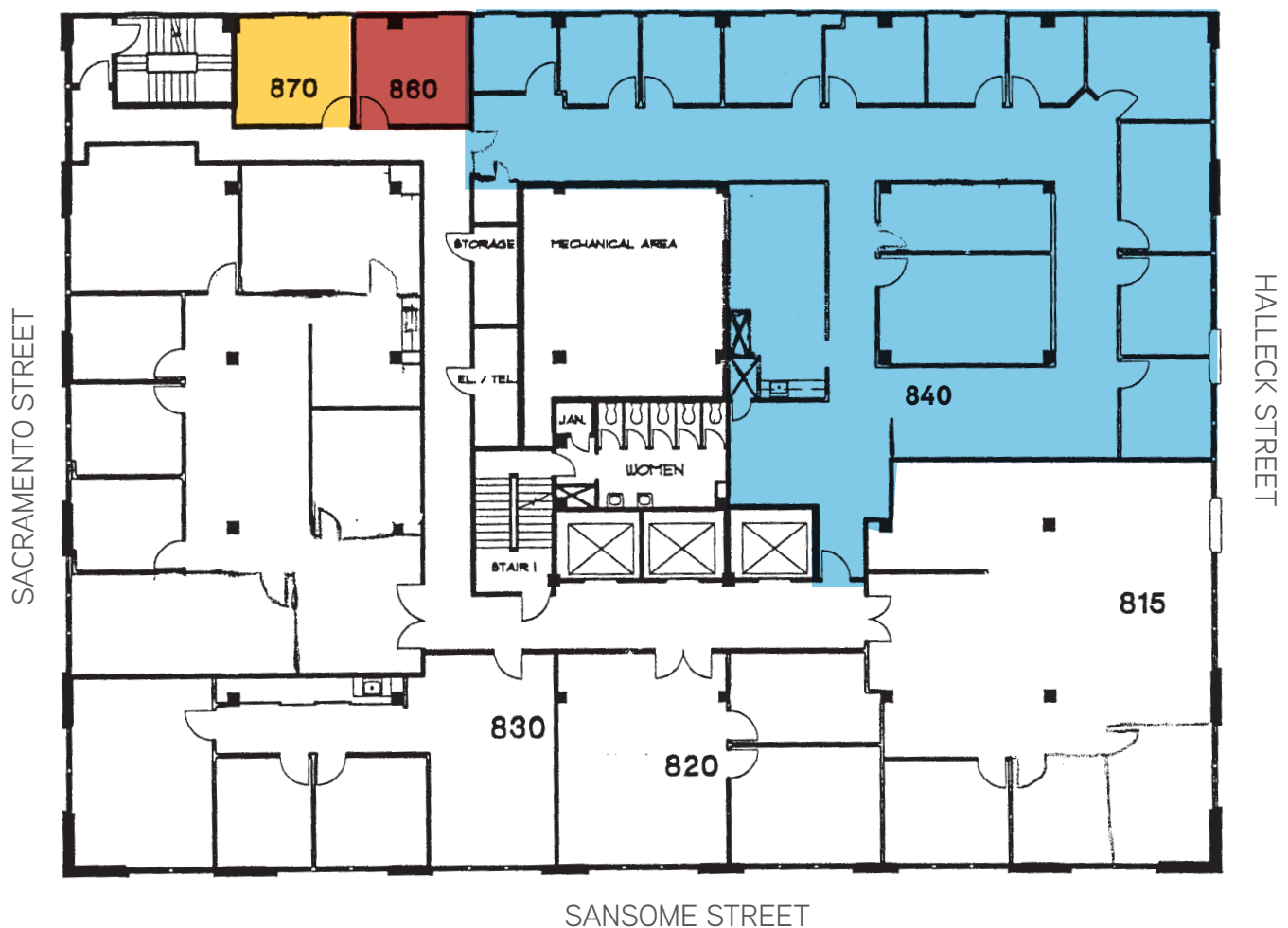
- Suite 800
- 2,518 Square Feet
- Large open area
- 2 offices
- 1 conference room & kitchenette
- Available February 1, 2019



This document has been prepared by Colliers International for advertising and general information only. Colliers International makes no guarantees, representations or warranties of any kind, expressed or implied, regarding the information including, but not limited to, warranties of content, accuracy and reliability. Any interested party should undertake their own inquiries as to the accuracy of the information. Colliers International excludes unequivocally all inferred or implied terms, conditions and warranties arising out of this document and excludes all liability for loss and damages arising there from. This publication is the copyrighted property of Colliers International and/or its licensor(s). ©2018. All rights reserved.

### 8th Floor Highlights

- Suite 840 | 3,753 Square Feet
- Suite 860 | 178 Square Feet
- Suite 870 | 178 Square Feet
- Total | 4,109 Square Feet
- Available Now





## 9th Floor Highlights

- Suite 925
- 5,752 Square Feet
- 2 butted glass conference rooms and large kitchen
- 2 phone rooms
- High exposed concrete ceilings
- Available April 1, 2019

