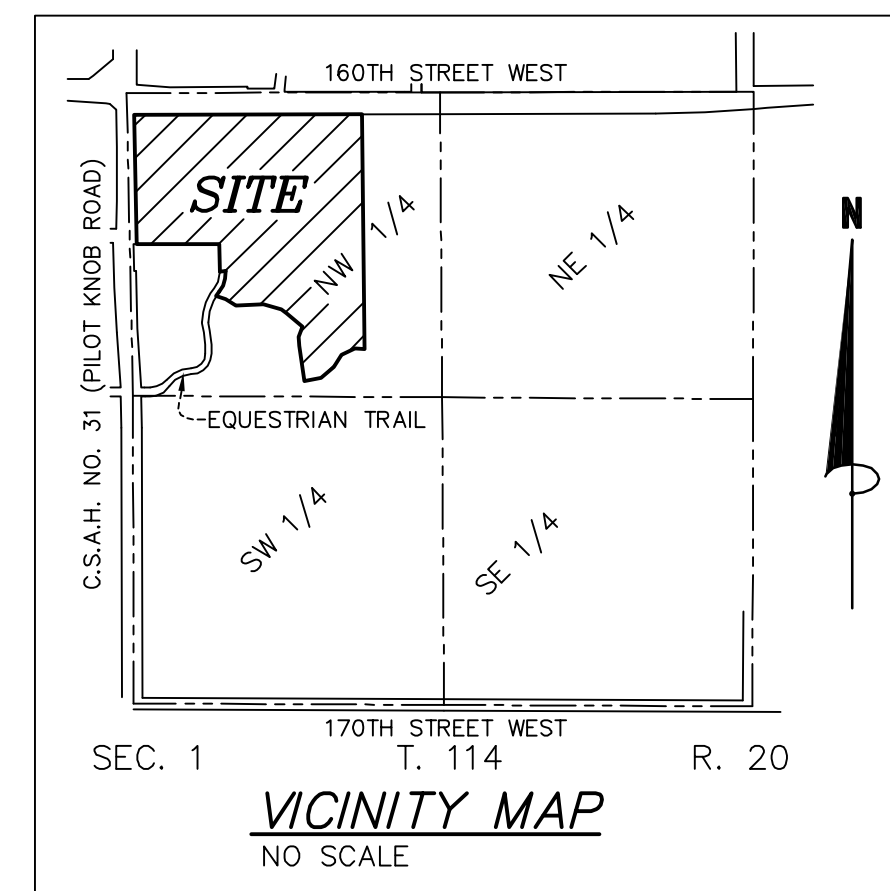
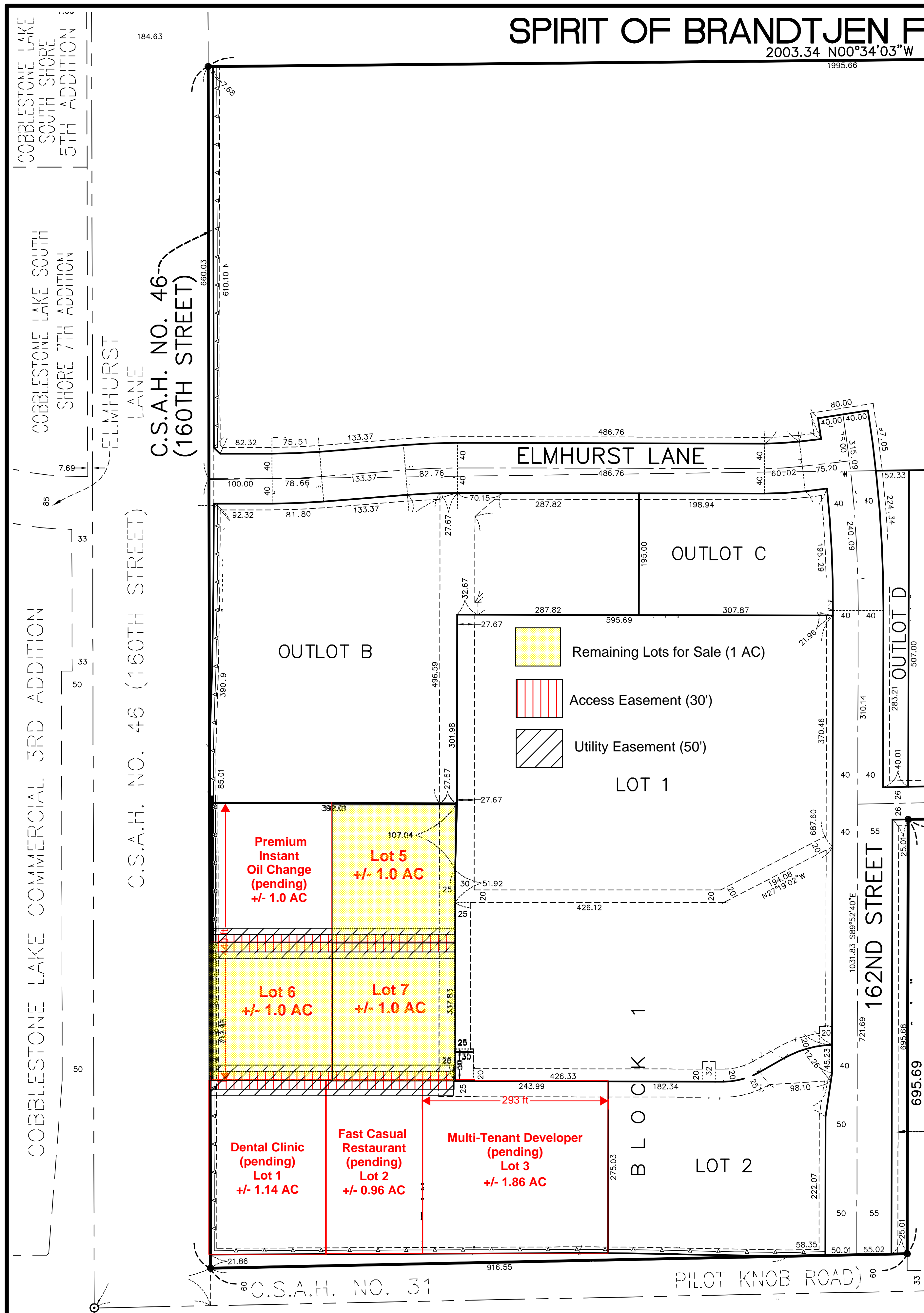


SPIRIT OF BRANDTJEN FARM COMMERCIAL 1ST ADDITION

2003.34 N00°34'03"W
1995.66

NOT FILED



—▲— DENOTES RESTRICTED ACCESS DEDICATED TO DAKOTA COUNTY PER SPIRIT OF BRANDTJEN FARM

● DENOTES 1/2 INCH MONUMENT FOUND

BEARINGS ARE BASED ON THE NORTH LINE OF OUTLOT CC, SPIRIT OF BRANDTJEN FARM WHICH IS ASSUMED TO HAVE A BEARING OF N89°53'13"E.

NOTE: NO MONUMENT SYMBOL SHOWN AT ANY STATUTE REQUIRED LOCATION INDICATES A PLAT MONUMENT THAT WILL BE SET WITHIN ONE YEAR FROM THE RECORDING DATE OF THIS PLAT. SAID MONUMENTS SHALL BE 1/2 INCH x 14 INCH GALVANIZED IRON PIPES MARKED BY R.L.S. NO. 12294.

