

FOR LEASE > BUILDING I

Office Space

8025 SOUTH WILLOW STREET, MANCHESTER, NH 03103

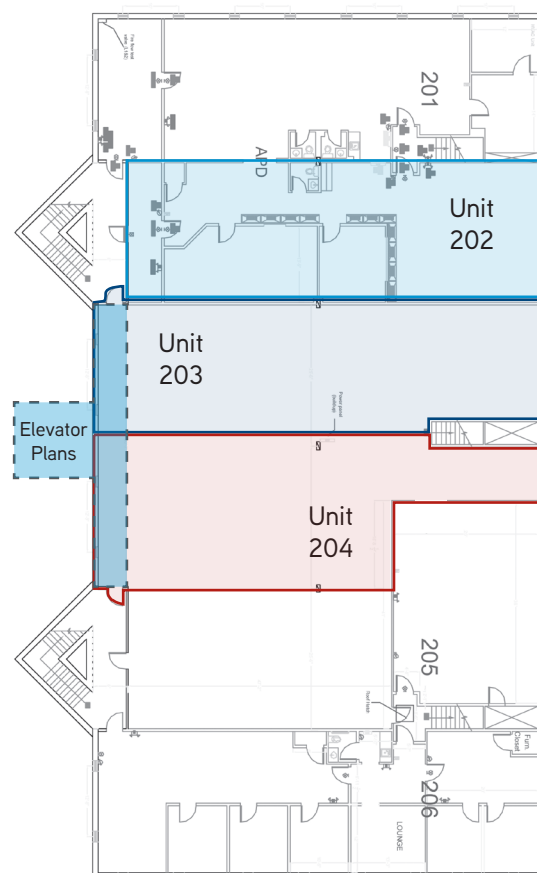


Snapshot > Office Space

Building Type	Flex
Total Building SF	24,000±
Available SF	2,000± to 6,000±
Year Built	1984
Utilities	Municipal water and sewer Natural gas
Sprinkler System	Wet
Parking	Ample
Zoning	General Industrial (IND)
2017 NNN Expenses PSF	\$3.57 > CAM: \$2.22 > Taxes: \$1.35

Lease Rate **\$8.00 NNN**

Second Floor Plan



SYBIL MORIN
DIR +1 603 206 9614
MANCHESTER, NH
sybil.morin@colliers.com

DAN SCANLON, JD, CCIM
DIR +1 603 206 9605
MANCHESTER, NH
dan.scanlon@colliers.com

COLLIERS INTERNATIONAL
175 Canal Street, Suite 401
Manchester, NH 03101
MAIN +1 603 623 0100
www.colliers.com

8025 South Willow Street | Manchester, NH



Property Highlights

- › 2,000± to 6,000± SF of unfinished contiguous office space on the second floor of Building I
- › Property consists of 2 well-maintained buildings with on-site management
- › 2018 planned improvements include an elevator and lighting packs to highlight the exterior of the building
- › Ideal location on South Willow Street with access to I-293, via Exit 1, or I-93, via Exit 5
- › Surrounded by many retailers and services including Manchester-Boston Regional Airport, Mall of New Hampshire, US Post Office, multiple restaurants, and more

Contact Us

SYBIL MORIN
DIR +1 603 206 9614
MANCHESTER, NH
sybil.morin@colliers.com

DAN SCANLON, JD, CCIM
DIR +1 603 206 9605
MANCHESTER, NH
dan.scanlon@colliers.com

COLLIERS INTERNATIONAL
175 Canal Street, Suite 401
Manchester, NH 03101
MAIN +1 603 623 0100
www.colliers.com