

FOR SUBLEASE > 11,500± SF OF OVERSTANDARD OFFICE SPACE

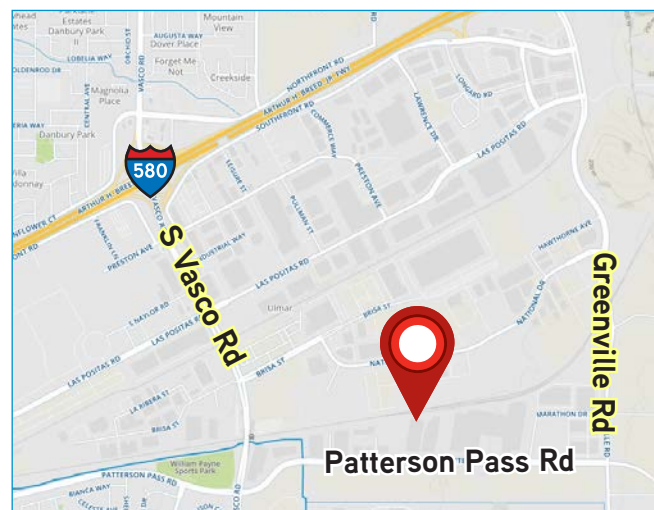
# Unique Livermore Office Space

6818 PATTERSON PASS ROAD, SUITE A, LIVERMORE, CA



## Highlights

- > 11,500± SF of overstandard, beautifully built-out office space
- > Strategically located off I-580 between Greenville and Vasco Roads (adjacent to Sandia and LLNL labs)
- > Excellent floor plan includes large open areas, 10 private offices, large and small conference rooms, large break room, server room and many other Class A finishes and amenities
- > In place office furniture negotiable
- > Floor plan on reverse
- > Sublease through August 30, 2020
- > Discounted asking price of \$1.00 PSF Gross!



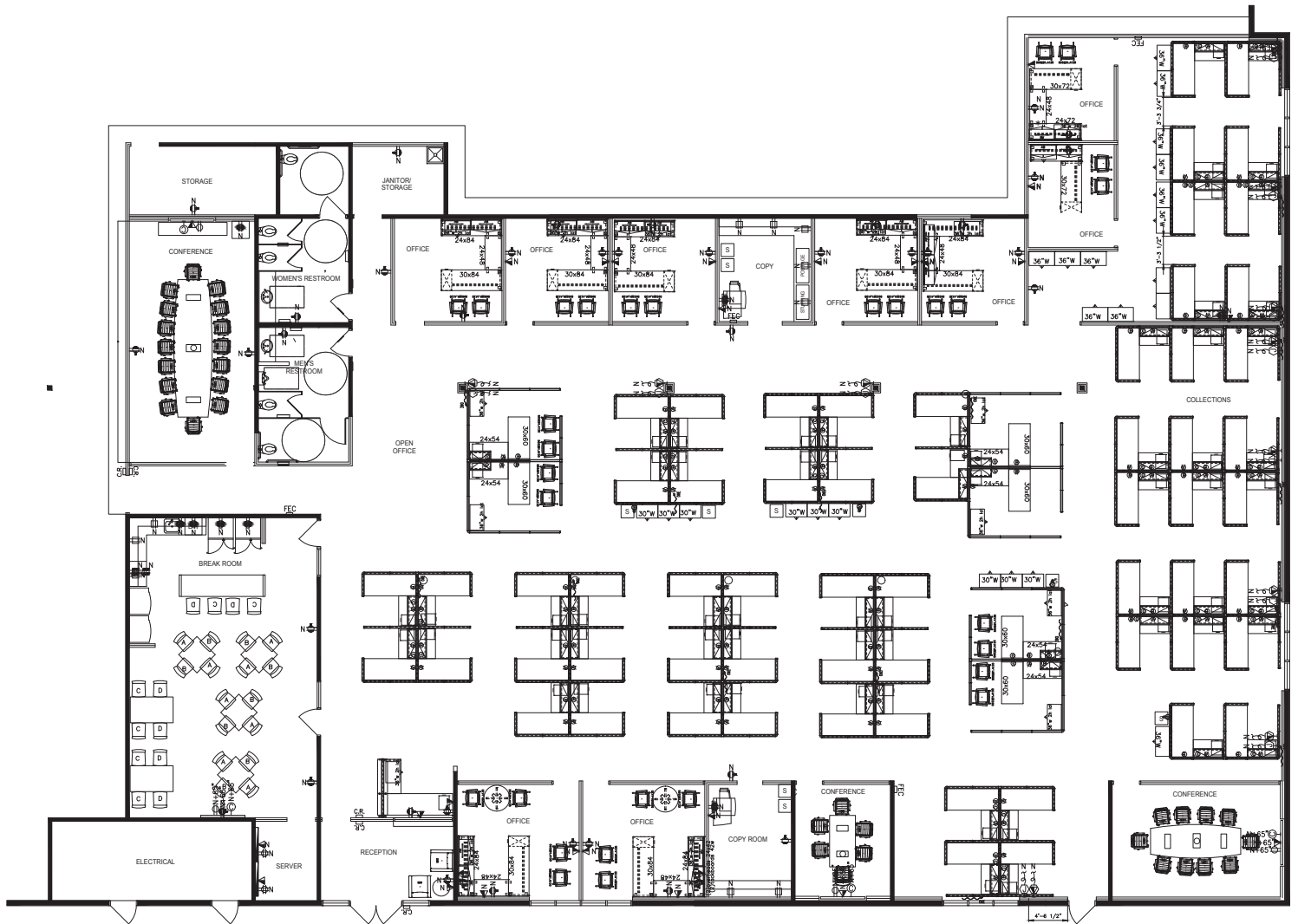
MARK TRISKA, SIOR  
+1 925 227 6210  
mark.triska@colliers.com  
CA License No. 01012779

COLLIERS INTERNATIONAL  
3825 Hopyard Road, Suite 195  
Pleasanton, CA 94588  
www.colliers.com

FOR SUBLEASE > 11,500± SF OF OVERSTANDARD OFFICE SPACE

# Unique Livermore Office Space

6818 PATTERSON PASS ROAD, SUITE A, LIVERMORE, CA



MARK TRISKA, SIOR  
+1 925 227 6210  
mark.triska@colliers.com  
CA License No. 01012779

COLLIERS INTERNATIONAL  
3825 Hopyard Road, Suite 195  
Pleasanton, CA 94588  
www.colliers.com