



517 S. Lake Avenue
PASADENA, CA

Retail Space for Lease



Property Highlights

517 S. Lake Avenue (“Subject Property”) consists of a one-story retail building currently owned by the California Credit Union. The Subject Property is comprised of a 3,470 square foot retail building. The interior of the Subject Property was previously a children’s retail clothing and accessory store. The Subject Property has a abundant free parking for tenants and visitors to the rear on Hudson Avenue. The property is located near the South Lake Avenue Business District with great surrounding amenities. This area offers easy access to major freeways (i.e. 110, 210, and 134), and has a Gold Line station within walking distance.

Property Details

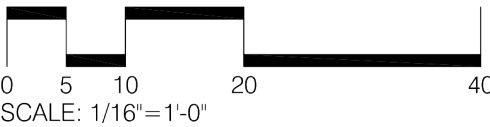
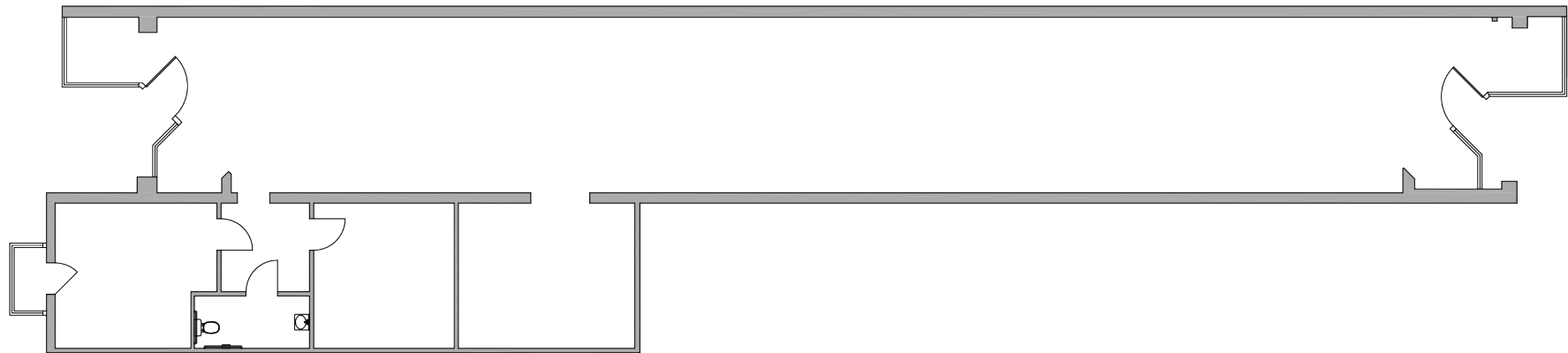
Address	517 S. Lake Avenue Pasadena, CA
Asking Rate	\$3.75 Triple Net
Space SF	3,470
Signage	Building
Walking Score	91
Parking	Lot to the rear



Parking



Floor Plan



Corey A. Waite
Senior Vice President
Lic. 01134516
+1 213 532 3262
corey.waite@colliers.com

Hayden C. Eaves IV
Senior Vice President
Lic.00964951
+1 213 532 3260
hayden.eaves@colliers.com

Erin Silvertooth
Client Services Specialist
Lic. 01996584
+1 213 532 3271
erin.silvertooth@colliers.com

This document has been prepared by Colliers International for advertising and general information only. Colliers International makes no guarantees, representations or warranties of any kind, expressed or implied, regarding the information including, but not limited to, warranties of content, accuracy and reliability. Any interested party should undertake their own inquiries as to the accuracy of the information. Colliers International excludes unequivocally all inferred or implied terms, conditions and warranties arising out of this document and excludes all liability for loss and damages arising there from. This publication is the copyrighted property of Colliers International and/or its licensor(s). ©2018. All rights reserved.

Colliers International
865 South Figueroa Street | Suite 3500
Los Angeles, CA 90017 | United States
colliers.com/greaterlosangeles

