



A photograph of the Squires II Office Center, a two-story brick building with large windows. The building is surrounded by trees with vibrant autumn foliage in shades of orange, red, and yellow. Several cars are parked in a lot in front of the building. The sky is clear and blue.

**SQUIRES II**  
16655

## OFFICE SPACE FOR LEASE SQUIRES II OFFICE CENTER

16655 Bluemound Road - Brookfield, WI

**MATT FAHEY**

DIRECT: 414 278 6860

MOBILE: 773 910 2483

[matt.fahey@colliers.com](mailto:matt.fahey@colliers.com)

**SAL STREHLOW**

DIRECT: 414 278 6846

MOBILE: 414 467 4296

[sal.strehlow@colliers.com](mailto:sal.strehlow@colliers.com)



**COLLIERS INTERNATIONAL**  
833 E Michigan Street, Suite 500  
Milwaukee, WI 53202  
414 276 9500  
[www.colliers.com](http://www.colliers.com)

# FOR LEASE

## 16655 Bluemound Road - Brookfield, WI

### DETAILS

- Property Highlights:
- > Winner of the 2014 BOMA Best Renovated Building Award
  - > Building remodeled in 2012
  - > Free parking with generous parking ratio
  - > Excellent ingress/egress, near I-94
  - > Three blocks west of Brookfield Square Mall

Available Office Space: 13,835 SF

Building Size: 54,570 SF

Year Built: 1980: Renovated in 2012

Stories: 3

Parking: 4.73/1,000 SF

Lease Rate: \$17.00/SF Gross

### AVAILABILITY

Suite	Available Space
180	2,320 SF
200 *Available 6/1/2018	1,066 SF
240	2,043 SF
290	1,540 SF
301	1,836 SF
310	3,068 SF
330	1,962 SF
390	1,762 SF

\* Suites 301 & 310 Contiguous to 4,904 SF

\* Suites 200 & 209 Contiguous to 2,606 SF

\* Suites 330 & 390 Contiguous to 3,724 SF

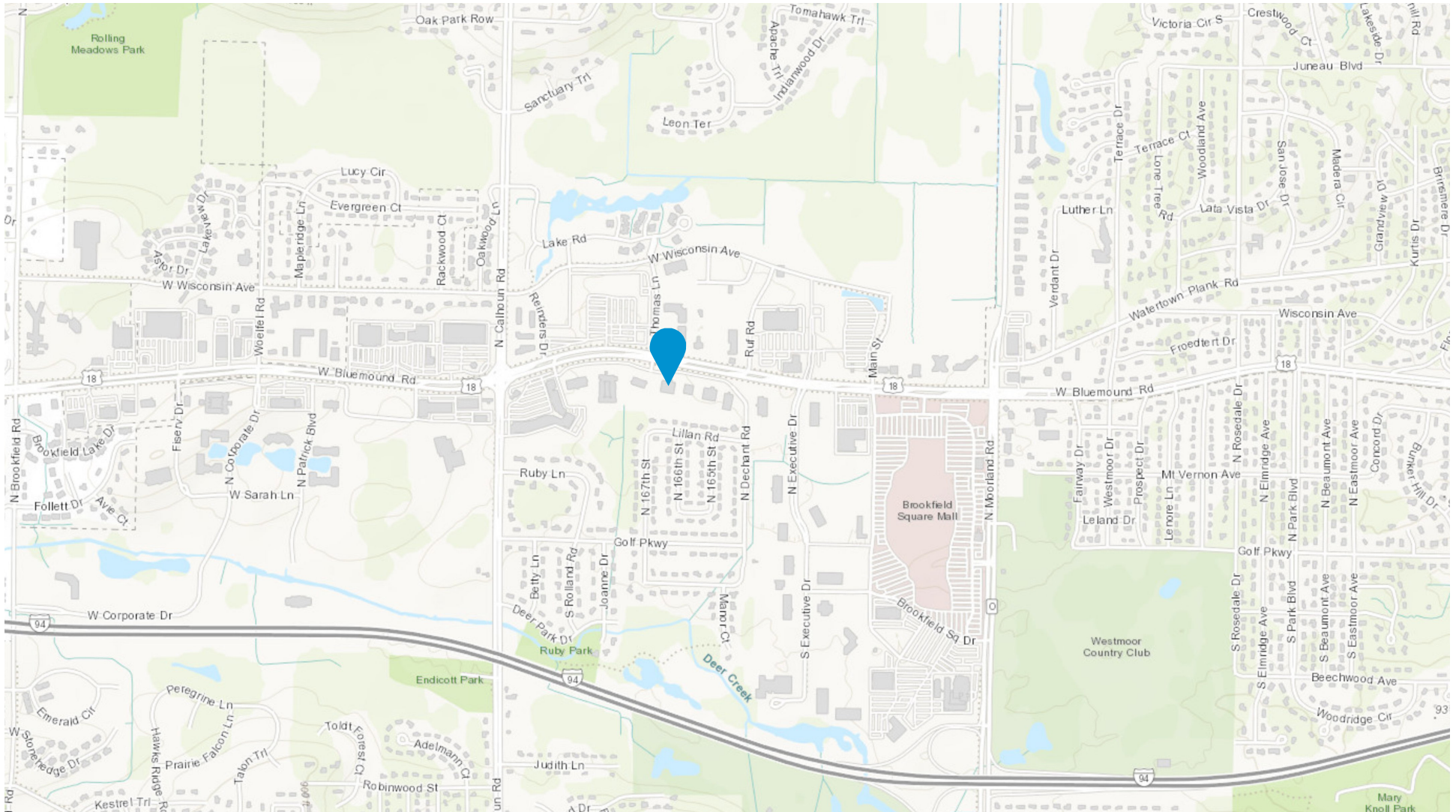




**FOR LEASE**

**16655 Bluemound Road - Brookfield, WI**

## LOCATION



**FOR LEASE**

16655 Bluemound Road - Brookfield, WI

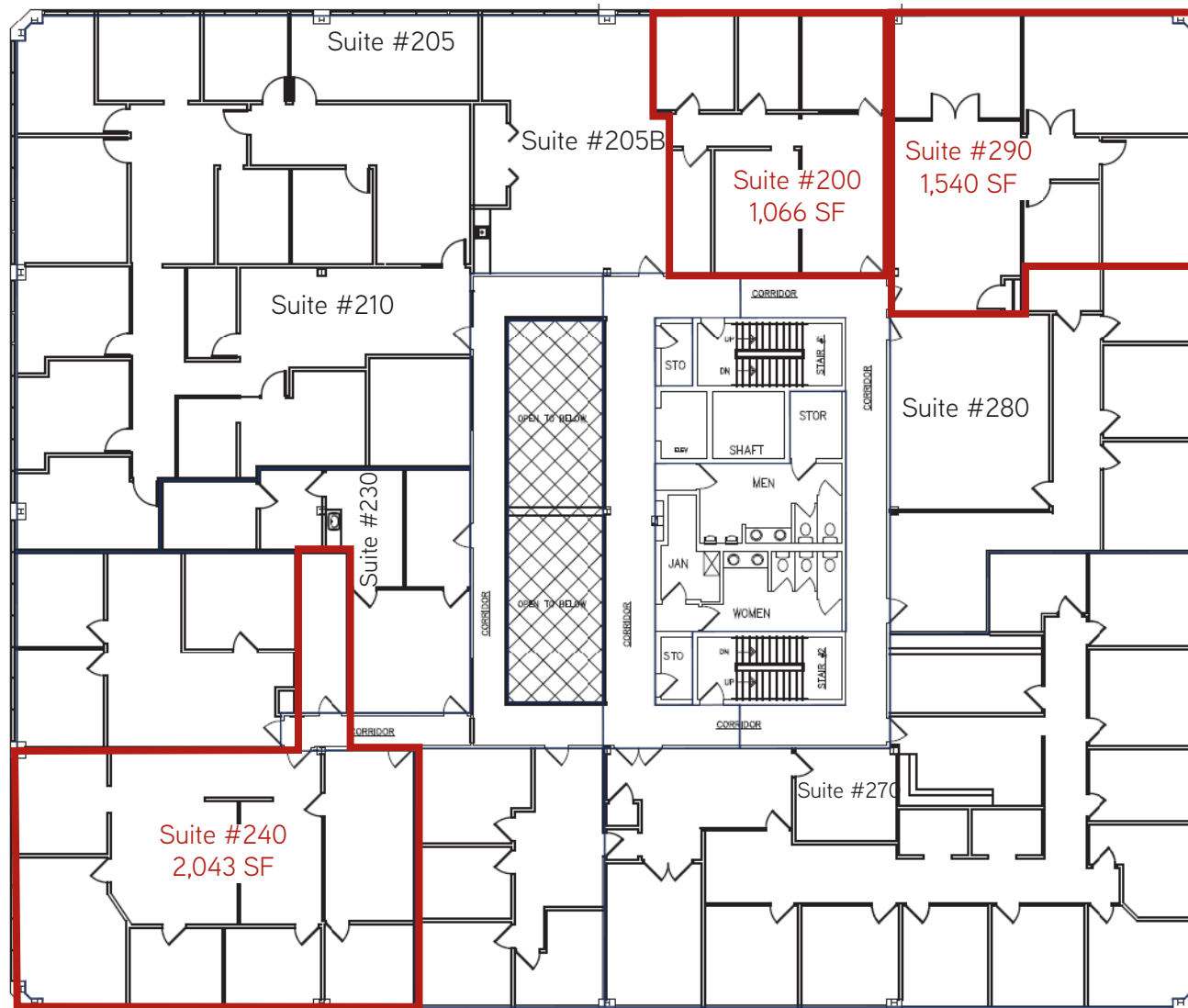
FLOOR PLAN - FIRST FLOOR



**FOR LEASE**

16655 Bluemound Road - Brookfield, WI

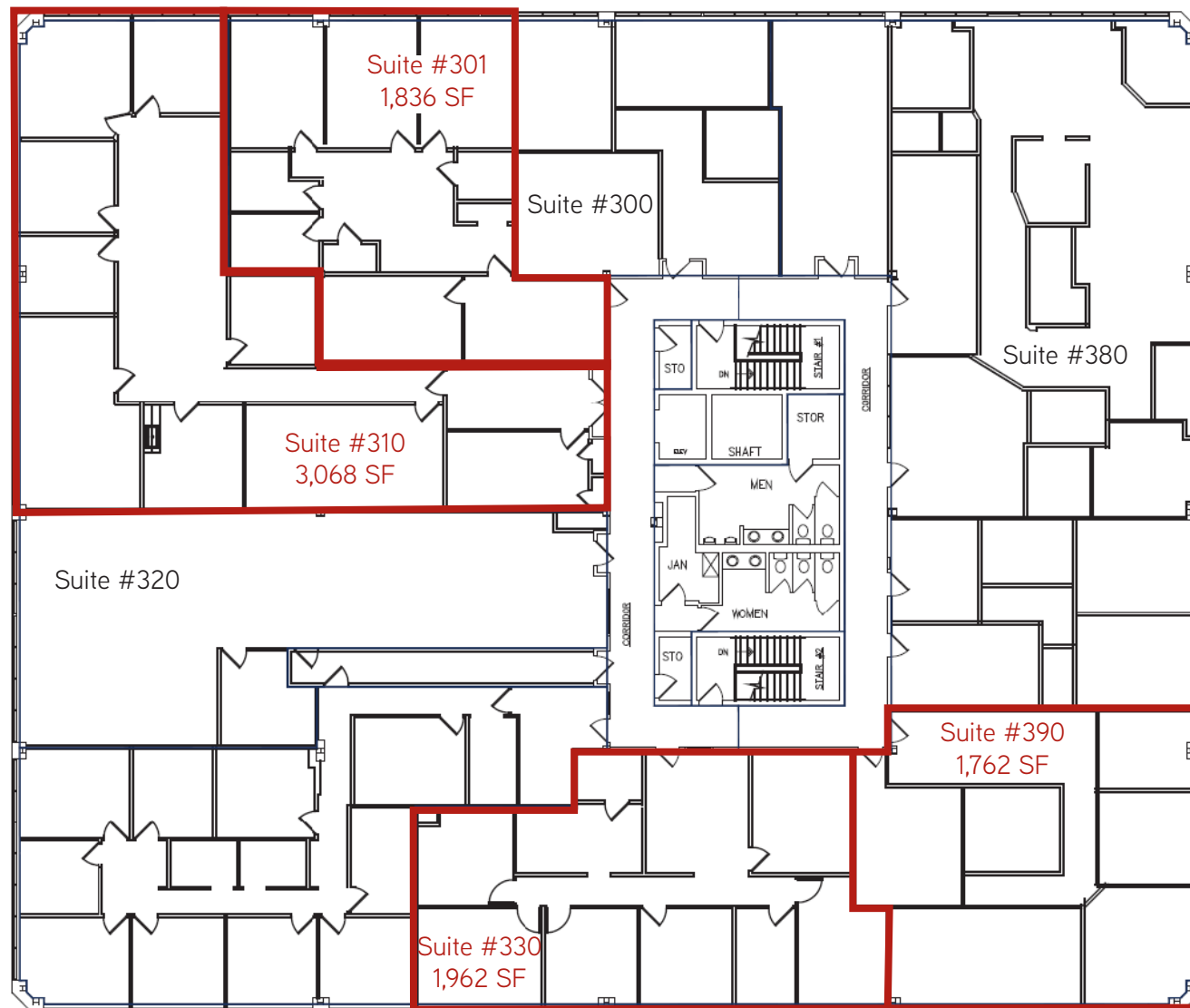
FLOOR PLAN - SECOND FLOOR



**FOR LEASE**

16655 Bluemound Road - Brookfield, WI

FLOOR PLAN - THIRD FLOOR



SQUIRES II  
16655



**COLLIERS INTERNATIONAL**  
833 E Michigan Street, Suite 500  
Milwaukee, WI 53202  
414 276 9500  
[www.colliers.com](http://www.colliers.com)

**SAL STREHLOW**  
DIRECT: 414 278 6846  
MOBILE: 414 467 4296  
[sal.strehlow@colliers.com](mailto:sal.strehlow@colliers.com)

**MATT FAHEY**  
DIRECT: 414 278 6860  
MOBILE: 773 910 2483  
[matt.fahey@colliers.com](mailto:matt.fahey@colliers.com)

This document/email has been prepared by Colliers International for advertising and general information only. Colliers International makes no guarantees, representations or warranties of any kind, expressed or implied, regarding the information including, but not limited to, warranties of content, accuracy and reliability. Any interested party should undertake their own inquiries as to the accuracy of the information. Colliers International excludes unequivocally all inferred or implied terms, conditions and warranties arising out of this document and excludes all liability for loss and damages arising there from. This publication is the copyrighted property of Colliers International and /or its licensor(s). © 2016. All rights reserved. This communication is not intended to cause or induce breach of an existing listing agreement.