

# FOR SALE - REDUCED PRICE!! TURN-KEY RESTAURANT SPACE

1501 NORMA STREET, RIDGECREST, CA 93555



AGENT: JOHN HALE  
SENIOR VICE PRESIDENT | PRINCIPAL  
CENTRAL CALIFORNIA  
RETAIL PROPERTIES TEAM  
DIR 661 631 3815  
LICENSE NUMBER 0870084  
[john.hale@colliers.com](mailto:john.hale@colliers.com)

AGENT: STEPHEN HALE  
ASSOCIATE  
CENTRAL CALIFORNIA  
RETAIL PROPERTIES TEAM  
DIR 661 631 3820  
LICENSE NUMBER 01997969  
[stephen.hale@colliers.com](mailto:stephen.hale@colliers.com)

AGENT: KEVIN HALE  
ASSOCIATE  
CENTRAL CALIFORNIA  
RETAIL PROPERTIES TEAM  
DIR 661 631 3825  
LICENSE NUMBER 02044018  
[kevin.hale@colliers.com](mailto:kevin.hale@colliers.com)

COLLIERS INTERNATIONAL  
10000 Stockdale Highway, Suite 102  
Bakersfield, CA 93311  
661 631 3800  
[www.colliers.com/bakersfield](http://www.colliers.com/bakersfield)





# FOR SALE - REDUCED PRICE!!

## TURN-KEY RESTAURANT SPACE

### PROPERTY INFORMATION

1501 N. NORMA STREET, RIDGECREST, CA 93555

**1501 N. Norma Street** is an approximately 8,635 square foot fully fixtured restaurant building situated on 0.91 acres of land zoned CG (General Commercial) in the City of Ridgecrest. The property sits on N. Norma Street, one of the main north/south thoroughfares of the City. The subject enjoys proximity to residential housing, Sierra Vista Shopping Center, the Naval Air Weapons China Lake Base, and the Ridgecrest Regional Hospital. The property also benefits from excellent visibility and signage, while being easily accessible from both N. Norma Street and W. Graaf Avenue.

### HIGHLIGHTS

- › Turn-key restaurant building
- › Close proximity to residential housing, Naval Base, and Regional Hospital
- › Added Banquet Hall-one of the only fully functional banquet halls in the City
- › Zoned CG (General Commercial)
- › APN: 418-110-04
- › Traffic Counts: 9,429 AADT [www.kerncog.com](http://www.kerncog.com) 2007 Estimates

### SALE PRICE

~~\$1,365,000 (\$158.05/SF)~~

**REDUCED PRICE: \$1,215,000 (\$140.70/SF)**

### DEMOGRAPHICS

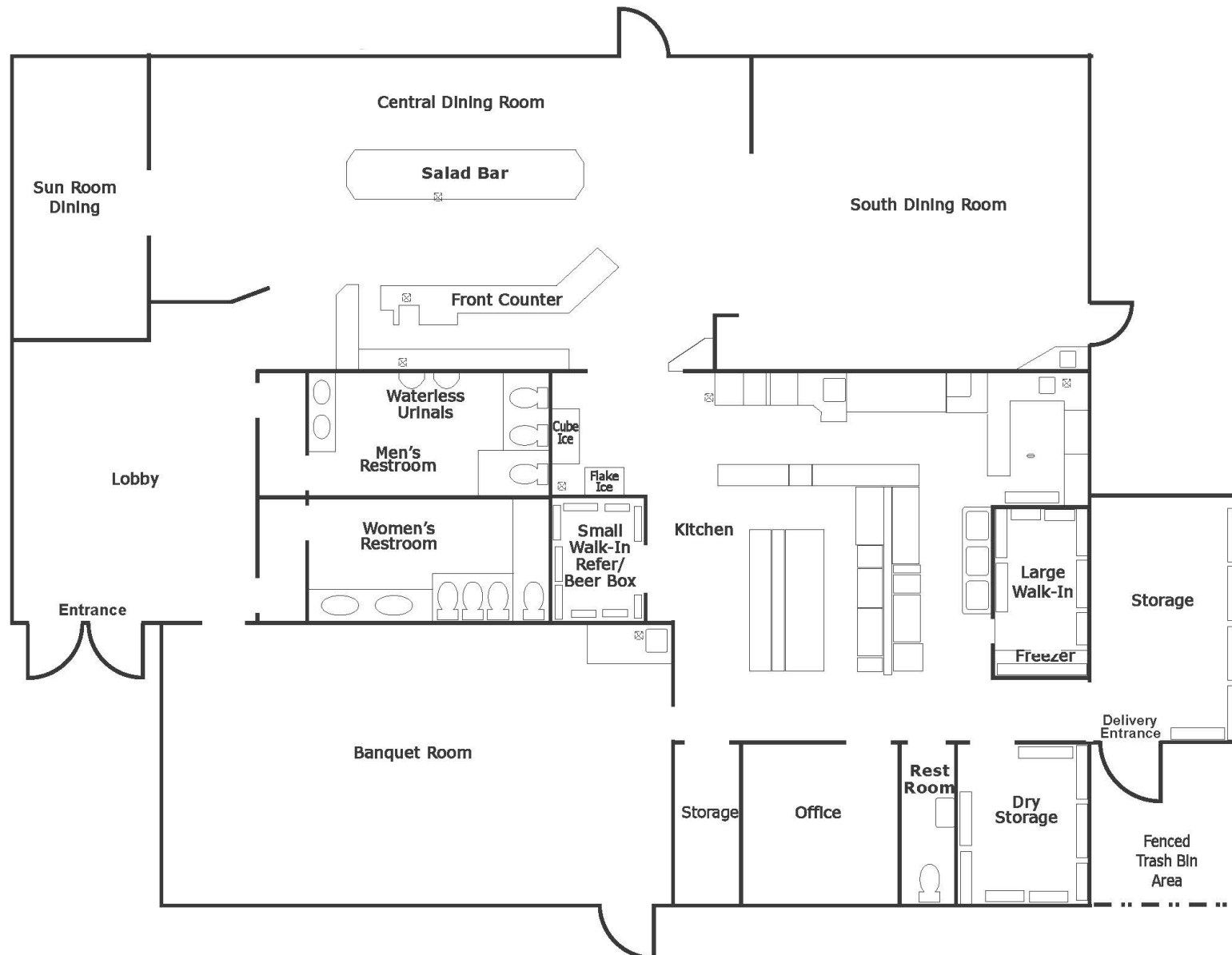
	1 MILE	3 MILE	5 MILE
TOTAL POPULATION	6,868	26,925	33,320
TOTAL HOUSEHOLDS	3,005	10,675	13,242
AVERAGE HH INCOME	\$80,052	\$72,901	\$75,461
POPULATION MEDIAN AGE	40.4	34.4	36.1

ALTERYX.COM 2017 ESTIMATES



# FOR SALE - REDUCED PRICE!! TURN-KEY RESTAURANT SPACE FLOOR PLAN

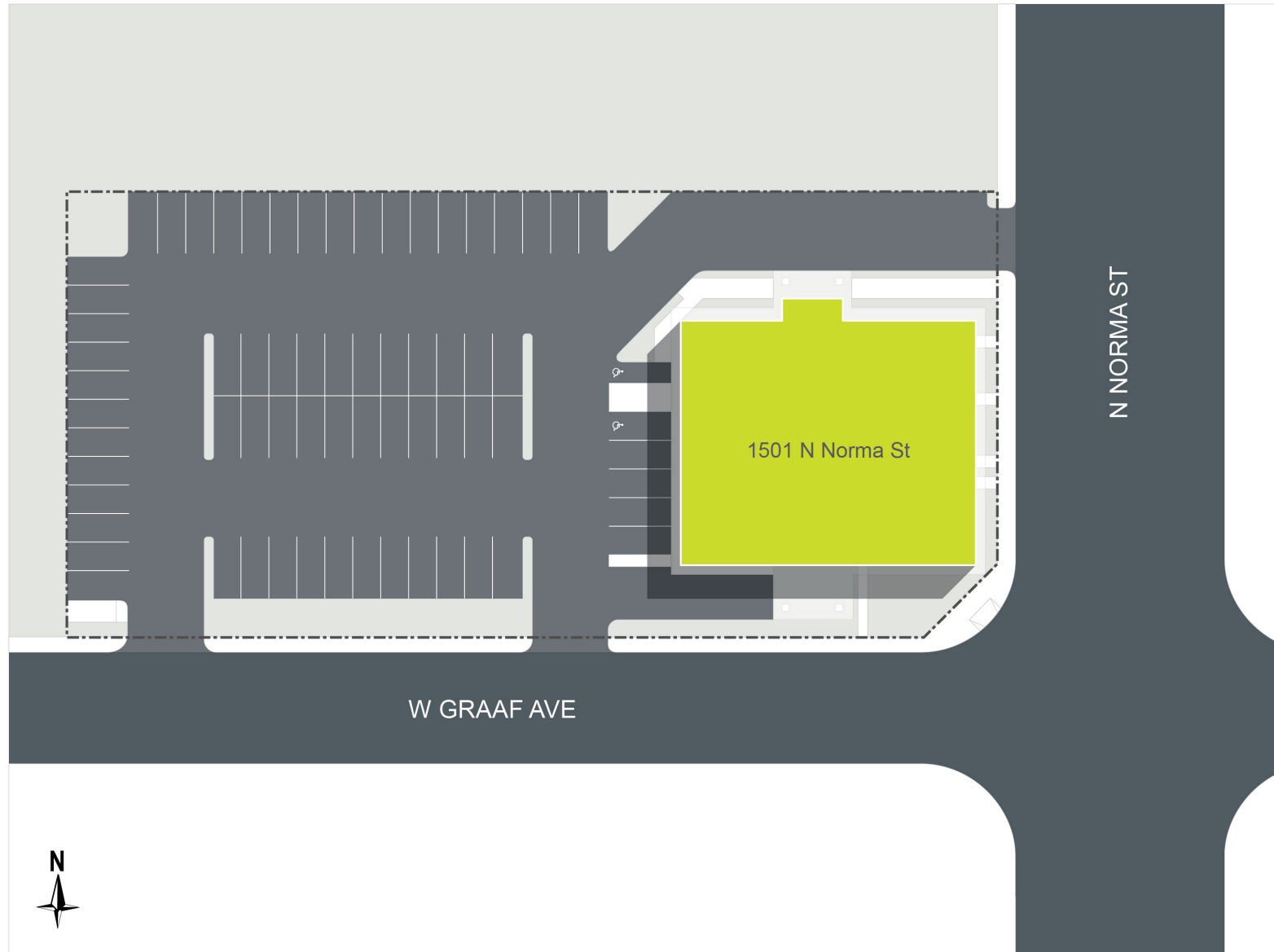
1501 N. NORMA STREET, RIDGECREST, CA 93555



\*Disclaimer –the information herein is provided at your request and no representation is made as to its accuracy. We strongly recommend that you field check the space prior to relying on any information related to the plans.

# FOR SALE - REDUCED PRICE!! TURN-KEY RESTAURANT SPACE SITE PLAN

1501 N. NORMA STREET, RIDGECREST, CA 93555



\*Disclaimer –the information herein is provided at your request and no representation is made as to its accuracy.  
We strongly recommend that you field check the space prior to relying on any information related to the plans.



# FOR SALE - REDUCED PRICE!! TURN-KEY RESTAURANT SPACE AERIAL

1501 N. NORMA STREET, RIDGECREST, CA 93555

## CONTACT US

JOHN HALE  
SENIOR VICE PRESIDENT | PRINCIPAL  
RETAIL PROPERTIES TEAM  
CENTRAL CALIFORNIA  
LICENSE NUMBER 0870084  
DIR 661 631 3815  
[john.hale@colliers.com](mailto:john.hale@colliers.com)

STEPHEN HALE  
ASSOCIATE  
RETAIL PROPERTIES TEAM  
CENTRAL CALIFORNIA  
LICENSE NUMBER 01997969  
661 631 3820  
[stephen.hale@colliers.com](mailto:stephen.hale@colliers.com)

KEVIN HALE  
ASSOCIATE  
RETAIL PROPERTIES TEAM  
CENTRAL CALIFORNIA  
LICENSE NUMBER 02044018  
DIR 661 631 3825  
[kevin.hale@colliers.com](mailto:kevin.hale@colliers.com)

COLLIERS INTERNATIONAL  
10000 Stockdale Highway, Suite 102  
Bakersfield, CA 93311  
[www.colliers.com/bakersfield](http://www.colliers.com/bakersfield)

