



# For Lease

## Westlake Corporate Park | Conway Bldg

10816 Executive Center Drive,  
Little Rock, AR 72211

GREG JOSLIN, CCIM, SIOR  
501 978 6581  
[greg.joslin@colliers.com](mailto:greg.joslin@colliers.com)

CLARK IRWIN, CCIM  
501 978 6588  
[clark.irwin@colliers.com](mailto:clark.irwin@colliers.com)



COLLIERS INTERNATIONAL  
1 Allied Dr, Suite 1500  
Little Rock, AR 72202  
501 372 6161  
[www.colliers.com/arkansas](http://www.colliers.com/arkansas)

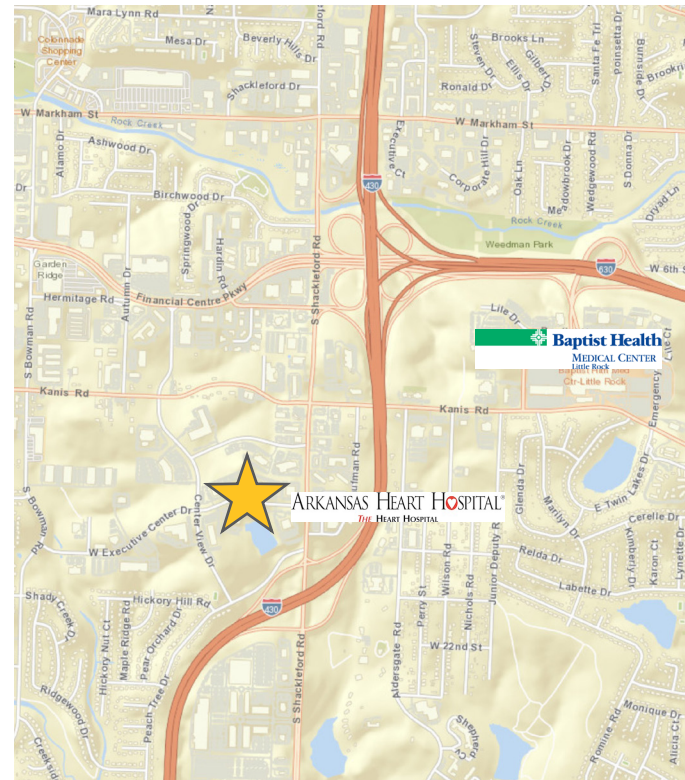
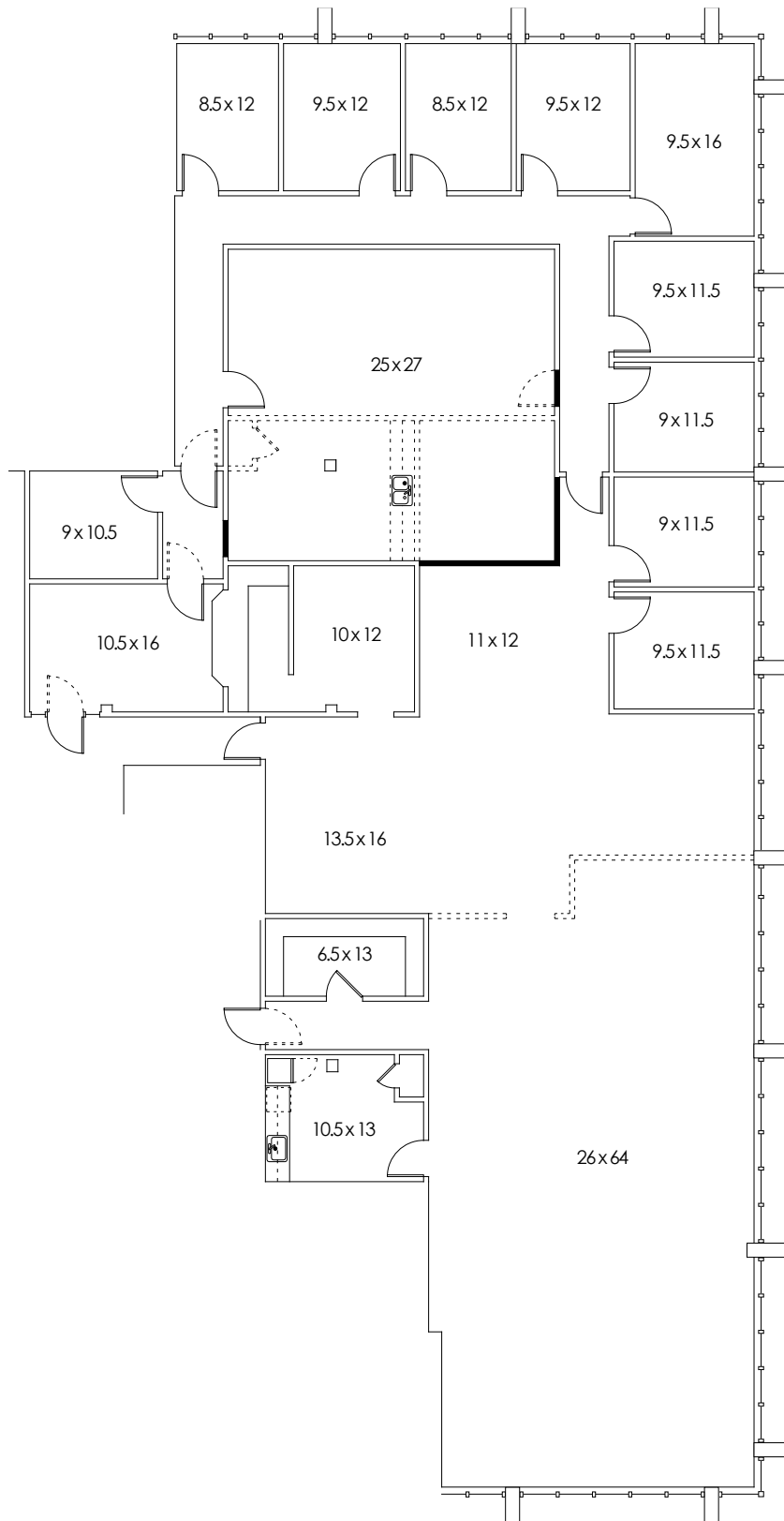
### KEY FEATURES/HIGHLIGHTS

- › Suite 206: approx. 6,084 SF
- › Can be combined with Suite 203 for 11,425 SF
- › Lease rate: \$19.75/SF, Full Service
- › Easily accessible west Little Rock location
- › Class "A" office park
- › Free parking and conference room facilities
- › Professional on-site management
- › On-site restaurant



# FOR LEASE > Class "A" Office Space

## SUITE 206 FLOOR PLAN



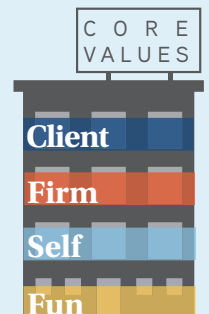
## CONTACT US

GREG JOSLIN, CCIM, SIOR  
501 978 6581  
[greg.joslin@colliers.com](mailto:greg.joslin@colliers.com)

CLARK IRWIN, CCIM  
501 978 6588  
[clark.irwin@colliers.com](mailto:clark.irwin@colliers.com)



**COLLIERS INTERNATIONAL**  
1 Allied Dr, Suite 1500  
Little Rock, AR 72202  
+1 501 372 6161  
[www.colliers.com/arkansas](http://www.colliers.com/arkansas)



This document has been prepared by Colliers International for advertising and general information only. Colliers International makes no guarantees, representations or warranties of any kind, expressed or implied, regarding the information including, but not limited to, warranties of content, accuracy and reliability. Any interested party should undertake their own inquiries as to the accuracy of the information. Colliers International excludes unequivocally all inferred or implied terms, conditions and warranties arising out of this document and excludes all liability for loss and damages arising therefrom. This publication is the copyrighted property of Colliers International and/or its licensor(s). ©2016. All rights reserved.