



For Lease

Westlake Corporate Park | Conway Bldg

10816 Executive Center Drive,
Little Rock, AR 72211

GREG JOSLIN, CCIM, SIOR
501 978 6581
greg.joslin@colliers.com

CLARK IRWIN, CCIM
501 978 6588
clark.irwin@colliers.com



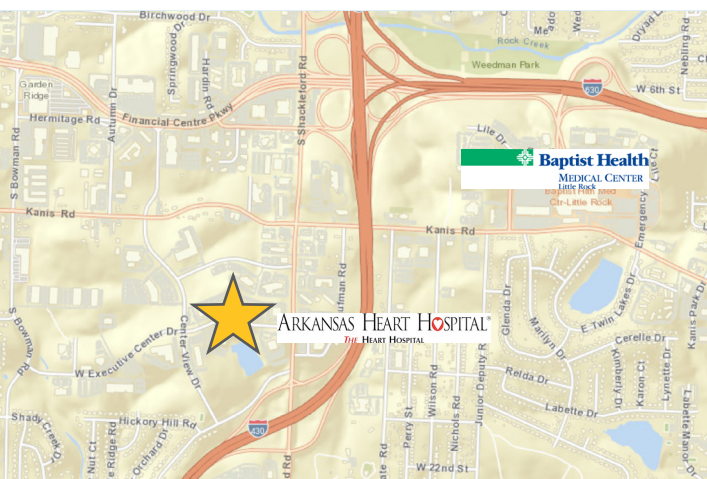
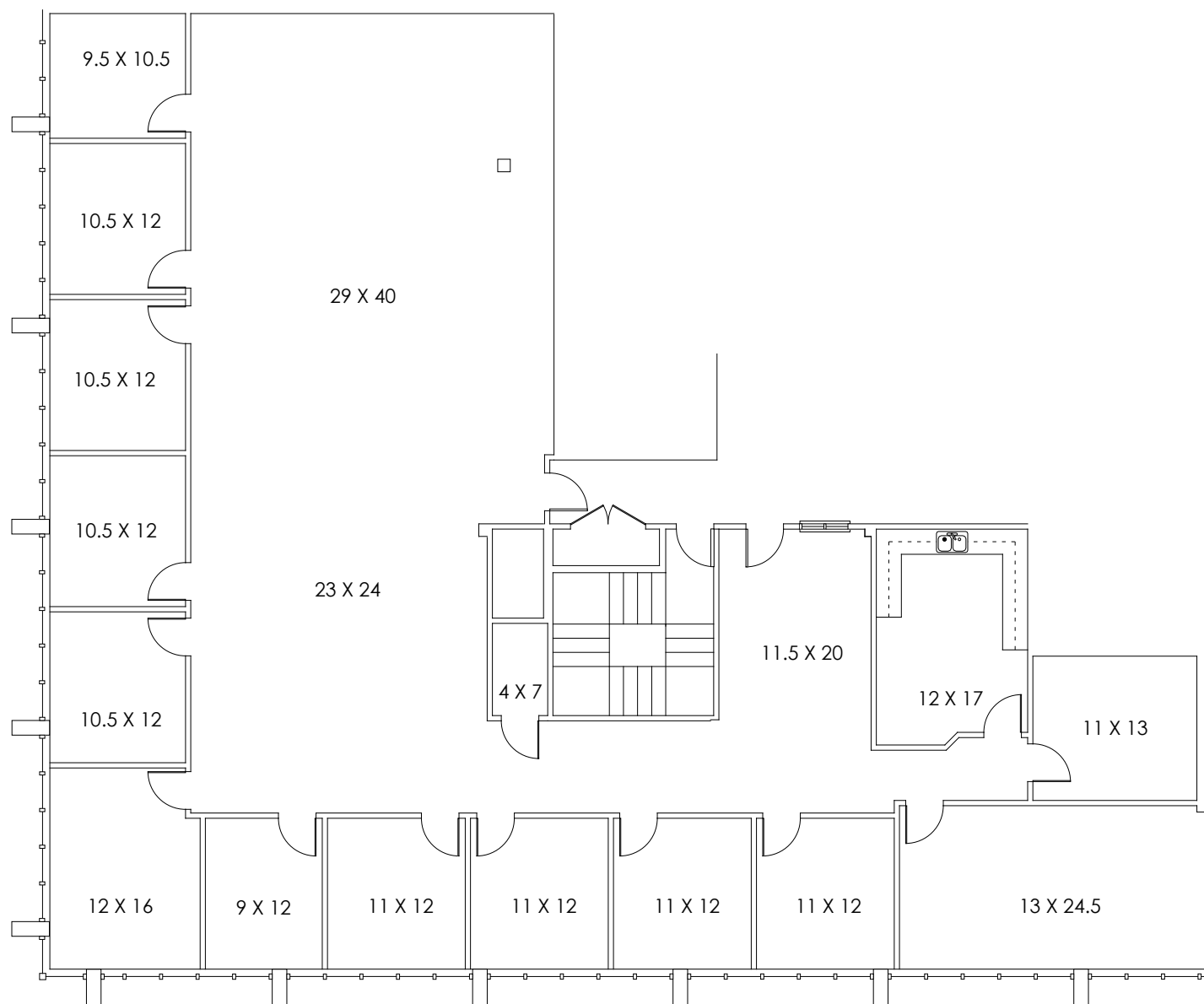
COLLIERS INTERNATIONAL
1 Allied Dr, Suite 1500
Little Rock, AR 72202
501 372 6161
www.colliers.com/arkansas

KEY FEATURES/HIGHLIGHTS

- › Suite 203: approx. 5,341 SF
- › Can be combined with Suite 206 for 11,425 SF
- › Lease rate: \$19.75/SF, Full Service
- › Easily accessible west Little Rock location
- › Class "A" office park
- › Free parking and conference room facilities
- › Professional on-site management
- › On-site restaurant

FOR LEASE > Class "A" Office Space

SUITE 203 FLOOR PLAN



CONTACT US

GREG JOSLIN, CCIM, SIOR
501 978 6581
greg.joslin@colliers.com

CLARK IRWIN, CCIM
501 978 6588
clark.irwin@colliers.com



COLLIERS INTERNATIONAL
1 Allied Dr, Suite 1500
Little Rock, AR 72202
+1 501 372 6161

www.colliers.com/arkansas

This document has been prepared by Colliers International for advertising and general information only. Colliers International makes no guarantees, representations or warranties of any kind, expressed or implied, regarding the information including, but not limited to, warranties of content, accuracy and reliability. Any interested party should undertake their own inquiries as to the accuracy of the information. Colliers International excludes unequivocally all inferred or implied terms, conditions and warranties arising out of this document and excludes all liability for loss and damages arising there from. This publication is the copyrighted property of Colliers International and/or its licensor(s). ©2016. All rights reserved.