

FOR LEASE >

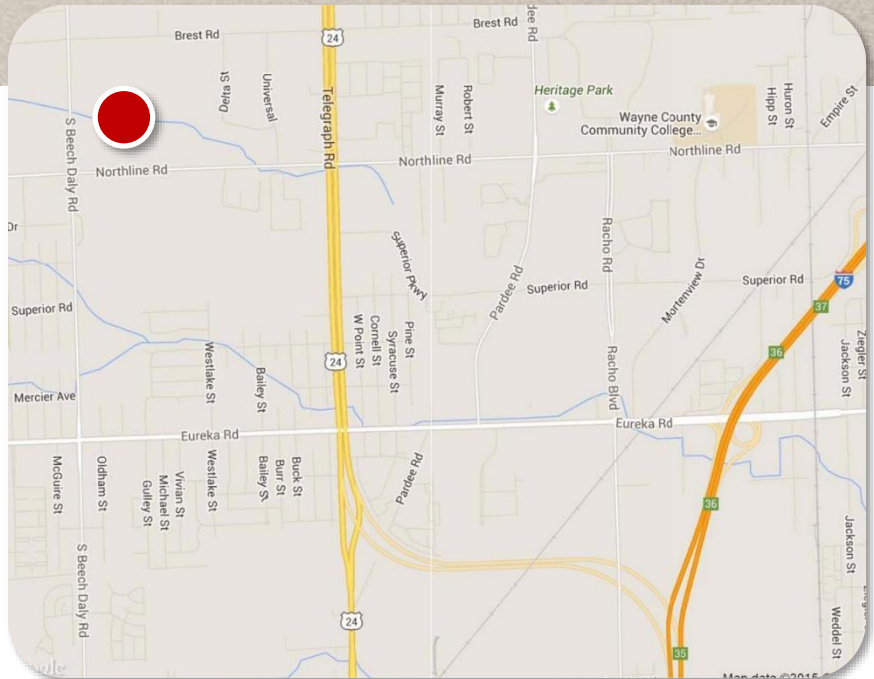
# Industrial Availability

25620 – 25698 NORTHLINE ROAD, TAYLOR, MICHIGAN



## Building Amenities

- > 20,000 Square Feet
- > 16,500 Square Feet
- > Minimal Office Space
- > 18' Clear Height
- > Truckwells (1 Per Unit)
- > Fire Suppression Throughout
- > Onsite Property Management
- > Well Maintained Complex



**JIM ROBERTS**  
248 540 1000 | Ext 1814  
Southfield, MI 48076  
j.roberts@colliers.com

**COLLIERS INTERNATIONAL**  
2 Corporate Drive, Suite 300  
Southfield, MI 48076  
www.colliers.com

FOR LEASE >

**Colliers**  
INTERNATIONAL

# Industrial Availability

25620 – 25698 NORTHLINE ROAD, TAYLOR, MICHIGAN



**COLLIERS INTERNATIONAL**  
2 Corporate Drive, Suite 300  
Southfield, MI 48076  
[www.colliers.com](http://www.colliers.com)

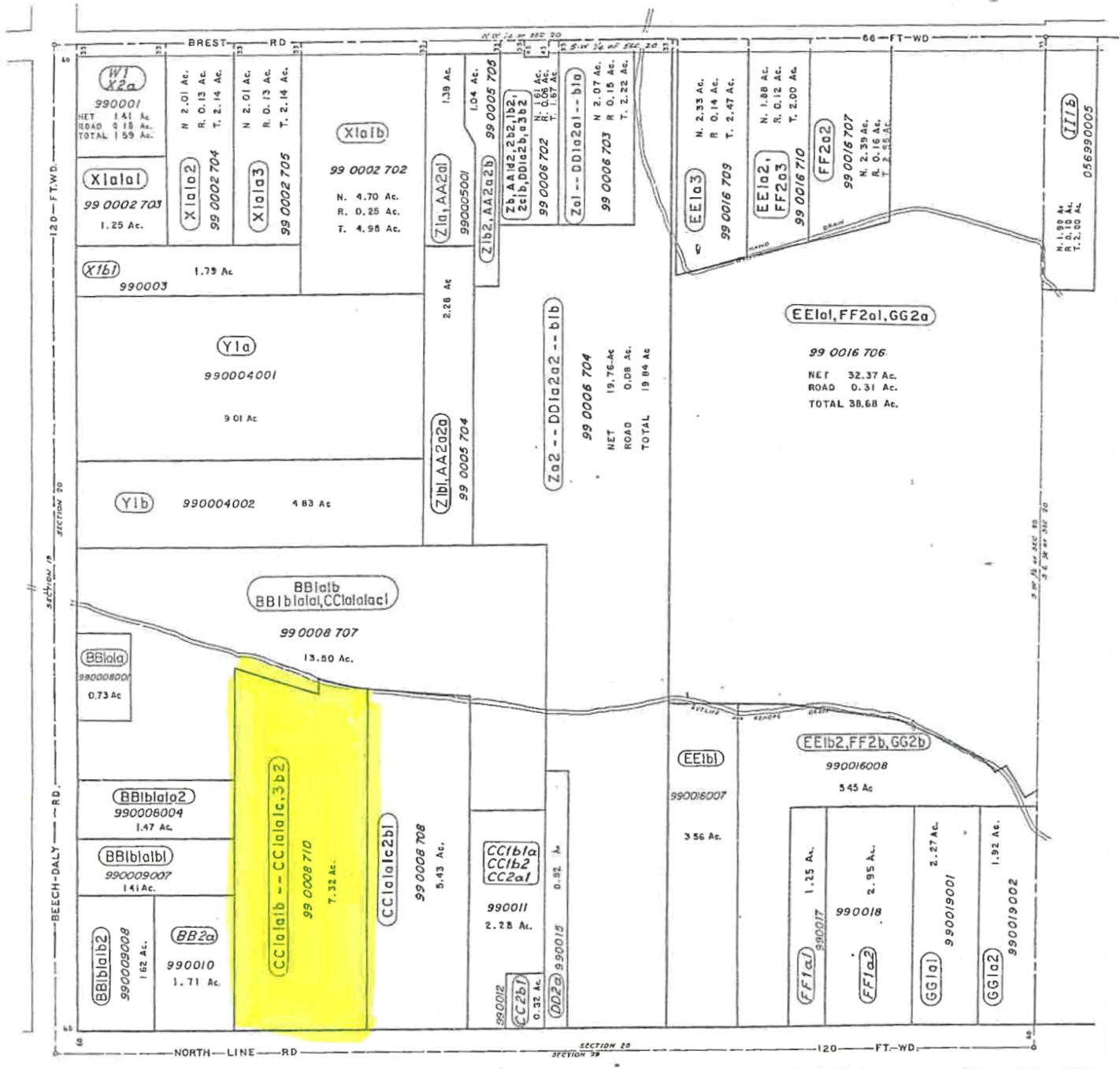


FOR LEASE >

# Industrial Availability



25620 – 25698 NORTHLINE ROAD, TAYLOR, MICHIGAN



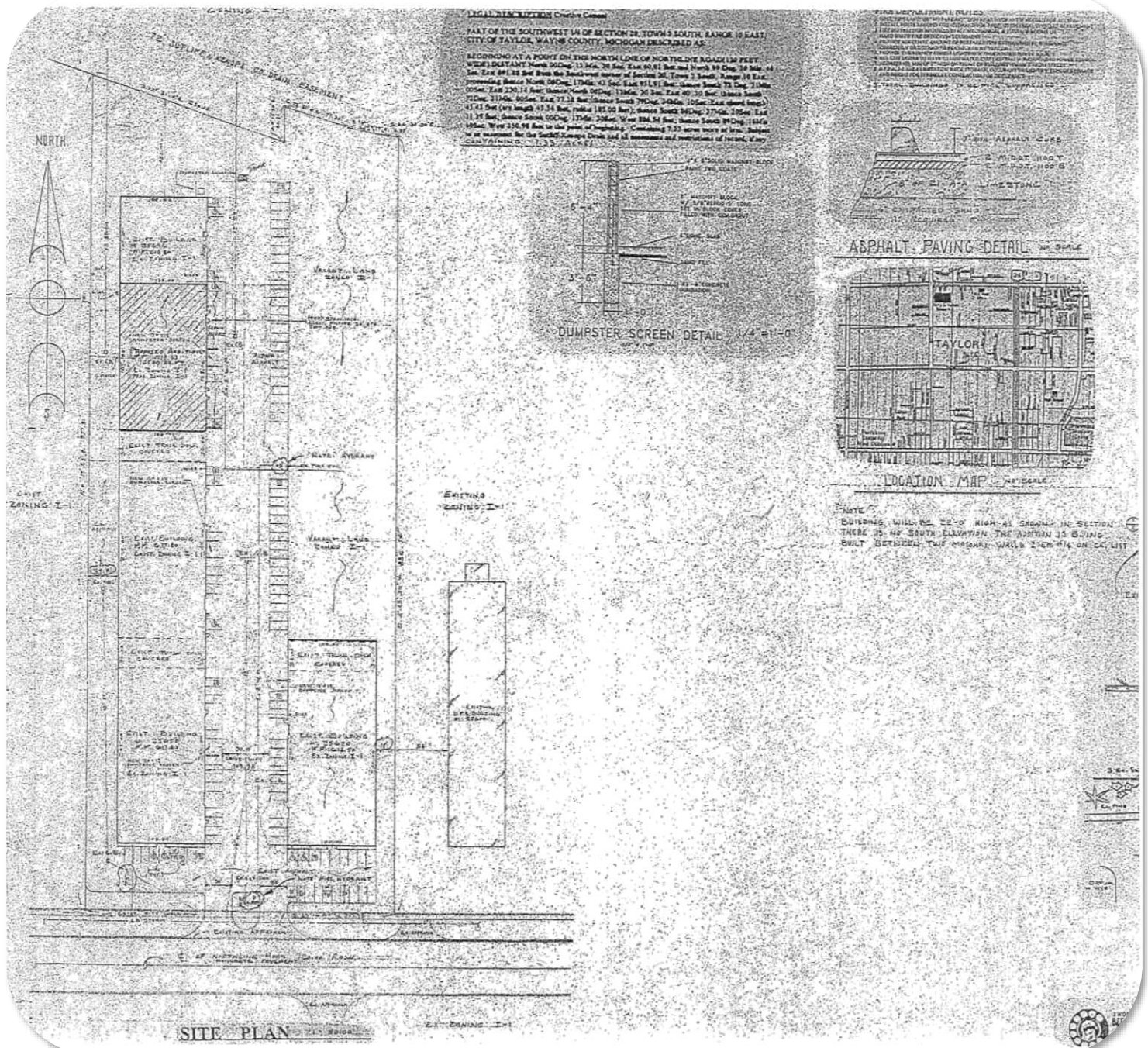


**FOR LEASE >**



## Industrial Availability

25620 - 25698 NORTHLINE ROAD, TAYLOR, MICHIGAN



**JIM ROBERTS**  
248 540 1000 | Ext 1814  
Southfield, MI 48076  
j.roberts@colliers.com

**COLLIERS INTERNATIONAL**  
2 Corporate Drive, Suite 300  
Southfield, MI 48076  
[www.colliers.com](http://www.colliers.com)



# Industrial Availability

## For Lease

25620 - 25698 Northline Road  
Taylor, MI 48180



Lease Rate :	\$4.25	NNN
Gross Sq Ft:	66,500	
Vacant Sq Ft:	36,500	
Min Available Sq Ft:	16,500	
Max Contiguous Sq Ft:	20,000	
Date Built/Renovated:	1992	
Property Taxes/Year:	\$82,063	
Property Taxes/SF:	\$0.95	
Parking:	Ample	

For more information, contact:



**Jim Roberts**

j.roberts@colliers.com

**(248) 540-1000**

2 Corporate Drive, Suite 300  
Southfield, MI 48076  
248 540 1000

400 E. Washington St.  
Ann Arbor, MI 48104  
734 994 3100

County: Wayne  
Crossroads: Northline Road/Beech Daly

20,000 Square Feet.  
16,500 Square Feet.  
7.32 Acre Site.  
Zoned Light Industrial.  
18' Clear Height.

Ceiling Ht: 18'  
Docks: (2)  
Cranes: None  
Underhook: N/A  
Fixtures: Metal Halide  
Power: 1,000A/240V/3-Phase  
Heating: Gas Fired/Radiant  
Buss Duct: No

Shop SF:	Office SF:
Shop Rate:	Office Rate:
Shop Dimensions:	

Acres:	7.32 Acres	Site Status:	Existing
Sub-Type:	Whse/Mfg	Zoning:	Light Industrial

Construction:	Block & Steel	Roof:	Rubber Membrane
Multi-tenant:	Yes	Floors:	
Free-standing:	No	Sprinklers:	Yes

[www.colliers.com](http://www.colliers.com)

Colliers International has prepared this document/email for advertising or general information only. Information contained herein has been obtained from the owners or from other sources deemed reliable. We have no reason to doubt its accuracy but regret we cannot guarantee it. All properties subject to change or withdrawal without notice.