

FOR LEASE > ±11,000 SF CLASS A OFFICE SPACE

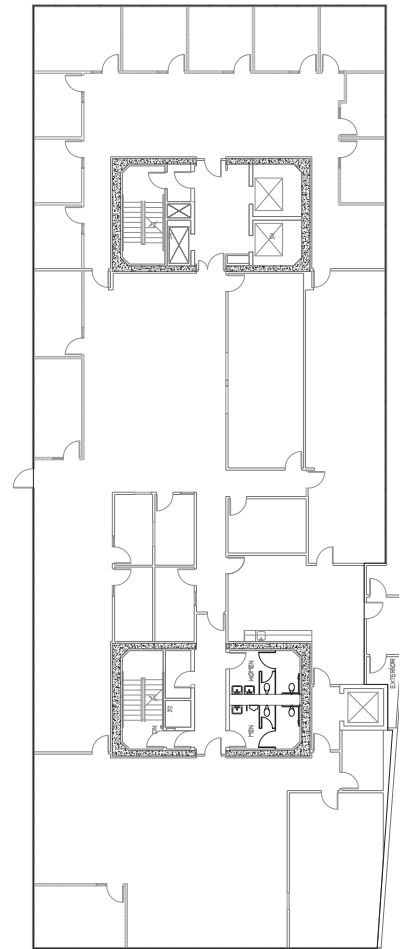
2150 Shattuck Avenue

BERKELEY, CA 94704



Property Description

- > **±11,000 SF - 3rd Floor**
- > Glassline on four sides
- > Mix of open and private offices
- > \$4.25 psf, full service
- > On site parking and security
- > Private deck



Contact

AILEEN DOLBY

+1 510 433 5815

aileen.dolby@colliers.com

CA License No. 00949630