

FOR SALE > 1.47 ACRES OF LAND



# Blue Valley Business Center

16050 - 16068 METCALF AVENUE, OVERLAND PARK, KANSAS



## Property Features

- > 1.47 acres for sale (63,870 SF)
- > Pad-ready
- > Excellent visibility and access to Metcalf Avenue
- > Ideal for retail or medical user
- > Near the new highway interchange of 159th Street and 69 Highway
- > High growth area near Walmart, Price Chopper, Shawnee Mission Health Care, and anew Cosentino's Market

## Demographics

	1	3	5
Population	5,659	43,832	99,150
Median HHI	\$92,474	\$115,218	\$111,869

AGENT: KIMBERLY TRANBARGER  
+1 816 556 1183  
KANSAS CITY, MO  
kimberly.tranbarger@colliers.com

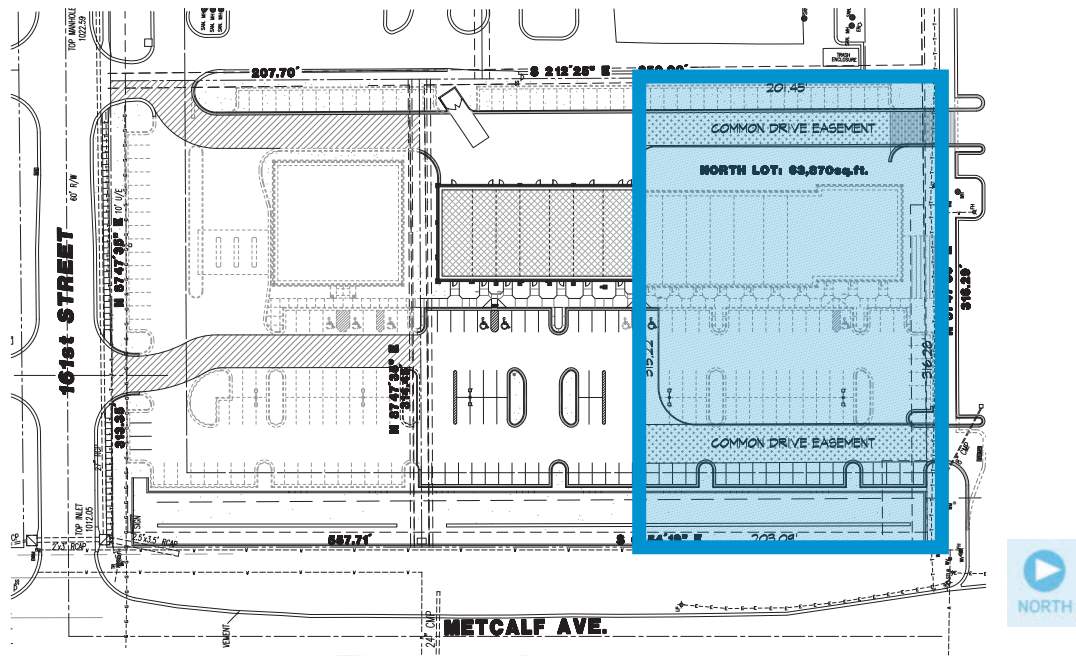
COLLIERS INTERNATIONAL  
4520 Main Street, Suite 1000  
Kansas City, MO 64111  
www.colliers.com



FOR SALE > 1.47 ACRES OF LAND

# Blue Valley Business Center

16050 - 16068 METCALF AVENUE, OVERLAND PARK, KANSAS



This document has been prepared by Colliers International for advertising and general information only. Colliers International makes no guarantees, representations or warranties of any kind, expressed or implied, regarding the information including, but not limited to, warranties of content, accuracy and reliability. Any interested party should undertake their own inquiries as to the accuracy of the information. Colliers International excludes unequivocally all inferred or implied terms, conditions and warranties arising out of this document and excludes all liability for loss and damages arising there from. This publication is the copyrighted property of Colliers International and/or its licensor(s). © 2016. All rights reserved.

