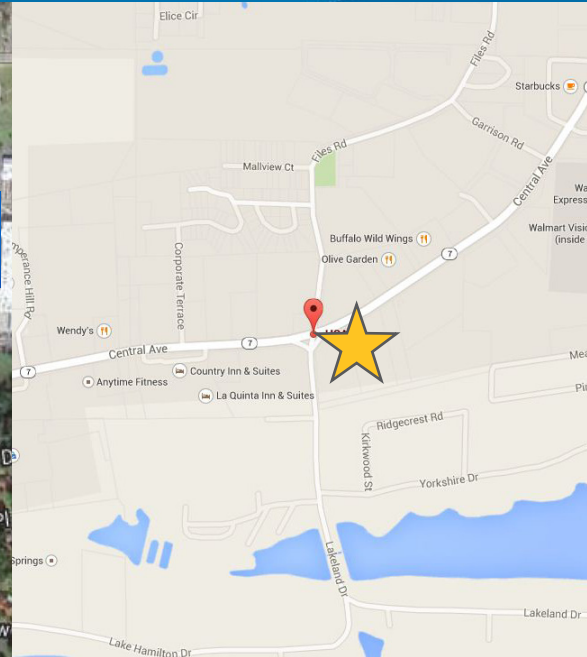


FOR SALE

Hot Springs Land



INTERSECTION OF CENTRAL AVE. & LAKELAND DR., HOT SPRINGS, AR 71913



Offering

Sale Price:

Lot 3 (3 acres) @ 8/SF

Information & Amenities

- > Good visibility on Central Avenue
- > ≈22,000 VPD on Central Avenue

Contact Us

LISTING AGENTS:

ISAAC SMITH, CCIM, SIOR
501 372 6161 | EXT. 736
LITTLE ROCK, AR
isaac.smith@colliers.com

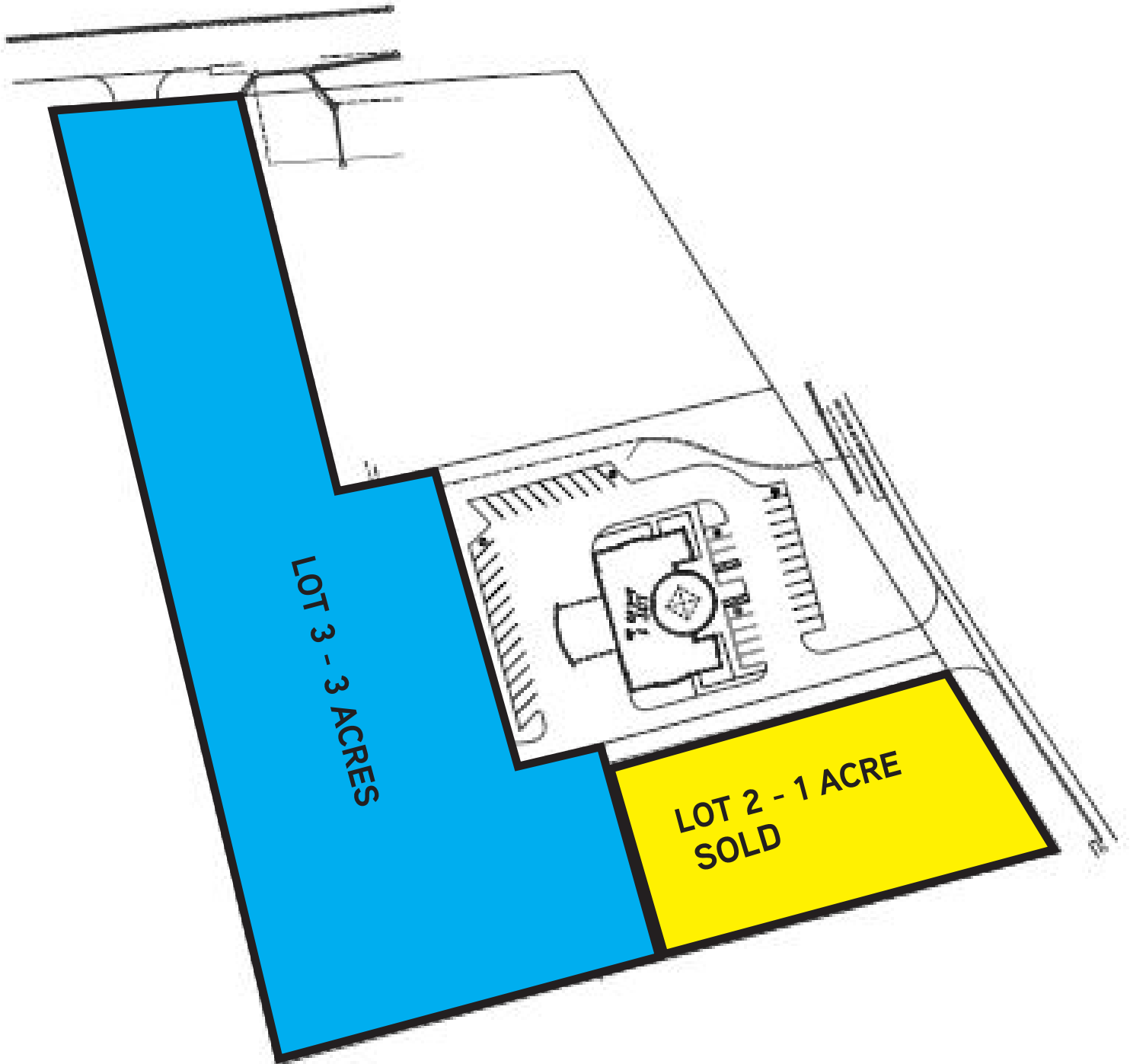
LEE STROTHER
501 372 6161 | EXT. 703
LITTLE ROCK, AR
lee.strother@colliers.com

2014	1 mile radius	3 mile radius	5 mile radius
Population	2,695	22,105	52,086
Total Households	1,483	10,090	22,818
Average Household Income	\$51,226	\$55,104	\$51,841

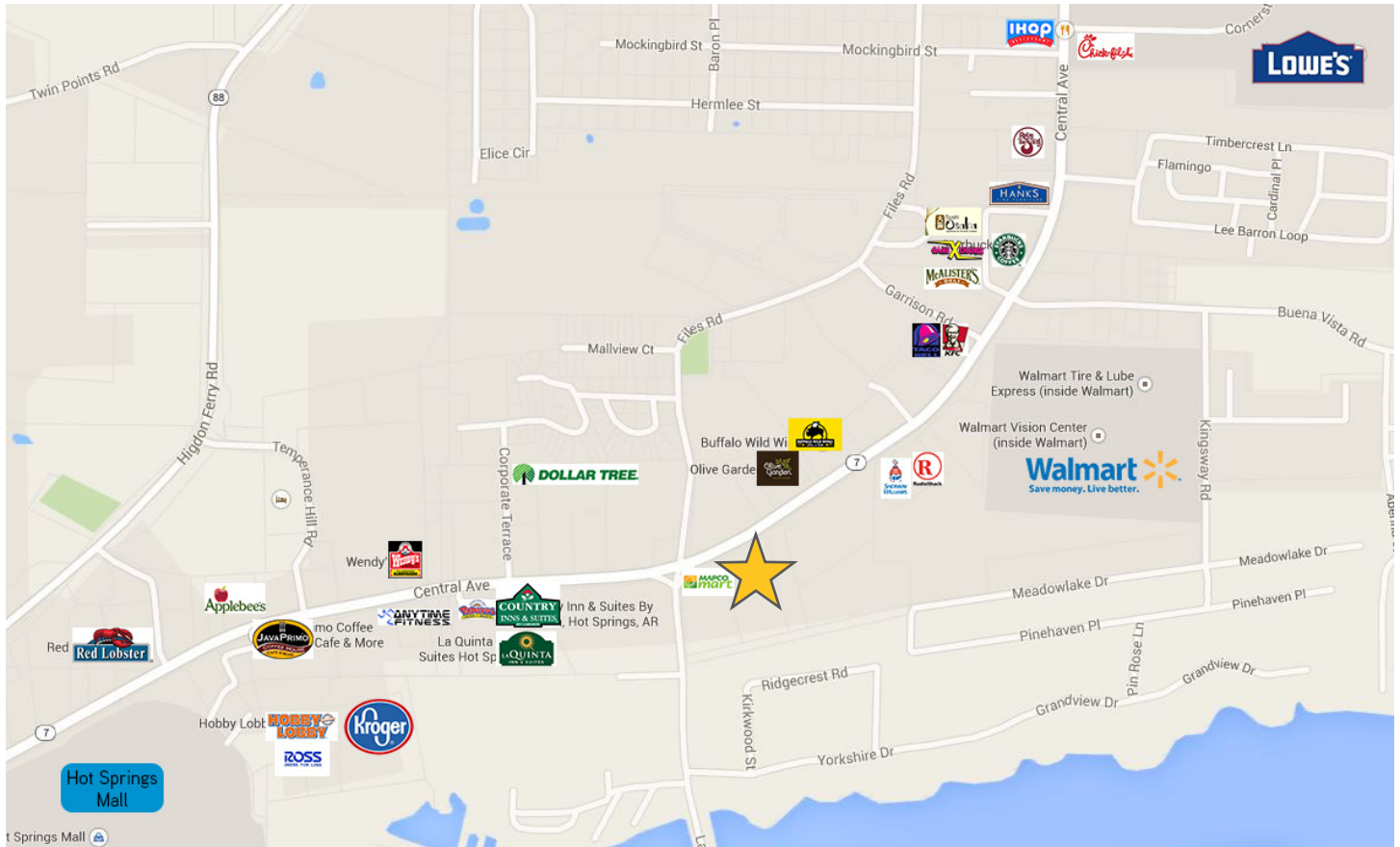
This document has been prepared by Colliers International for advertising and general information only. Colliers International makes no guarantees, representations or warranties of any kind, expressed or implied, regarding the information including, but not limited to, warranties of content, accuracy and reliability. Any interested party should undertake their own inquiries as to the accuracy of the information. Colliers International excludes unequivocally all inferred or implied terms, conditions and warranties arising out of this document and excludes all liability for loss and damages arising there from.

COLLIERS INTERNATIONAL
1 Allied Drive, Suite 1500
Little Rock, AR 72202
www.colliers.com/littlerock

Layout



Neighborhood Aerial



This document has been prepared by Colliers International for advertising and general information only. Colliers International makes no guarantees, representations or warranties of any kind, expressed or implied, regarding the information including, but not limited to, warranties of content, accuracy and reliability. Any interested party should undertake their own inquiries as to the accuracy of the information. Colliers International excludes unequivocally all inferred or implied terms, conditions and warranties arising out of this document and excludes all liability for loss and damages arising there from.