

PARKWAY POINT

WAREHOUSE/OFFICE FOR LEASE



8204

E. PARK MEADOWS DR.
SUITE B

LONE TREE, CO 80124



AVAILABILITY INFORMATION

AVAILABLE:	October 1, 2025
SIZE:	8,092 SF
OFFICE/SHOWROOM:	30%
BASE RENT:	\$14.75/SF NNN
2026 OPEX:	\$6.74/SF
MONTHLY RENT:	\$14,491.42
LOADING:	One (1) Drive-In Door
CLEAR HEIGHT:	13'
PARKING:	Uncovered, Surface

HIGHLIGHTS

- Parkway Point is a single story office, flex, R & D facility
- The flexible building design allows for a wide variety of uses and industry types
- Located across the street from Furniture Row with frontage, signage and visibility on Park Meadows Drive



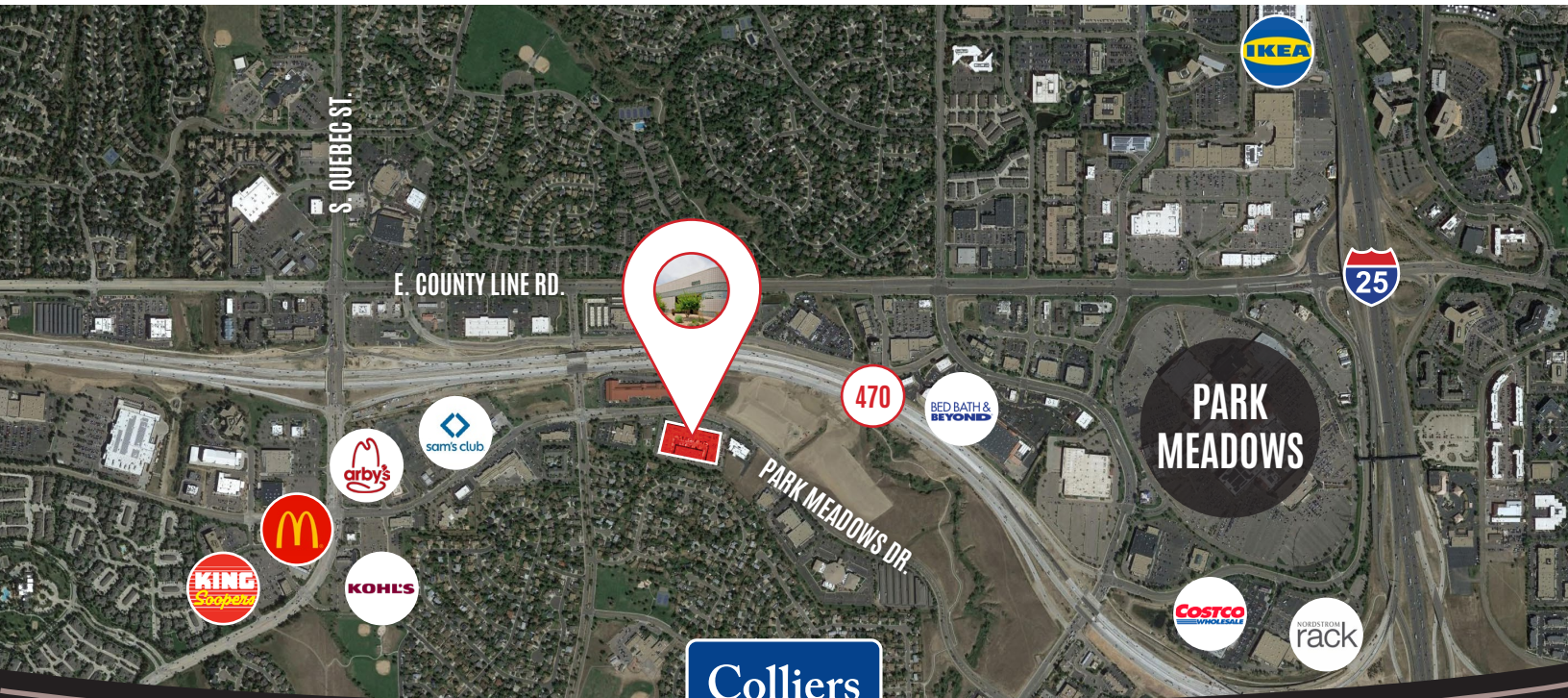
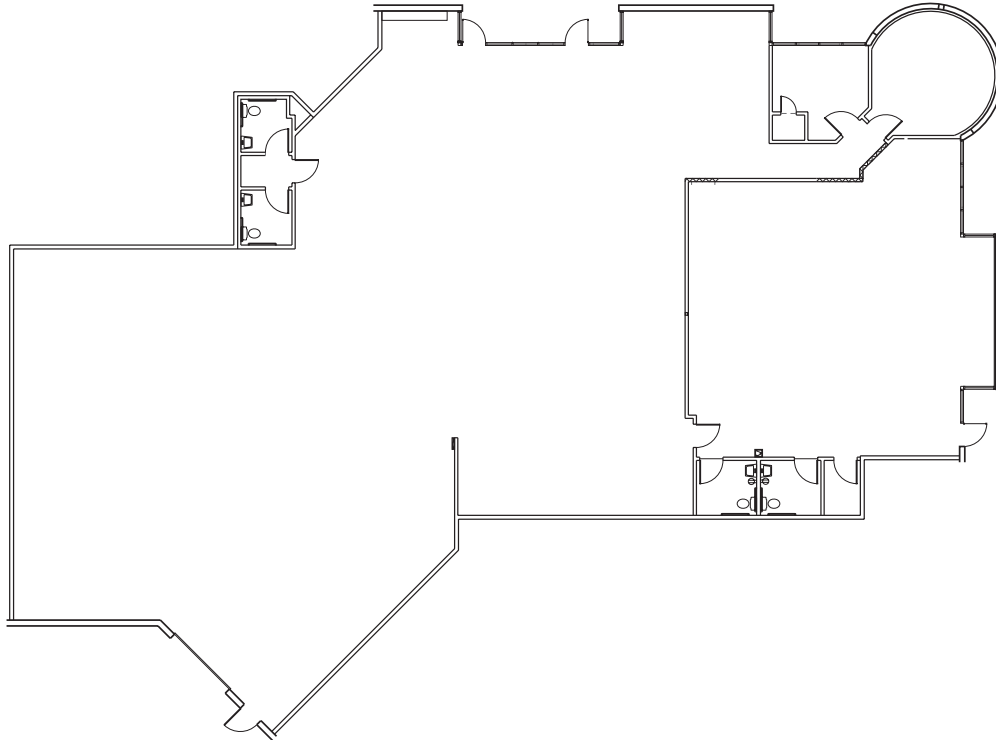
CODY SHEESLEY
+1 303 309 3520
cody.sheesley@colliers.com

T.J. SMITH, SIOR
+1 303 283 4576
tj.smith@colliers.com

NICK RICE, SIOR
+1 720 833 4620
nick.rice@colliers.com

8204 E. PARK MEADOWS DRIVE • SUITE B | LONE TREE, CO 80124

SITE PLAN



COLLIERS DENVER

4643 S. Ulster Street | Suite 1000 | Denver, CO 80237

+1 303 745 5800 fax +1 303 745 5888 | www.colliers.com/denver

No warranty or representation is made as to the accuracy of the foregoing information. Terms of sale or lease and availability are subject to change or withdrawal without notice.