

**FOR
LEASE**

RIVERPOINT BUILDING

390 E PARKCENTER BLVD | BOISE, ID



PROPERTY INFORMATION

Building Size:	25,400 SF
Land Size:	1.4 Acres
Parking:	Ample on-site
Zoning:	L-OD
Lease Type:	FSEJ

SPACE AVAILABLE

Suite	Size	Rate
125	±955 SF	\$18.00 PSF
140	±3,117 SF	\$18.00 PSF
150	±1,621 SF	\$18.00 PSF
200	±2,255 SF	\$18.00 PSF
250*	±7,037 SF	\$18.00 PSF

1st floor suites can be combined for ±2,576 – 5,693 SF

2nd floor suites can be combined for ±9,292 SF

*Available August 1, 2018 with 30 day notice

HIGHLIGHTS

- » Class A office space
- » Ideal location close to the Boise River and Greenbelt
- » Fiber to building
- » Free on-site parking
- » On-site locker rooms with showers
- » Surrounded by amenities and only minutes to Downtown Boise Core
- » Attractive tenant improvement packages available
- » Contact agent for showings

Colliers
INTERNATIONAL

JAMIE ANDERSON
208 472 2842
jamie.anderson@colliers.com

DAVID CADWELL
208 472 3857
david.cadwell@colliers.com

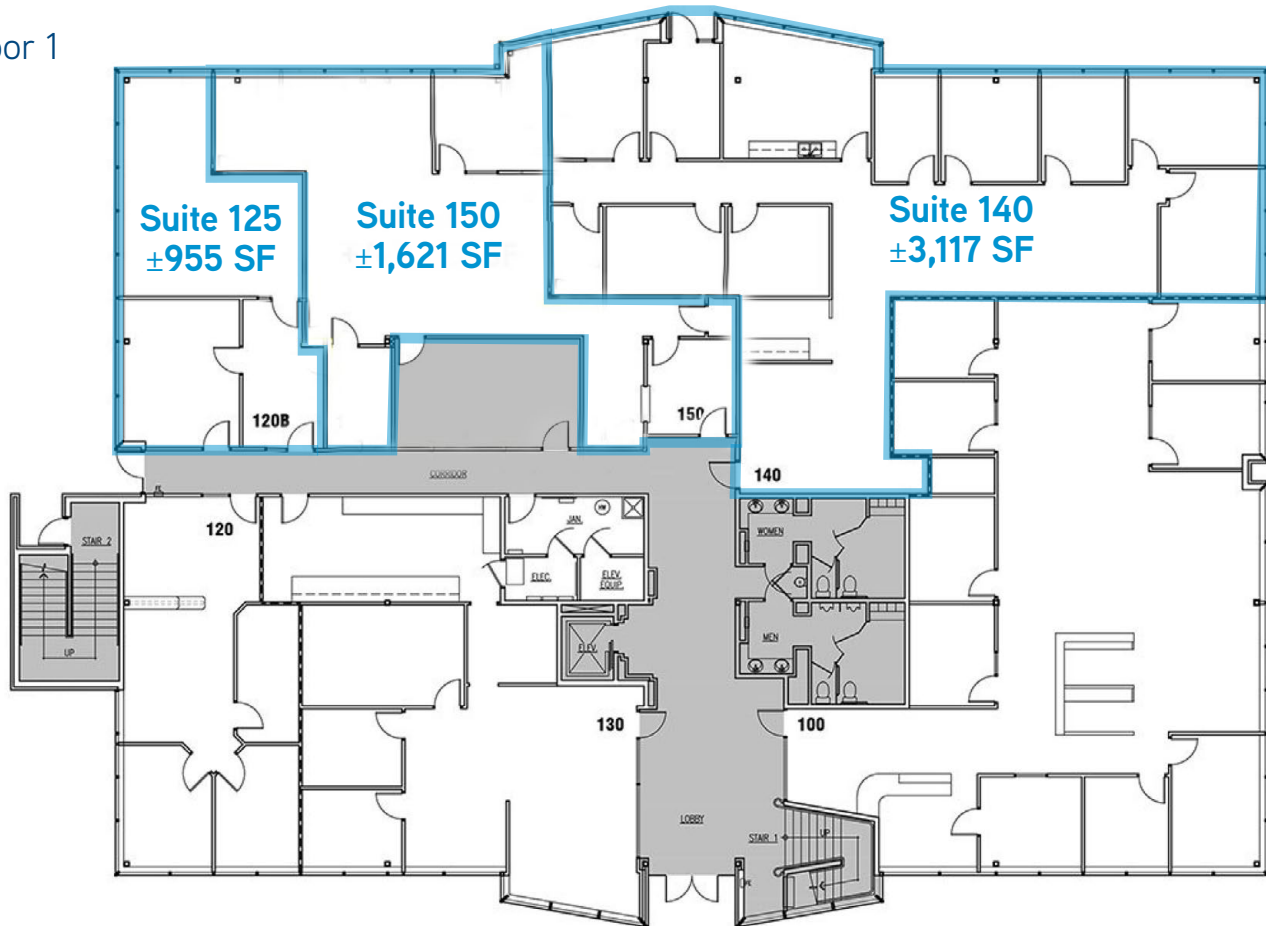
**FOR
LEASE**

RIVERPOINT BUILDING

390 E PARKCENTER BLVD | BOISE, ID

Colliers
INTERNATIONAL

Floor 1



JAMIE ANDERSON
208 472 2842
jamie.anderson@colliers.com

DAVID CADWELL
208 472 3857
david.cadwell@colliers.com

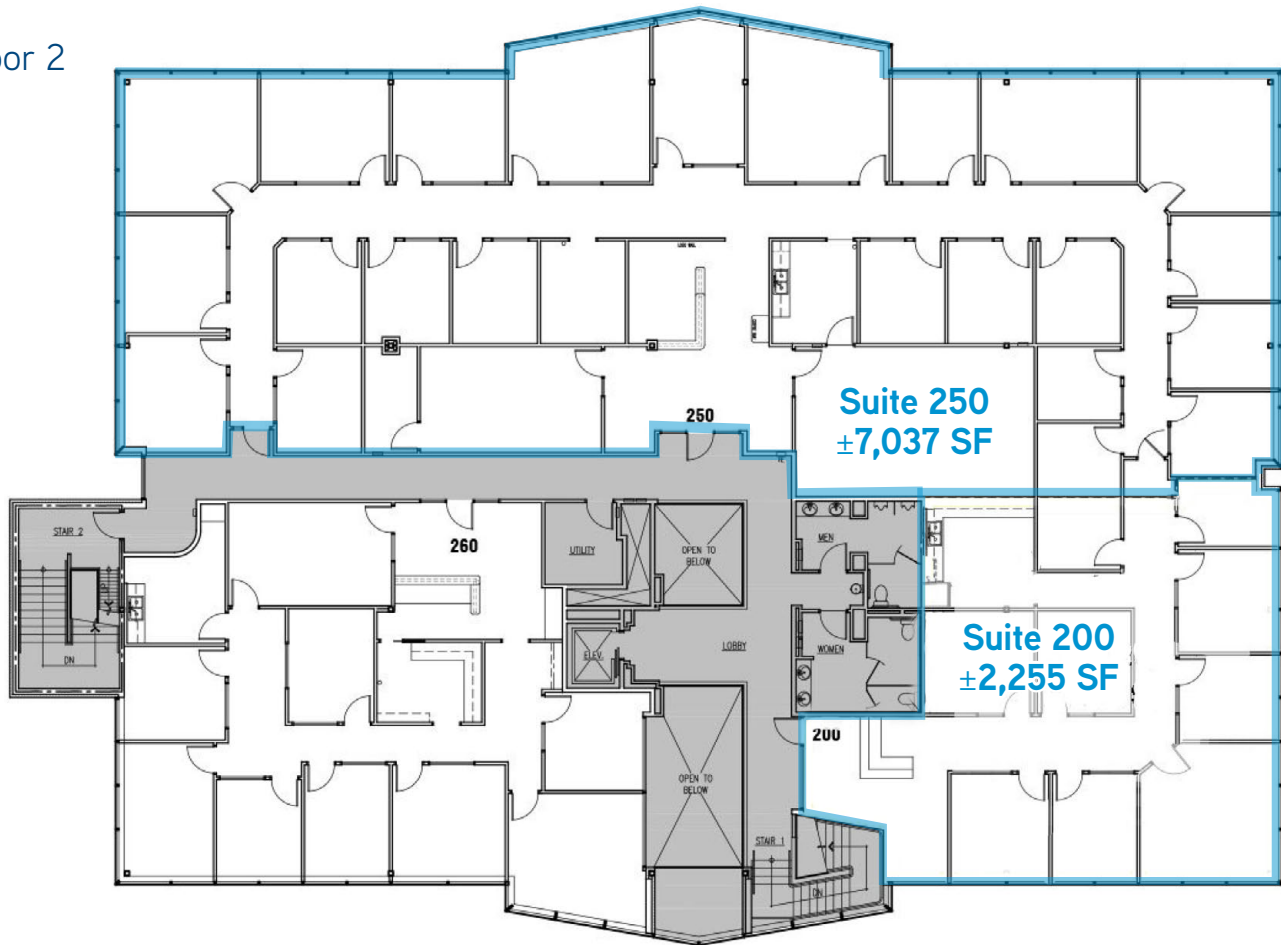
**FOR
LEASE**

RIVERPOINT BUILDING

390 E PARKCENTER BLVD | BOISE, ID

Colliers
INTERNATIONAL

Floor 2



JAMIE ANDERSON
208 472 2842
jamie.anderson@colliers.com

DAVID CADWELL
208 472 3857
david.cadwell@colliers.com

**FOR
LEASE**

RIVERPOINT BUILDING

390 E PARKCENTER BLVD | BOISE, ID

Colliers
INTERNATIONAL



JAMIE ANDERSON
208 472 2842
jamie.anderson@colliers.com

DAVID CADWELL
208 472 3857
david.cadwell@colliers.com