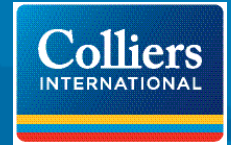
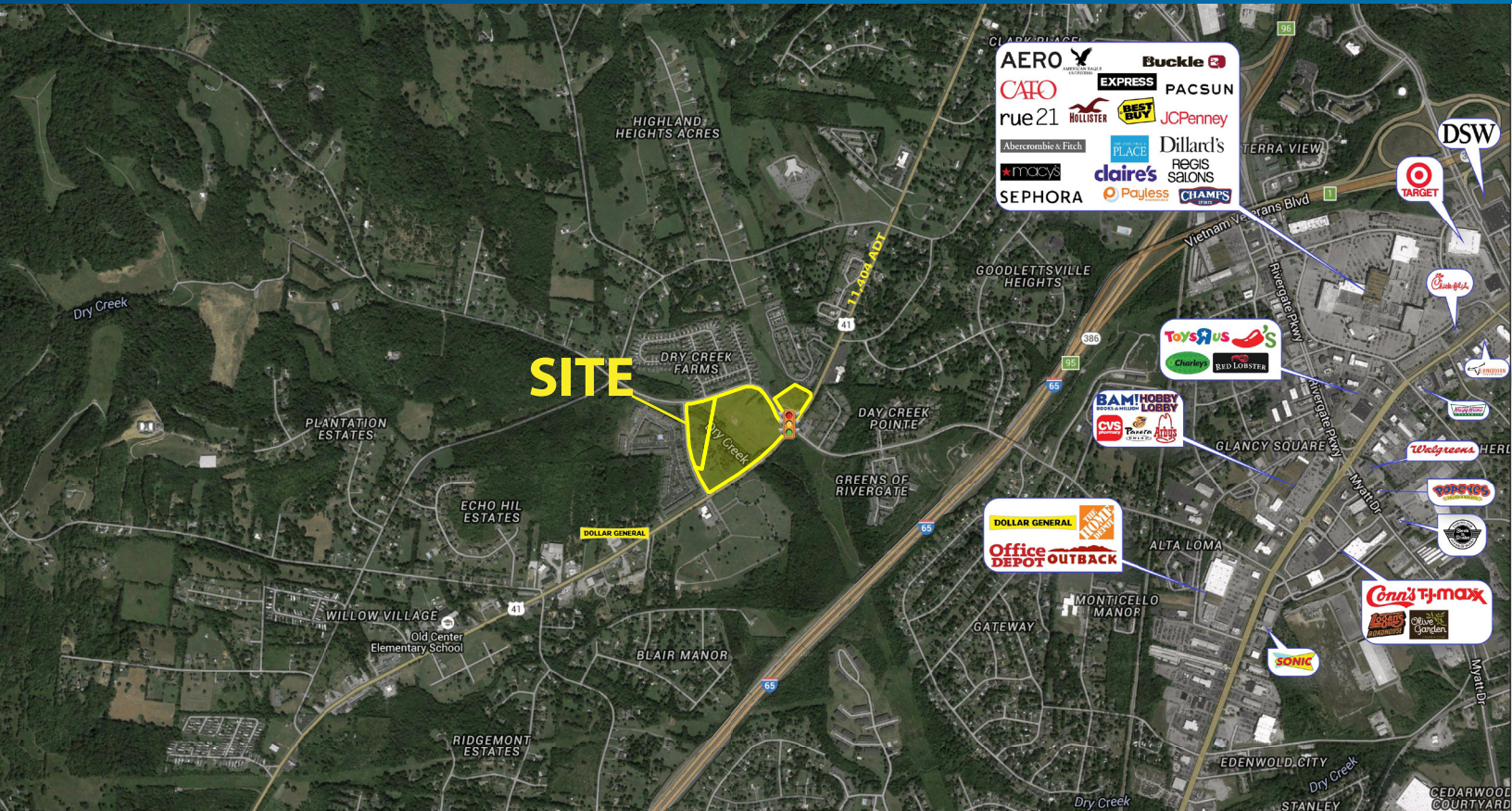


FOR SALE >

# Commercial Land



15 DRY CREEK ROAD, GOODLETTSVILLE, TN 37072



## Site Information

- > 3 Parcels consisting of  $\pm 27.44$  AC
- > Over 1,700 SF frontage on Dickerson Road
- > Located at a signalized corner with 2 Parcels bordered on all sides by roads
- > Detention pond in place

Sale Price: \$2,100,000

## Demographics (2017)

	1 MILE	3 MILE	5 MILE
Population	5,626	35,185	87,358
Households	2,367	15,196	37,024
Average HH Income	\$61,338	\$56,583	\$58,001
Traffic	11,404 VPD (2015)		

The information contained herein has been given to us by the owner of the property or other sources we deem reliable. We have no reason to doubt its accuracy, but we do not guarantee it. All information should be verified prior to purchase or lease.

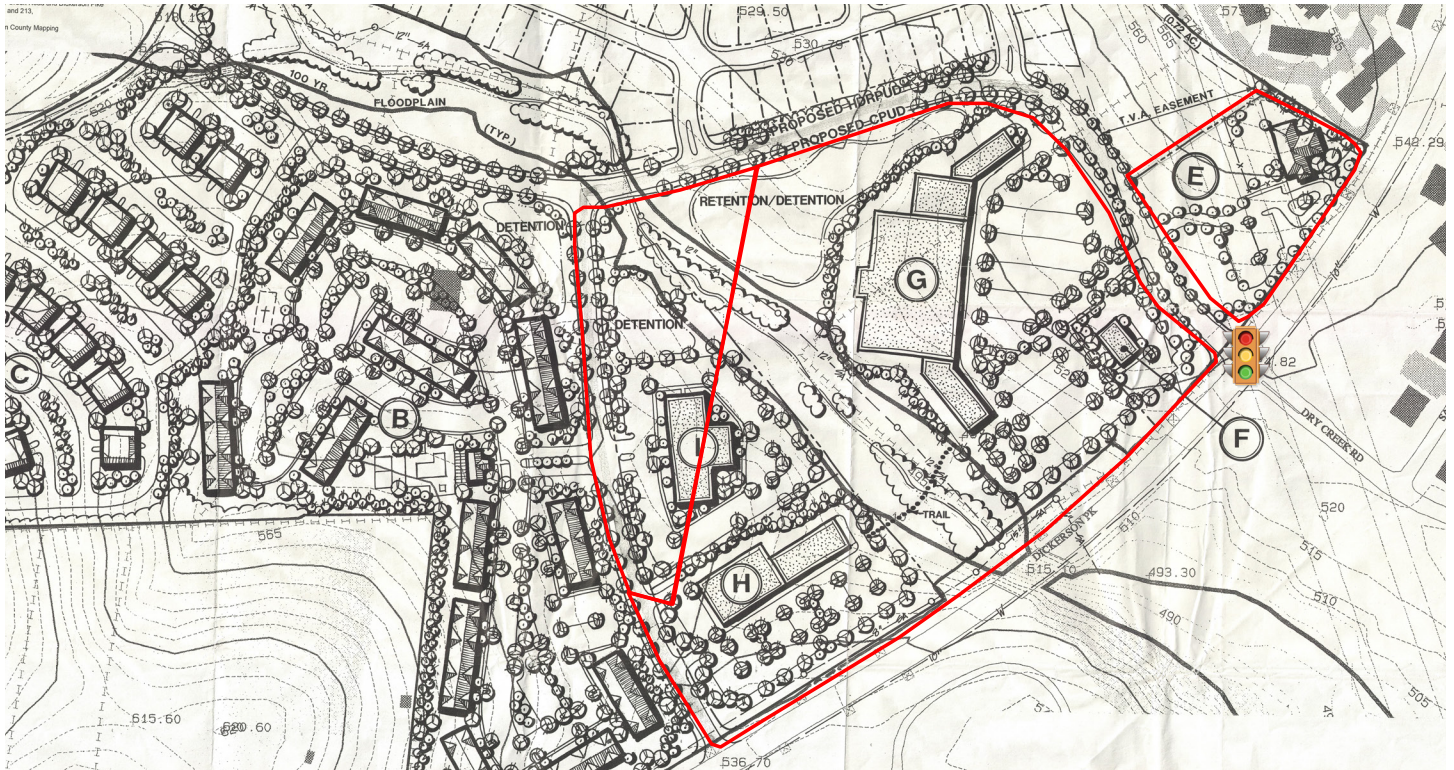
AGENT: STEPHANIE CRAVEN  
DIR: 615 850 2779  
NASHVILLE, TN  
stephanie.craven@colliers.com

COLLIERS INTERNATIONAL  
615 3rd Avenue South, Suite 500  
Nashville, TN 37210  
615 850 2700  
www.colliers.com

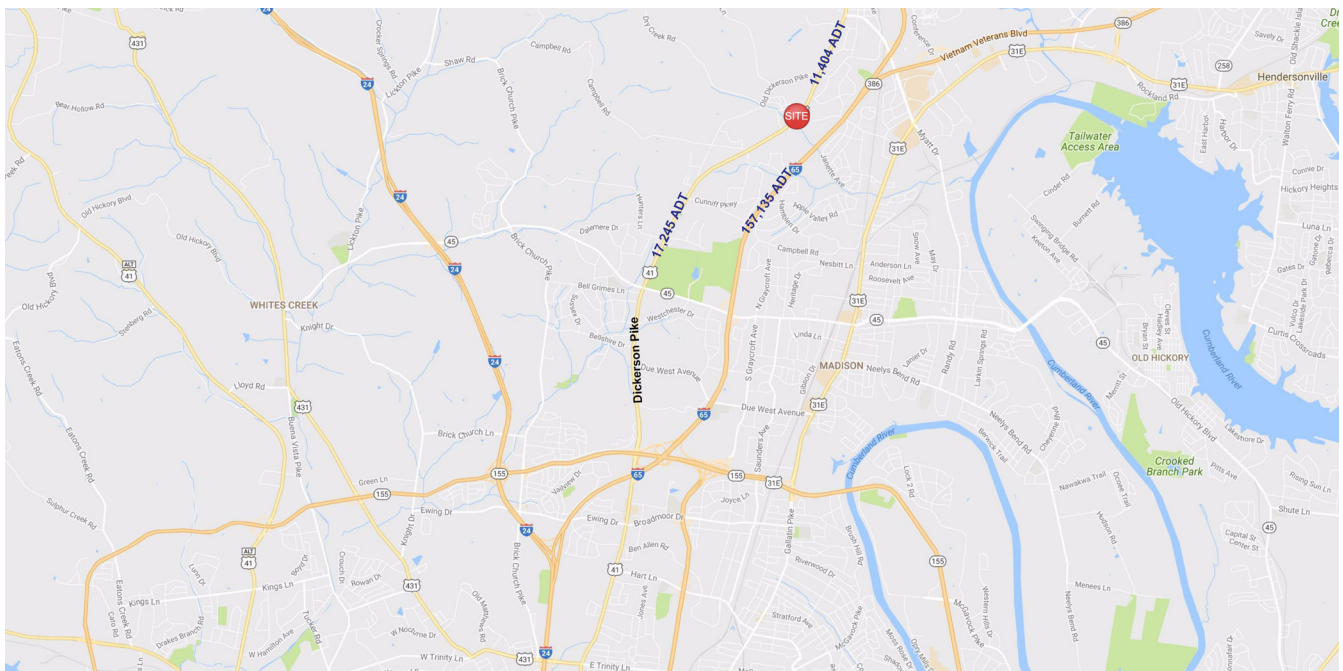


# Preliminary Plan

15 Dry Creek Road, Goodlettsville, TN 37072



## Location Map



AGENT: STEPHANIE CRAVEN  
DIR: 615 850 2779  
NASHVILLE, TN  
stephanie.craven@colliers.com

COLLIERS INTERNATIONAL  
615 3rd Avenue South, Suite 500  
Nashville, TN 37210  
615 850 2700  
www.colliers.com