

# Premier Corporate Office

## 31557 Schoolcraft Rd, Livonia, MI 48150



Listing ID: 30162067  
Status: Active  
Property Type: Office For Lease  
Office Type: Business Park, Executive Suites  
Contiguous Space: 8,835 SF  
Total Available: 8,835 SF  
Lease Rate: \$8.50 PSF (Annual)  
Base Monthly Rent: \$6,258  
Lease Type: NNN  
Ceiling: 12 ft.



### Overview/Comments

Outstanding office/flex space located in the Livonia Executive Center with easy access to I-96 and I-275. 12' ceilings in a clean attractive facility. 7 unique offices with full windows surrounding the perimeter. Spacious open collaboration/flex area. Very nice kitchenette/cafeteria. Sizeable storage room that can be converted to a conference room. Plenty of storage in suite. Access to large training/auditorium room that can be shared with neighboring tenant. Dedicated server room, 250 AMP power. Alarm and security key fob access at entry points. 25 Parking spaces to be marked and designated for the tenant.

### More Information Online

<http://www.cpix.net/listing/30162067>

### QR Code

Scan this image with your mobile device:



### General Information

Tax ID/APN:	105 02 002 001	Gross Building Area:	32,355 SF
Office Type:	Business Park, Executive Suites	Building/Unit Size (RSF):	8,835 SF
Building Name:	Livonia Executive Park	Usable Size (USF):	8,835 SF
Class of Space:	Class C	Land Area:	2.50 Acres

### Available Space

Suite/Unit Number:	400	Lease Term (Months):	60 Months
Suite Floor/Level:	1st	Lease Rate:	\$8.50 PSF (Annual)
Space Available:	8,835 SF	Lease Type:	NNN
Minimum Divisible:	8,835 SF	Offices:	7
Maximum Contiguous:	8,835 SF	Kitchen/Breakroom:	Yes
Space Type:	Relet	Parking Spaces:	25
Date Available:	01/01/2018		

### Area & Location

Property Located Between:	Interstate 96 and Industrial Road	Airports:	Detroit International Airport - 22 minutes, Ann Arbor Municipal Airport - 30 minutes
Property Visibility:	Excellent	Site Description:	Beautifully landscaped and well-maintained business park.
Highway Access:	Interstate 96 - 1 minute, Interstate 275 - 5 minutes		

### Building Related

Total Number of Buildings:	1	Parking Type:	Surface
Number of Stories:	1	Parking Description:	25 Parking Spaces are designated with Suite 400.
Year Built:	1996	Total Parking Spaces:	25
Roof Type:	Flat	Ceiling Height:	12

### Land Related

Legal Description PT OF LOT 2 LIVONIA EXECUTIVE PARK NO 1 PT OF NE 1/4 SEC 27 T1S R9E L102 P68-70 WCR DESC AS BEG AT NW COR S 88D 40M 46S E 111.46 FT TH N 88D 19M 43S E 285.53 FT TO NE COR SAID LOT 2 TH S 02D 33M 19S E 231.56 FT ALONG E LINE LOT 2 TH S 88D 12M 01S W 49.98 FT TH S 01D 47M 59S E 58.32 FT TH S 88D 12M 01S W 348.53 FT TO PT ON W LINE LOT 2 TH N 02D 03M 53S W 296.57 FT ALONG W LINE TO POB 2.593 AC SUBJECT TO EASEMENTS OF RECORD

## Location

Address: 31557 Schoolcraft Rd, Livonia, MI 48150  
County: Wayne

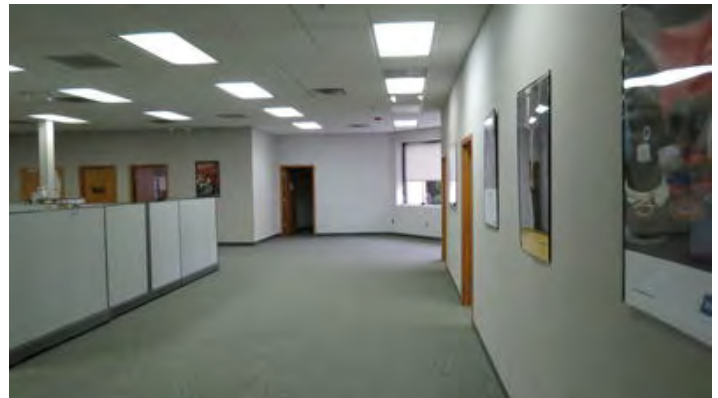
MSA: Detroit-Warren-Dearborn  
Submarket: Southern I-275 Corridor



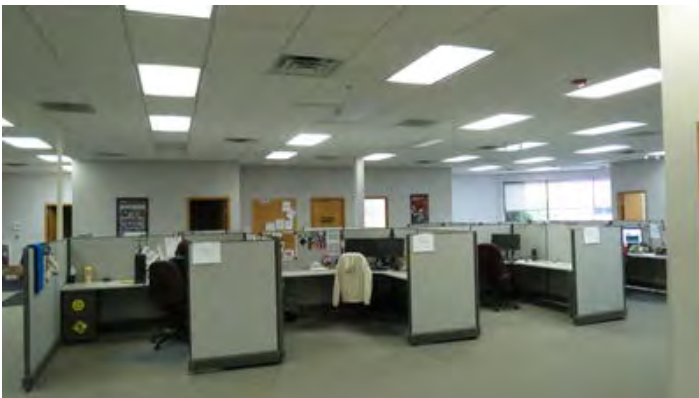
## Property Images



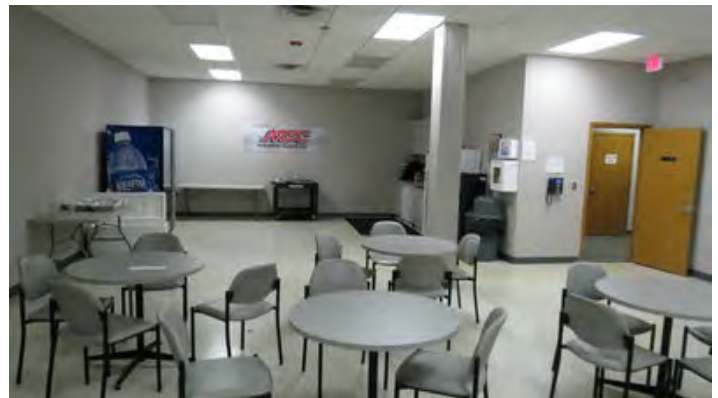
Interior Entrance



Interior Offices



Open Collaboration Area



Kitchen Cafeteria



Shared Classroom View 1



Storage Area



Shared Classroom View 2



Park Sign

## Property Contacts



### James H. Chaconas

Colliers International  
734-769-5005 [O]  
jim.chaconas@colliers.com

**31557 Schoolcraft Rd**  
**Livonia, MI 48150**  
**Suite 400**  
**8,835 Sq.Ft.**

