



W A I A L E

BUSINESS PARK



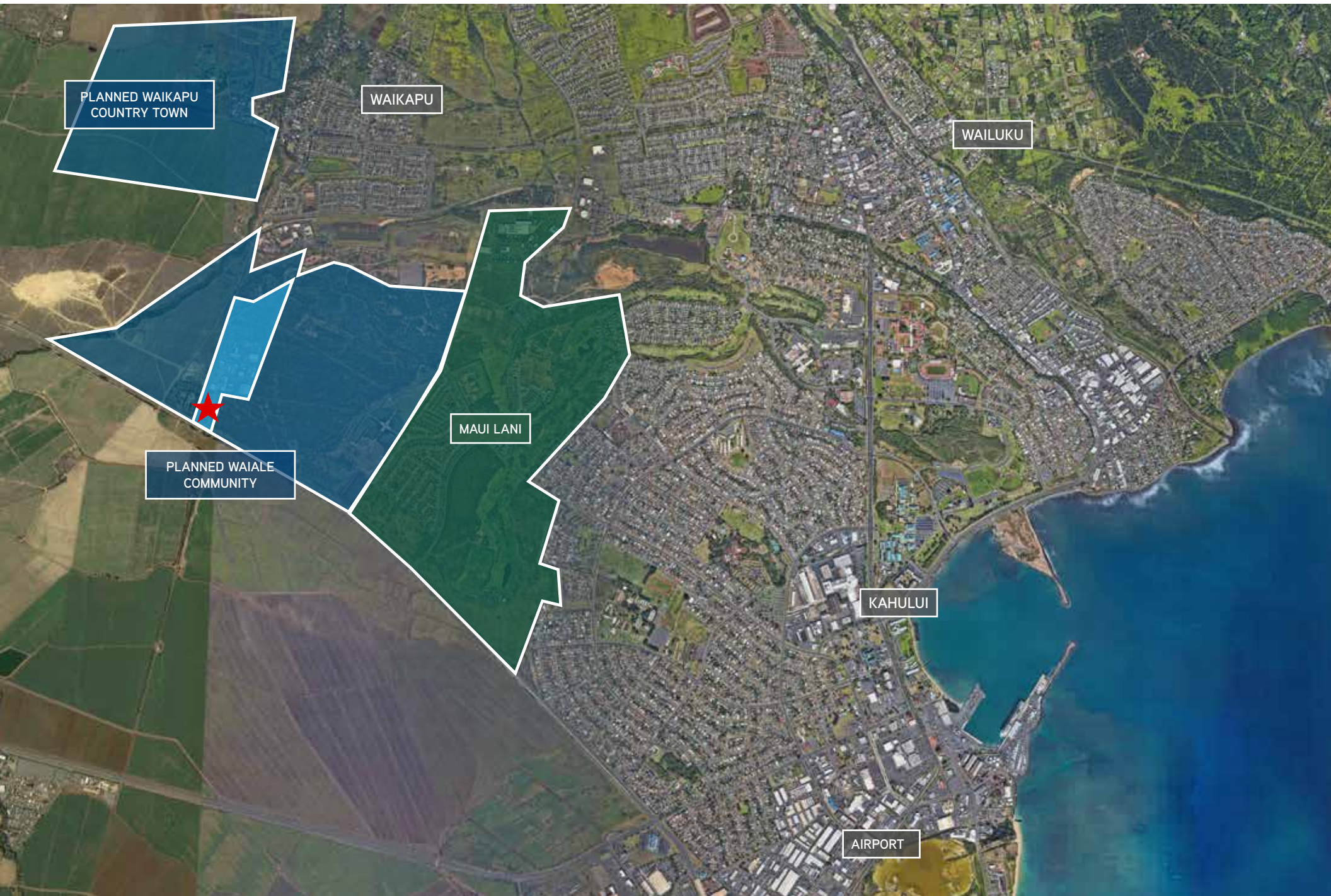


WAIALE BUSINESS PARK

Waiale Business Park presents a unique opportunity to own a fee simple high exposure commercial lot in Central Maui. With commercial zoning providing a wide range of uses, this lot is located at the busy intersection of East Waiko Road and Kuihelani Highway and is adjacent to Consolidated Baseyard and the future Waiale Business Park. The parcel is located within minutes of Kahului Harbor, Airport, Maui Memorial Hospital and is surrounded by more than 80 thousand residents within a 10 mile radius. The strategic location provides easy access to Kahului, Kihei, and Lahaina.

Area:	Waikapu
TMK No:	380071020000
Zoning:	M1 Conditional Zoning allowing B1, B2, and B3 commercial uses
Size Available:	Parcel 21 (7.77 acres)
Sale Price:	\$8,500,000 (\$25.12/sf)
Tenure:	Fee Simple
Features & Benefits:	<ul style="list-style-type: none">• Zoning provides for a variety of uses• Private water system• Water, sewer, electric provided to property• Convenient access from Kuihelani Highway• Highly visible from Highway• In the center of the Waiale and Waikapu Masterplanned Communities (projected 250 residential units)

REGIONAL MAP





WILLIAM FROELICH (B), JD, SIOR, CCIM
Industrial Services Division
808 523 9711
william.froelich@colliers.com

CHARLES J. BUCKINGHAM (S)
Retail Services Division
808 870 1178
charles.buckingham@colliers.com

COLLIERS INTERNATIONAL
220 South King Street, Suite 1800
Honolulu, Hawaii 96813
808 524 2666
www.colliers.com/hawaii

