



For Lease | Flex Space

Lease Rate:

\$1.30/SF
(NNN)

Contact:

Gordon Jacobson
Executive Vice President
+1 801 597 5500
gordon.jacobson@colliers.com

Colliers

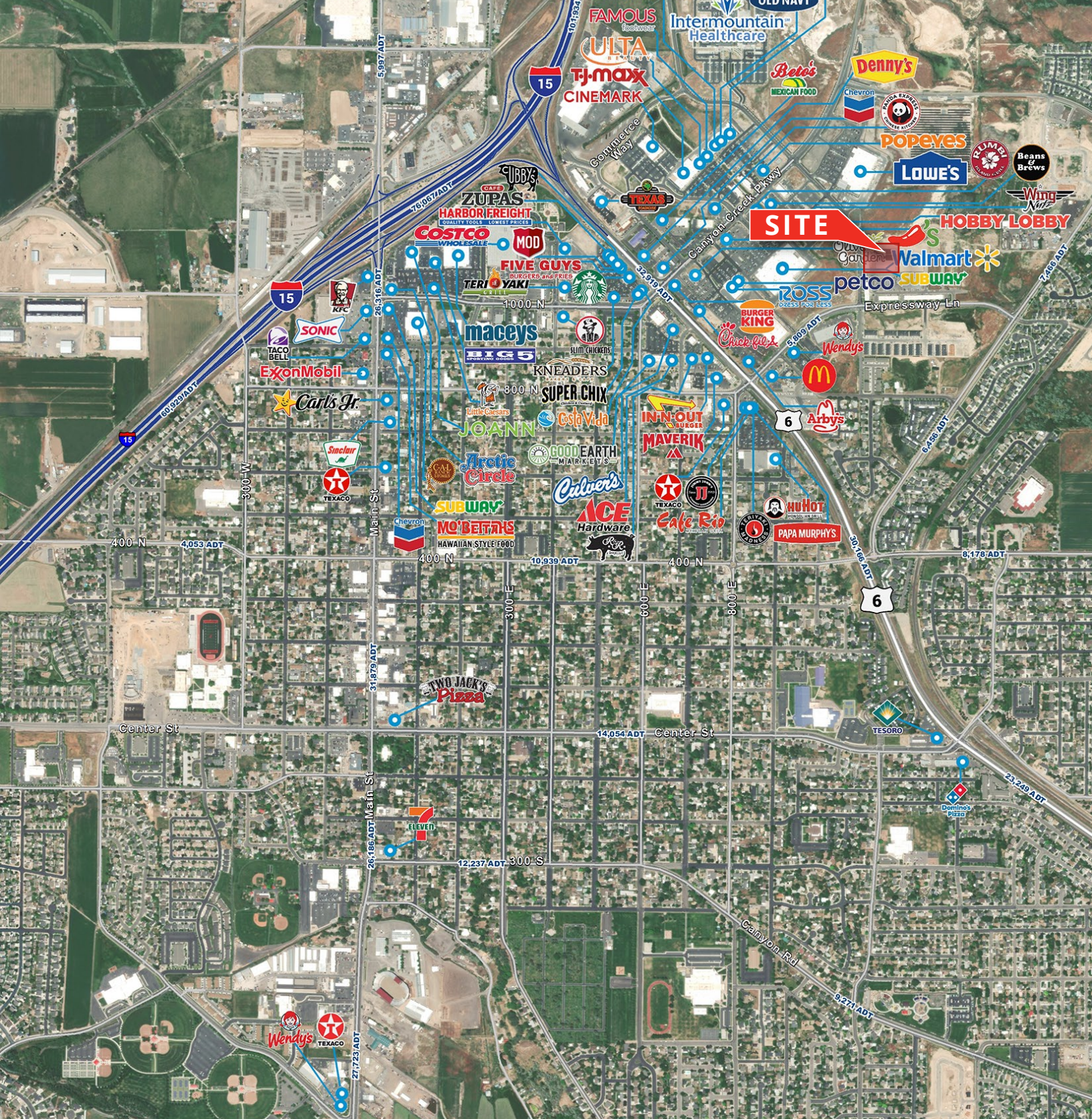
2100 Pleasant Grove Blvd., Suite 200
Pleasant Grove, UT 84062
Main: +1 801 947 8300
colliers.com

Expressway Park

1149 East 1060 North
Spanish Fork, Utah 84660

Property Highlights

- Ready for immediate occupancy
- Last unit: 2,310 SF
- Energy efficient Building
- Clear span construction
- Great visibility
- Conveniently located in the fastest growing area of Utah County
- Adjacent to new IHC Medical Center, Lowes, Walmart, Target, and booming retail centers
- Unmatched parking availability



Colliers
 2100 Pleasant Grove Blvd., Suite 200
 Pleasant Grove, UT 84062
 Main: +1 801 947 8300
 colliers.com

Contact:

Gordon Jacobson
 Executive Vice President
 +1 801 597 5500
 gordon.jacobson@colliers.com

This document has been prepared by Colliers International for advertising and general information only. Colliers International makes no guarantees, representations or warranties of any kind, expressed or implied, regarding the information including, but not limited to, warranties of content, accuracy and reliability. Any interested party should undertake their own inquiries as to the accuracy of the information. Colliers International excludes unequivocally all inferred or implied terms, conditions and warranties arising out of this document and excludes all liability for loss and damages arising therefrom. This publication is the copyrighted property of Colliers International and/or its licensor(s). ©2026. All rights reserved.