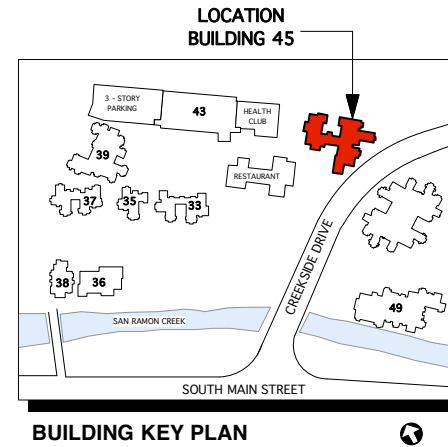
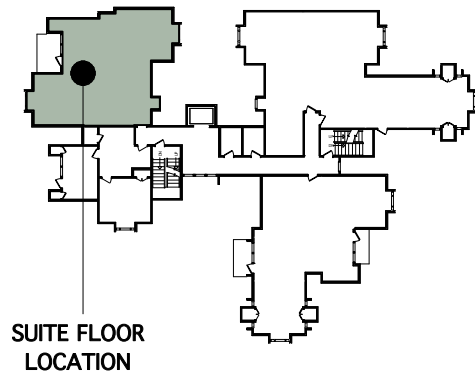
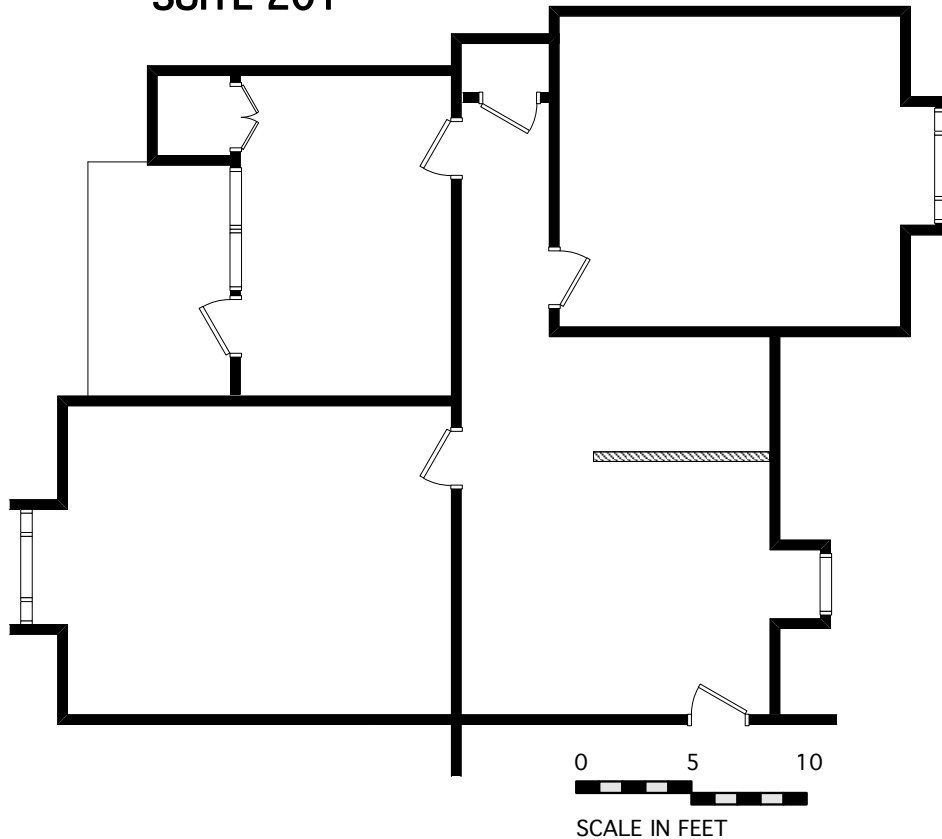


BUILDING 45 - 2ND FLOOR KEY PLAN



SUITE 201



Colliers International
1850 Mount Diablo Boulevard, Suite 200
Walnut Creek, CA 94596 | United States
www.colliers.com

LEASING AGENT

ERIC ERICKSON
(925) 279-5580

PETER GUTZWILLER
(925) 279-4604

QUAIL COURT OFFICE PARK

WALNUT CREEK, CA

Owned and Managed by:

WESTLAKE
DEVELOPMENT
COMPANY, INC.

APPROXIMATE AREA CALCULATIONS
SUBJECT TO VERIFICATION:

1,010 RSF

AS-BUILT PLAN
TO BE VERIFIED

THIS INFORMATION DISPLAYED WHILE NOT GUARANTEED HAS
BEEN SECURED BY SOURCES WE BELIEVE TO BE RELIABLE.
THIS INFORMATION IS SUBJECT TO ERRORS & OMISSIONS.
ANY TENANT SHOULD CONDUCT THEIR OWN INVESTIGATION.

PLAN - A 1-1-18