

OK  
12/11/09

# REGISTERED LAND SURVEY NUMBER 87

LOCATED IN LOT 1, BLOCK 2, HOME DEPOT DULUTH ADDITION, ST. LOUIS COUNTY, MINNESOTA

I hereby certify that, in accordance with the provisions of Chapter 508.47, Minnesota Statutes, I have surveyed the following described property situated in the County of St. Louis and State of Minnesota to wit:

Lot 1, Block 2, HOME DEPOT DULUTH ADDITION, St. Louis County, Minnesota

Except Minerals

*Craig P. Tulp*  
Craig P. Tulp, Land Surveyor  
Minnesota License No. 25299

ST. LOUIS COUNTY SURVEYOR

I hereby certify that this REGISTERED LAND SURVEY NUMBER 87 has been checked and approved this 17 day of July, 2009

*Chris A. Larson*  
St. Louis County Surveyor/Deputy  
Minnesota License No. 45846

CITY OF DULUTH PLANNING DEPARTMENT

Approved by the City of Duluth Planning Department this 16 day of July, 2009

*Chris A. Larson*  
Director of Planning

AUDITOR  
COUNTY OF ST. LOUIS  
STATE OF MINNESOTA

I hereby certify that taxes payable in 2009 and prior years have been paid for the land described on this REGISTERED LAND SURVEY NUMBER 87, dated this 2 day of Dec, 2009

*By S. Wicklund*  
St. Louis County Auditor

REGISTRAR OF TITLES  
COUNTY OF ST. LOUIS  
STATE OF MINNESOTA

I hereby certify that this Registered Land Survey was filed by this office as REGISTERED LAND SURVEY NUMBER 87 this 11 day of December, 2009 as Document No. 878573 affecting Certificate of Title No. 362116

Mark Monacelli

By

Registrar of Titles

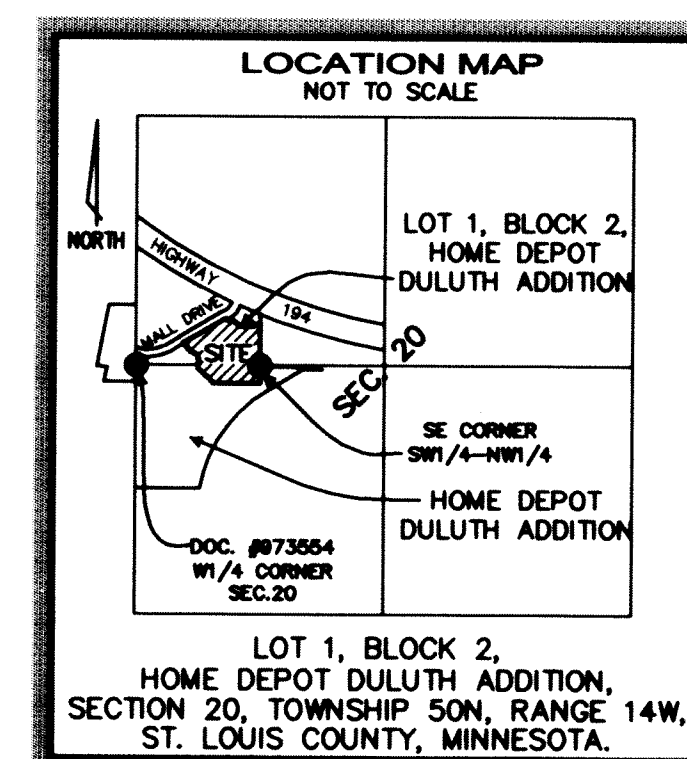
Deputy



0 40 80  
SCALE IN FEET

## LEGEND

- = MONUMENT FOUND
- = 5/8" REBAR MONUMENT FOUND WITH LICENSE NO. 25299
- ⊗ = X IN CONCRETE FOUND
- ⊗ = PAINT MARK ON ROCK
- = 5/8" REBAR SET AND MARKED WITH LICENSE NO. 25299
- ▲ = WETLAND
- = BOUNDARY LINE
- = TRACT LINE
- = SECTION SUBDIVISION LINE
- = UNDERLYING OR ADJACENT LOT LINES
- = WETLAND LINE



## BASIS OF BEARINGS

For the purposes of this survey the South line of Lot 1, Block 2, HOME DEPOT DULUTH ADDITION, St. Louis County, Minnesota is assumed to bear S90°00'00"W.

