

Land For Sale

+19.95 ACRES LAND

COMMERCIAL DRIVE | PRINCETON, NC 27569

FRANK T. QUINN, JR.

President
1 919 582 3150
Frank.Quinn@colliers.com

DAVID BATTEN

Vice President
1 919 582 3117
David.Batten@colliers.com



COLLIERS RDU

702 Oberlin Road, Suite 400
Raleigh, NC 27605
www.colliers.com/rdu

Land For Sale

+19.95 ACRES LAND

COMMERCIAL DRIVE I PRINCETON, NC 27569

Colliers
INTERNATIONAL



PRINCETON, NORTH CAROLINA

Peaceful, Pleasant, Progressive and Proud

Princeton is located in eastern Johnston County, North Carolina halfway between the Town of Smithfield and the City of Goldsboro along US Highway 70. The Town of Princeton was incorporated by North Carolina law in 1861 under the name Boon Hill. The town first got its name from a man named Boon who kept a livery stable in the Holt's Pond area on the stagecoach road from Goldsboro to Raleigh. The town's name was changed to Princeton in 1873 by an act of the North Carolina General Assembly. The new name originated in 1863 from a man by the name of Hensley who moved to the town from Princeton, New Jersey.



[Click here to learn about the history of Princeton, NC](#)

Land For Sale

±19.95 ACRES LAND

COMMERCIAL DRIVE I PRINCETON, NC 27569



PROPERTY DETAILS

- › ±19.95 acres comprised of 12 lots ranging in size from ±1.284 acres to ±4.41 acres
- › Zoning: Light Industrial
- › Highway Commercial District
- › All utilities to the site
- › Water & sewer to the site
- › Located in Johnston County
- › Property can be sold as one parcel or each parcel purchased separately
- › All utilities to the site
- › Sale price: \$25,000/acre per lot

Before the new By Pass 70. To learn more about the expansion click [HERE](#).

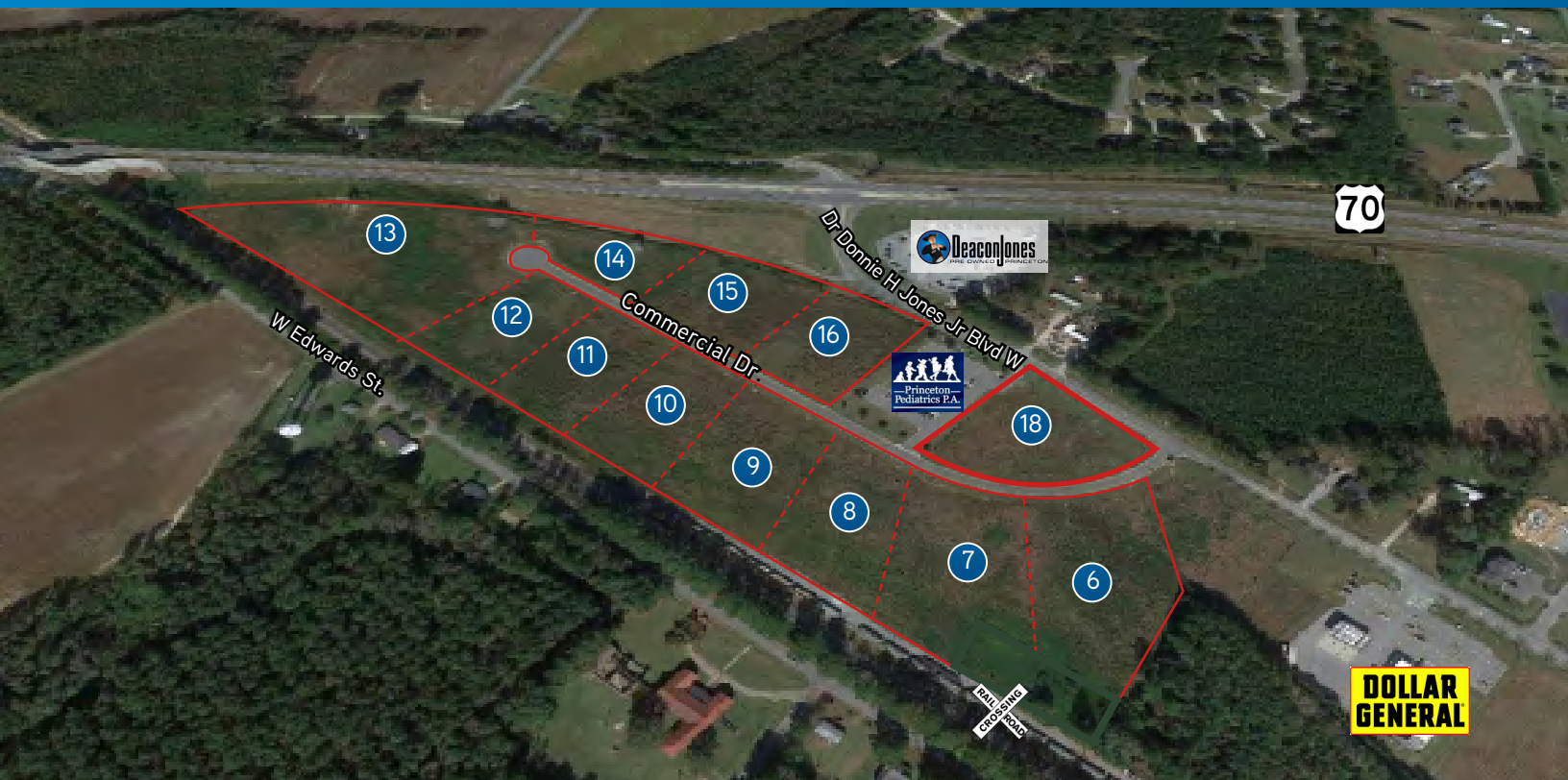
Land For Sale

±19.95 ACRES LAND

COMMERCIAL DRIVE | PRINCETON, NC 27569



PARCEL WITH LOTS



LOTS LEGEND

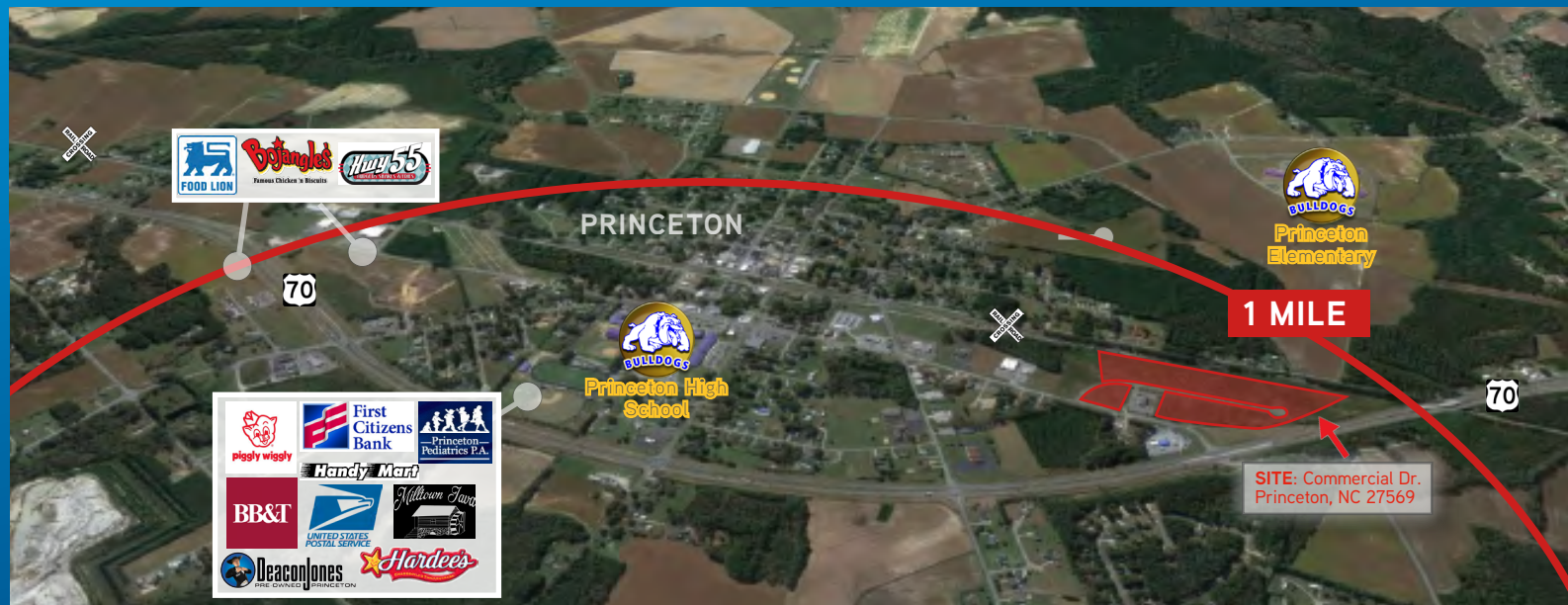
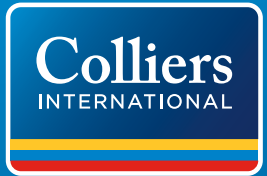
> Lot 6	±1.808 acres	> Lot 12	±1.284 acres
> Lot 7	±1.513 acres (Possible Rail Spur)	> Lot 13	±4.410 acres (Possible Rail Spur)
> Lot 8	±1.454 acres	> Lot 14	±1.377 acres
> Lot 9	±1.286 acres	> Lot 15	±1.440 acres
> Lot 10	±1.286 acres	> Lot 16	±1.327 acres
> Lot 11	±1.286 acres	> Lot 18	±1.070 acres



Land For Sale

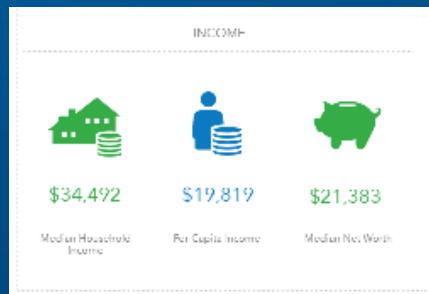
+19.95 INDUSTRIAL LAND

COMMERCIAL DRIVE I PRINCETON, NC 27569

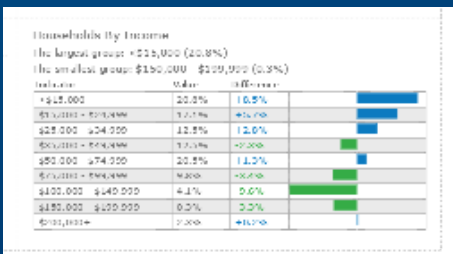


DEMOGRAPHICS - 1 Mile

INCOME



HOUSEHOLDS INCOME

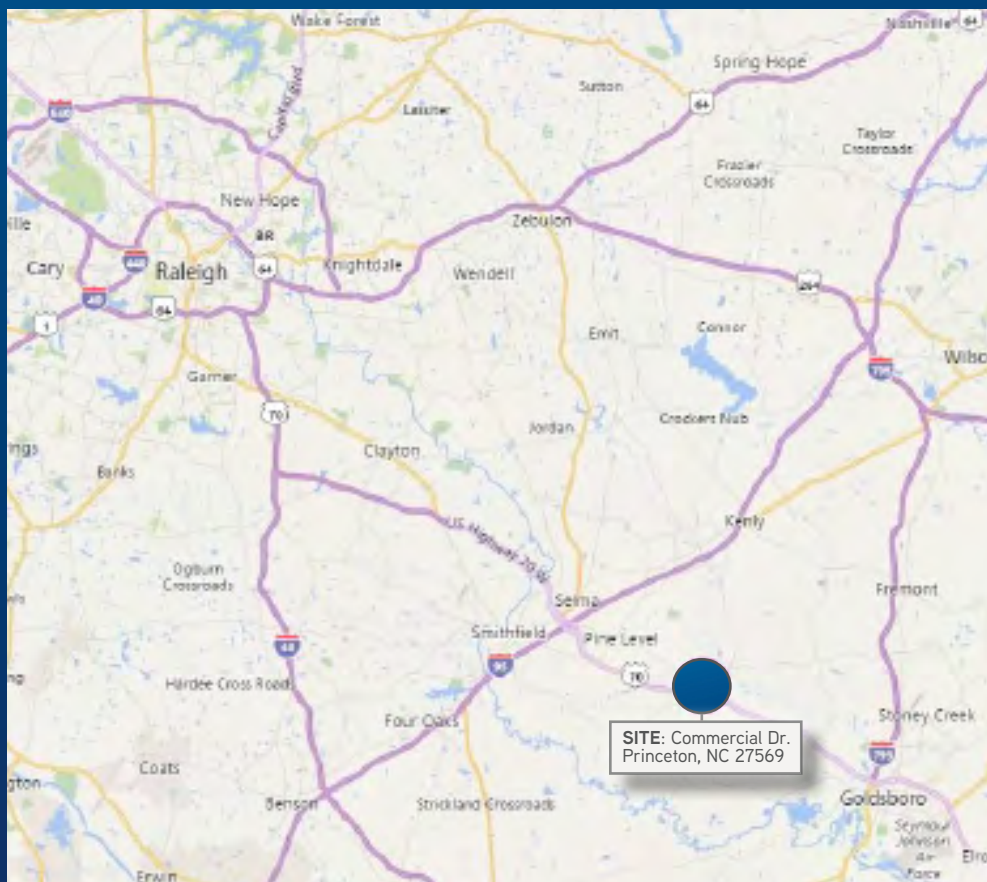


BUSINESS



LOCATION MAP

CLICK ON THE MAP TO BE REDIRECTED TO THE LOCATION IN BING MAPS.



COMMERCIAL DRIVE | PRINCETON, NC 27569



An aerial photograph overlaid with a color-coded land use map. A large parcel in the upper center is outlined in red and labeled "SITE". This parcel is divided into two sections: one colored pink and labeled "Ud" and "I-1", and another colored orange and labeled "C-3". To the left of the "SITE" is a large pink area labeled "NoA" and "R-1". Below the "SITE" is a green area labeled "R-3". To the right of the "SITE" is an orange area labeled "C-3" and "R-3", followed by a light blue area labeled "NoA". Further right is a green area labeled "P" and "R-3". At the top of the map is a road labeled "Gr". Along the bottom edge, there's a road labeled "SH-365" and "COMMERCIAL DRIVE". Other labels include "NnB" at the top left, "Tn" near the bottom center, and "RbA" on the far right. Various smaller numbers and letters are scattered throughout the map, likely representing specific zoning codes or identifiers.

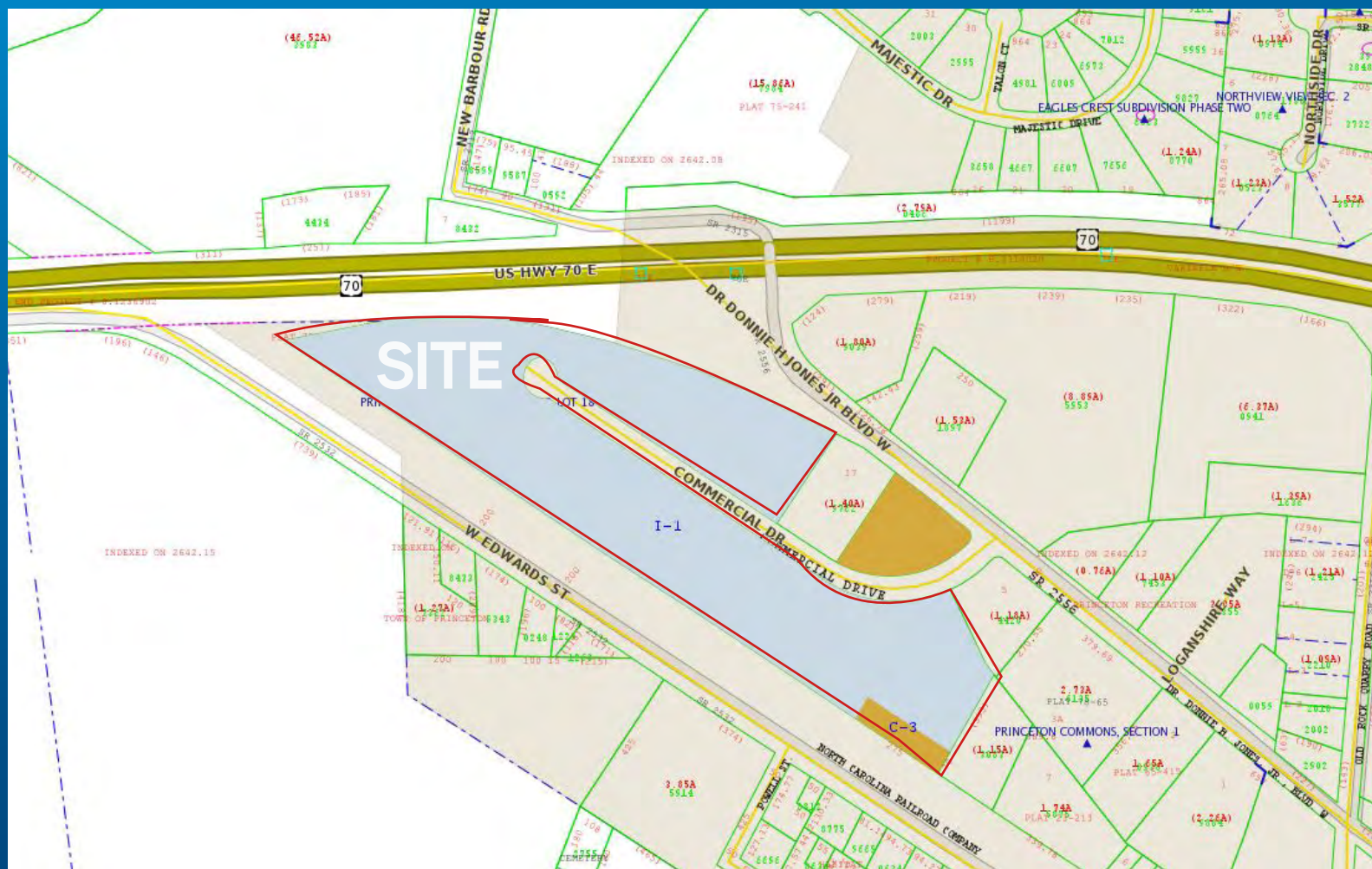
Land For Sale

+19.95 ACRES LAND

COMMERCIAL DRIVE I PRINCETON, NC 27569

Colliers
INTERNATIONAL

ZONING



Prince industrial land is broken into two types of zoning:

-  C-3: Highway Commercial District
-  I-1: Light Industrial

Zoning information obtained from My Princeton NC, you can view the whole report [HERE](#)

Land For Sale

+19.95 ACRES LAND

COMMERCIAL DRIVE | PRINCETON, NC 27569



CONTACT US



FRANCIS T. QUINN, JR.
President
1 919 582 3150
Frank.Quinn@colliers.com



DAVID BATTEN
Vice President
1 919 582 3117
David.Batten@colliers.com

COLLIERS RDU
702 Oberlin Road, Suite 400
Raleigh, NC 27605
www.colliers.com/rdu

DISCLAIMER AND NOTICE TO BUYER

The information herein is provided "ONLY AS AN INTRODUCTION TO THE PROPERTY." All parties interested in purchasing should base their final decision on the results of their own independent inspection of the property. All parties should satisfy themselves as to the condition of the property with respect to the legal, environmental or physical conditions of the property and title thereto. All financial data provided is given for information purposes and is not guaranteed. All parties should perform their own market feasibility study to determine the soundness of the financial data provided and the physical condition of the property. The Owner, Agent and all parties acting on behalf of the Owner or Agent hereby make no representations as to the accuracy or completeness of the information included in this property profile. Unless provided to the buyer under separate cover, no environmental study has been done for this property. This information is believed to be accurate. We are not responsible for misstatements of facts, errors or omissions, prior sale, changes of price or withdrawal from the market without notice.

DISCLAIMER

The information contained in this document has been obtained from sources believed reliable. While Colliers International RDU does not doubt its accuracy, Colliers International RDU has not verified it and makes no guarantee, warranty or representation about it. It is your responsibility to independently confirm its accuracy and completeness. Any projections, opinions, assumptions or estimates used are for example only and do not represent the current or future performance of the property. The value of this transaction to you depends on tax and other factors which should be evaluated by your tax, financial and legal advisors. You and your advisors should conduct a careful, independent investigation of the property to determine to your satisfaction the suitability of the property for your needs. Photos herein are the property of their respective owners and use of these images without the express written consent of the owner is prohibited. Colliers International RDU and the Colliers International logo are service marks of Colliers International and/or its affiliated or related companies in the United States and other countries. All other marks displayed on this document are the property of their respective owners.