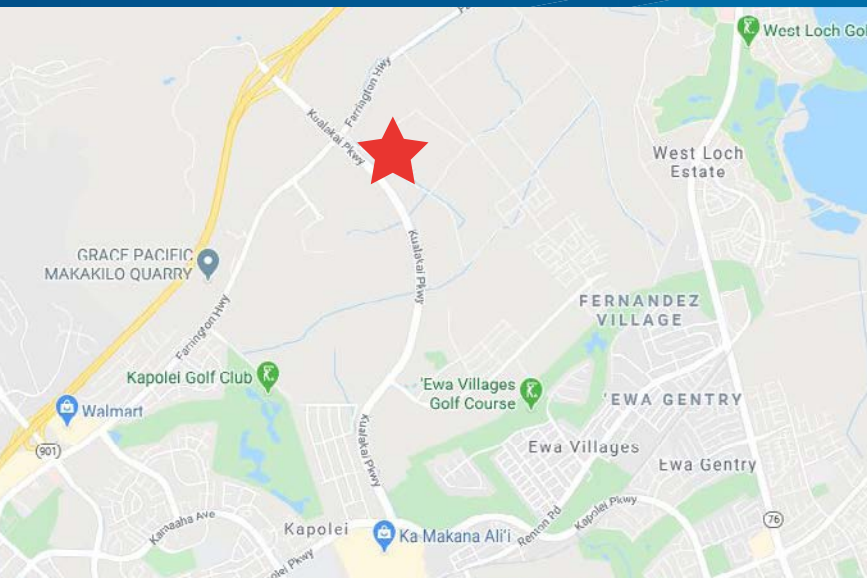


FOR SALE > FEE SIMPLE BMX-3 LAND PARCELS



HO'OPILI - Parcels 13B & 14

EWA BEACH, HAWAII



Ho'opili - Parcel 13B

Asking Price:	\$10,236,000
Price PSF:	\$70/PSF
Tenure:	Fee Simple
Land Area:	3.35 Acres
Zoning:	BMX-3
Height Limit:	90 Feet
TOD (Proposed):	120 Feet

Ho'opili - Parcel 14

Asking Price:	\$12,377,000
Price PSF:	\$63/PSF
Tenure:	Fee Simple
Land Area:	4.5 Acres
Zoning:	BMX-3
Height Limit:	90 Feet
TOD (Proposed):	120 Feet

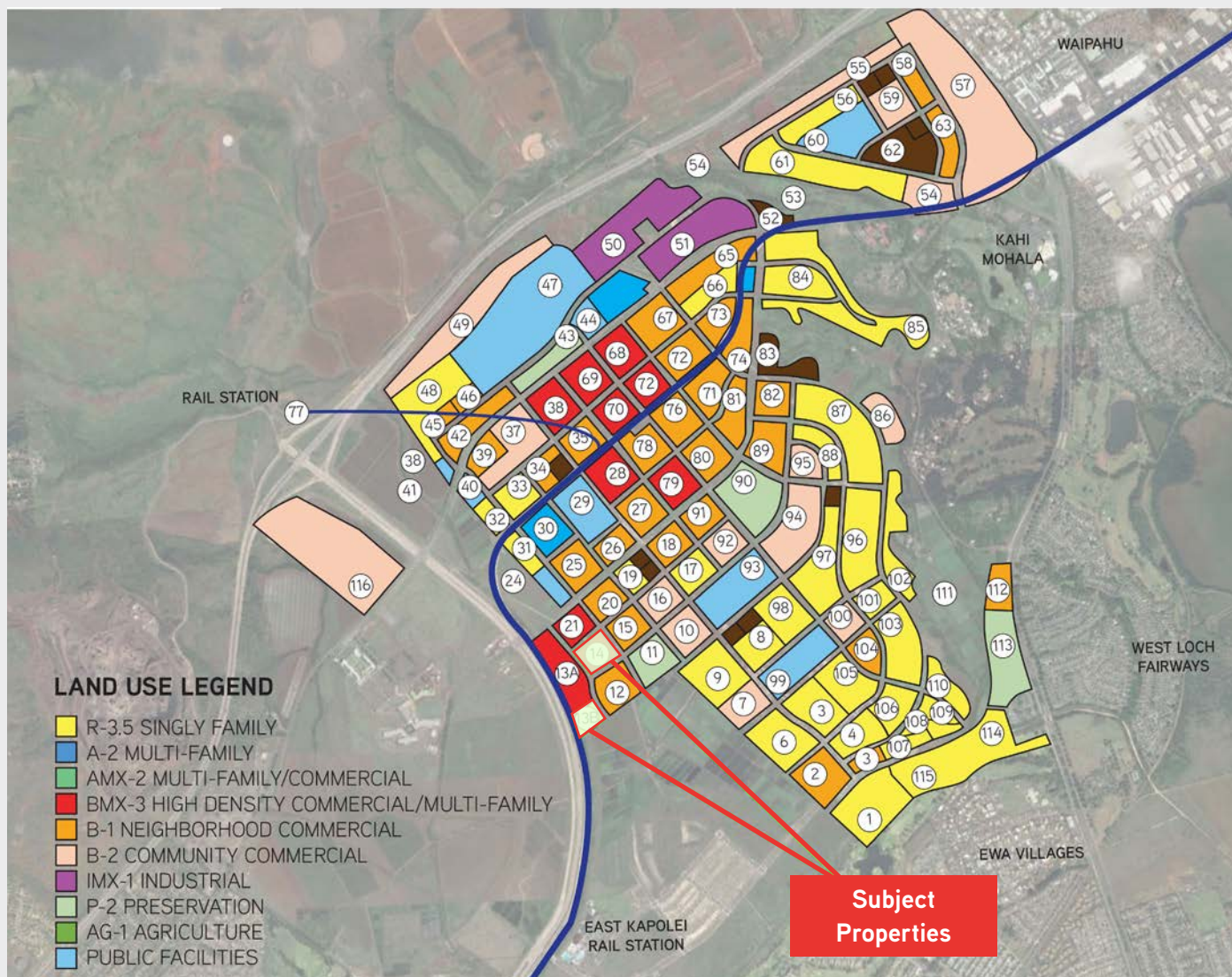
Property Highlights

- > 11,750 homes under construction
- > Located directly across from UH West Oahu
- > Properties front Kualakai Parkway and H-1 Freeway
- > Close proximity to the "up and coming" City of Kapolei

MARK D. BRATTON* (R) CCIM
Investment Services Division
808 523 9708
mark.bratton@colliers.com

SCOTT L. MITCHELL (B) SIOR
Investment & Industrial Services Division
808 523 9702
scott.mitchell@colliers.com

GUY V. KIDDER (B) SIOR
Investment & Industrial Services Division
808 754 3337
guy.kidder@colliers.com



Contact Us

MARK D. BRATTON* (R) CCIM
Investment Services Division
808 523 9708
mark.bratton@colliers.com

SCOTT L. MITCHELL (B) SIOR
Investment & Industrial Services Division
808 523 9702
scott.mitchell@colliers.com

GUY V. KIDDER (B) SIOR
Investment & Industrial Services Division
808 754 3337
guy.kidder@colliers.com

*Bratton Realty Advisers, Ltd. Exclusively contracted to Colliers International HI, LLC. This document has been prepared by Colliers International for advertising and general information only. Colliers International makes no guarantees, representations or warranties of any kind, expressed or implied, regarding the information including, but not limited to, warranties of content, accuracy and reliability. Any interested party should undertake their own inquiries as to the accuracy of the information. Colliers International excludes unequivocally all inferred or implied terms, conditions and warranties arising out of this document and excludes all liability for loss and damages arising there from. This publication is the copyrighted property of Colliers International and/or its licensor(s). ©2020. All rights reserved.

COLLIERS INTERNATIONAL | HAWAII
220 S. King Street, Suite 1800
Honolulu, Hawaii 96813
808 524 2666
www.colliers.com/hawaii

