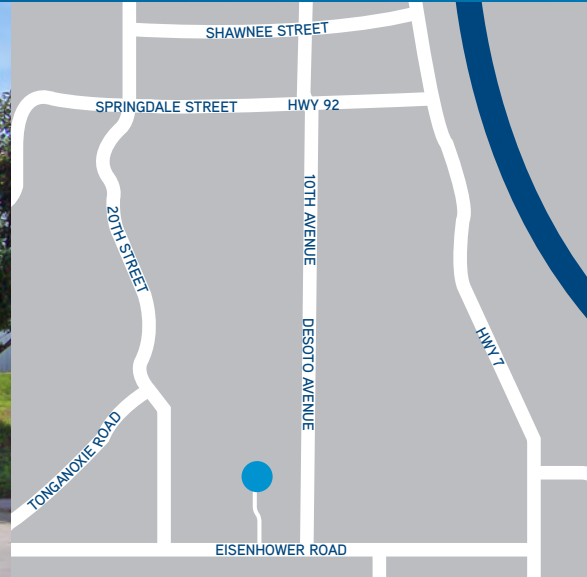


FOR LEASE > INDUSTRIAL SPACE

4751 S 13th Street

LEAVENWORTH, KANSAS



Gary Carlson Business Center

- > Total available: 1,500 SF
 - > Unit 4: 1,500 SF
- > Total building area: 9,000± SF

Building Amenities

- > Office Area: 400± SF office per unit
- > Clear Height: 14' - 16'2"
- > Drive-In loading
- > 3 parking spaces per unit
- > 1.75 miles west of Highway 7
- > Lease rate: \$7.50 PSF

Contact Us

AGENT: DOUG HEDRICK SIOB, CCIM
+1 816 556 1136
KANSAS CITY, MO
doug.hedrick@colliers.com

This document has been prepared by Colliers International for advertising and general information only. Colliers International makes no guarantees, representations or warranties of any kind, expressed or implied, regarding the information including, but not limited to, warranties of content, accuracy and reliability. Any interested party should undertake their own inquiries as to the accuracy of the information. Colliers International excludes unequivocally all inferred or implied terms, conditions and warranties arising out of this document and excludes all liability for loss and damages arising there from. This publication is the copyrighted property of Colliers International and/or its licensor(s). © 2010. All rights reserved.

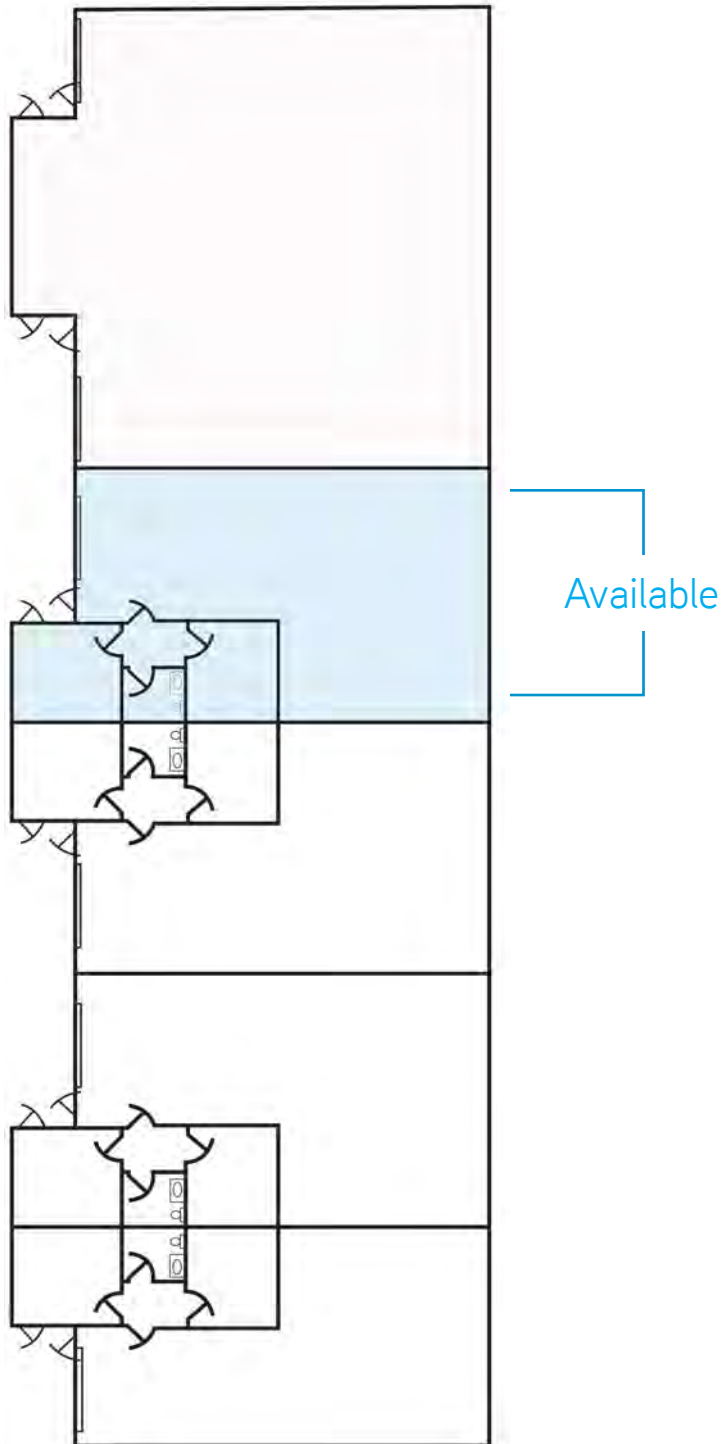
COLLIERS INTERNATIONAL
4520 Main Street, Suite 1000
Kansas City, MO 64111

www.colliers.com

FOR LEASE > INDUSTRIAL SPACE

4751 S 13th Street

LEAVENWORTH, KANSAS



AGENT: DOUG HEDRICK SIOR, CCIM
+1 816 556 1136
KANSAS CITY, MO
doug.hedrick@colliers.com

