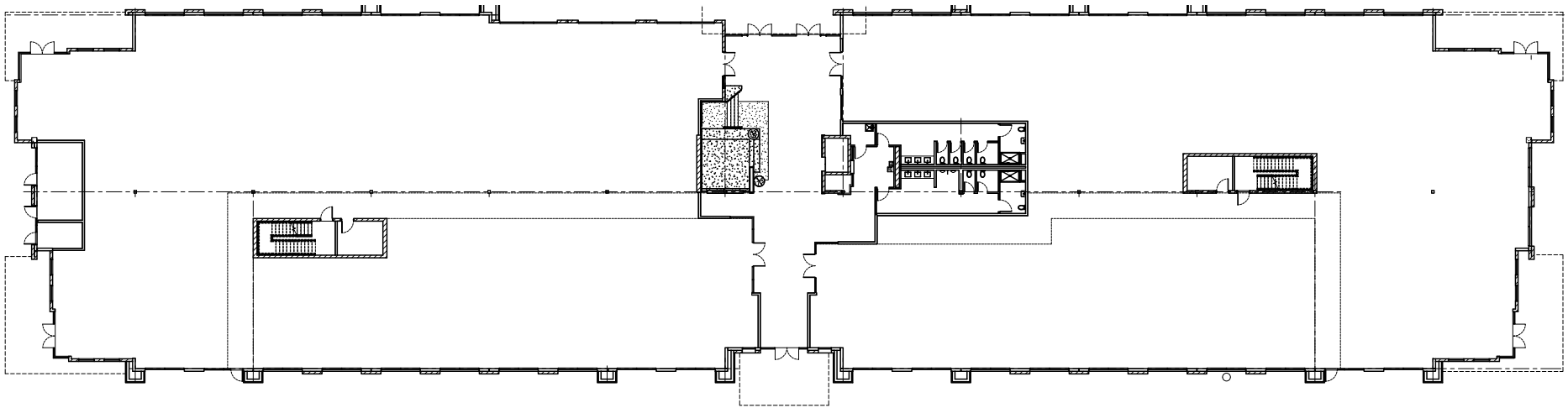




2425 S. STEARMAN DR.  
CHANDLER, ARIZONA



**FIRST FLOOR**

RSF ±33,609 SF



FOR LEASING INFO.  
PLEASE CONTACT

**Todd Noel, CCIM**  
EXECUTIVE VICE PRESIDENT  
DIR +1 602 222 5190  
[todd.noel@colliers.com](mailto:todd.noel@colliers.com)

**Ryan Timpani**  
EXECUTIVE VICE PRESIDENT  
DIR +1 602 222 5193  
[ryan.timpani@colliers.com](mailto:ryan.timpani@colliers.com)

**Kyle Campbell**  
SENIOR ASSOCIATE  
DIR +1 602 222 5062  
[kyle.campbell@colliers.com](mailto:kyle.campbell@colliers.com)

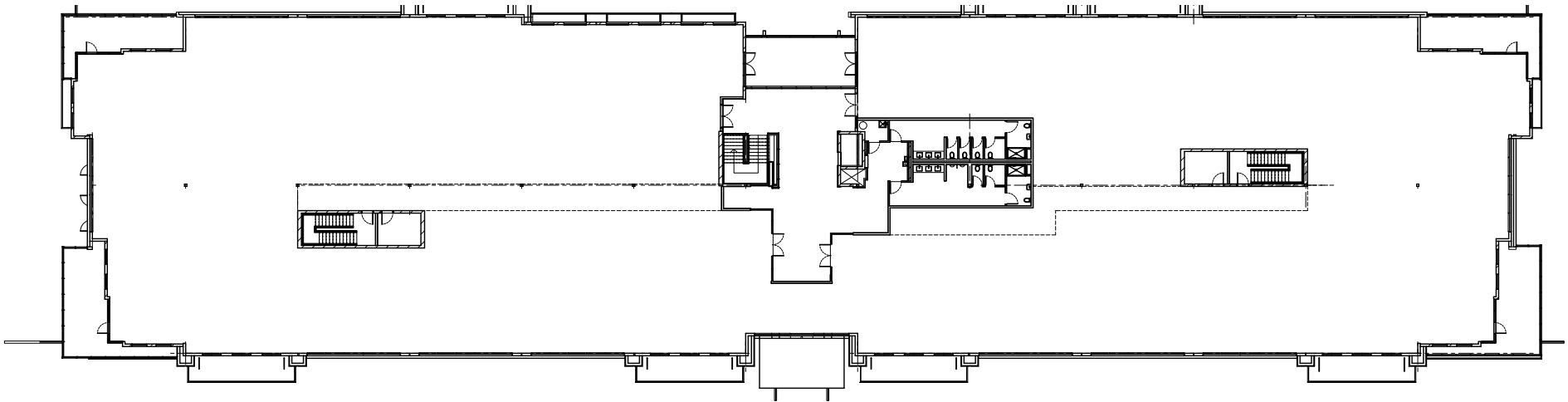
**Colliers International**  
2390 E. Camelback Rd Ste. 100  
Phoenix, AZ 85016  
[www.colliers.com/greaterphoenix](http://www.colliers.com/greaterphoenix)

**Colliers**  
INTERNATIONAL

This document has been prepared by Colliers International for advertising and general information only. Colliers International makes no guarantees, representations or warranties of any kind, expressed or implied, regarding the information including, but not limited to, warranties of content, accuracy and reliability. Any interested party should undertake their own inquiries as to the accuracy of the information. Colliers International excludes unequivocally all inferred or implied terms, conditions and warranties arising out of this document and excludes all liability for loss and damages arising there from. This publication is the copyrighted property of Colliers International and/or its licensors(s). ©2018. All rights reserved.



2425 S. STEARMAN DR.  
CHANDLER, ARIZONA



## SECOND FLOOR

RSF ±33,609 SF



FOR LEASING INFO.  
PLEASE CONTACT

**Todd Noel, CCIM**  
EXECUTIVE VICE PRESIDENT  
DIR +1 602 222 5190  
todd.noel@colliers.com

**Ryan Timpani**  
EXECUTIVE VICE PRESIDENT  
DIR +1 602 222 5193  
ryan.timpani@colliers.com

**Kyle Campbell**  
SENIOR ASSOCIATE  
DIR +1 602 222 5062  
kyle.campbell@colliers.com

**Colliers International**  
2390 E. Camelback Rd Ste. 100  
Phoenix, AZ 85016  
www.colliers.com/greaterphoenix

**Colliers**  
INTERNATIONAL