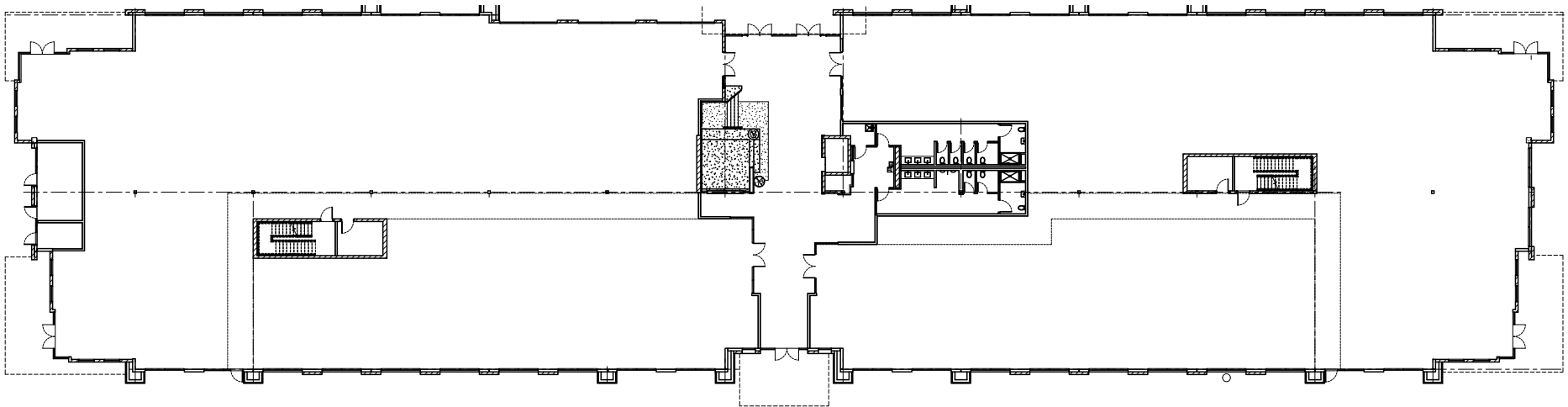




2425 S. STEARMAN DR.
CHANDLER, ARIZONA



FIRST FLOOR

RSF ±33,609 SF



FOR LEASING INFO.
PLEASE CONTACT

Todd Noel, CCIM
EXECUTIVE VICE PRESIDENT
DIR +1 602 222 5190
todd.noel@colliers.com

Ryan Timpani
EXECUTIVE VICE PRESIDENT
DIR +1 602 222 5193
ryan.timpani@colliers.com

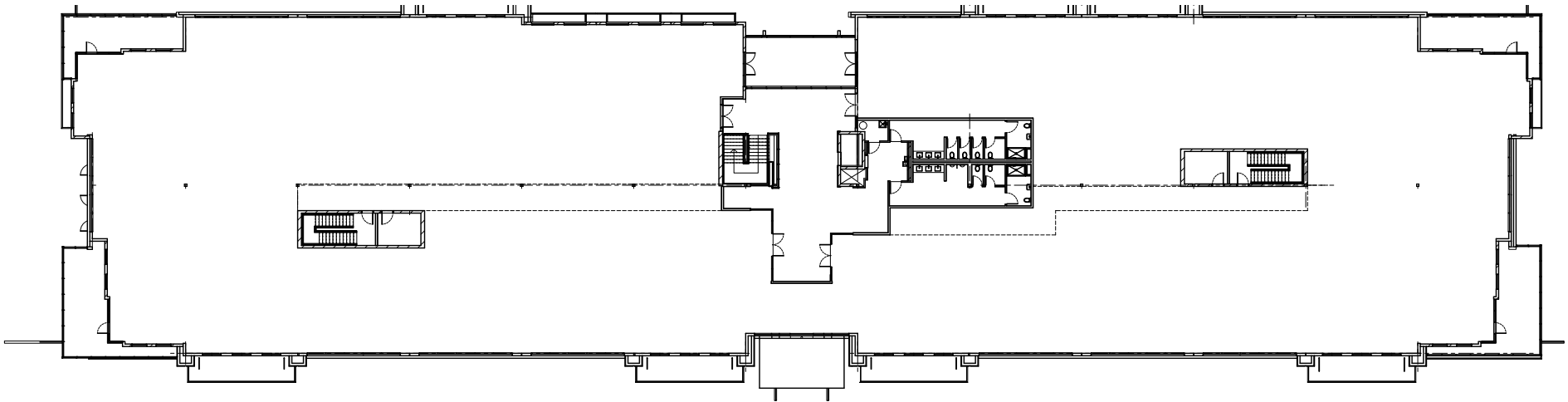
Kyle Campbell
SENIOR ASSOCIATE
DIR +1 602 222 5062
kyle.campbell@colliers.com

Colliers International
2390 E. Camelback Rd Ste. 100
Phoenix, AZ 85016
www.colliers.com/greaterphoenix

Colliers
INTERNATIONAL



2425 S. STEARMAN DR.
CHANDLER, ARIZONA



SECOND FLOOR

RSF ±33,609 SF



FOR LEASING INFO.
PLEASE CONTACT

Todd Noel, CCIM
EXECUTIVE VICE PRESIDENT
DIR +1 602 222 5190
todd.noel@colliers.com

Ryan Timpani
EXECUTIVE VICE PRESIDENT
DIR +1 602 222 5193
ryan.timpani@colliers.com

Kyle Campbell
SENIOR ASSOCIATE
DIR +1 602 222 5062
kyle.campbell@colliers.com

Colliers International
2390 E. Camelback Rd Ste. 100
Phoenix, AZ 85016
www.colliers.com/greaterphoenix

Colliers
INTERNATIONAL